

Solano County 2015



Crop and Livestock Report

JIM ALLAN
Agricultural Commissioner /
Sealer of Weights and Measures

SIMONE HARDY
Assistant Agricultural Commissioner /
Sealer of Weights and Measures

www.solanocounty.com

**COUNTY AGRICULTURAL COMMISSIONER /
SEALER OF WEIGHTS AND MEASURES**



OFFICE LOCATION:
2543 Cordelia Road
Fairfield, CA 94534

MAILING ADDRESS:
675 Texas Street
Fairfield, CA 94533

Phone (707) 784-1310
Fax (707) 784-1330

To: Karen Ross, Secretary
California Department of Food and Agriculture

and

The Honorable Board of Supervisors
County of Solano, California

Pursuant to the provisions of Sections 2279 and 2272 of the California Food and Agricultural Code, I am pleased to present the Solano County Crop and Livestock Report for 2015.

This report is the 66th annual report issued by the Agricultural Commissioner. Although overall production values dropped from last year in the face of a fourth year of statewide drought, Solano County growers were successful in maintaining farm gate values that were higher than pre-drought values. It is important to remember that this report lists farm gate values only. Processing capacity allows some growers to add or recapture value, but this report is not a measure of profitability, nor does it account for the re-spending and support multipliers generated by this production in the local economy.

The gross value of Solano County's agricultural production for 2015 was \$353,869,000, representing a decrease from 2014 values by \$24,776,000, or a 6.5% drop. The extended drought contributed to decreased values in animal production, field crops, and seed crops. Tomatoes and Walnuts remained as the top two crops at \$42,156,000 and \$37,912,000 respectively. Nursery Products increased value by \$2,054,000 to take the third rank position at \$37,648,000. Alfalfa dropped to fourth at \$34,821,000, while Cattle and Calves remained at fifth at \$27,556,000. Of the top ten commodities, only Nursery Products and Almonds increased from 2014 values by 6.7% and 66.7% respectively. All of the remaining crops listed in the top ten decreased in values ranging from 8.6% for Tomatoes to as much as 52.2% for Sunflower (Seed).

This year's cover story celebrates the Sheep, Lamb and Wool industry in Solano County. Sheep farming has been an integral part of Solano County's agricultural economy and historical heritage for over 160 years. Solano County is one of the top sheep and lamb producing counties in California.

I would like to express my sincere appreciation to all of the farmers, ranchers, boards, commissions, and agencies who contributed vital data without which this report would not be possible, as well as my staff for their dedication to compiling and producing the 2015 Solano County Crop and Livestock Report. I would like to also recognize and extend my gratitude to our crop report editors and co-leads, Allison Klein and Daydre Roser, for their efforts in compiling and producing this report.

To see this or any of the previous crop reports online or to learn more about the services provided and programs of the Solano County Department of Agriculture and Weights and Measures, please visit our website at www.solanocounty.com/ag.

Respectfully submitted,

Jim Allan
Agricultural Commissioner/Sealer of Weights and Measures

Solano County's Sheep, Lamb, and Wool Industry

Solano County began attracting pioneers in the 1840s. By 1850 sheep, cattle, and wheat had become the leading products in the county. Fast forward more than 160 years and sheep farming remains a vital part of Solano County's agricultural identity and heritage. For the past 15 years, Solano County has been one of the leading sheep and lamb producing counties in California, averaging approximately 10% of the State's total gross value of sheep and lamb production¹. Many of the families who settled and began farming sheep in Solano County in the 1800's are still in the sheep business today, some four or five generations later raising sheep in Dixon and the Montezuma Hills area outside Rio Vista.

Sheep are multi-purpose animals, raised for their meat, milk, wool, and hides. They are also used in science and medicine as a popular research model. For centuries, sheep have been used in landscape management to control unwanted vegetation. More recently, grazing as a fee-based service has become a new opportunity for sheep producers. Superior Farms, North America's largest processor and marketer of lambs, operates in and remains one of the largest employers in Dixon.



A sheep's wool is the most widely used animal fiber, and was one of the first commodities of sufficient value to warrant international trade. The wool from one sheep is called a fleece, and that fleece can be processed and spun into yarn. Wool can come in a variety of colors depending on the breed of the sheep, however white wool is the most

common as it is a dominant genetic trait in sheep. Some of the sheep raised in Solano County for wool include Navajo Churro, Wensleydale, Shetland, Karakul, Merino, and Jacob sheep. The Jacob sheep is a rare breed, unique in appearance with its spotted wool and multiple horns.

The Lambtown Festival, held annually in the fall in Dixon, celebrates all things lamb and sheep. Now into its 30th year, the festival gives the public a chance to see the many sides of the California lamb and sheep industry, from fiber arts demonstrations and cook-offs, to sheep dog trials and shearing contests.

Today the sheep and lamb industry faces many obstacles. Reduced food sources due to drought and dry pastures, losses to predation, price volatility, and lower lamb consumption have affected the ability of local sheep farmers to succeed over the years. Despite these obstacles local farmers have remained resilient, developing and accessing niche markets for sheep and lamb products. These markets include locally-sourced wool for the local fiber economy, and lamb for Bay Area and Sacramento restaurants. In 2015, lamb and sheep production brought in nearly 6.7 million dollars to the county, making it Solano County's tenth most valuable agricultural industry.



Jacob sheep, Vacaville, CA

¹California County Agricultural Commissioners' Reports, CDFA & USDA NASS Pacific Region, various years

**SOLANO COUNTY
BOARD OF SUPERVISORS**

Erin Hannigan, Chairwoman, District 1
Linda J. Seifert, District 2
James P. Spering, District 3
John M. Vasquez, Vice-Chair, District 4
Skip Thomson, District 5

COUNTY ADMINISTRATIVE OFFICER

Birgitta E. Corsello

DEPARTMENT OF AGRICULTURE STAFF

**Agricultural Commissioner/
Sealer of Weights & Measures**

Jim Allan

**Assistant Agricultural Commissioner/
Sealer of Weights & Measures**

Simone Hardy

**Deputy Agricultural Commissioner/
Sealer of Weights & Measures**

Linda Pinfold
Andrina Quan

Deputy Sealer of Weights & Measures

Doug Echelberger

Senior Agricultural Biologist / Weights & Measures Inspectors

Manny Devera
Steve Paris
Thea Nothaft
Shirley Tavare
Laura Tripp

Agricultural Biologist / Weights & Measures Inspectors

Matthew Carl
Allison Klein
Daydre Roser
Michael Duncan
Roberto Raya
Cesar Ruvalcaba
Cody Zacharia

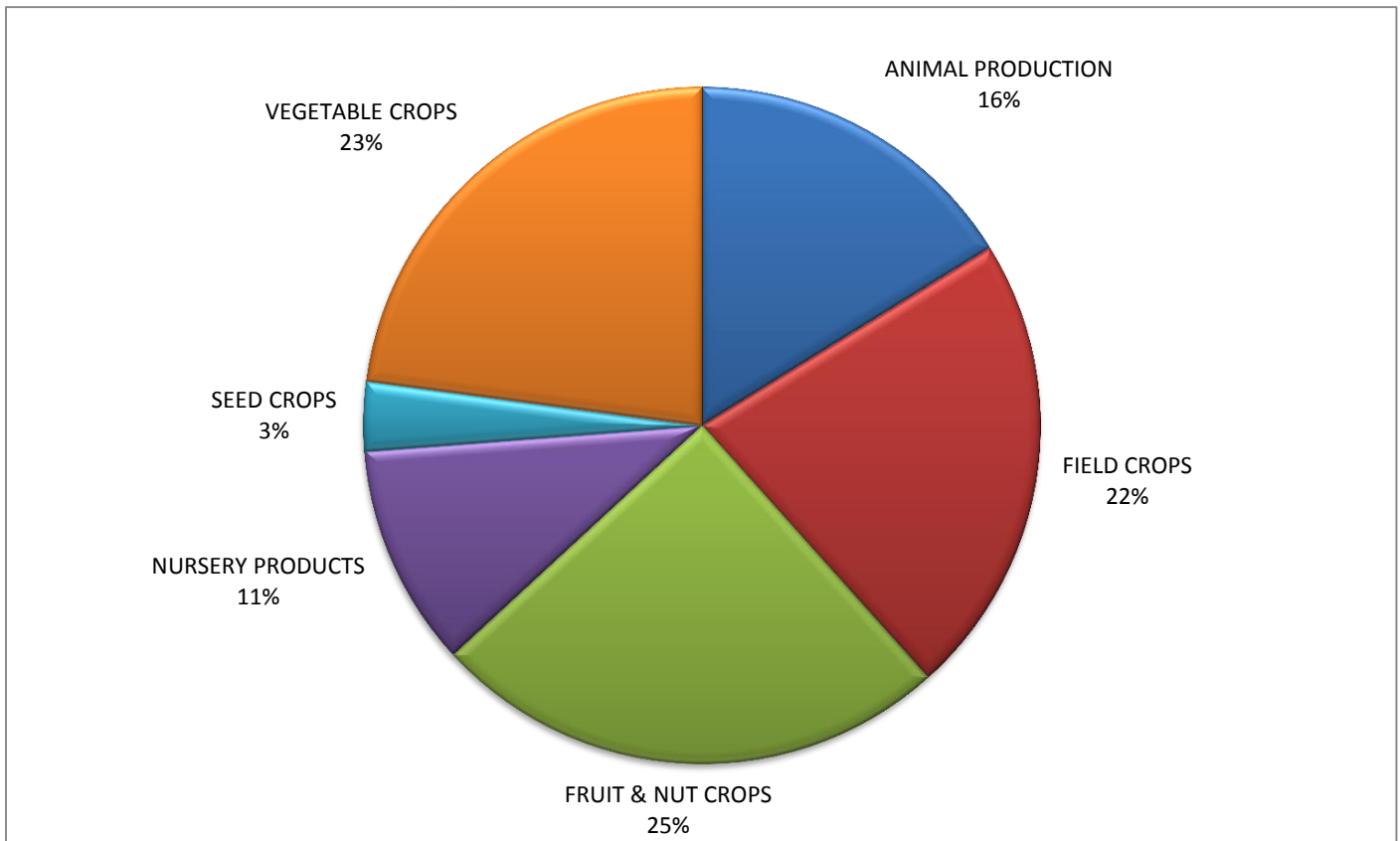
Accountant

Dan Peterson

Office Assistants

Stephanie Austin
Alexis Kasperek
Sharon Garrett
Suki LaForga
Letitia Perkins

2015 Value by Crop Group



Value Summary

YEAR	ANIMAL PRODUCTION ¹	FIELD CROPS	FRUIT & NUT CROPS	NURSERY PRODUCTS	SEED CROPS	VEGETABLE CROPS	TOTAL VALUE
2005	50,902,000	52,813,000	37,919,000	50,018,000	10,533,000	36,505,000	\$238,690,000
2006	47,852,000	46,946,000	39,964,000	47,856,000	9,988,000	40,899,000	\$233,505,000
2007	54,820,000	54,812,000	43,430,000	56,611,000	10,821,000	47,762,000	\$268,256,000
2008	49,873,000	89,365,000	44,037,000	43,056,000	10,828,000	55,624,000	\$292,783,000
2009	40,116,000	50,073,000	48,191,000	33,499,000	15,859,000	64,184,000	\$251,922,000
2010	46,011,000	57,072,000	54,874,000	23,352,000	14,391,000	63,698,000	\$259,398,000
2011	52,458,000	83,812,000	63,420,000	23,630,000	14,671,000	53,668,000	\$291,659,000
2012	63,425,000	84,604,000	87,368,000	32,707,000	17,680,000	56,911,000	\$342,695,000
2013	51,340,000	88,744,000	97,150,000	35,144,000	16,628,000	59,209,000	\$348,215,000
2014	62,387,000	98,672,000	86,624,000	35,594,000	16,900,000	78,468,000	\$378,645,000
2015	57,277,000	78,454,000	87,741,000	37,648,000	11,729,000	81,020,000	\$353,869,000

¹Includes livestock and poultry, livestock and poultry products, and apiary production.



Top Ten Million Dollar Commodities

CROP	2015 CROP VALUE	2015 CROP RANKING	2014 CROP RANKING
Tomatoes (Processing)	42,156,000	1	1
Walnuts	37,912,000	2	2
Nursery Products	37,648,000	3	4
Alfalfa (Hay)	34,821,000	4	3
Cattle & Calves	27,556,000	5	5
Almonds	23,603,000	6	8
Grapes (Wine)	14,988,000	7	6
Wheat	9,092,000	8	9
Sunflower (Seed)	6,904,000	9	7
Sheep & Lambs	6,684,000	10	11



Fruit & Nut Crops

CROP	YEAR	BEARING ACRES	PRODUCTION		UNIT	VALUE			
			PER ACRE	TOTAL		PER UNIT	TOTAL	% CHANGE	
Almonds (Meats)	2015	6,880	0.65	4,470	Ton	5,300.00	23,603,000	67%	
	2014	3,430	0.70	2,410	Ton	5,860.00	14,156,000		
Grapes (Wine)^{1,2}	Dark Varieties	2015	-	-	7,660	Ton	1,010.00	7,737,000	-8%
		2014	-	-	10,000	Ton	833.00	8,365,000	
	White Varieties	2015	-	-	10,270	Ton	706.00	7,251,000	-22%
		2014	-	-	13,000	Ton	714.00	9,256,000	
	Total Grapes	2015	4,440	4.04	17,930	Ton	-	14,988,000	-15%
2014	4,380	5.26	23,010	Ton	-	17,621,000			
Olives³	2015	180	1.37	247	Ton	2,560.00	631,000	128%	
	2014	162	1.31	213	Ton	1,710.00	277,000		
Prunes (Dried)	2015	893	2.56	2,286	Ton	2,470.00	5,647,000	11%	
	2014	877	2.79	2,450	Ton	2,080.00	5,101,000		
Walnuts	2015	10,510	1.50	15,800	Ton	2,400.00	37,912,000	-17%	
	2014	9,400	1.37	13,000	Ton	3,530.00	45,422,000		
Miscellaneous⁴	2015	1,190	-	-	-	-	4,960,000	23%	
	2014	971	-	-	-	-	4,047,000		
TOTAL FRUIT & NUT CROPS	2015	24,093					\$87,741,000	1%	
	2014	19,200					\$86,624,000		

Figures may not add due to rounding.

¹Includes acreage not harvested or sold.

²Total production and value per unit from the California Department of Food and Agriculture Grape Crush Report Final 2015.

³Value per unit based on oil value.

⁴Includes almond hulls, apples, apricots, blackberries, cherries, citrus, figs, grapes (table), kiwi, nectarines, peaches, pears, persimmons, pistachios, plums, pomegranates, and strawberries.



Field Crops

CROP	YEAR	HARVESTED ACRES	PRODUCTION		UNIT	VALUE			
			PER ACRE	TOTAL		PER UNIT	TOTAL	% CHANGE	
Beans, Dry	2015	2,850	1.09	3,110	Ton	1,100.00	3,332,000	10%	
	2014	2,000	1.27	2,550	Ton	1,200.00	3,042,000		
Corn (Grain)	2015	4,540	5.06	23,000	Ton	186.00	4,269,000	-51%	
	2014	10,300	5.02	51,700	Ton	168.00	8,666,000		
Hay	Alfalfa	2015	31,270	6.01	188,000	Ton	185.00	34,821,000	-20%
		2014	30,700	5.86	180,000	Ton	243.00	43,700,000	
	Grain	2015	2,150	3.34	7,160	Ton	124.00	885,000	-57%
		2014	3,740	2.69	10,000	Ton	205.00	2,064,000	
	Ryegrass	2015	7,230	3.35	24,200	Ton	110.00	2,666,000	-46%
		2014	7,850	3.21	25,200	Ton	195.00	4,924,000	
	Sudangrass	2015	6,330	3.85	24,400	Ton	152.00	3,705,000	-23%
		2014	7,500	3.46	26,000	Ton	186.00	4,825,000	
	Other ¹	2015	2,580	3.17	8,180	Ton	165.00	1,348,000	-7%
		2014	3,470	2.13	7,400	Ton	195.00	1,443,000	
Pasture, Irrigated ²	2015	31,600	-	-	Acre	128.00	4,046,000	14%	
	2014	27,600	-	-	Acre	129.00	3,557,000		
Pasture, Rangeland ³	2015	178,000	-	-	Acre	22.00	4,012,000	-15%	
	2014	183,000	-	-	Acre	25.90	4,746,000		
Safflower	2015	1,630	1.20	1,960	Ton	517.00	1,013,000	-24%	
	2014	2,640	0.97	2,560	Ton	522.00	1,334,000		
Triticale	2015	9,170	2.16	19,800	Ton	184.00	3,647,000	-32%	
	2014	10,600	2.70	28,800	Ton	187.00	5,382,000		
Wheat ⁴	2015	17,750	2.78	49,400	Ton	184.00	9,092,000	-34%	
	2014	21,700	2.75	59,600	Ton	231.00	13,789,000		
Miscellaneous ⁵	2015	5,130	-	-	-	-	5,618,000	368%	
	2014	1,850	-	-	-	-	1,200,000		
TOTAL FIELD CROPS	2015	300,230					\$78,454,000	-20%	
	2014	313,000					\$98,672,000		

Figures may not add due to rounding.

¹Previously reported as grass hay.

²Acreage from the 2015 permit data.

³Acreage calculated using data from the California Department of Conservation 2010-2012 Land Use Conversion Report.

⁴Includes irrigated and dryland wheat.

⁵Includes barley, corn silage, corn stubble, sorghum/milo (grain), straw, and sunflower oil.



Apiary Production

ITEM	YEAR	PRODUCTION	UNIT	VALUE		
				PER UNIT	TOTAL	% CHANGE
Apiary Products ¹	2015	-	-	-	687,000	-43%
	2014	-	-	-	1,208,000	
Pollination ²	2015	20,130	Colony	81.94	1,650,000	-7%
	2014	27,000	Colony	65.40	1,772,000	
TOTAL APIARY	2015				\$2,337,000	-22%
PRODUCTION	2014				\$2,980,000	

Figures may not add due to rounding.

¹Apiary products includes beeswax, honey, honeycomb, packaged bees, and queen bees.

²Value based on acreage of crops requiring bees for pollination and number of colonies required for adequate pollination. Colony fee varies by crop. Crops pollinated include almond, asparagus, cherry, kiwi, prune, sunflower, and vine seed.



Nursery Products

ITEM	YEAR	ACREAGE	TOTAL VALUE	% CHANGE
Nursery Stock ¹	2015	1,930	33,455,000	5%
	2014	1,920	31,939,000	
Propagative Stock ²	2015	224	4,193,000	15%
	2014	188	3,655,000	
TOTAL NURSERY	2015	2,150	\$37,648,000	6%
PRODUCTS	2014	2,110	\$35,594,000	

Figures may not add due to rounding.

¹Includes christmas trees, cut flowers, greenhouse plants, herbaceous and woody ornamentals, and turf.

²Includes grafted grapevines, grapevine rootstock, and grapevine cuttings.



Vegetable Crops

CROP	YEAR	HARVESTED ACRES	PRODUCTION		UNIT	VALUE			
			PER ACRE	TOTAL		PER UNIT	TOTAL	% CHANGE	
Tomatoes (Processing)	2015	11,800	44.42	524,000	Ton	80.44	42,156,000	-9%	
	2014	11,900	46.31	552,000	Ton	83.50	46,124,000		
Misc. Vegetables	Processing¹	2015	1,350	-	-	-	-	7,532,000	105%
		2014	1,090	-	-	-	-	3,680,000	
	Fresh²	2015	1,470	-	-	-	-	31,332,000	9%
		2014	1,990	-	-	-	-	28,663,000	
TOTAL VEGETABLE CROPS	2015	14,620					\$81,020,000	3%	
	2014	15,000					\$78,468,000		

Figures may not add due to rounding.

¹Includes cucumbers (pickling) and peppers.

²Includes beans, brassicas, cucumber, endive, garlic, herbs, leafy greens, melons, mushrooms, onions, peas, peppers, pumpkins, root vegetables, salad greens, sprouts, squash, sweet corn, tomatoes, tubers, and watermelon.



Seed Crops

CROP	YEAR	HARVESTED ACRES	PRODUCTION		UNIT	VALUE		
			PER ACRE	TOTAL		PER UNIT	TOTAL	% CHANGE
Sunflower	2015	4,720	1,190	5,600,000	Lb	1.23	6,904,000	-52%
	2014	9,890	1,210	11,963,000	Lb	1.21	14,455,000	
Watermelon	2015	309	405	125,000	Lb	4.74	594,000	122%
	2014	218	267	54,000	Lb	4.96	268,000	
Wheat ¹	2015	-	-	-	-	-	-	
	2014	575	3.00	1,730	Ton	240	414,000	
Squash ²	2015	155	295	45,750	Lb	25	1,160,000	
	2014	-	-	-	-	-	-	
Miscellaneous ³	2015	619	-	-	-	-	3,071,000	71%
	2014	315	-	-	-	-	1,799,000	
TOTAL SEED CROPS	2015	5,803					\$11,729,000	-31%
	2014	11,000					\$16,900,000	

Figures may not add due to rounding.

¹Because there were less than 3 growers of Wheat in 2015, Wheat has been added to Miscellaneous.

²Because there were more than 3 growers of Squash in 2015, Squash has been removed from Miscellaneous.

³Includes asparagus, cabbage, carrot, cucumber, melon, onion, wheat, and sudangrass.

Livestock & Poultry

ITEM	YEAR	NUMBER OF HEAD	TOTAL LIVEWEIGHT	UNIT	VALUE		
					PER UNIT	TOTAL	% CHANGE
Cattle & Calves ¹	2015	25,000	131,219	Cwt	210.00	27,556,000	-13%
	2014	31,000	166,700	Cwt	190.00	31,673,000	
Sheep & Lambs ²	2015	29,700	41,259	Cwt	162.00	6,684,000	-16%
	2014	32,950	48,540	Cwt	163.00	7,912,000	
Miscellaneous ³	2015	-	-	-	-	1,773,000	147%
	2014	-	-	-	-	716,700	
TOTAL LIVESTOCK & POULTRY	2015					\$36,013,000	-11%
	2014					\$40,302,000	

Figures may not add due to rounding.

¹Includes beef stocker gain, dairy calves, dairy yearlings, dairy replacement heifers, and dairy cull cows.

²Includes feeder lamb gain.

³Includes goats, hogs, and poultry (chickens, doves, geese, and turkeys).



Livestock & Poultry Products

ITEM	YEAR	PRODUCTION	UNIT	VALUE		
				PER UNIT	TOTAL	% CHANGE
Eggs, Chicken	2015	144,000	Dozen	3.14	453,000	-26%
	2014	204,000	Dozen	3.01	614,000	
Wool	2015	213,000	Lb	0.47	100,110	-15%
	2014	213,000	Lb	0.55	117,150	
Miscellaneous ⁴	2015	-	-	-	18,374,000	0%
	2014	-	-	-	18,374,000	
TOTAL LIVESTOCK & POULTRY PRODUCTS	2015				\$18,927,110	-1%
	2014				\$19,105,000	

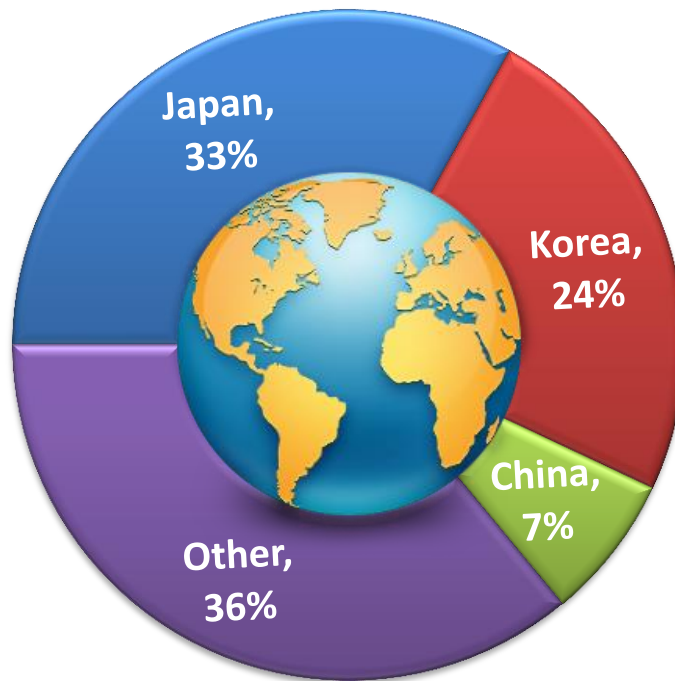
Figures may not add due to rounding.

⁴Includes alpaca fiber, goat milk, and market milk.

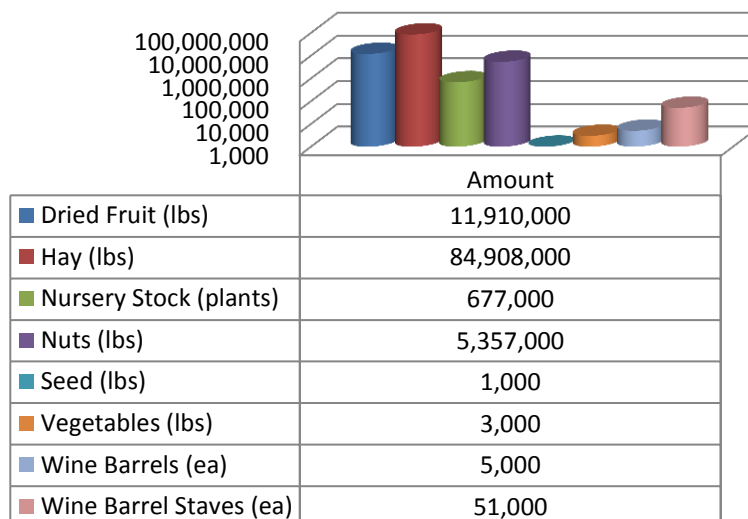
Solano County Export Markets

In 2015, the Solano County Agricultural Department issued 1143 phytosanitary certificates for commodities bound for export markets in 44 countries.

2015 Trade Partners and Number of Phytosanitary Certificates Generated			
Algeria (2)	Dominican Republic (34)	Jordan (3)	Poland (6)
Argentina (12)	Ecuador (1)	Korea, Republic of (272)	Saudi Arabia (1)
Australia (9)	France (24)	Kuwait (1)	Singapore (8)
Brazil (8)	Germany (7)	Malaysia (10)	Spain (13)
Bulgaria (1)	Greece (5)	Mexico (51)	Switzerland (1)
Canada (11)	Hong Kong (5)	Myanmar (1)	Taiwan (15)
Chile (6)	India (29)	Netherlands (8)	Thailand (33)
China (81)	Indonesia (22)	Norway (1)	Turkey (2)
Colombia (21)	Israel (31)	Oman (1)	United Arab Emirates (3)
Costa Rica (4)	Italy (4)	Peru (1)	United Kingdom (1)
Denmark (2)	Japan (375)	Philippines (6)	Viet Nam (11)



Commodity Amounts Sent To Trade Partners

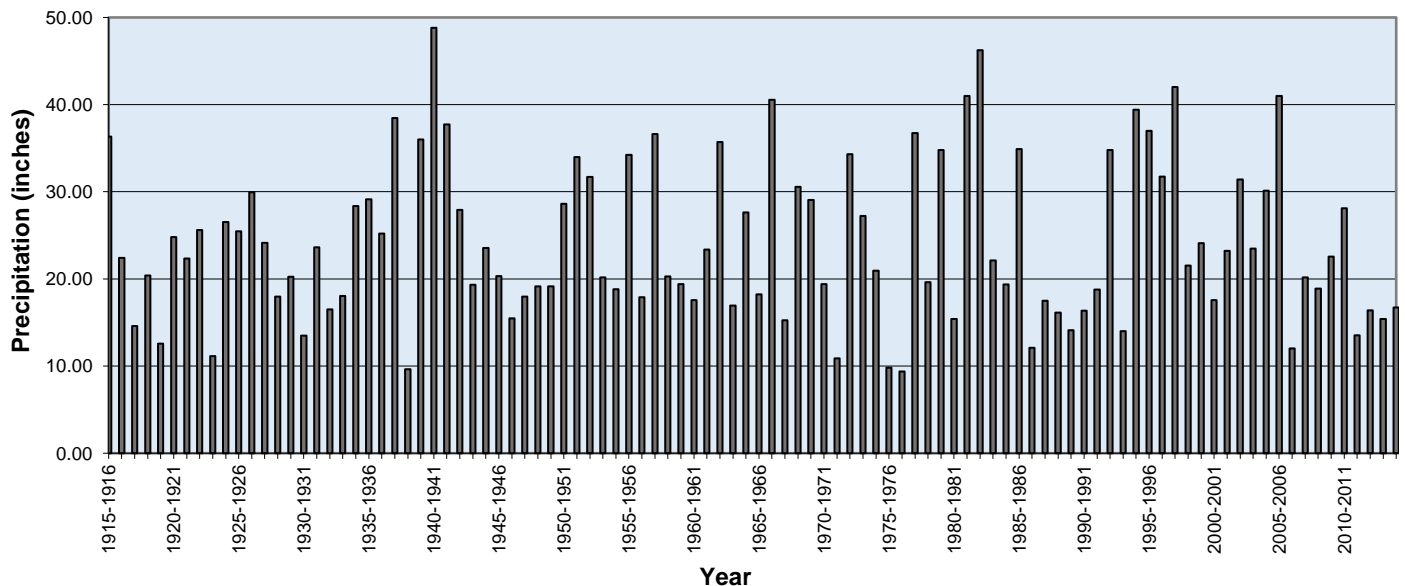


100 Years of Annual Precipitation at Vacaville, CA

YEAR	INCHES	YEAR	INCHES	YEAR	INCHES	YEAR	INCHES
1915-1916	36.32	1940-1941	48.82	1965-1966	18.24	1990-1991	16.36
1916-1917	22.40	1941-1942	37.72	1966-1967	40.54	1991-1992	18.77
1917-1918	14.61	1942-1943	27.94	1967-1968	15.26	1992-1993	34.79
1918-1919	20.41	1943-1944	19.33	1968-1969	30.56	1993-1994	14.01
1919-1920	12.58	1944-1945	23.55	1969-1970	29.07	1994-1995	39.43
1920-1921	24.79	1945-1946	20.32	1970-1971	19.42	1995-1996	36.99
1921-1922	22.34	1946-1947	15.47	1971-1972	10.89	1996-1997	31.74
1922-1923	25.62	1947-1948	17.99	1972-1973	34.30	1997-1998	42.01
1923-1924	11.15	1948-1949	19.15	1973-1974	27.23	1998-1999	21.52
1924-1925	26.53	1949-1950	19.16	1974-1975	20.93	1999-2000	24.09
1925-1926	25.48	1950-1951	28.61	1975-1976	9.84	2000-2001	17.56
1926-1927	29.96	1951-1952	33.99	1976-1977	9.38	2001-2002	23.24
1927-1928	24.14	1952-1953	31.72	1977-1978	36.75	2002-2003	31.42
1928-1929	17.98	1953-1954	20.17	1978-1979	19.64	2003-2004	23.49
1929-1930	20.26	1954-1955	18.81	1979-1980	34.79	2004-2005	30.14
1930-1931	13.49	1955-1956	34.24	1980-1981	15.39	2005-2006	40.98
1931-1932	23.64	1956-1957	17.90	1981-1982	41.00	2006-2007	12.01
1932-1933	16.50	1957-1958	36.64	1982-1983	46.26	2007-2008	20.17
1933-1934	18.06	1958-1959	20.30	1983-1984	22.12	2008-2009	18.89
1934-1935	28.35	1959-1960	19.40	1984-1985	19.37	2009-2010	22.55
1935-1936	29.12	1960-1961	17.58	1985-1986	34.89	2010-2011	28.12
1936-1937	25.22	1961-1962	23.36	1986-1987	12.09	2011-2012	13.53
1937-1938	38.46	1962-1963	35.71	1987-1988	17.48	2012-2013	16.39
1938-1939	9.64	1963-1964	16.93	1988-1989	16.15	2013-2014	15.42
1939-1940	36.02	1964-1965	27.63	1989-1990	14.12	2014-2015	16.74

The average annual precipitation over the 100 year period from October 1, 1915 to September 30, 2015 is 24.12 inches.

Annual Precipitation (Vacaville, CA)



Annual Precipitation is from October 1 to September 30

Source: NOAA National Climatic Data Center

Sustainable Agriculture – 2015 Highlights

Pest Prevention

The California Food and Agricultural Code mandates pest prevention programs to prevent the introduction and spread of pests in California. Pest prevention involves Pest Exclusion, Pest Detection, Pierce's Disease Control, and the State Export Certification Program.

Pest Exclusion is the first line of defense to prevent detrimental, non-native pests from entering the county.

A total of 216 premise visits occurred in at shipping terminals, nurseries, and residences in 2015. During these visits 1,225 shipments of plant material, seed, and household goods were inspected with 4 actionable pest finds. 21 shipments were rejected for live pests, material not properly certified, or improper container markings. Rejected plant material is returned to the shipper, reconditioned and released, or destroyed.

Department personnel inspected 27 production nurseries, comprising 2,036 acres, for pests and diseases. These nurseries produce a variety of nursery stock, including ornamental plants, sod (turfgrass), vegetable plants, and fruit trees, for sale within California as well as to other states and North American countries.

The **Pierce's Disease Control Program** works to prevent the spread of the Glassy-winged Sharpshooter (GWSS) into Solano County, which is the main insect vector of Pierce's Disease. Department personnel inspected 433 shipments of nursery stock arriving from infested counties in California.



European Grapevine Moth trap in a vineyard

Pest Detection is Solano County's second line of defense against the introduction and spread of insect pests. Insect traps are placed and monitored to detect whether a pest is present in a particular location. In 2015, 27,062 trap inspections were conducted.

Pest Detection Trapping			
TARGET PEST	HOSTS	# OF TRAPS	# OF TRAP SERVICINGS
ASIAN CITRUS PSYLLID (<i>Diaphorina citri</i>)	Ornamental & nursery plants	277	0*
APPLE MAGGOT (<i>Rhagoletis pomonella</i>)	Fruit trees	47	373
EUROPEAN GRAPEVINE MOTH (<i>Lobesia botrana</i>)	Vineyards	788	6,975
GLASSY-WINGED SHARPSHOOTER (<i>Homalodisca vitripennis</i>)	Nursery & urban landscape plants	741	7,916
GYPSY MOTH (<i>Lymantria dispar</i>)	Shade trees	240	1,232
JAPANESE BEETLE (<i>Popillia japonica</i>)	Turf & roses	207	1,098
LIGHT BROWN APPLE MOTH (<i>Epiphyas postvittana</i>)	Nursery & urban ornamental plants	226	2,061
MEDITERRANEAN FRUIT FLY (<i>Ceratitis capitata</i>)	Fruit trees	231	2,843
MELON FLY (<i>Bactrocera cucurbitae</i>)	Vegetable gardens	88	1,266
ORIENTAL FRUIT FLY (<i>Bactrocera dorsalis</i>)	Fruit trees	86	1,027
OTHER FRUIT FLIES (McPhail traps)	Fruit trees & vegetables	88	2,271

*ACP traps were deployed in 2015. Servicing began in 2016.

Sustainable Agriculture – 2015 Highlights

The **Phytosanitary Certification Program** ensures that plants and plant commodities exported to other states or foreign countries from Solano County are free from injurious pests. Solano County staff performed 709 Phytosanitary Field Inspections on 6,183 acres of seed crops.

The **Sudden Oak Death** program works to prevent the spread of Sudden Oak Death, the disease caused by the pathogen *Phytophthora ramorum*. Department personnel inspected 62 production shipping nurseries, and found zero incidences of Sudden Oak Death.

Pest Eradication

The primary objective of the Pest Eradication Program is to quickly and efficiently eliminate infestations of serious agricultural pests with limited distribution before they are able to establish and spread in California.

Egyptian Broomrape (*Orobanche aegyptiaca*) is a parasitic plant that infects many economically important crops, such as tomato, sunflower, bell pepper, carrot, and various legumes. It is a major problem in the Middle East and eastern Europe.

The first U.S. detection of Egyptian broomrape was found in a processing tomato field in Solano County in July 2014. Since then, mitigation and eradication efforts have been under way. The tomato crop residue was flamed with a propane burner, burnt seeds were tested for viability, the field was disked, methyl bromide was applied, and a trap crop was planted. Trace forward and trace back activities were also conducted on seed lots and equipment. In 2015, Solano County Agriculture Department personnel assisted CDFA with two phytosanitary field inspections of the trap crop. The field will be monitored through 2017, and must be found free of the pest for 3 years before eradication can be declared.

Organic Farming

Solano County had 48 organic farms registered for organic production. These growers farmed a total of 1,870 acres to produce assorted organic berries, herbs, fruits, vegetables, microgreens, nuts, cut flowers, and olive oil. In addition, Solano County had over 5,148 acres of organic ryegrass, pastureland and rangeland. Organic eggs and poultry were also produced.

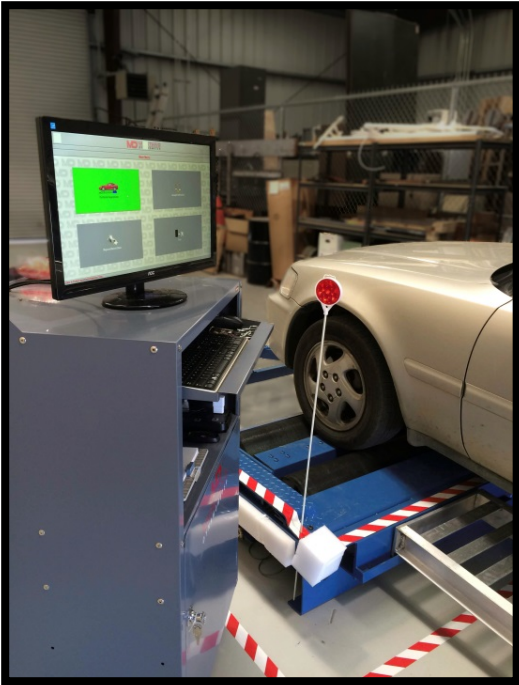


Certified Farmers Markets

The purpose of farmers' markets is to allow producers of agricultural commodities to sell directly to the public. Anyone who wishes to sell at a farmers' market must obtain a Certified Producers Certificate from the Agricultural Commissioner in the county where the produce was grown. Solano County certificates were issued to 42 producers in 2015, and eight farmers' markets were certified by the Agricultural Commissioner to market local and regional produce in Solano County.

WEIGHTS & MEASURES DIVISION

The Solano County Division of Weights & Measures protects both buyers and sellers by inspecting devices and performing petroleum and weighmaster audits. Weighing devices checked for accuracy range from small scales used for weighting gold or gems up to 400,000 pound vehicle scales used to weigh rail cars. Measuring devices range from taxi meters, to gasoline dispensers and on up to cryogenic flow meters used to measure quantities of liquid carbon dioxide. The quantity control program is in place to ensure fair trade for packaged goods. These include items you would purchase at a supermarket, department store, or a home improvement store. Inspectors periodically and in response to consumer complaints inspect packaged goods for accuracy in net weight.



A new capability of the Division comes with the installation of a Dynamometer. This machine is able to test odometers, speedometers and Taxi meters with greater accuracy, and in a much safer environment. Past testing had to be done on a road course which presented challenges with traffic, safety, and difficulty in finding a suitable unobstructed straight section of roadway two miles in length. Now taxi and ambulance companies will bring in their units for testing on the Dyno.



Currently Solano County Weights & Measures has 63 taxi meters and 84 odometers registered.

Solano County currently has 689 registered establishments with 16,542 various commercial devices shown below:

Fabric/Cordage/Wire Meters	38	Computing Scales	896
LPG (Propane) Meters	50	Counter Scales	142
Misc. Measuring Devices	12	Livestock Scales	20
Odometers	84	Crane Scales	3
Retail Motor Fuel Meters	4,191	Portable Platform Scales	69
Retail Water Meters	58	Hanging Scales	9
Taxi Meters	63	Hopper/Tank Scales	14
Elec., Vapor, Water Sub-meters	10,053	Monorail Meat Beam	3
Vehicle Meters	30	Vehicle & Railway Scales	55
Wholesale Meters	44	Dormant Scales	32

The Solano County Division of Weights & Measures in conjunction with the other 57 county Weights & Measures Divisions and the California Division of Measurement Standards is committed to ensuring equity in the market place throughout California.

GENERAL INFORMATION

POPULATION¹

Solano County Population: 429,552

Benicia 27,689	Dixon 19,158	Fairfield 111,891	Rio Vista 8,193
Suisun City 28,888	Vacaville 94,702	Vallejo 119,683	Unincorporated 19,348

AREA

Land Area (Square Miles) ²	909.95	Urban and Built Up Land Area (Acres) ²	60,027
Land Area (Acres) ²	582,368	Land Area in Farms (Acres) ³	407,101
Water Area (Square Miles) ²	84.61	Total Cropland (Acres) ³	169,637
Water Area (Acres) ²	54,153	Irrigated Cropland (Acres) ³	130,909

FARMS

Average US Size (Acres) ³	434	Number of Farms in Solano County ³	860
Average California Size (Acres) ³	328	Full Time	462
Average Solano County Size (Acres) ³	473	Part Time	398

STATE RANKING

County Rank by Gross Value of Agricultural Production (2014)⁴

27th

Commodity Rank by Gross Value of Production (2014)⁴

1st - Triticale

3rd - Sudan Hay

3rd - Sheep & Lamb

FARMING REGIONS

Dixon Ridge	Jepson Prairie	Suisun Valley
Elmira/Maine Prairie	Montezuma Hills	Western Hills
Green Valley	Pleasants/Vaca/Lagoon Valleys	Winters
	Ryer Island	

LOCAL ASSESSED PROPERTY VALUES (2015)⁵

\$46 Billion

TRANSPORTATION

Total Maintained County Road Miles

578

Major Roadways

Interstates 80, 505, 680, and 780
State Routes 12, 29, 37, 84, 113, and 220

¹Source: California Department of Finance, E-1: City/County Population Estimates as of January 1, 2015

²Source: California Department of Conservation 2012 Land Use Conversion

³Source: USDA National Agricultural Statistics Service 2012 Census of Agriculture

⁴Source: CDFA California Agricultural Statistics California County Agricultural Commissioners' Reports 2014

⁵Source: 2015 Solano County Annual Report