



SOLANO COUNTY RECOVERS

www.SolanoCountyRecovers.Org



Solano County Fire Recovery Newsletter

A resource guide for Solano County residents impacted by the LNU Lightning Complex fire

Origins of the LNU Lightning Complex Fire

In the early morning hours of Sunday, August 16, 2020, and again on Monday, August 17, a series of highly unusual thunderstorms rolled through most of northern California, resulting in short thunderstorms that produced a reported 10,849 lightning strikes that – within a 72-hour period – sparked 376 wildfires statewide. The LNU Lightning Complex fire, which is made of numerous lightning-sparked fires, including the Hennessey Fire, Gamble, Green, Markley, Spanish and Morgan Fires, all started out small, fed by strong winds, grew together into one massive fire complex.

Impacts of the LNU Lightning Complex fire

According to Cal Fire, the LNU Lightning Complex fire has been active for more than a month, burned more than 363,000 acres throughout six Counties, including Solano, Napa, Sonoma, Yolo, Lake and Colusa, and is at 98 percent containment (as of September 30, 2020). The LNU Lightning Complex

fire claimed the lives of five individuals, two in Solano County, and injured five more. The fire destroyed 1,491 residential and commercial structures and severely damaged more than 230 structures. The cleanup process has officially begun in Solano County, as well as in neighboring counties impacted by the fire, and will continue for the time being.

LNU LIGHTNING COMPLEX in SOLANO COUNTY

309	Homes Destroyed
854	Structures Damaged
1,426	Utility Poles Replaced
42,000	Acres Burned



Debris Removal **PHASE ONE**



Fire recovery crews from the California Department of Toxic Substances Control (DTSC) work to cleanup properties that were impacted by the LNU Lightning Complex fire in Solano County - September 2020

FIRE RECOVERY, PHASE ONE **Household Hazardous Waste Removal (HHW)**

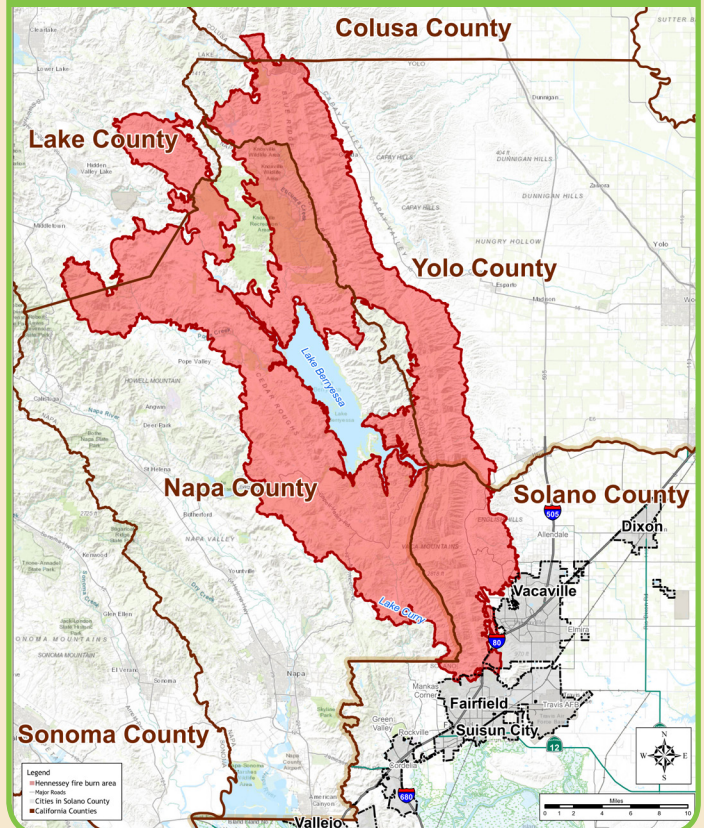
On September 9, 2020 teams from Solano County Environmental Health and California Department of Toxic Substances Control (DTSC) began assessing properties within the burn area and removing any HHW that pose a threat to human health and the environment such as batteries, pesticides, fertilizers, cleaning products and paints. This work is ongoing and is anticipated to be completed by early October. Phase One funding is provided through a coordinated effort between local, state, and federal agencies so there is no cost to property owners. A notice is posted on the property after it has been cleared of HHW so it is normal to still see fire debris and ash remaining on the property that is to be removed during Phase Two.



More info on HHW removal at the Department of Toxic Substances Control website, <https://DTSC.Ca.Gov>

Solano County, California

LNU Lightning Complex





Debris Removal **PHASE TWO**

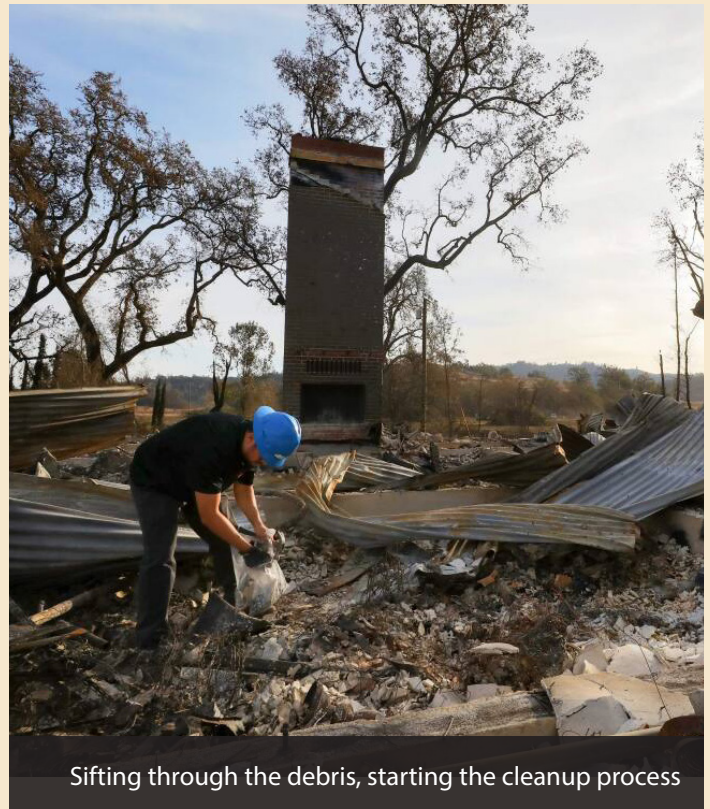
Phase Two includes the removal of all structure debris, asbestos identified, but not removed during Phase One, foundations, trees that present a safety hazard, and some soil to ensure the site is clean and safe for rebuilding. The remaining fire debris and ash may contain hazardous substances like heavy metals and asbestos fibers. Appropriate PPE must be worn to handle this debris. Before this work can be done, property owners must decide if they prefer to proceed with a **Phase Two - Private Option or Phase Two - Public Option**.

PRIVATE CLEANUP OPTION

Property owners who choose not to wait to participate in a government-sponsored cleanup program, must hire a licensed contractor(s) to remove fire debris and cleanup their property. A Phase Two Private Option Application and Work Plan must be approved by Solano County Environmental Health prior to commencement of work. Private debris removal and cleanup is done at the property owner's expense and must follow the standards set forth by the state for wildfire debris removal.

PUBLIC CLEANUP OPTION

On September 30, Solano County received notification that FEMA approved funding for a government sponsored cleanup program in coordination with local, state, and federal agencies. At the time this newsletter went to print, program details had not been announced including how quickly the government contractors could begin the work. This would be a no cost program to the property owner if they elect to use this option. It is important to note that any insurance proceeds that the owner would otherwise be entitled to for debris clean up under their policy would be transferred to FEMA to offset costs of the program. Any and all costs beyond insurance coverage will not be charged to the property owner but will be covered by the government sponsored cleanup program.



Sifting through the debris, starting the cleanup process

RESOURCE INFORMATION

Property owners impacted by the LNU Lighting Complex fire can receive notifications related to debris removal and rebuilding by visiting the <https://tinyurl.com/y23zcl79>, by emailing **EHDebrisRemoval@SolanoCounty.com** and by phone at **(707) 784-6765**.



LOCAL ASSISTANCE CENTER

Solano County's Local Assistance Center provides clear and accurate information to improve the health and well-being of our community during the wildfire recovery.

SERVICES INCLUDE

- Financial Assistance
- Document Replacement
- Mail Delivery
- Healthcare and Mental Health
- Temporary Housing
- Veteran Resources
- Agricultural Assistance
- Voter Registration

VIRTUAL ASSISTANCE, 24/7

SolanoCountyRecovers.Org

IN-PERSON ASSISTANCE

675 Texas Street, 1st Floor,
Fairfield, CA - 9 a.m. - 5 p.m.,
Mon.-Fri. By appointment only -
call (707) 784-1575

ENVIRONMENTAL HEALTH DEBRIS REMOVAL PROGRAM

(707) 784-6765



RESIDENTS IMPACTED BY WILDFIRES: APPLY TO FEMA BY OCTOBER 21 FOR AID

FEMA grants help eligible survivors pay for rent, home repair/replacement and other serious disaster related needs. Apply by or before October 21 at www.DisasterAssistance.Gov and (800) 621-3362.



Be Aware of Attempts at Fraud

The Solano County District Attorney's Office is alerting Solano County residents impacted by the LNU Lightning Complex fire to be aware of attempts at fraud, including price gouging and construction fraud. If you believe you have been a victim of fraud, or an attempt at fraud is being made against you – you have options to protect yourself, including:

- Talk to your insurance agent for advice
- Check all contractor references
- Make sure the contractor is licensed
- Don't be rushed into signing a contract
- Hire a contractor with a local reputation
- Always get the job details in writing
- Never fully pay for a project before work is complete
- Contact the California Insurance Commissioner at (800) 927-4357 and online at www.Insurance.Ca.Gov



Solano County's Regional Emergency Notification System

ALERT SOLANO

Register for Alert Solano to receive critical updates, including severe weather, missing persons and natural disasters - on any device. www.AlertSolano.com

Take care of yourself and others

The Solano County Department of Health and Social Services, Behavioral Health division has a free warmline open for individuals experiencing anxiety, stress and depression. Call (707) 784-8539 Mon. - Fri., 8 a.m. - 5 p.m.