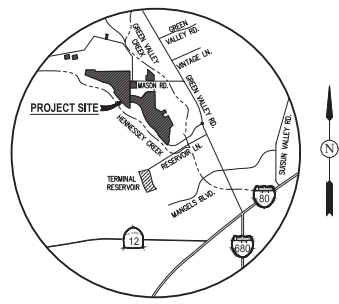


CONTACTS & GENERAL NOTES:

- OWNERS: SEE OWNERSHIP TABLE
- PROJECT MANAGER: WAGNER ENTERPRISES, LLC  
148 MASON AVENUE  
SAN RAFAEL, CA 94903  
PHONE: (415) 730-6718  
CONTACT: CHARITY WAGNER
- CIVIL ENGINEER: CARLSON, BARBER & GIBSON, INC.  
2633 CAMINO RAMON, SUITE 350  
SAN RAMON, CA 94583  
PHONE: (925) 866-0322  
CONTACT: JASON D. VOGAN, RCE 56299
- GEOTECHNICAL ENGINEER: ENDO, INC.  
2002 DOW CANYON PLACE, SUITE 250  
SAN RAMON, CA 94583  
PHONE: (925) 866-9033  
CONTACT: JOSEF KOULIC, CE 2677
- BIOLOGIST: STANTEC  
55 CAPITAL MALL, SUITE 650  
SACRAMENTO, CA 95834  
PHONE: (916) 442-3230  
CONTACT: MICHELLE TOWAR
- TOPOGRAPHIC SOURCE: GEOMAPS INC.  
3362 MATHER FIELD ROAD  
RANCHO CORONA, CA 92670  
(916) 361-9133
- CONTOUR INTERVAL: 1-FOOT EXISTING
- DATUM: NAVD88
- FLOOD ZONE: ZONE X  
REFER TO FLOOD INSURANCE RATE MAP  
PANEL 06090343E (MAY 4, 2009)  
PANEL 06090343E (MAY 4, 2009)
- ASSESSORS PARCEL NO: SEE OWNERSHIP TABLE
- SITE AREA: 995.6 ± AC
- LAND USE: SP - SPECIAL PROJECT AREA

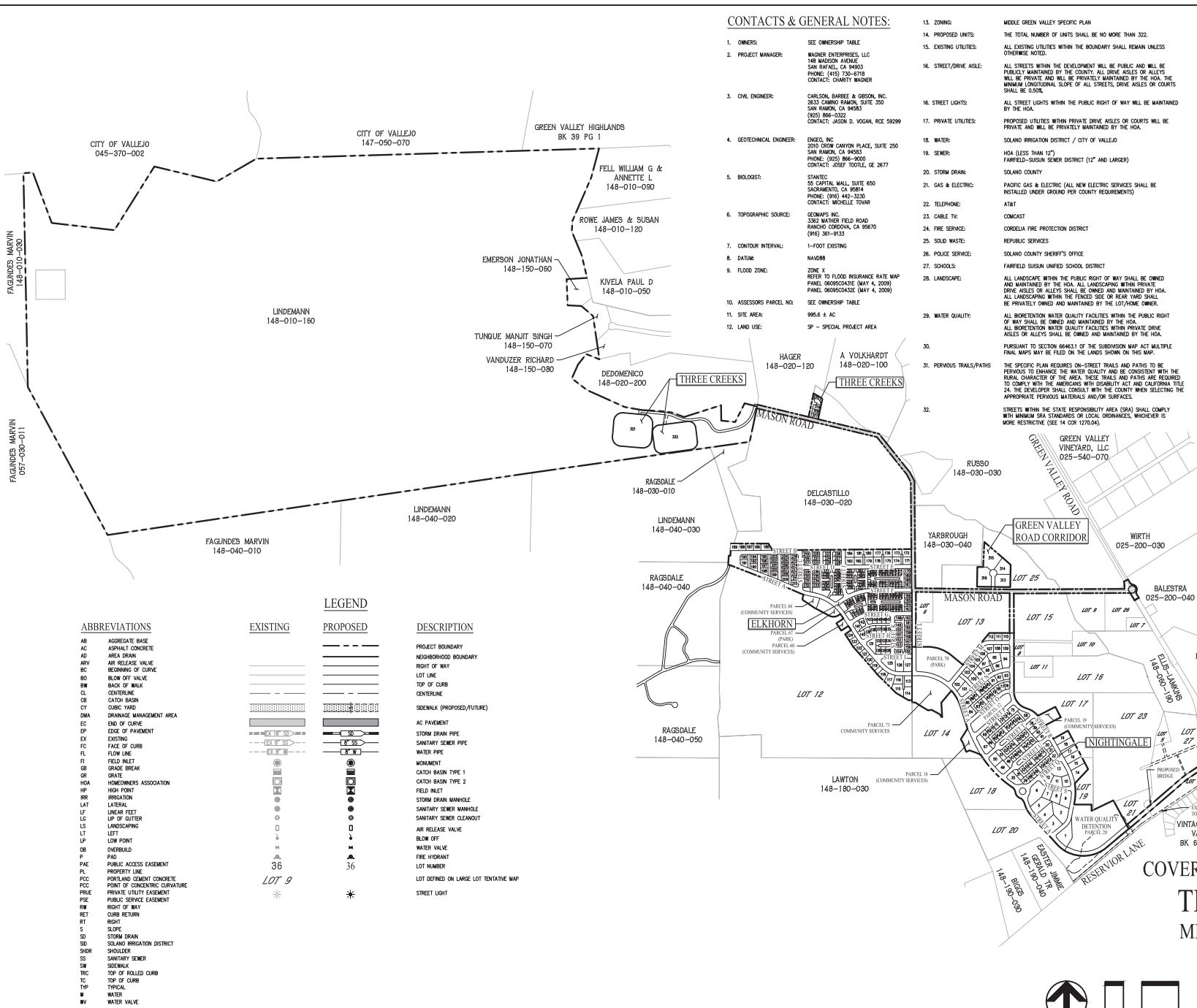
- ZONING: MIDDLE GREEN VALLEY SPECIFIC PLAN  
THE TOTAL NUMBER OF UNITS SHALL BE NO MORE THAN 322.  
ALL EXISTING UTILITIES WITHIN THE BOUNDARY SHALL REMAIN UNLESS OTHERWISE NOTED.
- STREET/DRIVE ASIDE: ALL STREETS WITHIN THE DEVELOPMENT WILL BE PUBLIC AND WILL BE PUBLICLY MAINTAINED BY THE COUNTY. ALL DRIVE ASIDES OR ALLEYS WILL BE PRIVATE AND WILL BE PRIVATELY MAINTAINED BY THE HOA. THE MINIMUM CONDITIONAL SLOPE OF ALL STREETS, DRIVE ASIDES OR COURTS SHALL BE 0.50%.
- STREET LIGHTS WITHIN THE PUBLIC RIGHT OF WAY WILL BE MAINTAINED BY THE HOA.
- PROPOSED UTILITIES WITHIN PRIVATE DRIVE ASIDES OR COURTS WILL BE PRIVATE AND WILL BE PRIVATELY MAINTAINED BY THE HOA.
- SOLANO IRRIGATION DISTRICT / CITY OF VALLEJO
- SOLANO COUNTY
- PACIFIC GAS & ELECTRIC (ALL NEW ELECTRIC SERVICES SHALL BE INSTALLED UNDER GROUND PER COUNTY REQUIREMENTS)
- AT&T
- COMCAST
- CORNELIA FIRE PROTECTION DISTRICT
- REPUBLIC SERVICES
- SOLANO COUNTY SHERIFF'S OFFICE
- FARFIELD SUSD UNIFIED SCHOOL DISTRICT
- LANDSCAPE: ALL LANDSCAPE WITHIN THE PUBLIC RIGHT OF WAY SHALL BE OWNED AND MAINTAINED BY THE HOA. ALL LANDSCAPING WITHIN PRIVATE DRIVE ASIDES OR ALLEYS SHALL BE OWNED AND MAINTAINED BY HOA. ALL LANDSCAPING WITHIN THE TENDED SIDE OR REAR YARD SHALL BE PRIVATELY OWNED AND MAINTAINED BY THE LOT/HOME OWNER.
- PERVIOUS TRAILS/PATHS: THE SPECIFIC PLAN REQUIRES ON-STREET TRAILS AND PATHS TO BE PERVIOUS TO ENHANCE THE WATER QUALITY AND BE CONSISTENT WITH THE RURAL CHARACTER OF THE AREA. THESE TRAILS AND PATHS ARE REQUIRED TO COMPLY WITH THE AMERICANS WITH DISABILITY ACT AND CALIFORNIA TITLE 24. THE DEVELOPER SHALL CONSULT WITH THE COUNTY WHEN SELECTING THE APPROPRIATE PERVIOUS MATERIALS AND/OR SURFACES.
- STREETS WITHIN THE STATE RESPONSIBILITY AREA (SRA) SHALL COMPLY WITH MINIMUM SRA STANDARDS OR LOCAL ORDINANCES, WHICHEVER IS MORE RESTRICTIVE (SEE 14 CCR 122004).



VICINITY MAP  
NOT TO SCALE

OWNERSHIP TABLE	
OWNER	APN
LINDEMANN	148-050-020
A VOLKHART	148-020-110
WILEY	148-030-050
RUSSO	148-050-030
YARBROUGH	148-060-210
RUSSO	148-060-150
YARBROUGH	148-060-140
LEMASTERS	148-060-240
MAIER	148-060-270
LEMASTERS	148-060-320
LEMASTERS	148-060-260
LINDEMANN	148-010-160
LUM	148-060-220

SHEET INDEX	
Sheet Number	Sheet Title
TM1	COVER SHEET & GENERAL NOTES
TM2	TYPICAL STREET SECTIONS & DETAILS
TM3	EXISTING CONDITIONS
TM4	OVERALL SITE PLAN - EAST
TM5	OVERALL SITE PLAN - WEST
TM6	DIMENSIONED SITE PLAN
TM7	DIMENSIONED SITE PLAN
TM8	DIMENSIONED SITE PLAN
TM9	DIMENSIONED SITE PLAN
TM10	DIMENSIONED SITE PLAN
TM11	DIMENSIONED SITE PLAN
TM12	DIMENSIONED SITE PLAN
TM13	DIMENSIONED SITE PLAN
TM14	OVERALL STORMWATER FACILITIES
TM15	OVERALL SEWER FACILITIES
TM16	OVERALL WATER FACILITIES
TM17	PRELIMINARY GRADING & UTILITY PLAN
TM18	PRELIMINARY GRADING & UTILITY PLAN
TM19	PRELIMINARY GRADING & UTILITY PLAN
TM20	PRELIMINARY GRADING & UTILITY PLAN
TM21	PRELIMINARY GRADING & UTILITY PLAN
TM22	PRELIMINARY GRADING & UTILITY PLAN
TM23	PRELIMINARY GRADING & UTILITY PLAN
TM24	GRADING SECTIONS & DETAILS
TM25	STORMWATER CONTROL PLAN
TM26	STORMWATER CONTROL PLAN
TM27	CONTEXTUAL MAP

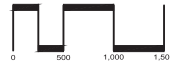


LEGEND	DESCRIPTION
	PROJECT BOUNDARY
	NEIGHBORHOOD BOUNDARY
	RIGHT OF WAY
	LOT LINE
	TOP OF CURB
	CENTERLINE
	SIDEWALK (PROPOSED/FUTURE)
	AC PAVEMENT
	STORM DRAIN PIPE
	SANITARY SEWER PIPE
	WATER PIPE
	MANHOLE
	CATCH BASIN TYPE 1
	CATCH BASIN TYPE 2
	FIELD INLET
	STORM DRAIN MANHOLE
	SANITARY SEWER MANHOLE
	SANITARY SEWER CLEANOUT
	AIR RELEASE VALVE
	BLOW OFF
	WATER VALVE
	FIRE HYDRANT
	LOT NUMBER
	LOT DEFINED ON LARGE LOT TENTATIVE MAP
	STREET LIGHT

ABBREVIATIONS	DESCRIPTION
AB	AGGREGATE BASE
AC	ASPHALT CONCRETE
AD	AREA DRAIN
ARV	AIR RELEASE VALVE
BC	BEGINNING OF CURVE
BO	BLOW OFF VALVE
BW	BACK OF WALK
CL	CENTERLINE
CB	CATCH BASIN
CT	CURB YARD
DMA	DRAINAGE MANAGEMENT AREA
EC	END OF CURVE
EP	EDGE OF PAVEMENT
EX	EXISTING
FC	FACE OF CURB
FLW	FLOW LINE
FI	FIELD INLET
GB	GRADE BREAK
GR	GRATE
HOA	HOMEOWNERS ASSOCIATION
HP	HIGH POINT
IR	IRRIGATION
LAT	LATERAL
LF	LINEAR FEET
LG	LIFT OF GUTTER
LS	LANDSCAPING
LT	LEFT
LP	LOW POINT
OB	OVERBUILD
P	PAV
PAC	PUBLIC ACCESS EASEMENT
PL	PROPERTY LINE
PCC	PORTLAND CEMENT CONCRETE
PCC	POINT OF CONCERN CURVATURE
PULE	PRIVATE UTILITY EASEMENT
PSE	PUBLIC SERVICE EASEMENT
RW	RIGHT OF WAY
RET	CURB RETURN
RT	RIGHT
S	SLOPE
SD	STORM DRAIN
SD	SOLANO IRRIGATION DISTRICT
SHR	SHOULDER
SS	SANITARY SEWER
SW	SIDEWALK
TBC	TOP OF ROLLED CURB
TC	TOP OF CURB
TP	TYPICAL
W	WATER
WV	WATER VALVE

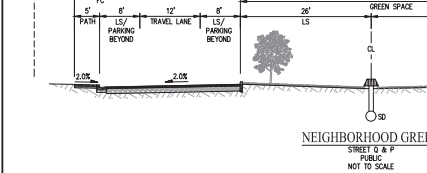
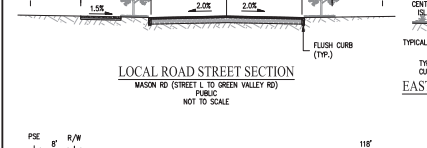
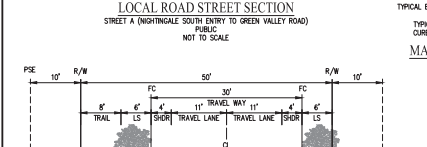
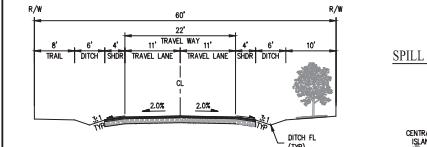
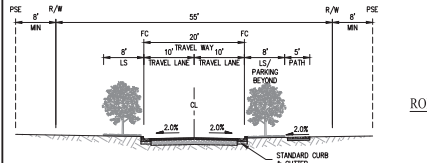
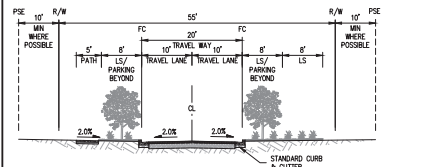
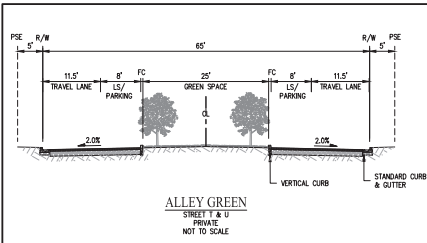
COVER SHEET & GENERAL NOTES  
TENTATIVE MAP  
MIDDLE GREEN VALLEY

SOLANO COUNTY CALIFORNIA  
SCALE: 1" = 500' DATE: JULY 20, 2022



SAN RAMON • (925) 866-0322  
ROSEVILLE • (916) 788-4456  
WWW.CBG.COM

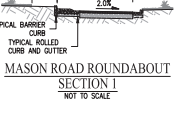
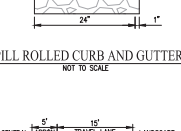
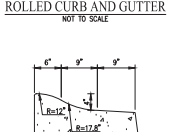
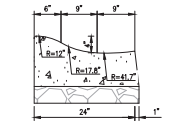




COURTYARD TYPICAL LOT GRADING

BUNGALOW TYPICAL LOT GRADING

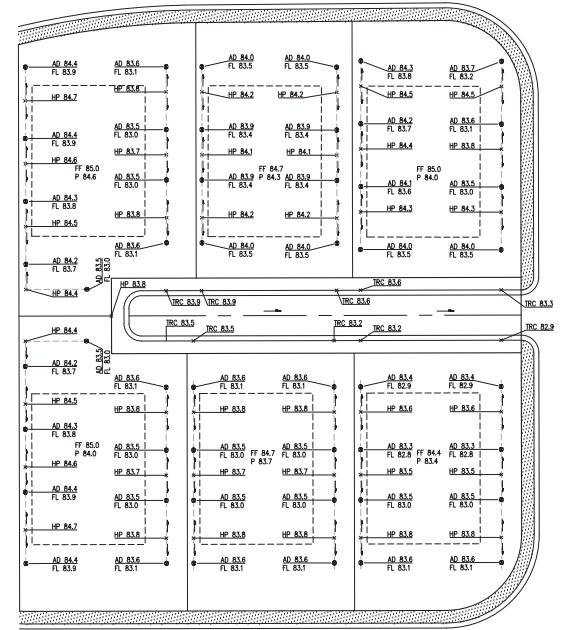
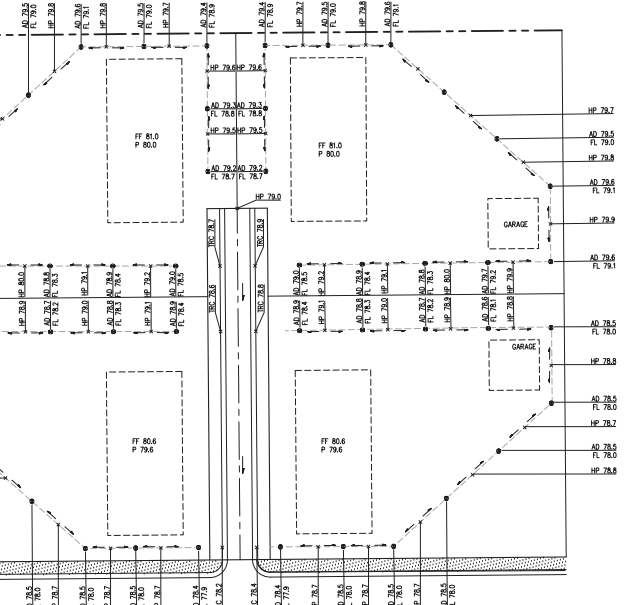
FARMSTEAD TYPICAL LOT GRADING



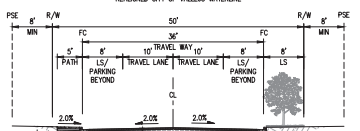
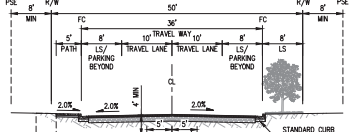
FARMSTEAD TYPICAL LOT GRADING FOR FRONT DRAINING DRIVE AISLE

SHARED DRIVEWAY

ALLEY STREET SECTION



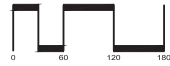
BUNGALOW TYPICAL LOT GRADING FOR FRONT DRAINING DRIVE AISLE



TYPICAL STREET SECTIONS & DETAILS

TENTATIVE MAP  
MIDDLE GREEN VALLEY

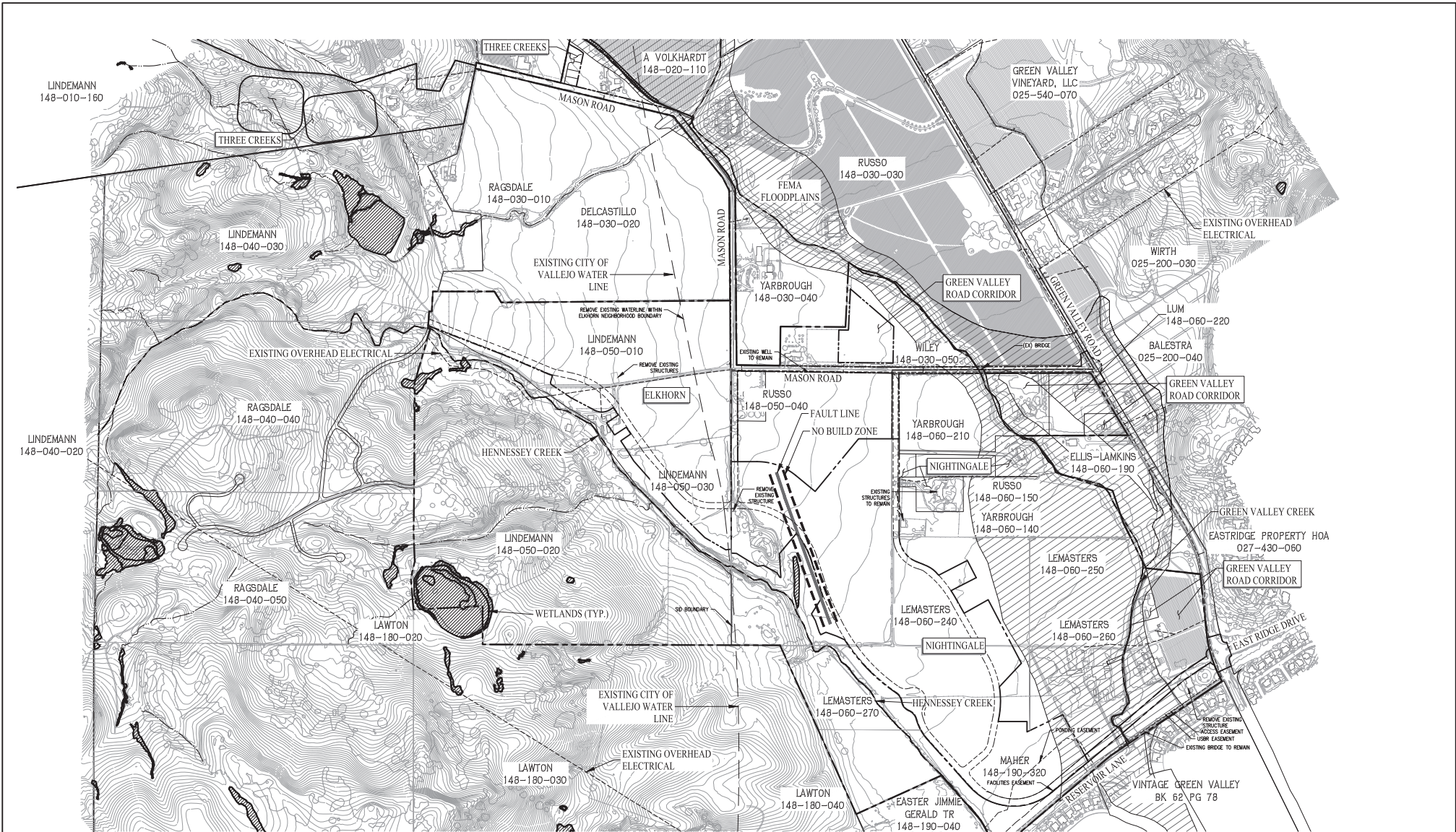
SOLANO COUNTY CALIFORNIA  
SCALE: 1" = 60' DATE: JULY 20, 2022



SAN RAMON (925) 866-0322  
ROSEVILLE (916) 788-4456  
WWW.CBGMOD.COM  
SURVEYORS PLANNERS

SHEET NO.  
**TM2**  
OF 27 SHEETS



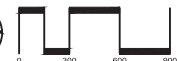


**LEGEND**

	FAULT LINE		FLOOD ZONE
	NO BUILD ZONE		WETLANDS
	CREEK		
	DRAINAGE ROUTE		
	EXISTING CITY OF VALLEJO WATER LINE		
	EXISTING OVERHEAD ELECTRICAL		
	PROJECT BOUNDARY		
	PROPOSED NEIGHBORHOOD BOUNDARY		
	LOT LINE		

**EXISTING CONDITIONS  
TENTATIVE MAP  
MIDDLE GREEN VALLEY**

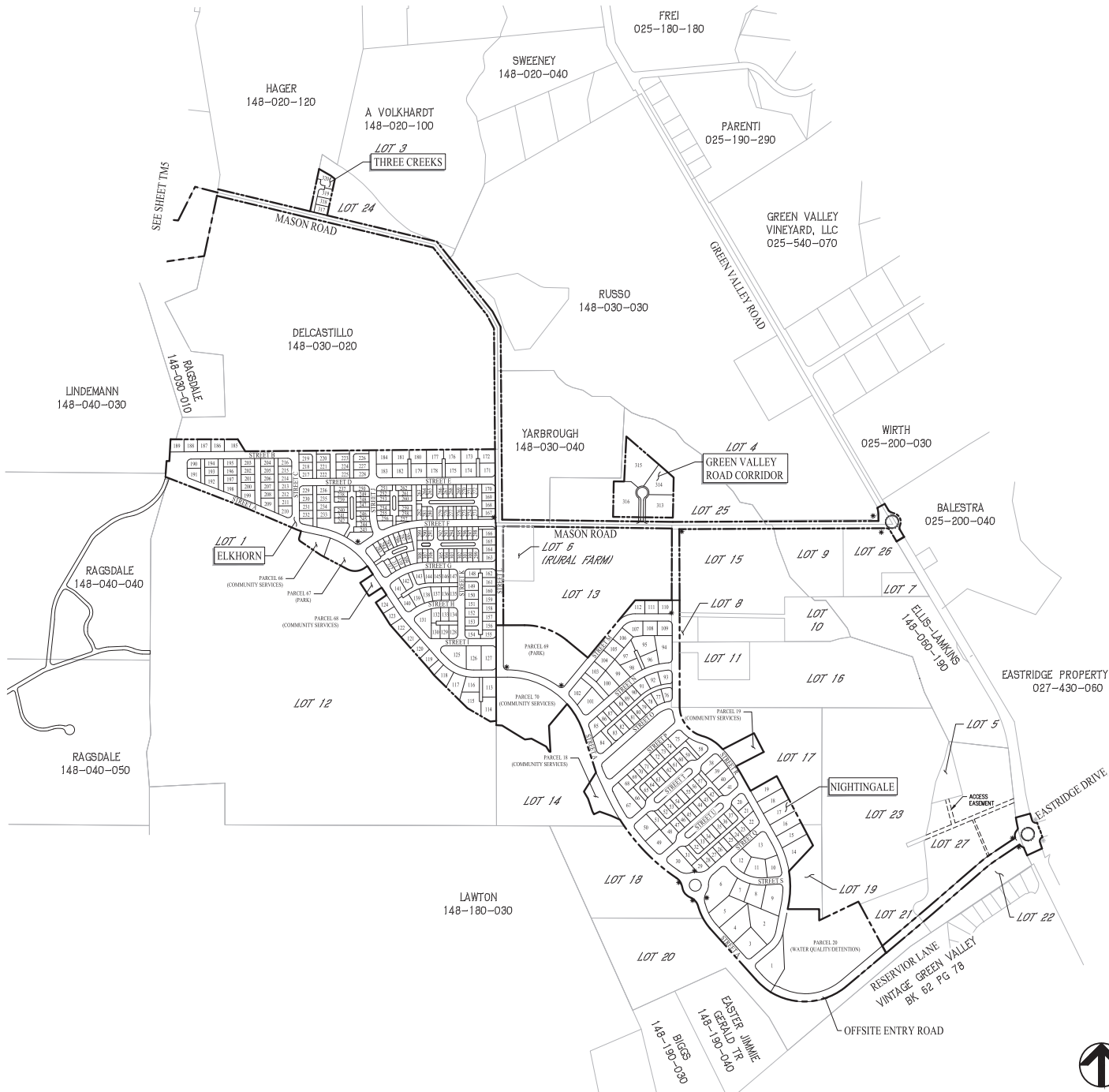
SOLANO COUNTY CALIFORNIA  
SCALE: 1" = 300' DATE: JULY 20, 2022



SAN RAMON • (925) 866-0322  
ROSEVILLE • (916) 798-4436  
WWW.BANDSD.COM

CIVIL ENGINEERS • SURVEYORS • PLANNERS

SHEET NO.  
**TM3**  
OF 27 SHEETS



PARCEL USE SUMMARY			
PARCEL / LOT	LAND USE	AREA (AC)	OWNER
LOTS 1-322			
	RESIDENTIAL	71.6	PRIVATE
PARCELS 2, 6, 10, 14, 17, 22-24, 26, 32, 36, 40, 46, 50, 55-58, 60, 61, 63, 65, 71			
	STREETS & ALLEYS	38.9	HDA
PARCELS 1, 3-5, 7-9, 11-13, 15, 16, 21, 25, 27-31, 33-37, 39, 41-45, 47-49, 51-54, 59, 62, 64			
	VILLAGE GREEN / OPEN SPACE	8.5	HDA
PARCELS 18, 19, 66, 68, 70			
	COMMUNITY SERVICES	7.1	PRIVATE
PARCELS 67, 69			
	PARK	5.6	HDA
PARCEL 20			
	WATER QUALITY / DETENTION	8.4	HDA

BUILDING TYPE SUMMARY				
NEIGHBORHOOD	COURTYARD	BUNGALOW	FARMSTEAD	TOTAL
ELKHORN	76	69	35	200
NIGHTINGALE	-	70	42	112
GREEN VALLEY ROAD CORRIDOR	-	-	4	4
THREE CREEKS	-	4	2	6
TOTALS	76	143	83	322

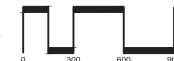
LEGEND

- PROJECT BOUNDARY
- NEIGHBORHOOD BOUNDARY
- LOT LINE
- RIGHT OF WAY
- PROPOSED EASEMENT
- EXISTING LOT LINE
- EXISTING RIGHT OF WAY
- LOT 9 DEFINED ON LARGE LOT TENTATIVE MAP
- STREET LIGHT (S)

(S) PROJECT STREET LIGHTS SHALL BE CONSISTENT WITH MITIGATION MEASURE 3-2, FIGURE 3-23 OF THE SPECIFIC PLAN AND ZONE LZ-1 OF THE MODEL LIGHTING ORDINANCE (201).

OVERALL SITE PLAN - EAST  
TENTATIVE MAP  
MIDDLE GREEN VALLEY

SOLANO COUNTY CALIFORNIA  
SCALE: 1" = 300' DATE: JULY 20, 2022

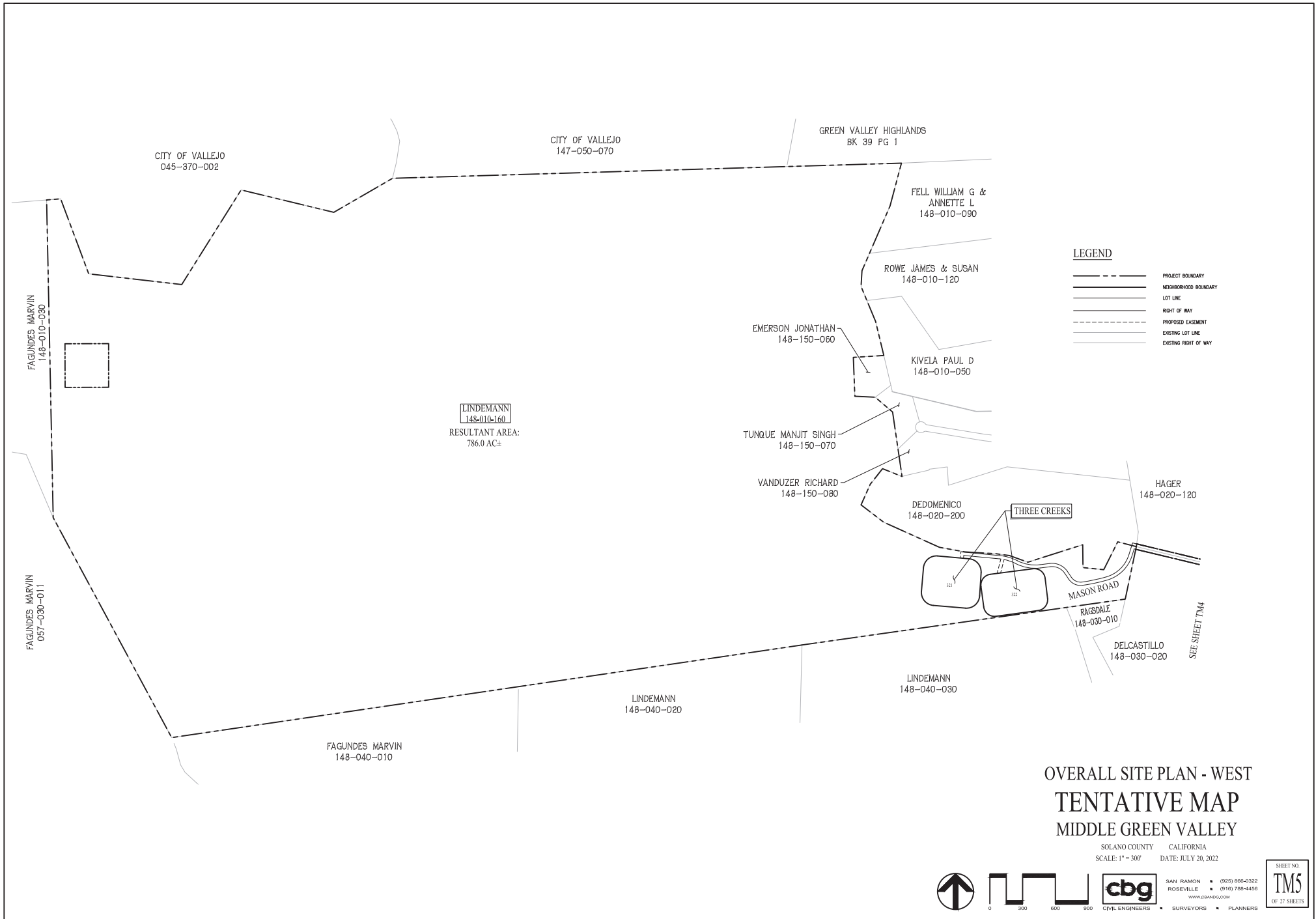


SAN RAMON (925) 866-0322  
ROSEVILLE (916) 788-4456  
WWW.CBMDGS.COM

CIVIL ENGINEERS SURVEYORS PLANNERS

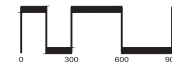
SHEET NO.  
**TM4**  
OF 27 SHEETS





OVERALL SITE PLAN - WEST  
TENTATIVE MAP  
MIDDLE GREEN VALLEY

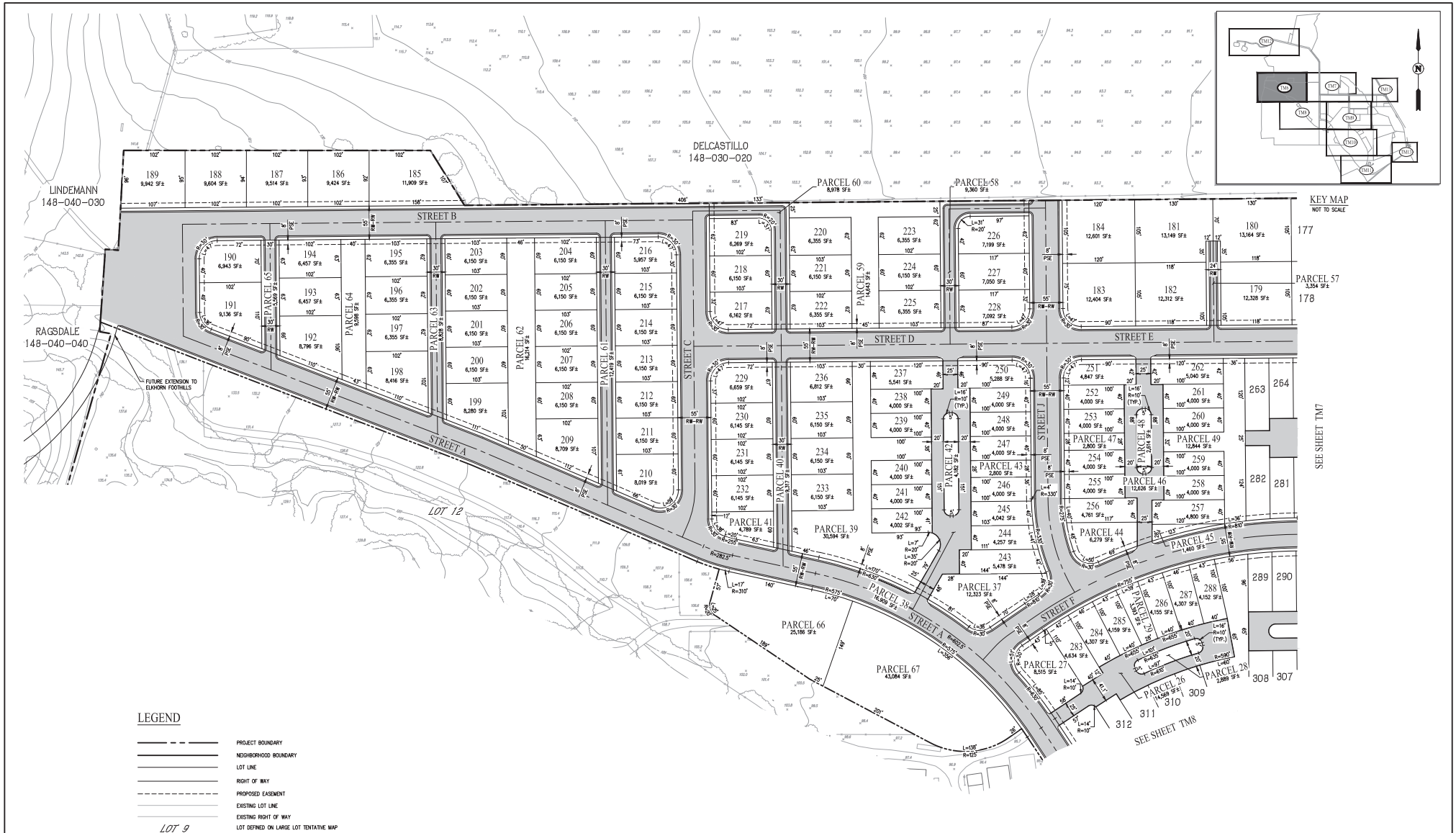
SOLANO COUNTY CALIFORNIA  
SCALE: 1" = 300' DATE: JULY 20, 2022



SAN RAMON (925) 866-0322  
ROSEVILLE (916) 788-4456  
WWW.CBMDGS.COM

CIVIL ENGINEERS SURVEYORS PLANNERS

SHEET NO.  
**TMS**  
OF 27 SHEETS



**DIMENSIONED SITE PLAN  
TENTATIVE MAP  
MIDDLE GREEN VALLEY**

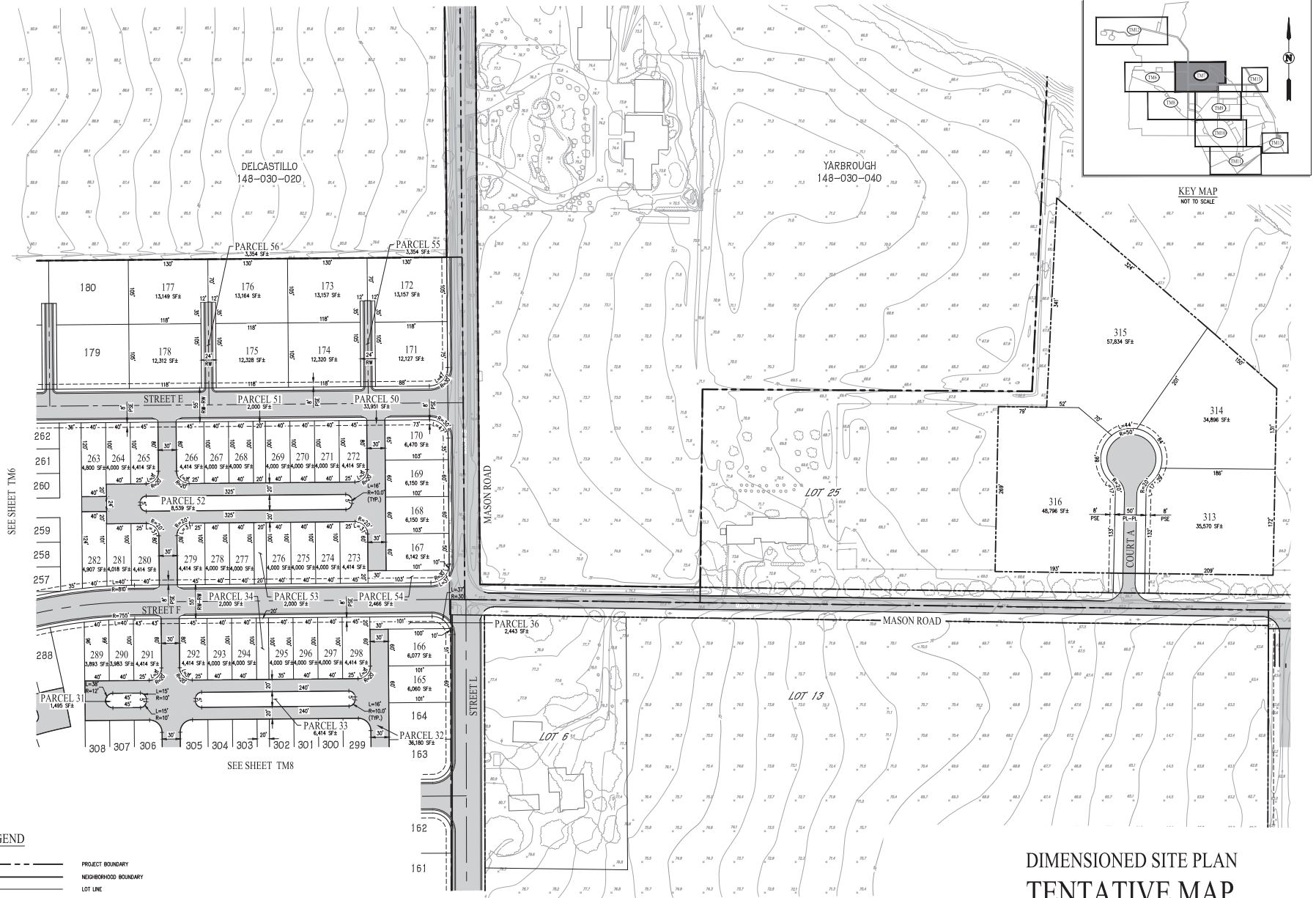
SOLANO COUNTY CALIFORNIA  
SCALE: 1" = 60' DATE: JULY 20, 2022

SAN RAMON • (925) 866-0322  
 ROSEVILLE • (916) 788-4156  
 WWW.CBGMDC.COM  
 CIVIL ENGINEERS • SURVEYORS • PLANNERS

SHEET NO.  
**TM6**  
OF 27 SHEETS

© 2022 CBGMDC/THM ENGINEERING SITE PLANNING





SEE SHEET TM6

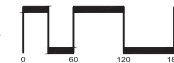
SEE SHEET TM8

**LEGEND**

- PROJECT BOUNDARY
  - NEIGHBORHOOD BOUNDARY
  - LOT LINE
  - RIGHT OF WAY
  - PROPOSED EASEMENT
  - EXISTING LOT LINE
  - EXISTING RIGHT OF WAY
  - LOT 9
- LOT 9  
LOT DEFINED ON LARGE LOT TENTATIVE MAP

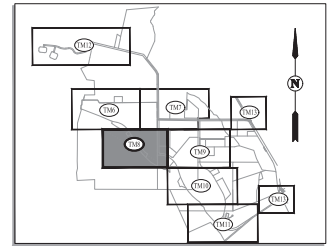
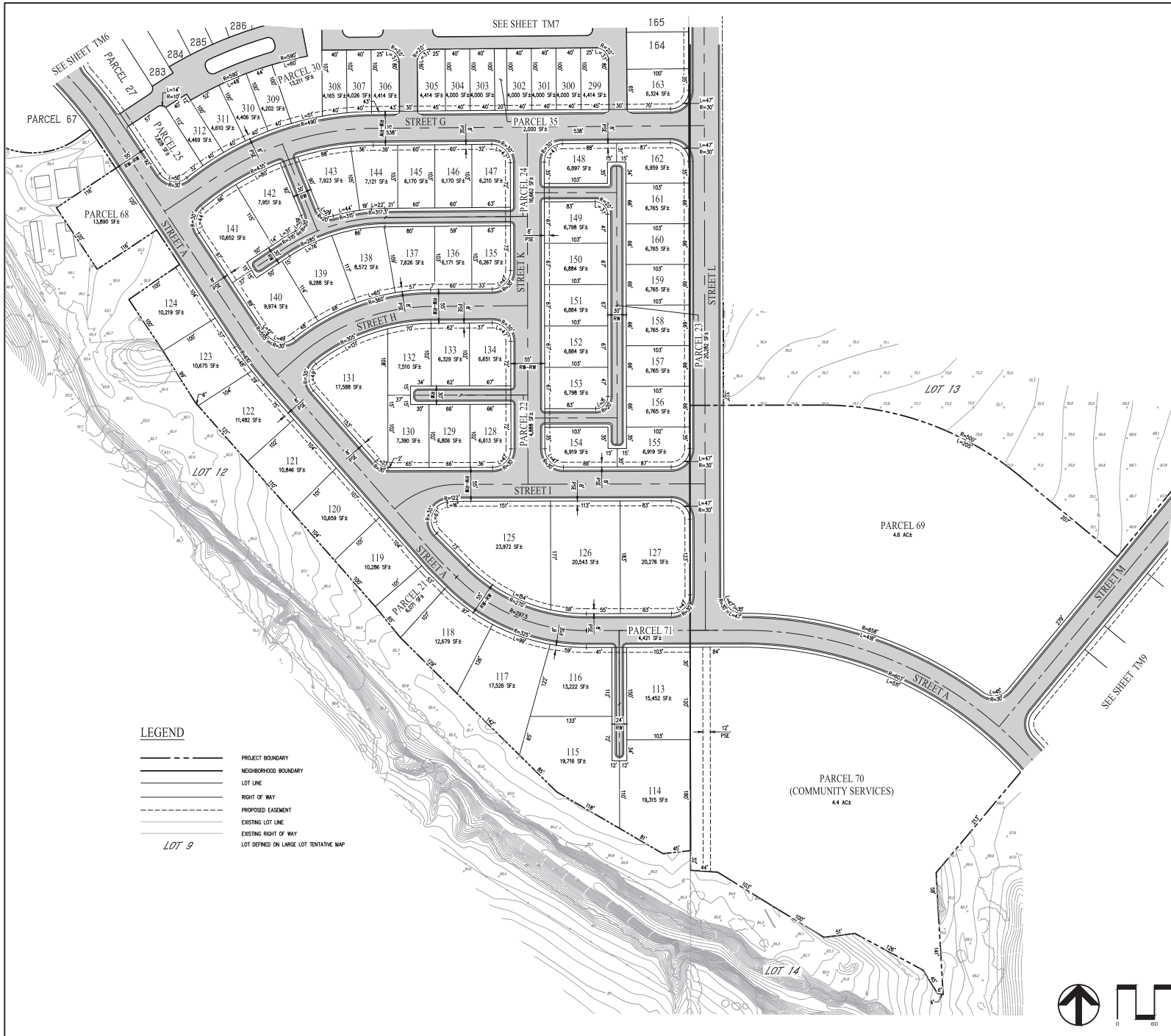
**DIMENSIONED SITE PLAN  
TENTATIVE MAP  
MIDDLE GREEN VALLEY**

SOLANO COUNTY CALIFORNIA  
SCALE: 1" = 60' DATE: JULY 20, 2022



SAN RAMON (925) 866-0322  
ROSEVILLE (916) 788-4456  
WWW.CBMDGS.COM

SHEET NO.  
**TM7**  
OF 27 SHEETS

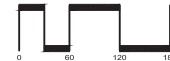


**LEGEND**

- PROJECT BOUNDARY
- NEIGHBORHOOD BOUNDARY
- LOT LINE
- RIGHT OF WAY
- - - PROPOSED EASEMENT
- EXISTING LOT LINE
- EXISTING RIGHT OF WAY
- LOT 9
- LOT DEFINED ON LARGE LOT TENTATIVE MAP

**DIMENSIONED SITE PLAN  
TENTATIVE MAP  
MIDDLE GREEN VALLEY**

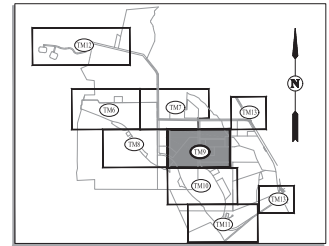
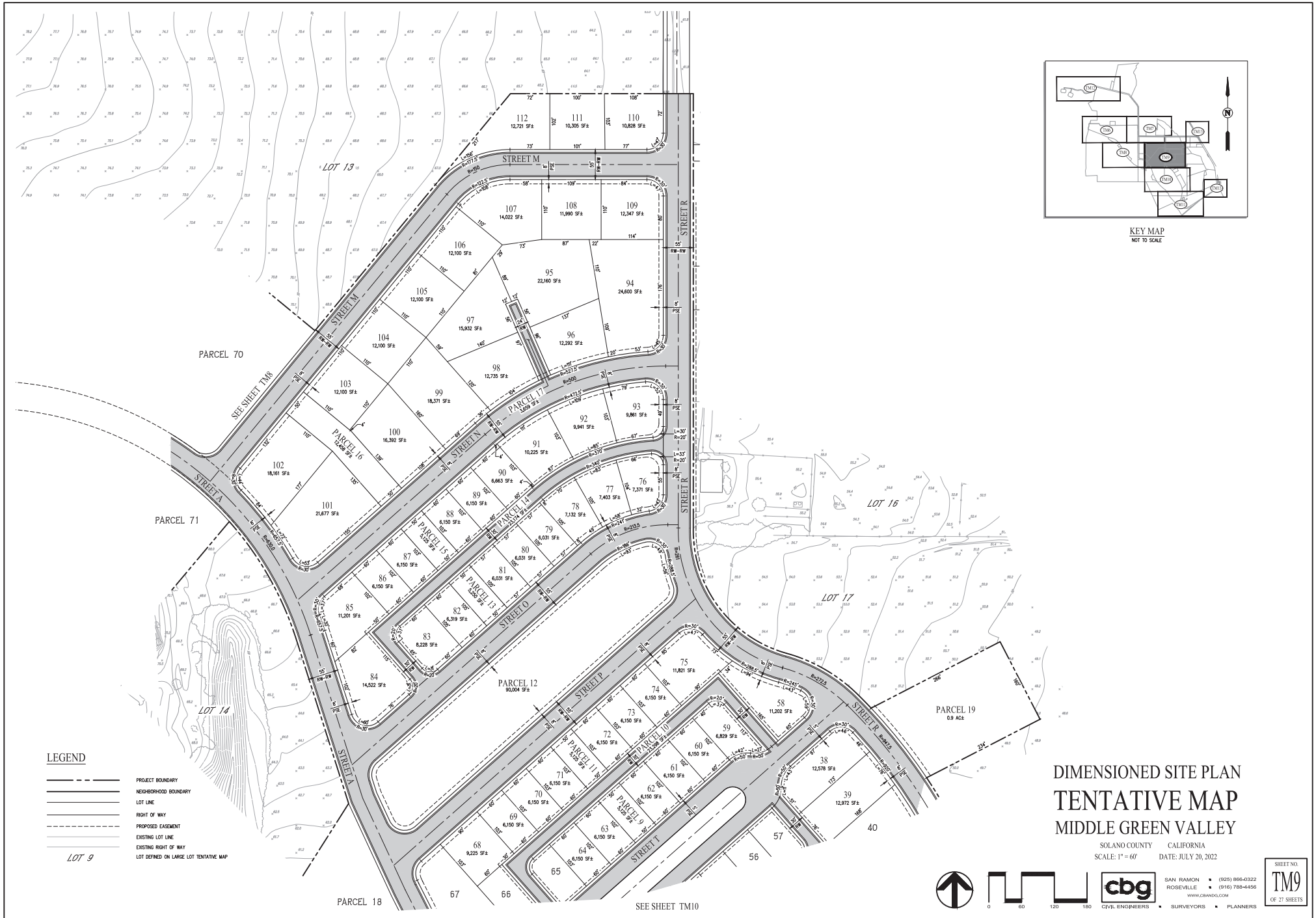
SOLANO COUNTY CALIFORNIA  
SCALE: 1" = 60' DATE: JULY 20, 2022



SAN RAMON • (925) 866-0322  
ROSEVILLE • (916) 788-4156  
WWW.CBMDGS.COM

• SURVEYORS • PLANNERS

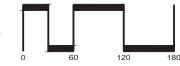
SHEET NO.  
**TM8**  
OF 27 SHEETS



KEY MAP  
NOT TO SCALE

**DIMENSIONED SITE PLAN  
TENTATIVE MAP  
MIDDLE GREEN VALLEY**

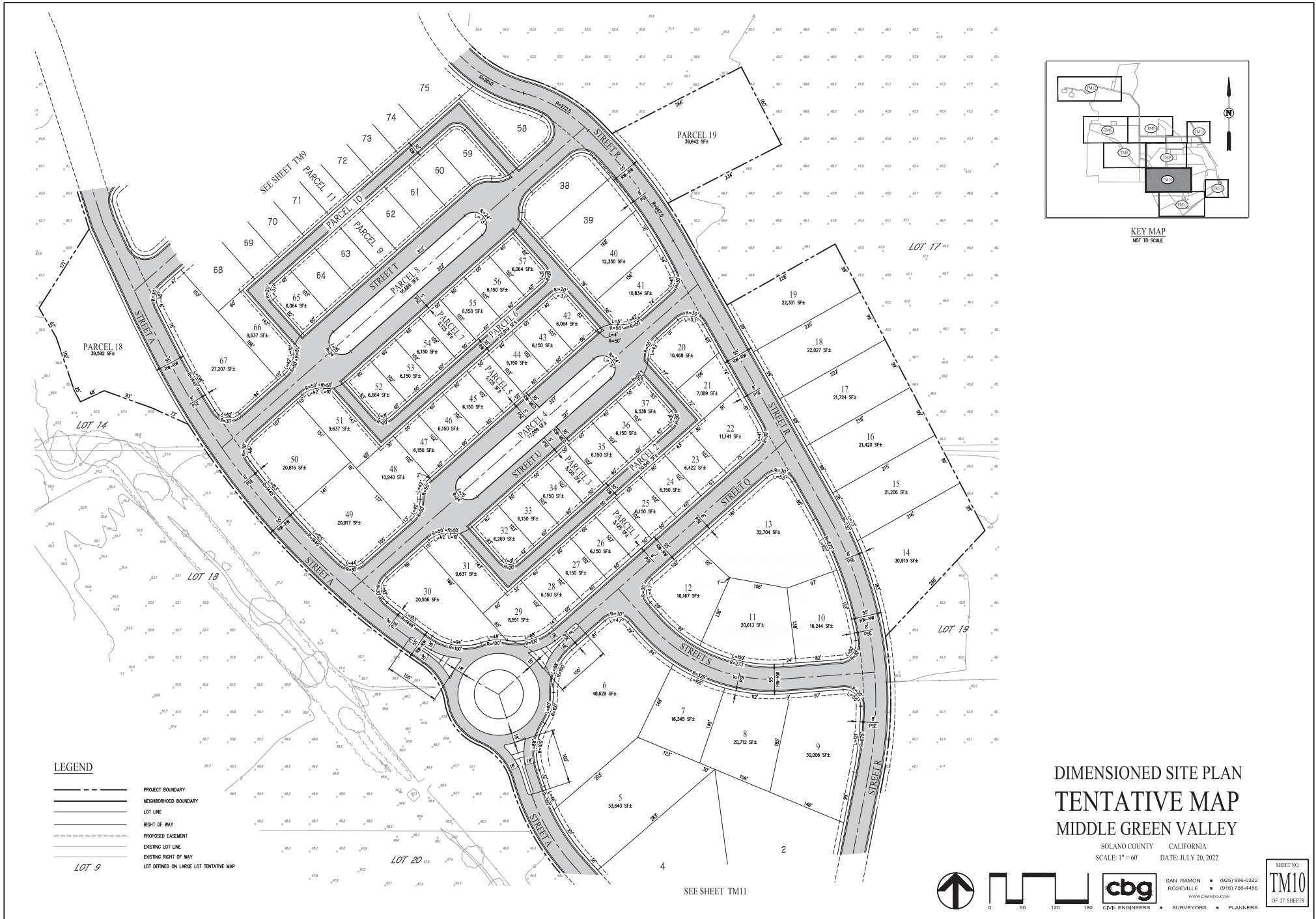
SOLANO COUNTY CALIFORNIA  
SCALE: 1" = 60' DATE: JULY 20, 2022



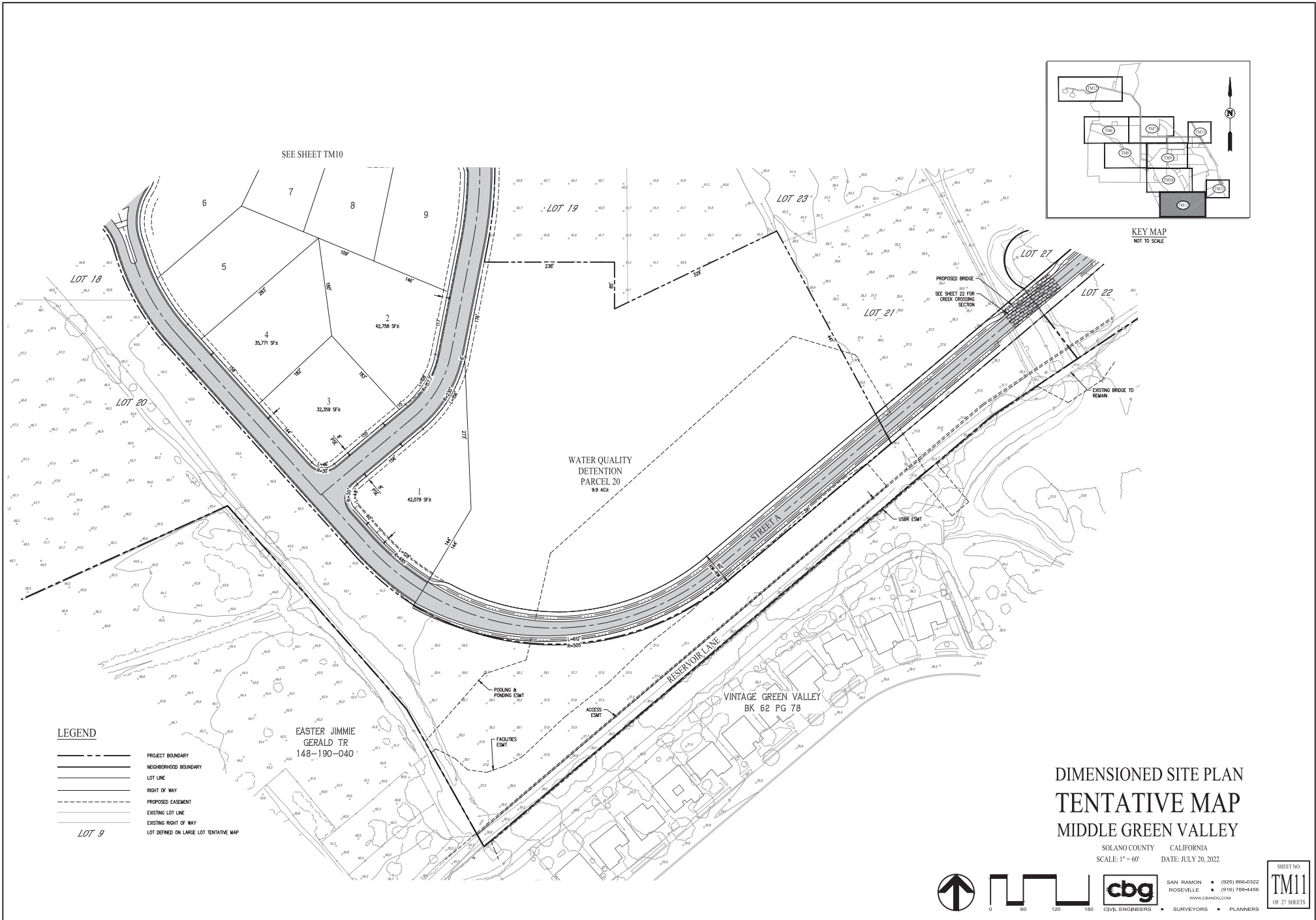
SAN RAMON (925) 866-0322  
ROSEVILLE (916) 788-4456  
WWW.CBANDGS.COM  
CIVIL ENGINEERS SURVEYORS PLANNERS

SHEET NO.  
**TM9**  
OF 27 SHEETS

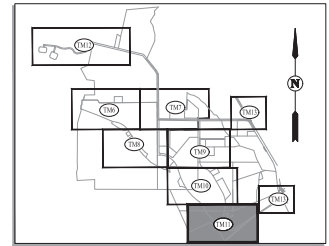








SEE SHEET TM10



KEY MAP  
NOT TO SCALE

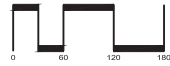
- LEGEND**
- PROJECT BOUNDARY
  - NEIGHBORHOOD BOUNDARY
  - LOT LINE
  - RIGHT OF WAY
  - PROPOSED EASEMENT
  - EXISTING LOT LINE
  - EXISTING RIGHT OF WAY
  - LOT 9
  - LOT DEFINED ON LARGE LOT TENTATIVE MAP

EASTER JIMMIE  
GERALD TR  
148-190-040

VINTAGE GREEN VALLEY  
BK 62 PG 78

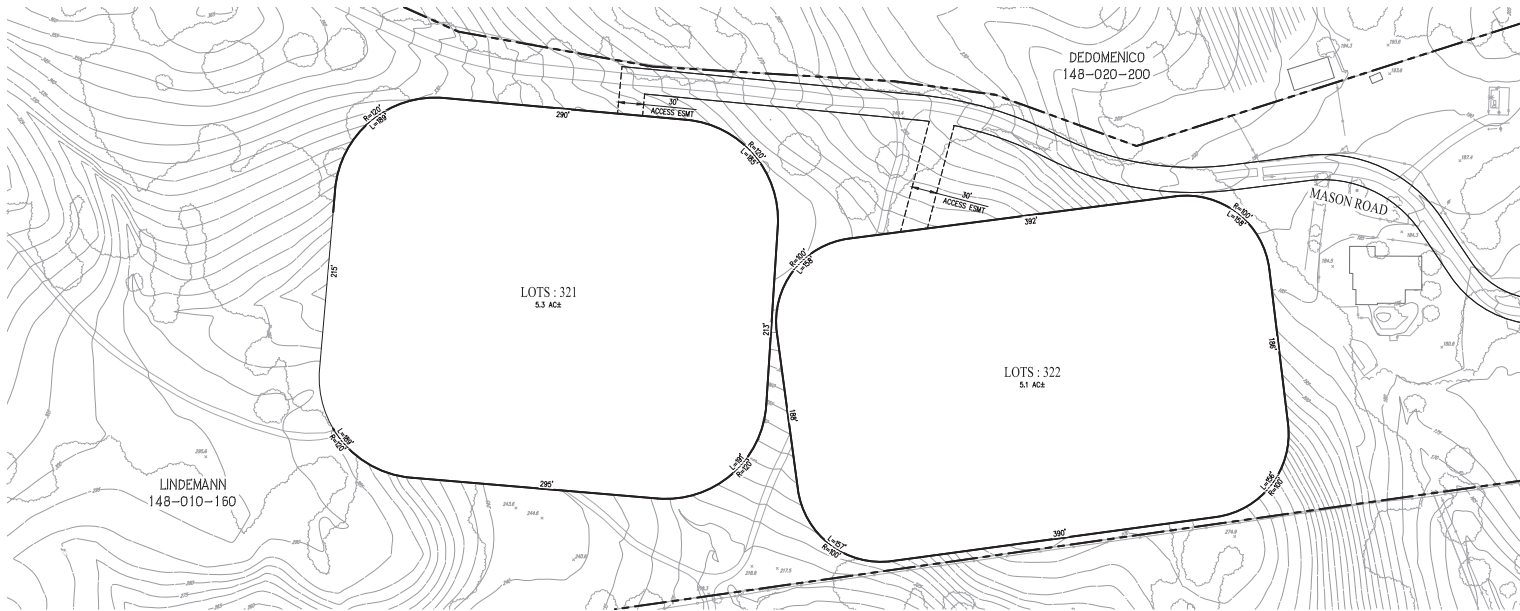
**DIMENSIONED SITE PLAN  
TENTATIVE MAP  
MIDDLE GREEN VALLEY**

SOLANO COUNTY CALIFORNIA  
SCALE: 1" = 60' DATE: JULY 20, 2022

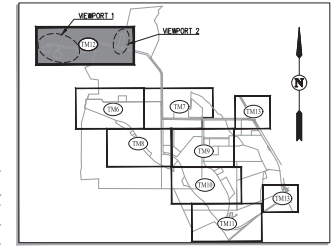


SAN RAMON (925) 866-0322  
ROSEVILLE (916) 788-4456  
WWW.CBGMDG.COM  
CIVIL ENGINEERS SURVEYORS PLANNERS

SHEET NO.  
**TM11**  
OF 27 SHEETS



VIEWPORT 1



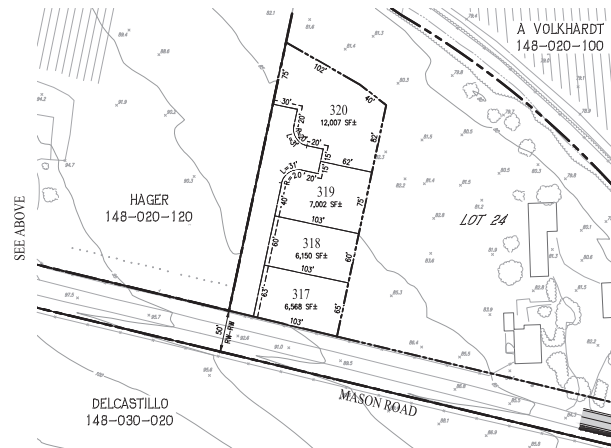
KEY MAP  
NOT TO SCALE

SEE BELOW

LEGEND

- PROJECT BOUNDARY
- NEIGHBORHOOD BOUNDARY
- LOT LINE
- RIGHT OF WAY
- PROPOSED EASEMENT
- EXISTING LOT LINE
- EXISTING RIGHT OF WAY
- LOT DEFINED ON LARGE LOT TENTATIVE MAP

LOT 9



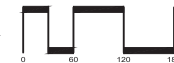
VIEWPORT 2

SEE ABOVE

SEE SHEET TM18

DIMENSIONED SITE PLAN  
TENTATIVE MAP  
MIDDLE GREEN VALLEY

SOLANO COUNTY CALIFORNIA  
SCALE: 1" = 60' DATE: JULY 20, 2022



SAN RAMON (925) 866-0322  
ROSEVILLE (916) 788-4456  
WWW.CBMDGS.COM

CIVIL ENGINEERS SURVEYORS PLANNERS

SHEET NO.  
**TM12**  
OF 27 SHEETS

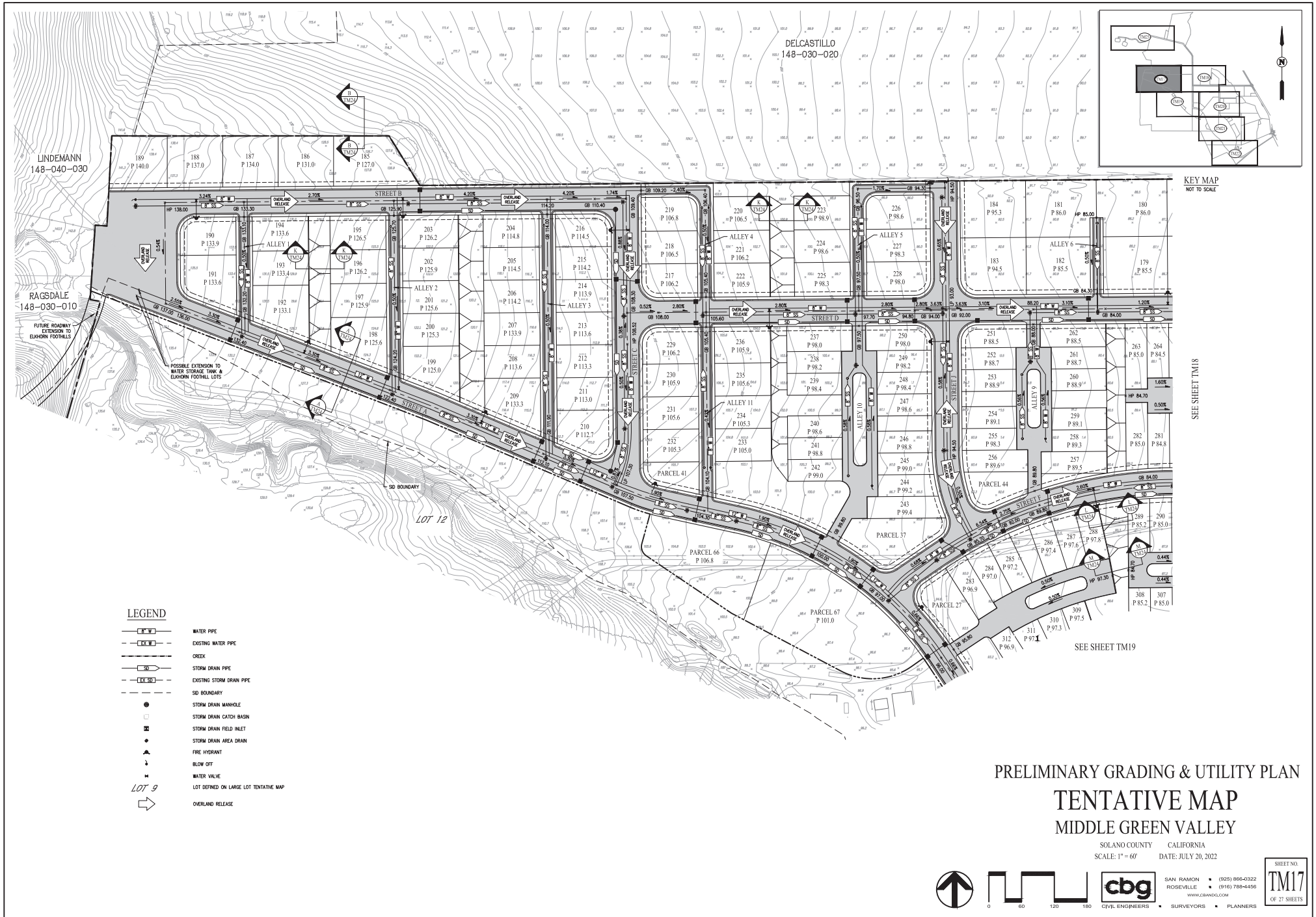












- LEGEND**
- WATER PIPE
  - EXISTING WATER PIPE
  - CREEK
  - STORM DRAIN PIPE
  - EXISTING STORM DRAIN PIPE
  - SD BOUNDARY
  - STORM DRAIN MANHOLE
  - STORM DRAIN CATCH BASIN
  - STORM DRAIN FIELD INLET
  - STORM DRAIN AREA DRAIN
  - FIRE HYDRANT
  - BLOW OFF
  - WATER VALVE
  - LOT 9
  - OVERLAND RELEASE

PRELIMINARY GRADING & UTILITY PLAN  
**TENTATIVE MAP**  
 MIDDLE GREEN VALLEY

SOLANO COUNTY CALIFORNIA  
 SCALE: 1" = 60' DATE: JULY 20, 2022

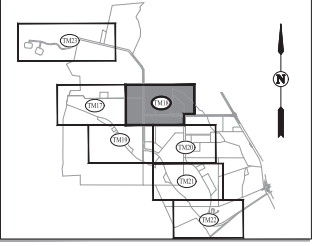
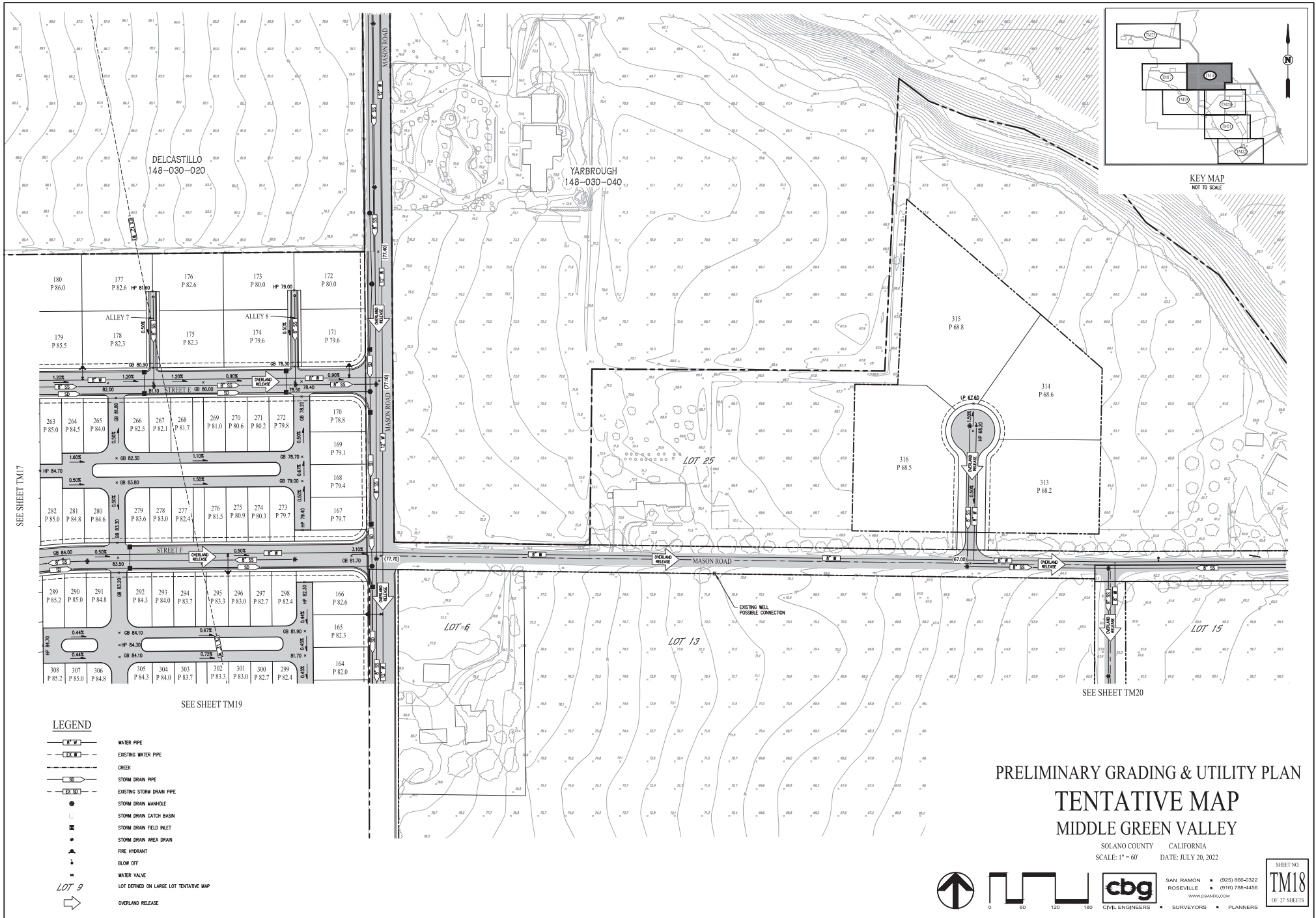
**cbg** CIVIL ENGINEERS • SURVEYORS • PLANNERS

SAN RAMON • (925) 866-0322  
 ROSEVILLE • (916) 788-4156  
 WWW.CBGINC.COM

SHEET NO. **TM17**  
 OF 27 SHEETS

0116423RAC017117 PRELIMINARY GRADING & UTILITY PLAN





KEY MAP  
NOT TO SCALE

SEE SHEET TM17

SEE SHEET TM19

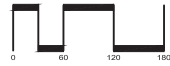
SEE SHEET TM20

**LEGEND**

- WATER PIPE
- EXISTING WATER PIPE
- CREEK
- STORM DRAIN PIPE
- EXISTING STORM DRAIN PIPE
- STORM DRAIN MANHOLE
- STORM DRAIN CATCH BASIN
- STORM DRAIN FIELD INLET
- STORM DRAIN AREA DRAIN
- FIRE HYDRANT
- BLOW OFF
- WATER VALVE
- LOT DEFINED ON LARGE LOT TENTATIVE MAP
- OVERLAND RELEASE

**PRELIMINARY GRADING & UTILITY PLAN**  
**TENTATIVE MAP**  
**MIDDLE GREEN VALLEY**

SOLANO COUNTY CALIFORNIA  
SCALE: 1" = 60' DATE: JULY 20, 2022

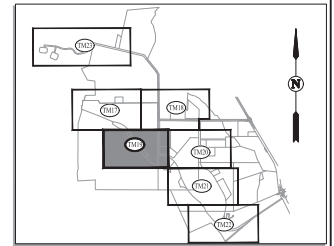


SAN RAMON (925) 866-0322  
ROSEVILLE (916) 788-4456  
WWW.CBG.COM  
SURVEYORS PLANNERS

SHEET NO.  
**TM18**  
OF 27 SHEETS

0146483202101 PRELIMINARY GRADING & UTILITY PLAN





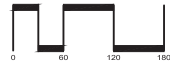
KEY MAP  
NOT TO SCALE



- LEGEND**
- WATER PIPE
  - EXISTING WATER PIPE
  - CREEK
  - STORM DRAIN PIPE
  - EXISTING STORM DRAIN PIPE
  - STORM DRAIN MANHOLE
  - STORM DRAIN CATCH BASIN
  - STORM DRAIN FIELD INLET
  - STORM DRAIN AREA DRAIN
  - FIRE HYDRANT
  - BLOW OFF
  - WATER VALVE
  - LOT DEFINED ON LARGE LOT TENTATIVE MAP
  - OVERLAND RELEASE

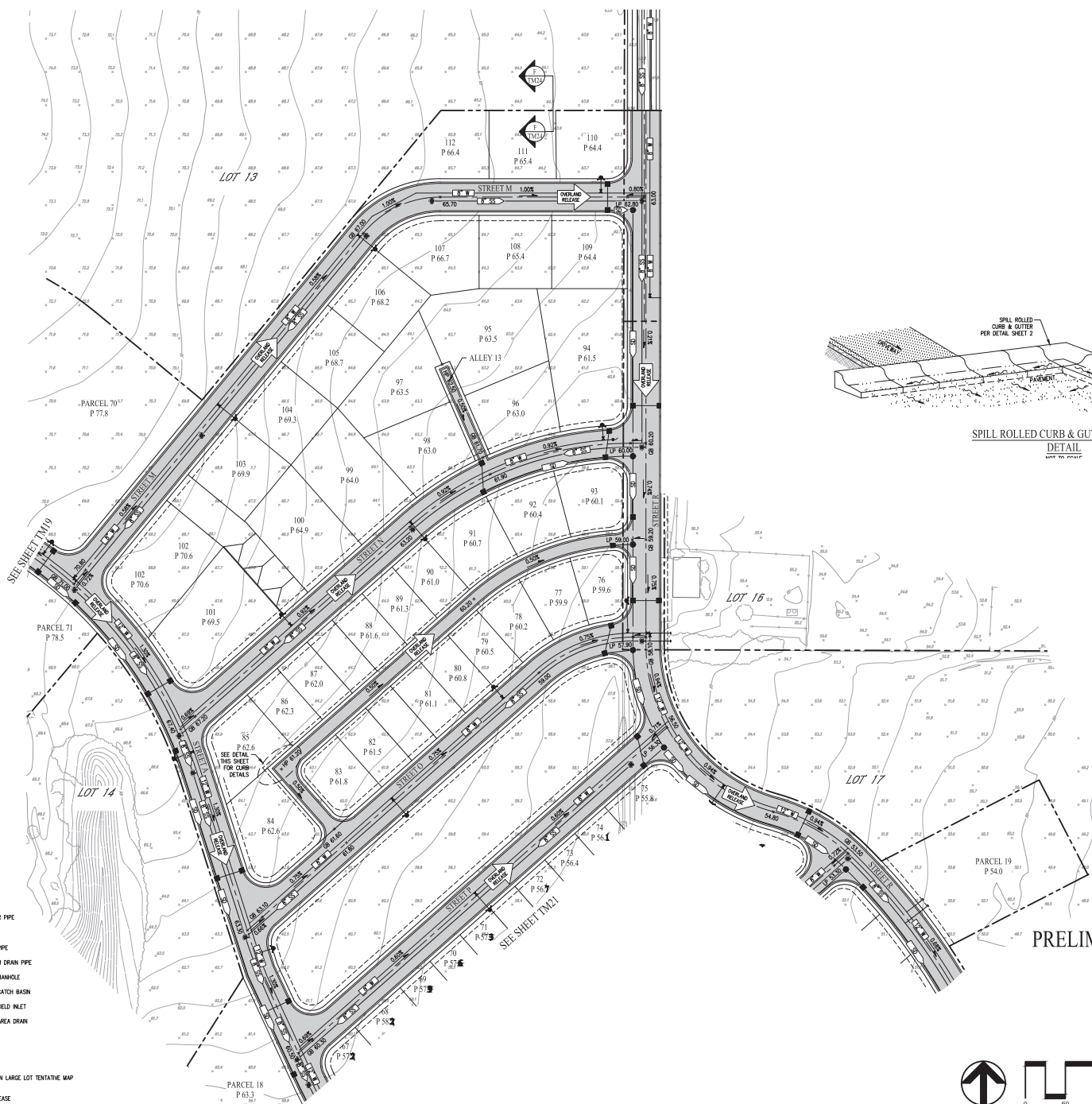
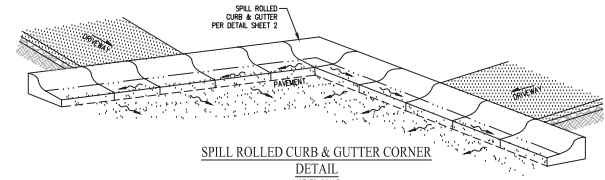
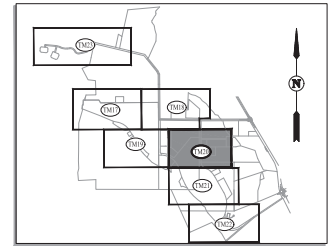
PRELIMINARY GRADING & UTILITY PLAN  
TENTATIVE MAP  
MIDDLE GREEN VALLEY

SOLANO COUNTY CALIFORNIA  
SCALE: 1" = 60' DATE: JULY 20, 2022



SAN RAMON • (925) 866-0322  
ROSEVILLE • (916) 788-4456  
WWW.CBGMDC.COM

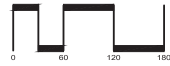
SHEET NO.  
**TM19**  
OF 27 SHEETS



- LEGEND**
- WATER PIPE
  - EXISTING WATER PIPE
  - CREEK
  - STORM DRAIN PIPE
  - EXISTING STORM DRAIN PIPE
  - STORM DRAIN MANHOLE
  - STORM DRAIN CATCH BASIN
  - STORM DRAIN FIELD INLET
  - STORM DRAIN AREA DRAIN
  - FIRE HYDRANT
  - BLOW OFF
  - WATER VALVE
  - LOT DEFINED ON LARGE LOT TENTATIVE MAP
  - OVERLAND RELEASE

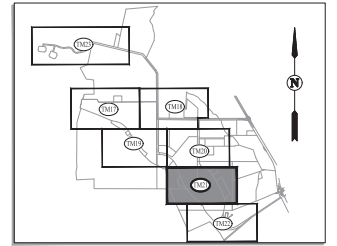
PRELIMINARY GRADING & UTILITY PLAN  
 TENTATIVE MAP  
 MIDDLE GREEN VALLEY

SOLANO COUNTY CALIFORNIA  
 SCALE: 1" = 60' DATE: JULY 20, 2022



SAN RAMON (925) 866-0322  
 ROSEVILLE (916) 788-4436  
 WWW.CBGMDC.COM  
 CIVIL ENGINEERS SURVEYORS PLANNERS

SHEET NO.  
**TM20**  
 OF 27 SHEETS



- LEGEND**
- WATER PIPE
  - EXISTING WATER PIPE
  - CREEK
  - STORM DRAIN PIPE
  - EXISTING STORM DRAIN PIPE
  - STORM DRAIN MANHOLE
  - STORM DRAIN CATCH BASIN
  - STORM DRAIN FIELD INLET
  - STORM DRAIN AREA DRAIN
  - FIRE HYDRANT
  - BLOW OFF
  - WATER VALVE
  - LOT DEFINED ON LARGE LOT TENTATIVE MAP
  - OVERLAND RELEASE

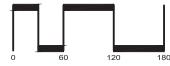
SEE SHEET TM22

LEMASTERS  
148-190-320

WATER  
QUALITY BASIN

PRELIMINARY GRADING & UTILITY PLAN  
TENTATIVE MAP  
MIDDLE GREEN VALLEY

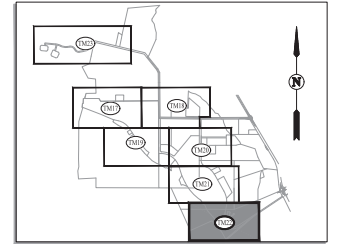
SOLANO COUNTY CALIFORNIA  
SCALE: 1" = 60' DATE: JULY 20, 2022



SAN RAMON (925) 866-0322  
ROSEVILLE (916) 788-4456  
WWW.CBMDC.COM

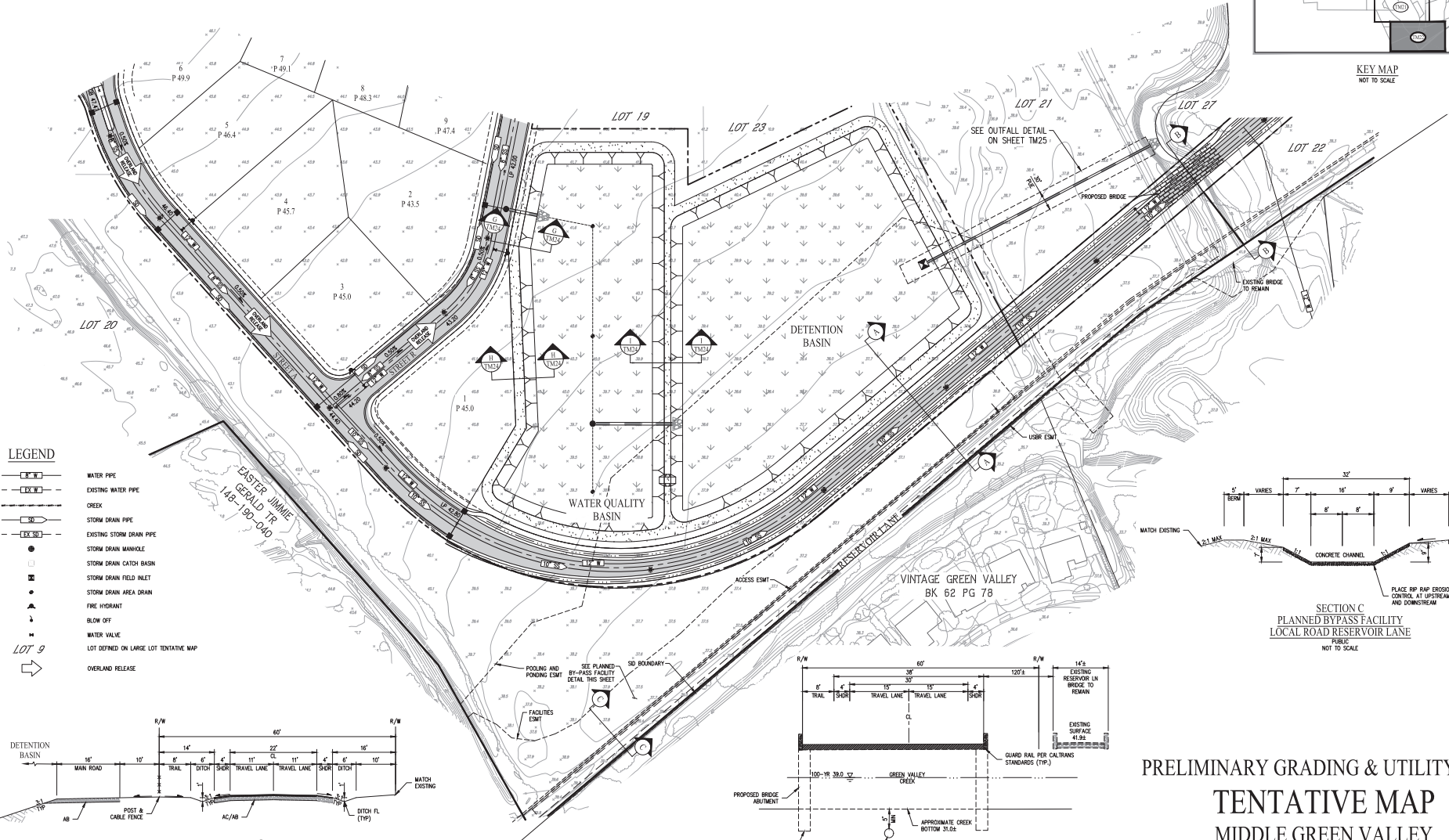
SHEET NO.  
**TM21**  
OF 27 SHEETS





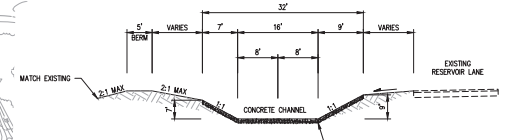
KEY MAP  
NOT TO SCALE

SEE SHEET TM21

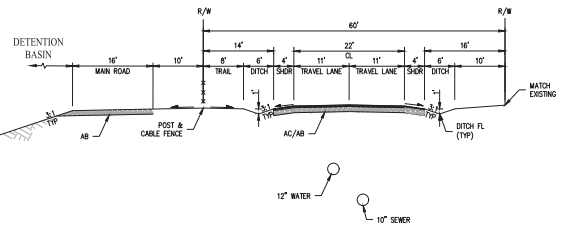


**LEGEND**

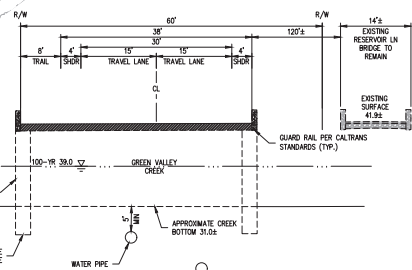
- WATER PIPE
- EXISTING WATER PIPE
- CREEK
- STORM DRAIN PIPE
- EXISTING STORM DRAIN PIPE
- STORM DRAIN MANHOLE
- STORM DRAIN CATCH BASIN
- STORM DRAIN FIELD INLET
- STORM DRAIN AREA DRAIN
- FIRE HYDRANT
- BLOW OFF
- WATER VALVE
- LOT 9
- OVERLAND RELEASE



SECTION C  
PLANNED BYPASS FACILITY  
LOCAL ROAD RESERVOIR LANE  
NOT TO SCALE



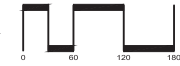
**DETENTION BASIN**



SECTION B  
LOCAL ROAD STATION 25+91.03 - GREEN VALLEY  
CREEK CROSSING  
NOT TO SCALE

**PRELIMINARY GRADING & UTILITY PLAN  
TENTATIVE MAP  
MIDDLE GREEN VALLEY**

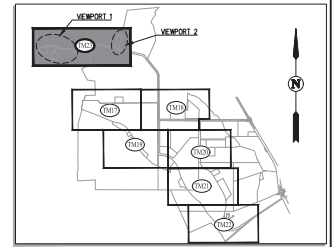
SOLANO COUNTY CALIFORNIA  
SCALE: 1" = 60' DATE: JULY 20, 2022



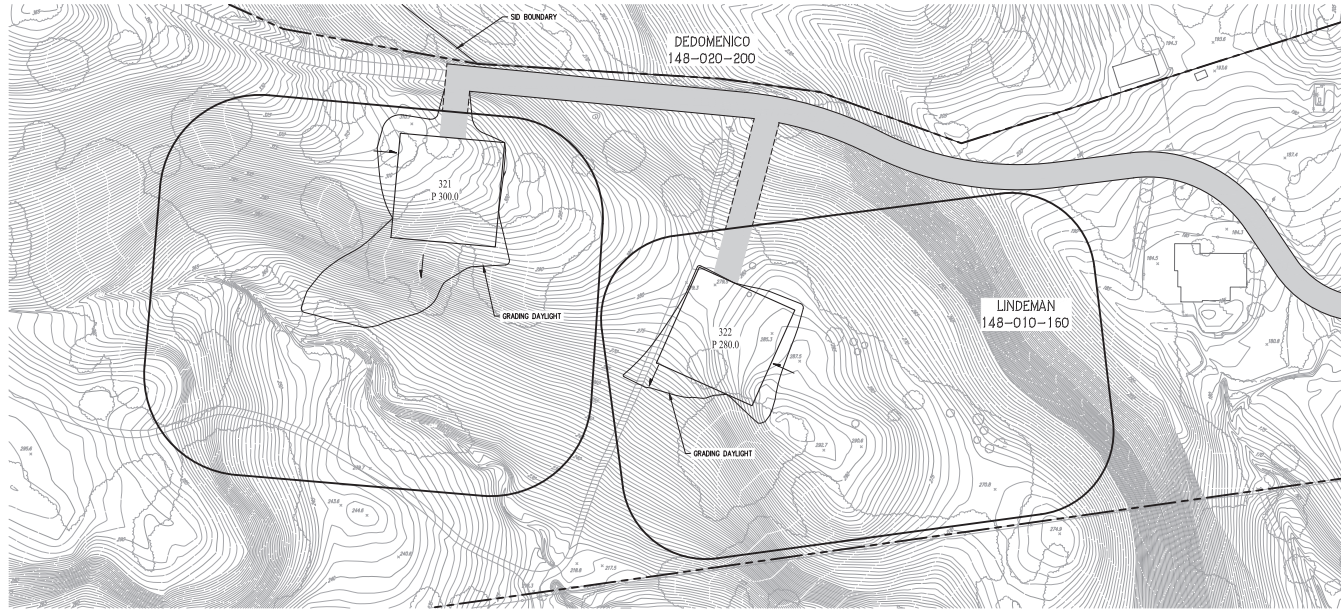
SAN RAMON (925) 866-0322  
ROSEVILLE (916) 788-4166  
WWW.CBMDGS.COM  
SURVEYORS PLANNERS

SHEET NO.  
**TM22**  
OF 27 SHEETS



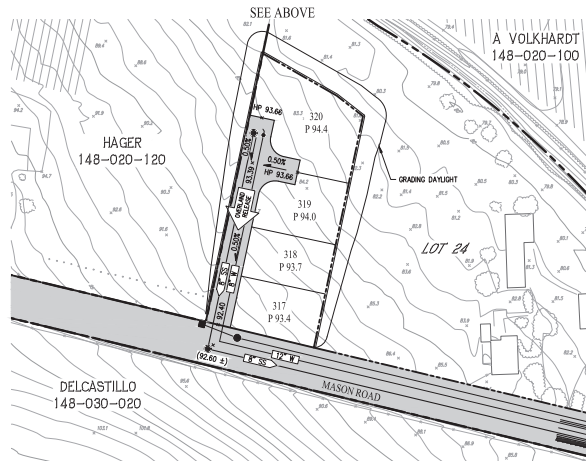


KEY MAP  
NOT TO SCALE



VIEWPORT 1

SEE BELOW



VIEWPORT 2

SEE SHEET TM18

EARTHWORK SUMMARY			
DESCRIPTION	RAW CUT (CY)	RAW FILL (CY)	RAW NET (CY)
LOT 321	605	2,000	1,395 IMPORT
LOT 322	1,186	631	555 EXPORT
LOTS 317-320	0	2,260	2,260 IMPORT
TOTAL	1,791	4,891	3,100 IMPORT

LEGEND

- WATER PIPE
- EXISTING WATER PIPE
- CREEK
- STORM DRAIN PIPE
- EXISTING STORM DRAIN PIPE
- STORM DRAIN MANHOLE
- STORM DRAIN CATCH BASIN
- STORM DRAIN FIELD INLET
- STORM DRAIN AREA DRAIN
- FIRE HYDRANT
- BLOW OFF
- WATER VALVE
- LOT 9
- OVERLAND RELEASE

PRELIMINARY GRADING & UTILITY PLAN  
TENTATIVE MAP  
MIDDLE GREEN VALLEY

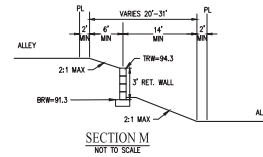
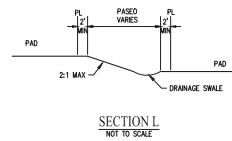
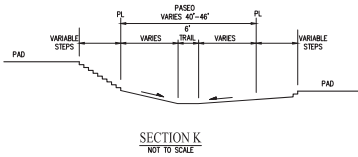
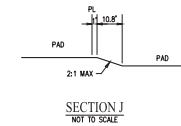
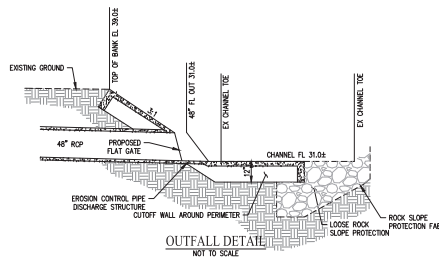
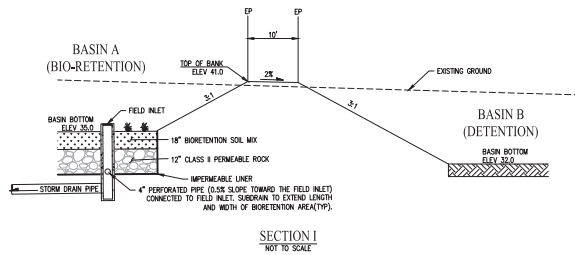
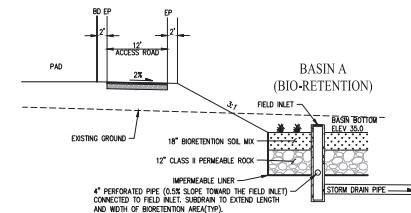
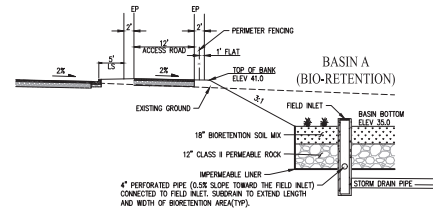
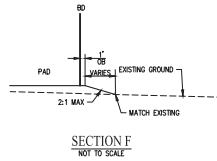
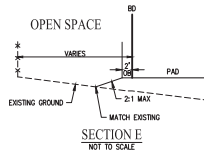
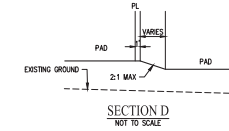
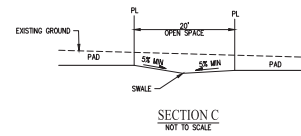
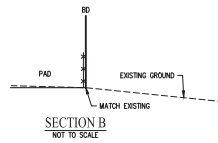
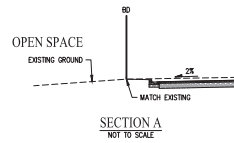
SOLANO COUNTY CALIFORNIA  
SCALE: 1" = 60' DATE: JULY 20, 2022



SAN RAMON (925) 866-0322  
ROSEVILLE (916) 788-4456  
WWW.CBMDGS.COM

CIVIL ENGINEERS SURVEYORS PLANNERS

SHEET NO.  
**TM23**  
OF 27 SHEETS



GRADING SECTIONS & DETAILS  
TENTATIVE MAP  
MIDDLE GREEN VALLEY

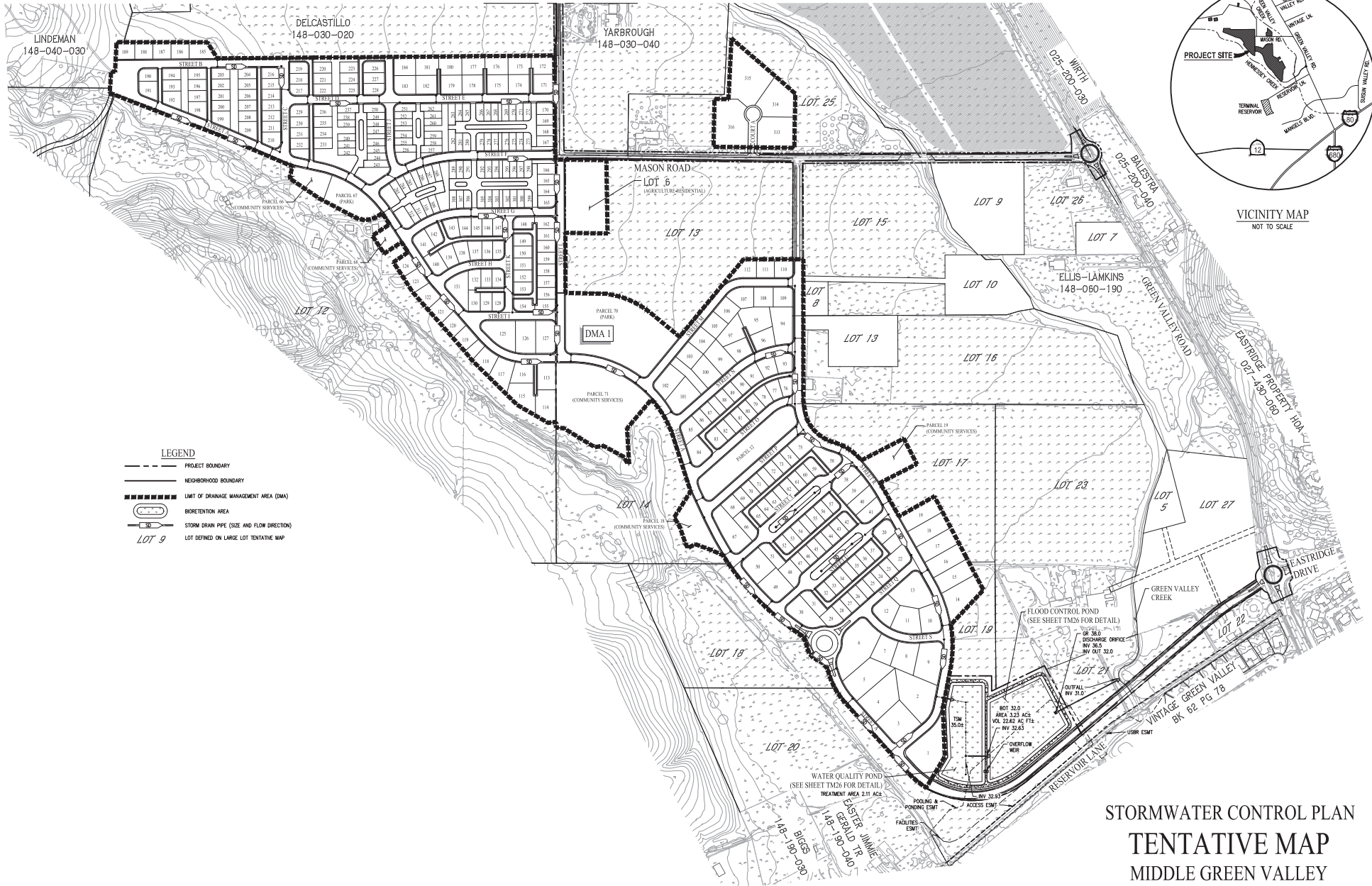
SOLANO COUNTY CALIFORNIA  
SCALE: 1" = NTS DATE: JULY 20, 2022



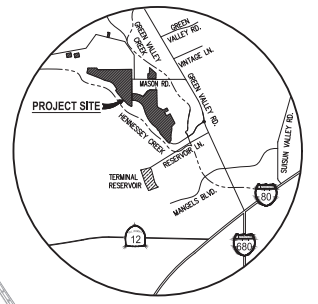
SAN RAMON (925) 866-0322  
ROSEVILLE (916) 788-4456  
WWW.CBMDGS.COM  
CIVIL ENGINEERS SURVEYORS PLANNERS

SHEET NO.  
TM24  
OF 27 SHEETS

(SEE SHEET TM26)  
MATCH LINE



- LEGEND**
- PROJECT BOUNDARY
  - - - NEIGHBORHOOD BOUNDARY
  - ==== LIMIT OF DRAINAGE MANAGEMENT AREA (DMA)
  - BIORETENTION AREA
  - STORM DRAIN PIPE (SIZE AND FLOW DIRECTION)
  - LOT 9 LOT DEFINED ON LARGE LOT TENTATIVE MAP



VICINITY MAP  
NOT TO SCALE

**STORMWATER CONTROL PLAN  
TENTATIVE MAP  
MIDDLE GREEN VALLEY**

SOLANO COUNTY CALIFORNIA  
SCALE: 1" = 200' DATE: JULY 20, 2022

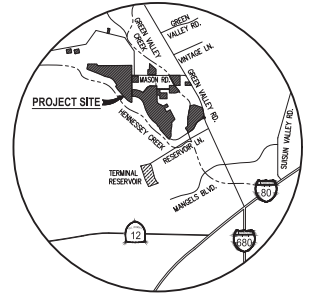



 SAN RAMON (925) 866-0322  
 ROSEVILLE (916) 788-4456  
 WWW.CBGMDC.COM  
 CIVIL ENGINEERS SURVEYORS PLANNERS

SHEET NO.  
**TM25**  
OF 27 SHEETS

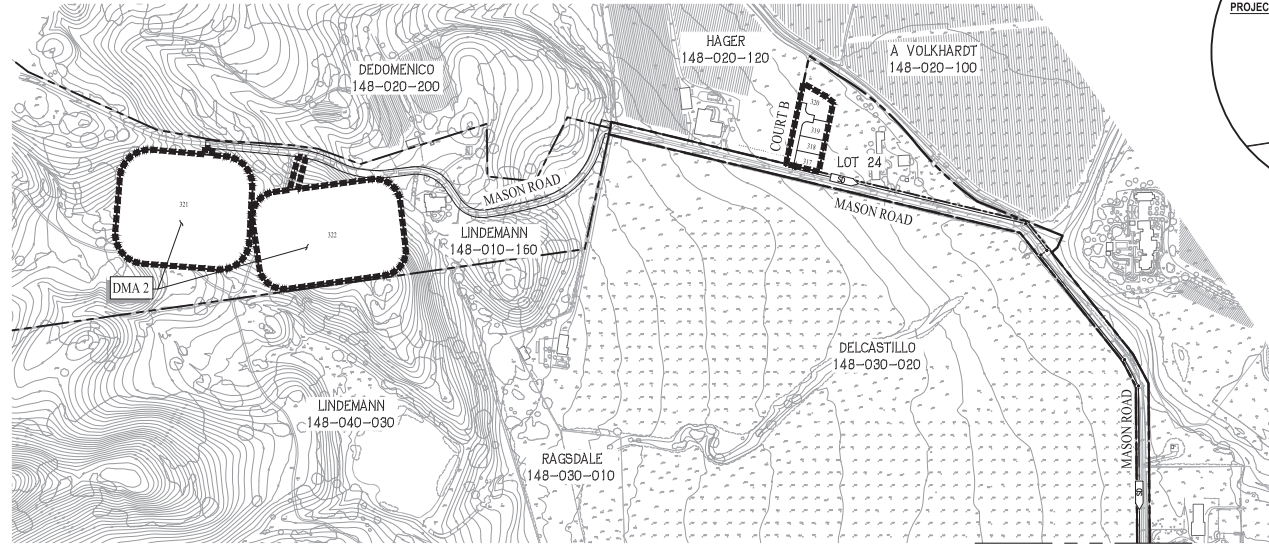
© 2022 CBGMDC/MTRCS STORMWATER CONTROL PLAN





VICINITY MAP  
NOT TO SCALE

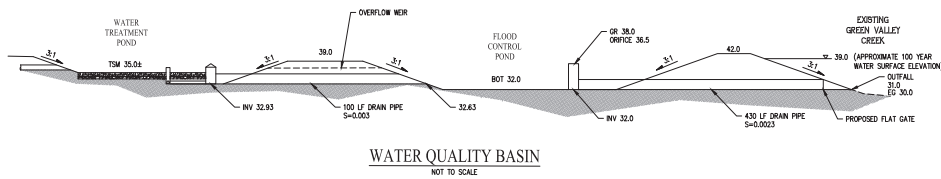
- LEGEND**
- PROJECT BOUNDARY
  - NEIGHBORHOOD BOUNDARY
  - LIMIT OF DRAINAGE MANAGEMENT AREA (DMA)
  - STORM DRAIN PIPE (SIZE AND FLOW DIRECTION)



MATCHLINE  
(SEE SHEET TM25)

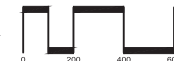
DRAINAGE MANAGEMENT AREA SUMMARY								
DMA	DMA AREA (SF)	PERVIOUS AREA (SF)	IMPERVIOUS AREA (SF)	EFFECTIVE IMPERVIOUS AREA (SF)	REQUIRED TREATMENT AREA (SF)	PROVIDED TREATMENT AREA (SF)	PONDING DEPTH (IN)	TREATMENT TYPE
1	5,758,059	3,889,059	1,870,000	2,258,906	90,356	91,887	6	BIORETENTION
2	86,292	25,888	60,404	-	-	-	-	SELF TREATING

NOTES:  
1. PER BALANCE HYDROLOGY LLC. DATED 10/12/2021.



STORMWATER CONTROL PLAN  
TENTATIVE MAP  
MIDDLE GREEN VALLEY

SOLANO COUNTY CALIFORNIA  
SCALE: 1" = 200' DATE: JULY 20, 2022

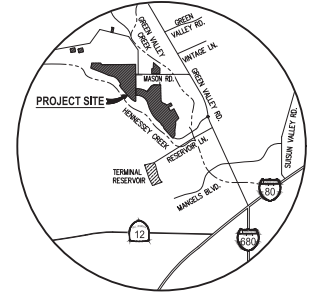


SAN RAMON (925) 866-0322  
ROSEVILLE (916) 788-4456  
WWW.CBMDGS.COM

CIVIL ENGINEERS SURVEYORS PLANNERS

SHEET NO.  
**TM26**  
OF 27 SHEETS

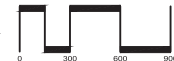




VICINITY MAP  
NOT TO SCALE

CONTEXTUAL MAP  
TENTATIVE MAP  
MIDDLE GREEN VALLEY

SOLANO COUNTY CALIFORNIA  
SCALE: 1" = 300' DATE: JULY 20, 2022



SAN RAMON (925) 866-0322  
ROSEVILLE (916) 788-4456  
WWW.CBMDGS.COM  
CIVIL ENGINEERS SURVEYORS PLANNERS

SHEET NO.  
**TM27**  
OF 27 SHEETS