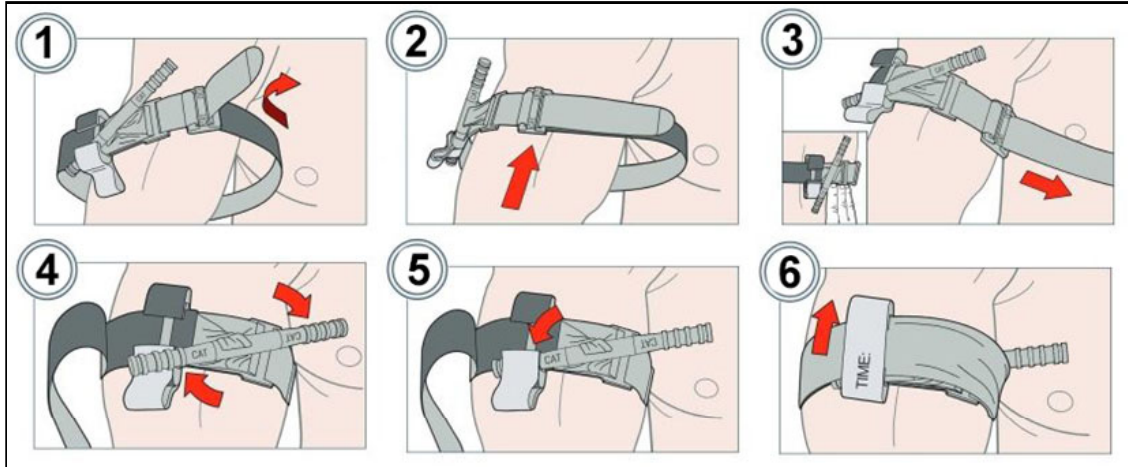


## Special Procedures S-03 Tourniquet



### Tourniquet Use

#### INDICATIONS:

- Extremity bleeding that can not be controlled by other means
- Amputation, regardless if active bleeding is present
- Extremity bleeding control option in complicated situations such as: difficult to access patients, MCI, and other dangerous situations for providers
- Significant extremity bleeding with any of the following: multiple extremities bleeding, need for airway management, or need for other emergent interventions

#### PROCEDURE:

1. **Route constricting band** around the injured limb and pass the tip through the slit of the buckle, or insert injured limb through loop in constricting band.
2. **Position at least 2-3" above bleeding site**, DO NOT place directly over a joint.
3. **Pull band tightly and fasten** it back on itself all the way around the limb. If the tips of three (3) fingers slide under band, retighten and re-secure.
4. **Twist the rod until bleeding has stopped and no distal pulse is detected.**
5. **Secure the rod inside clip to lock in place.** If bleeding continues, or pulse is detected again, consider applying a second tourniquet above and next to the first.
6. **Route the band between the clip and over rod**, secure rod and band with strap.
7. **Record time of application** and communicate that time to the receiving facility.
8. **Reassess bleeding site and dress wound with pressure bandage**, or utilize wound packing with standard or hemostatic gauze then bandage wound.

***The Committee for Tactical Combat Casualty Care (CoTCCC) list of approved tourniquets are approved for California EMS personnel use.***

