

If you have any questions, or if you think you need to obtain approval for a particular waste discharge, please call your local wastewater treatment plant or stormwater management agency listed below:

ALAMEDA COUNTY

Stormwater
Alameda Countywide
Clean Water Program
(510) 670-5543

Wastewater Treatment

City of Hayward
(510) 881-7900
City of Livermore
(510) 373-5230
City of San Leandro
(510) 577-3401
Dublin San Ramon Services District
(925) 846-0568
East Bay Municipal Utility District
(510) 287-1651
Oro Loma Sanitary District
(510) 276-4700
Union Sanitary District
(510) 477-7500

NAPA COUNTY

Wastewater Treatment
City of Calistoga
(707) 942-2837
City of St. Helena
(707) 967-2878
Napa Sanitation District
(707) 258-6000
Town of Yountville
(707) 944-2988

SAN FRANCISCO COUNTY

Stormwater
Department of Public Works, BERM
(415) 695-7310

Wastewater Treatment

Department of Public Works, BERM
(415) 695-7310

SAN MATEO COUNTY

Stormwater
San Mateo Countywide
Stormwater Pollution
Prevention Program
(415) 363-4708

Wastewater Treatment

City of Burlingame
(650) 342-3727
City of Millbrae
(650) 259-2388

City of Pacifica
(650) 738-4660
City of San Mateo
(650) 522-7340
Cities of South San Francisco-
San Bruno
(650) 877-8555
North San Mateo County
Sanitation District
(650) 991-8200
Sewer Authority Mid-Coastside
(650) 726-0124
South Bayside System
Authority
(650) 594-8411, ext. 141

SOLANO COUNTY

Stormwater
Fairfield-Suisun Urban Runoff
Management Program
(707) 429-8930
Vallejo Sanitation and Flood
Control District
(707) 644-8949

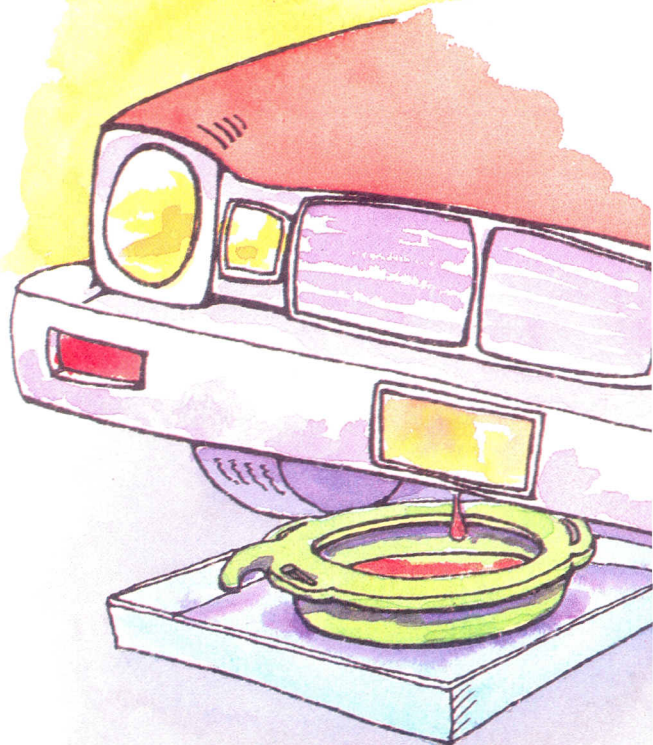
Wastewater Treatment

City of Benicia
(707) 746-4336
Fairfield-Suisun Sewer District
(707) 429-8930
City of Vacaville
(707) 469-6400
Vallejo Sanitation and
Flood Control District
(707) 644-8949

SONOMA COUNTY

Wastewater Treatment
City of Petaluma
(707) 762-5892
Sonoma County Water Agency
(707) 526-5370
Sub Regional Reclamation Facility
(707) 543-3369

Changing Oil and Other Fluids



Vehicle Shop Practices for a Cleaner Bay

PRODUCED AND DISTRIBUTED BY BAY AREA
WASTEWATER TREATMENT PLANTS AND
STORMWATER MANAGEMENT AGENCIES

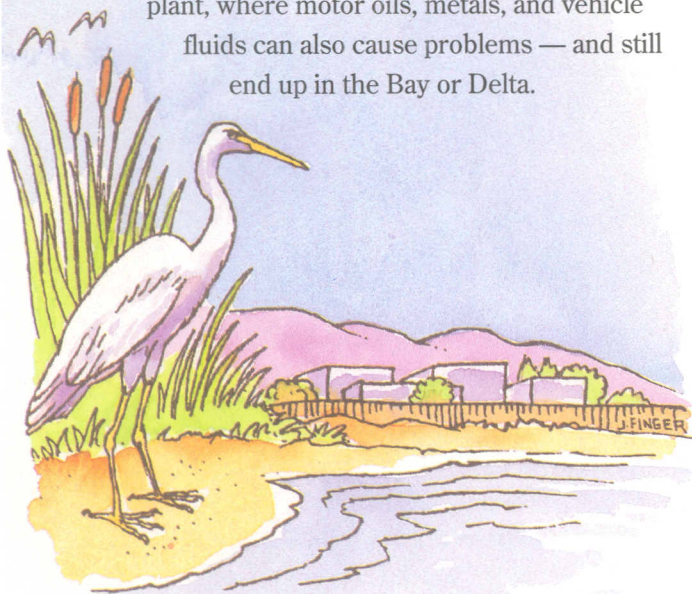
FUNDED IN PART BY THE
CALIFORNIA INTEGRATED WASTE MANAGEMENT BOARD

Vehicle Service Shops Can Make a Difference.

Vehicle service employees can help protect water quality in important ways by following the guidelines for shop practices and maintenance in this brochure. We hope you will join with us and businesses throughout the Bay Area as we work together to safeguard the health of the Bay.

Outside your shop, storm drains carry runoff from streets, gutters, and parking lots directly to local creeks and the San Francisco Bay and Delta with no waste treatment. When oils, dissolved metals, and other vehicle fluids reach a creek or the Bay they threaten water quality and the health of wildlife in our waterways.

Inside the shop, most drains carry waste into a sanitary sewer and on to the local wastewater treatment plant, where motor oils, metals, and vehicle fluids can also cause problems — and still end up in the Bay or Delta.



How You Can Help!

Waste oil, antifreeze, and other vehicle fluids contain toxic chemicals and heavy metals from wear and tear of engine parts.

- Drain vehicle fluids** indoors and only on non-porous floors.
- Always use a drip pan** when draining fluids.
- Transfer fluids** drained from vehicles to a designated waste storage area as soon as possible.
- Never pour vehicle fluids** or any hazardous wastes into sinks, toilets, floor drains, outside storm drains, or put in the garbage.
- Prevent spills** from reaching storm drains:
 - Work over an absorbent mat
 - Cover nearby storm drains
 - Work in a bermed area, or
 - Use absorbent socks to create a bermed area
- Use absorbents or rags** to clean up any spilled oil or fluids.

