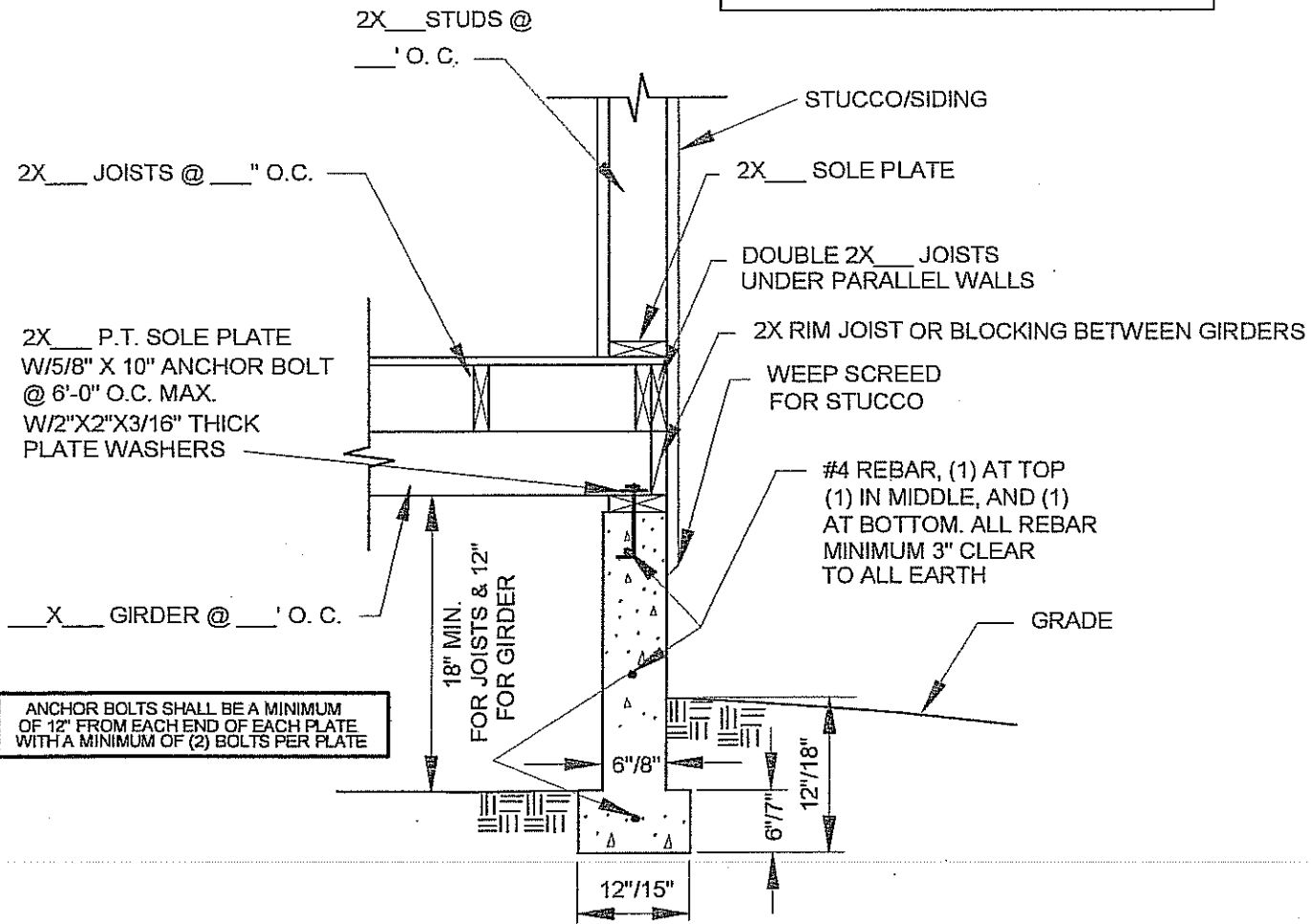
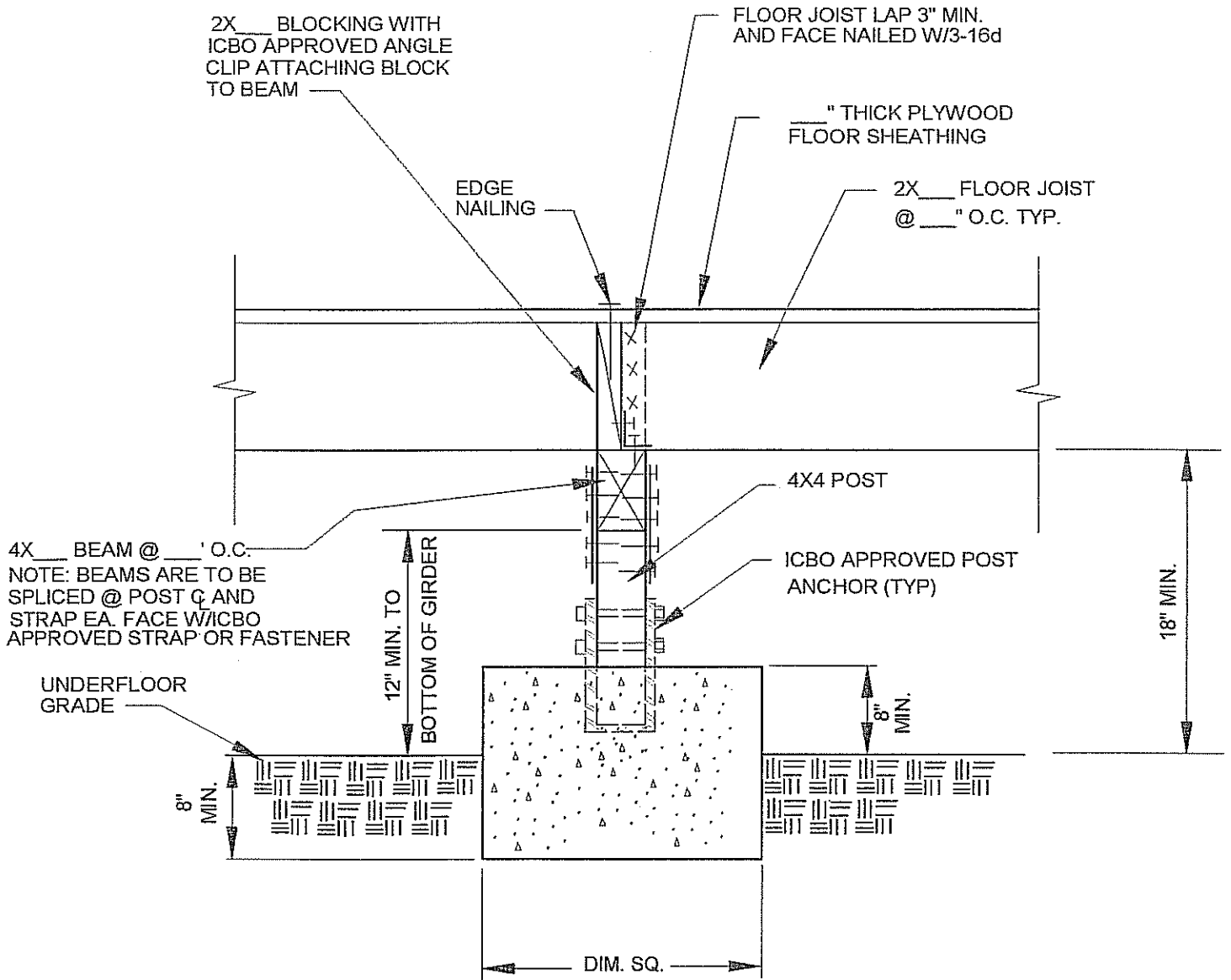


PROVIDE A MINIMUM OF AN 18" X 24" UNDERFLOOR ACCESS. UNDERFLOOR PLUMBING CLEANOUTS SHALL BE NO GREATER THAN 20 FEET FROM AN UNDERFLOOR ACCESS.



ANCHOR BOLTS SHALL BE A MINIMUM OF 12" FROM EACH END OF EACH PLATE WITH A MINIMUM OF (2) BOLTS PER PLATE

TYPICAL "TEE" FOOTING/NON-EXPANSIVE SOILS GIRDER CONSTRUCTION



FOR INFORMATION NOT SHOWN REFER TO THE U.B.C. "CONVENTIONAL CONSTRUCTION PROVISIONS". ALL INFORMATION SHOWN ABOVE ARE MINIMUM REQUIREMENTS
NOTE: USE FOR NON-EXPANSIVE SOILS CONDITIONS

FLOOR JOISTS/BEAM @ INT. FOUNDATION

WEATHER RESISTIVE BARRIER UNDER SIDING WITHOUT STUCCO

ANCHOR BOLTS SHALL BE A MAXIMUM OF 12" FROM EACH END OF EACH PLATE WITH A MINIMUM OF (2) BOLTS PER PLATE

2X ___ STUDS @ ___" O.C.

2X ___ P. T. SOLE PLATE
W/5/8" X 10" ANCHOR BOLT @ 6'-0" O.C. MAX.
W/2"X2"X3/16" THICK PLATE WASHERS

MIN. 3/8" PLYWOOD OR EXTERIOR SIDING NAILED 6:12

STUCCO WEEP SCREED 4" ABOVE EARTH OR 2" ABOVE PAVED AREAS

R-___ INSUL.

4" THICK CONCRETE SLAB W/ 6X6X10 WWM O/2" SAND O/6 MIL VISQUEEN O/4" GRAVEL

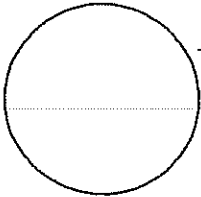
GRADE

6" MIN.

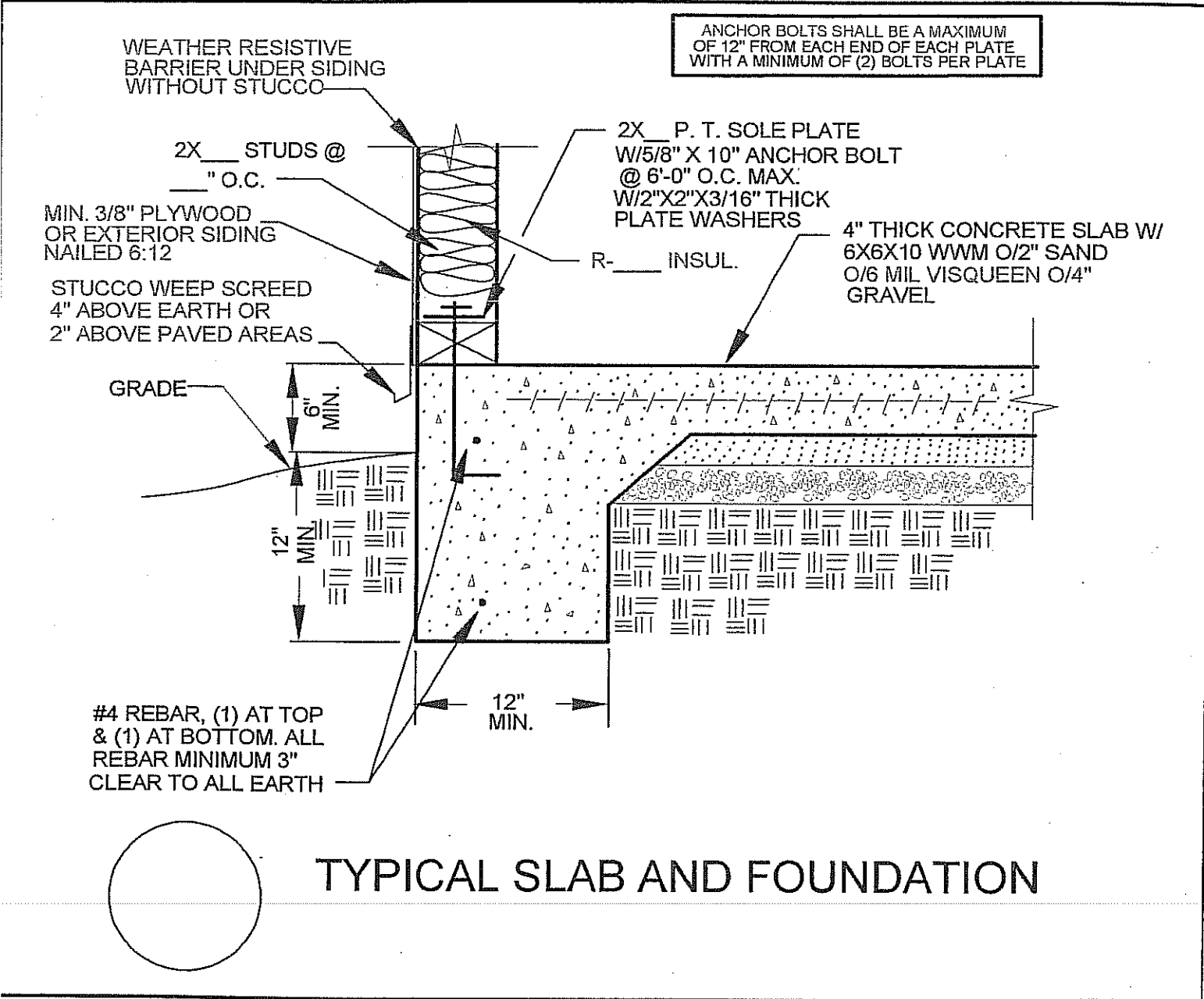
12" MIN.

12" MIN.

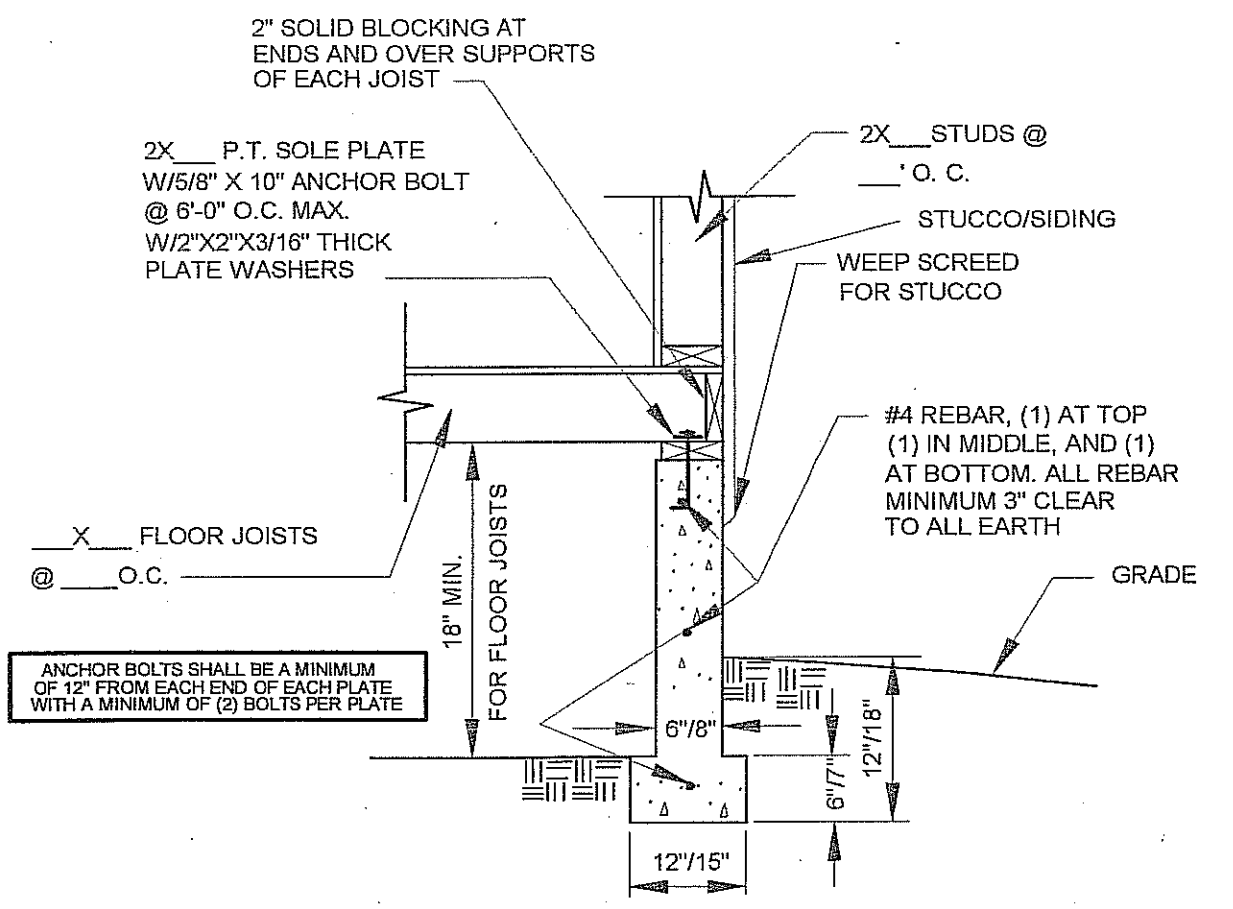
#4 REBAR, (1) AT TOP & (1) AT BOTTOM. ALL REBAR MINIMUM 3" CLEAR TO ALL EARTH



TYPICAL SLAB AND FOUNDATION



PROVIDE A MINIMUM OF AN 18" X 24" UNDERFLOOR ACCESS. UNDERFLOOR PLUMBING CLEANOUTS SHALL BE NO GREATER THAN 20 FEET FROM AN UNDERFLOOR ACCESS.



TYPICAL "TEE" FOOTING/NON-EXPANSIVE SOILS JOIST CONSTRUCTION

*