



**AGENDA SUBMITTAL TO SOLANO COUNTY SUPERVISORS**

<b>ITEM TITLE</b>		<b>BOARD MEETING DATE</b>	<b>AGENDA NUMBER</b>
Consider adopting an Ordinance repealing Sections 1.4-11 through 1.4-15 of Solano County Code Chapter 1.4 and adding Sections 1.4-11 through 1.4-15 to Chapter 1.4, adjusting and setting the boundaries of all the supervisorial districts following the 2010 Federal Decennial Census		August 9, 2011	12
<b>Dept:</b>	County Administrator	<b>Supervisorial District Number</b> All	
<b>Contact:</b>	Birgitta Corsello		
<b>Phone:</b>	(707) 784-6100		
<b>Published Notice Required</b>		Yes _____	No <u>  X  </u>
<b>Public Hearing Required</b>		Yes <u>  X  </u>	No _____

**DEPARTMENTAL RECOMMENDATION:**

It is recommended that the Board of Supervisors adopt an Ordinance repealing Sections 1.4-11 through 1.4-15 of Chapter 1.4 of the Solano County Code and adding Sections 1.4-11 and 1.4-15 to Chapter 1.4, adjusting and setting all the supervisorial districts following the 2010 Federal Decennial Census.

**SUMMARY**

On July 26, 2011 the Board conducted a public hearing to introduce an ordinance repealing Sections 1.4-11 through 1.4-15 of Solano County Code Chapter 1.4 and adding Sections 1.4-11 through 1.4-15 to Chapter 1.4, adjusting and setting the boundaries of all the supervisorial districts consistent with the Approved Redistricting Plan Map, as required by California Elections Code section 21500.1. This meeting constitutes the second public hearing of the Ordinance and staff recommends that the Board adopt the Ordinance at the close of the hearing. Details on the Redistricting Plan and alternatives considered by the Board in the public process can be found at the Solano County Redistricting Website [www.solanocounty.com/redistricting/](http://www.solanocounty.com/redistricting/).

**FINANCING**

The County Administrator included funding for consultant services in the FY2010/11 Budget to assist in the County's efforts to develop a redistricting plan that meets the requirements of law and addresses Board and Community concerns. A contract was executed with Environmental Stewardship & Planning, Inc. for consultant services for \$49,000, of which approximately \$36,000 has been expended for redistricting services. Some incidental costs that have been experienced in performing public outreach are expected to be absorbed within existing budgeted resources.

## **DISCUSSION**

Federal and state law requires counties to undergo an adjustment to their supervisorial district boundaries to reflect the outcome of each federal decennial census. The 2000 census counted a total of 394,542 residents in Solano County and resulted in a desired number of residents in each district of 78,908, or 394,542 divided by 5. The 2010 census reported a total of **413,344** persons living in Solano County as of April 1, 2010. Using the same criteria to determine the desirable mean population for each district, (i.e., divide the total population by the number of supervisorial districts) a desirable mean population of **82,669** results.

The final boundary alignment proposed for adoption in the Ordinance meets the requirements of the Voting Rights Act to reflect district populations of roughly equal numbers, in accordance with the 2010 Federal Decennial Census. The table below provides the details for each district, showing the population of each district relative to the total.

### Solano County 2010 Decennial Census Supervisorial Districts Population Characteristics – Summary July 2011

#### **Current Districts – Boundaries Established August 2001**

<b>Supervisorial District</b>	<b>2001 Pop After Redistricting</b>	<b>2010 Population</b>	<b>Mean</b>	<b>Deviation</b>	<b>% Deviation</b>
District 1	78,535	79,484	82,669	-3,185	-3.85%
District 2	78,875	81,598	82,669	-1,071	-1.30%
District 3	78,845	86,870	82,669	4,201	5.08%
District 4	79,026	79,461	82,669	-3,208	-3.88%
District 5	79,261	85,931	82,669	3,262	3.95%
Total	394,542	413,344		0	0

- Ideal Population: 82,669.
- Deviation:     Lowest Population = -3,208 or -3.88%  
                  Highest Population = 4,201 or 5.08%
- Overall Range: 8.96%

**2011 Approved Redistricting Plan Districts**

Supervisory District	2010 Population	Approved Plan Population	Net Population Gain/Loss	Mean	Deviation	% Deviation
District 1	79,484	83,484	4,000	82,669	815	0.99%
District 2	81,598	82,904	1,306	82,669	235	0.28%
District 3	86,870	82,900	-3,970	82,669	231	0.28%
District 4	79,461	82,788	3,327	82,669	119	0.14%
District 5	85,931	81,268	-4,663	82,669	-1,401	-1.69%
Total	413,344	413,344			0	0

- Ideal Population: 82,669.
- Deviation:     Lowest Population = -1,401 or -1.69%  
                   Highest Population = 815 or 0.99%
- Overall Range: 2.68%

As can be seen from the population numbers reflected in boundary alignment in the proposed Ordinance, reasonable parity is achieved among the five supervisory districts, with less than a three percent (2.68%) spread between the smallest and largest district.

**Background**

On January 25, 2011 the Board established the initial process and timeline for undertaking the 2011 supervisory redistricting in response to the 2010 Federal Decennial Census. After the census data was released in March, further direction was given to staff at the Board’s April 12, 2011 meeting to prepare alternative plans, each of which to attain as close as practicable the ideal district population of 82,669. Pursuant to Board direction staff created three Alternatives: A, B, and C, as potential redistricting scenarios to attain the ideal population objective. Four public workshops were held to receive input on these plans.

On June 7, 2011 and continued to the June 14<sup>th</sup> regular board meeting, the Board conducted study sessions to review the Alternatives and provided further direction. On June 14<sup>th</sup> the Board’s direction was to create two additional redistricting plans which were responsive to the public’s and the Board’s comments, including: not increasing the number of Supervisors representing the City of Fairfield; to the extent practicable, drawing boundaries consistent with land use and regional strategic planning; and respecting current boundaries where possible. The additional redistricting plans were developed and presented as Alternatives “D” and “E”. Alternative scenario E which later becomes the bases for the proposed Redistricting Plan includes the following:

- Between District 1 and District 2 the area bounded by Georgia Street on the south and Tennessee Street on the north currently in District 2 moves to District 1 (same as Alternative D).

- Between District 2 and District 3, the District 2 boundary north of I-80 continues north along the current district boundary line generally along the Green Valley Road corridor to a point south of Rockville Road and turns east along the current boundary of the City of Fairfield to Suisun Valley Road and then north along Suisun Valley Road to the county line; in addition, the boundary moves east from I-680 through the Suisun Marsh to the common boundary with District 5 and north-east along the southern boundary of I-80 from Cordelia to Pennsylvania Avenue in Fairfield using West Texas Street as the north boundary line.
- Between District 4 and District 5 the current boundary line shifts from Midway Road west to Midway road east to the county line. The City of Dixon and the area north-west of I-80 north of Midway all goes into District 4. District 5 picks up additional District 4 population near Travis Air Force Base east of Peabody and additional area within the City of Fairfield north of Airbase Parkway. District 5 gives up additional area and population to District 4 in the area south of I-80 west of Nut Tree Road to Marshall Road west to the current boundary line at Peabody Road.
- District 3 and District 5 exchange population in Suisun City whereby area and population moves from District 5 to District 3 in the Prosperity Lane, Pintail Dr., McCoy Creek area.
- line at Peabody Road.

On June 21<sup>st</sup> the Board conducted a public hearing on the five alternatives prepared by staff. At the conclusion of the hearing the Board selected Alternative Scenario "E" with modifications discussed by the Board at the meeting, as the Board's Preferred Redistricting Alternative Map and Boundaries, and officially known as the Proposed Redistricting Plan. The modifications included:

- the area in Suisun Valley shown in District 2 remains as the current District 3 existing boundary (as reflected in Alternative Scenario "D");
- the Travis Air Force Base "on-base" housing shown in District 3 moves to District 5 as shown in Scenario "D"; and
- the area in Suisun City west of Bluebird Drive and north of Pintail Drive moves from District 5 to District 3.

These changes were reflected in the map labeled the "Approved Redistricting Plan" (Attachment A). The map was made available for public review at County libraries, the Registrar of Voters Office in Fairfield and the County website. A public hearing on the Proposed Redistricting Plan was conducted on June 28<sup>th</sup> with no action was taken at the conclusion of the hearing.

On July 6, 2011 the Board conducted a public hearing to consider approval of the Proposed Redistricting Plan, as required by California Elections Code section 21500.1. By a 3 to 2 vote, the Board approved the Proposed Redistricting Plan as recommended. The Board also directed staff to prepare an ordinance adjusting and setting the boundaries of the supervisorial districts for introduction at a public hearing on July 26, 2011 at 2 p.m.

On July 26, 2011 the Board conducted a public hearing to introduce the ordinance adjusting and setting the boundaries of the supervisorial districts. By a 4 to 1, vote the Board waived the reading of the proposed Ordinance and read the Ordinance by title only. By a 3 to 2 vote, the Board approved the introduction of the Ordinance as recommended.

The legal descriptions for the five supervisorial districts were prepared by the Department of Resource Management, based upon the Approved Redistricting Plan map and incorporated into the proposed Ordinance (Attachment C).

The public comments received by the Board, at board meetings, workshops, and via email through August 2<sup>nd</sup>, have been compiled and are attached as Redistricting Public Comments (Attachment D).

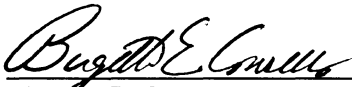
**ALTERNATIVE ACTIONS**

The Board could reject adoption of the proposed Ordinance, but such action would prevent the Registrar of Voters from completing the process of re-drawing precinct boundaries in advance of future elections.

**OTHER AGENCY INVOLVEMENT:**

The County Administrator's Office has been assisted in this effort by County Counsel, Department of Information Technology, Registrar of Voters, Resource Management and the Consultant.

**DEPARTMENT HEAD SIGNATURE:**



\_\_\_\_\_  
Birgitta E. Corsello  
County Administrator

- Attachment A: 2011 Redistricting Process and Timeline
- Attachment B: Redistricting Plan Map
- Attachment C: Proposed Ordinance
- Attachment D: Redistricting Public Comments

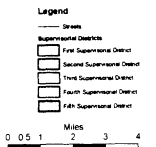
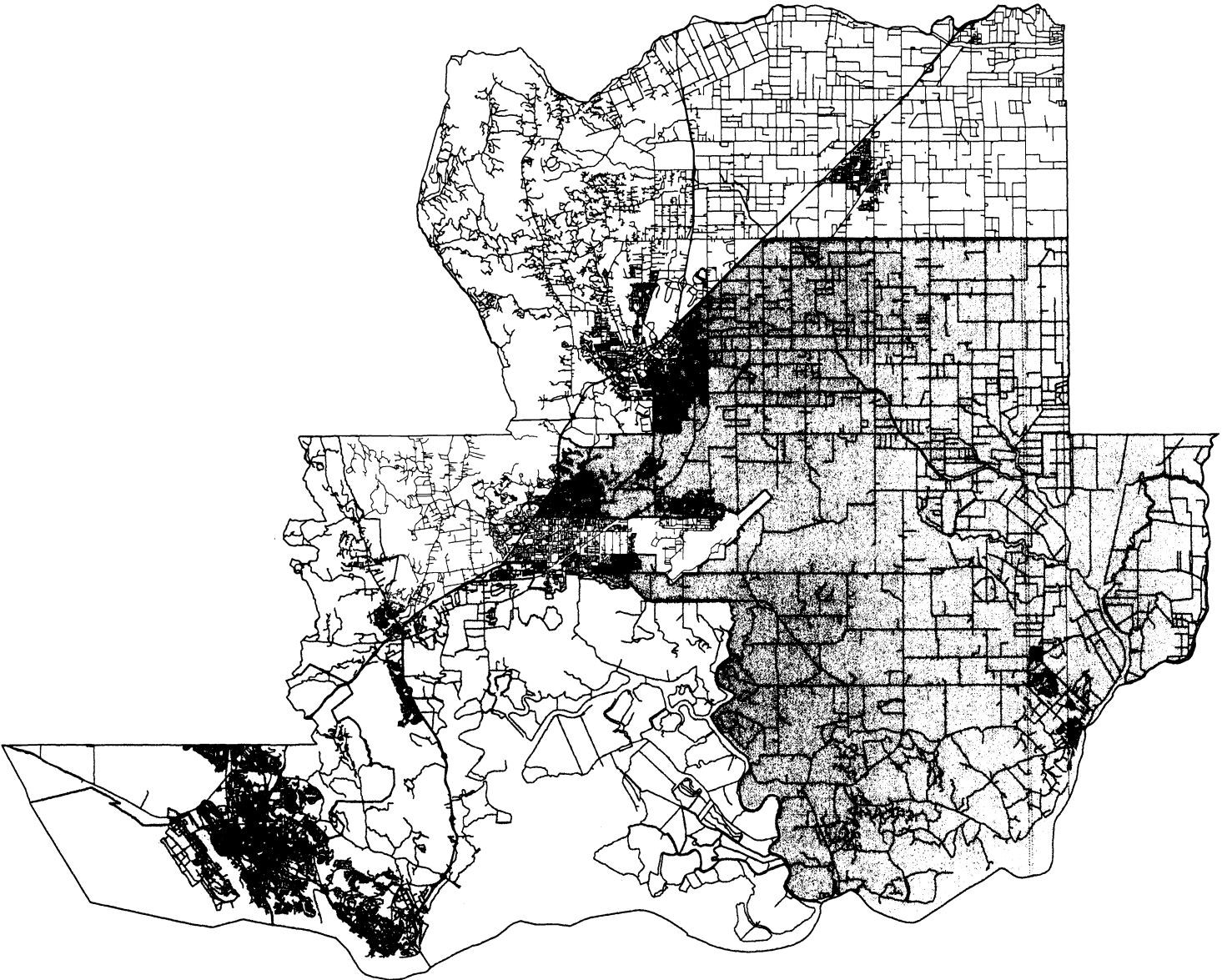
**Process and Timeline (Amended on June 28, 2011)**

The following timeline sets forth those activities that are required under the Elections Code and those that are optional but may assist in the development of alternatives. The targeted completion date of this process is no later than the end of September 2011 in order to meet the practical deadlines imposed by the November 2011 election and the yet to be determined 2012 Presidential Primary.

<b>Date</b>	<b>Required</b>	<b>Optional</b>	<b>Activity</b>
January 25, 2011		X	Board receives overview of redistricting process via this memorandum and presentation, adopts recommended procedure, appoints Ad Hoc Advisory Committee and Technical Group
April 1, 2011	X		Census data is released and made available to County
April		X	Census data and maps loaded onto County GIS system; using mapping program with a redistricting module Tech Group identifies which Census Blocks are in which Supervisorial District and accordingly, the current population and the respective characteristics within each District. The desired Mean population per district will be determined and the resultant Deviation from that Mean will be identified, i.e., the number that will need to be either increased or reduced for each district to achieve relative parity.
April 12		X	Briefing to full Board identifying results of Census, including appropriate adjustments, and the status of each district vis-a-vis the Mean. Provide direction regarding community workshops.
Week of May 23		X	Develop 3-5 scenarios depending on Census data and conduct community workshops in Fairfield, Dixon, and Vallejo –to receive community feedback on alternatives.
June 7		X	Full BOS conducts Study Session on three Redistricting Alternatives and directs staff regarding any changes to further refine preferred choice to be brought back on June 21, 2011
June 13		X	Conduct community workshops in Vacaville – to receive community feedback on the three alternatives presented at previous community workshops.
June 14		X	Full BOS continues Study Session on three Redistricting Alternatives and directs staff regarding any changes to further refine preferred choice to be brought back on June 21, 2011
June 21		X	Full BOS conducts Public Hearing on Redistricting Alternatives; BOS to determine a Preferred Alternative to be brought back for first public hearing on Preferred Alternative.
June 28	X		BOS conducts public hearing on preferred redistricting plan
July 6	X		BOS conducts public hearing to consider approval of the proposed redistricting plan as required under Elections Code section 21500.1 and directs staff to bring back an ordinance for introduction at a public hearing on July 26, 2011.
July 26	X		BOS conducts public hearing to introduce the ordinance adjusting and setting the boundaries of the supervisorial districts.
August 9	X		BOS adopts the ordinance.

# Solano County Supervisory Re-Districting Project 2011 Approved Redistricting Plan

District Name	Population	Ideal Value	Deviation	% Deviation
1st Supervisorial District	83484	82669	815	0.99%
2nd Supervisorial District	82904	82669	235	0.28%
3rd Supervisorial District	82900	82669	231	0.28%
4th Supervisorial District	82788	82669	119	0.14%
5th Supervisorial District	81268	82669	-1401	-1.69%



**Ordinance No. 2011- \_\_\_\_\_**

ORDINANCE AMENDING CHAPTER 1.4, RELATING TO SUPERVISORIAL DISTRICTS

The Solano County Board of Supervisors ordains:

Chapter 1.4 is amended as follows:

**Section 1.** Section 1.4-11 is repealed.

**Section 2.** Section 1.4-11 is added to read:

**Section 1.4-11. Supervisorial District Number 1.**

The boundaries of Supervisorial District Number 1 are:

COMMENCING at the most westerly point of the County of Solano on the common line of the County of Solano and the County of Napa said point being the TRUE POINT OF BEGINNING of this description; Thence southeasterly along the common line between the County of Solano and the County of Sonoma to the north line of the City of Vallejo city limits; Thence northeasterly along the Vallejo city limits to the west line of Mare Island; thence southeasterly along the west side of Mare Island to the intersection with the south line of Section 9 Township 3 North Range 4 West Mount Diablo Meridian; Thence easterly along the south line of Sections 9 and 10 to an angle point in the city limit line; Thence northerly along said city limit line 1350 +/- feet to the centerline of Sears Point Road (State Route 37); Thence west along the centerline of Sears Point Road 500 +/- feet to the west line of the old Guadalcanal Village; Thence north east and south around the west north and east line of the old Guadalcanal Village to the centerline of Sears Point Road; Thence easterly along the centerline of Sears Point Road to the centerline of the Napa River (AKA Mare Island Strait); Thence southerly along the centerline of Napa River to the Mare Island Causeway; Thence easterly along the centerline of Mare Island Causeway-G Street to the intersection of Tennessee Street, Wilson Avenue and Mare Island Way; Thence southerly along the centerline of Mare Island Way to the centerline of Main Street; Thence northeasterly on Main Street to the centerline of Santa Clara Street; Thence northerly along the centerline of Santa Clara Street to the centerline of Georgia Street; Thence easterly along the prolongation of the centerline of Georgia Street to the intersection with the westerly prolongation of the south line of the Sphere of Influence of the City of Vallejo approved per Volume 1, Page 329 of LAFCO Minutes April 2, 1973; Thence along the prolongation of the south line of the City of Vallejo Sphere of influence 1973 to the westerly line of the Sphere of Influence of the City of Benicia approved per Volume 1, Page 329 of LAFCO Minutes April 2, 1973; Thence northerly and easterly along the westerly and northerly line of the Sphere of Influence of the City of Benicia 1973 to the easterly line of the City of Vallejo Sphere of Influence approved per Volume 3, Page 217 of LAFCO Minutes February 2, 1981; Thence northerly and westerly along the easterly and northerly line of the City of Vallejo Sphere of Influence to the easterly line of the City of Vallejo Sphere of Influence approved per Volume 3, Page 355 of LAFCO Minutes June 7, 1982; Thence northerly and westerly along the easterly and northerly line of the City of Vallejo Sphere of Influence to the Napa-Solano County boundary in Section 16, Township 4 North Range 3 West Mount Diablo Meridian; Thence southerly and westerly to the TRUE POINT OF BEGINNING and the end of this description.



**Section 3.** Section 1.4-12 is repealed.

**Section 4.** Section 1.4-12 is added to read:

**Section 1.4-12. Supervisorial District Number 2.**

The boundaries of Supervisorial District Number 2 are:

COMMENCING at the intersection of the northerly line of the Napa-Solano boundary and the northerly extension of the center of Green Valley Creek said point being the TRUE POINT OF BEGINNING of this description; Thence southerly along the center of Green Valley Creek to the north line of Section 23 Township 5 North Range 3 West Mount Diablo Meridian; Thence easterly and southerly along the north and east boundary of Section 23 to the southeast corner of Section 23; Thence south 1650+/- to the northwest corner of Parcel "F" as shown on the Parcel Map filed in Book 34 of Parcel Maps at Page 90; Thence south and east along the west line of said Parcel "F" to the west line of Emerald Ridge Lane; Thence southerly along the west line and southerly prolongation of the west line of Emerald Ridge Lane to the centerline of Rockville Road; Thence easterly along the centerline of Rockville Road to the centerline of the Pacific Gas and Electric power line easement across Rockville Park in a northeast to southwest alignment; Thence southwesterly along the centerline of the Pacific Gas and Electric power line easement to the city limit line of the City of Fairfield; Thence southwesterly, southerly, southeasterly, southwesterly, northwesterly and southwesterly to the intersection of Green Valley Road; Thence southeasterly along the centerline of Green Valley Road to the intersection of California Interstate 80; Thence northeasterly along the centerline of Interstate 80 to the intersection of West Texas Street in the City of Fairfield; Thence easterly along the centerline of West Texas Street to the intersection of Pennsylvania Avenue; Thence Southerly on the centerline of Pennsylvania Avenue crossing State Route 12 to the intersection of Cordelia Road; Thence easterly along the centerline of Cordelia Road to the westerly city limit of the City of Suisun City; Thence following the limits of the City of Suisun City southerly, easterly, northerly, easterly and northerly to the intersection of State Route 12; Thence easterly along the centerline of State route 12 to the northerly extension of Nurse Slough; Thence southerly along the meanderings of Nurse Slough to the intersection with Montezuma Slough; Thence southerly along the Meanderings of Montezuma Slough to the Sacramento and Solano boundary; Thence southwesterly to the Contra Costa-Solano boundary; Thence westerly along the Contra Costa-Solano boundary to the common point on the Contra Costa-Solano-Sonoma-Marin boundary; Thence northwesterly along the Sonoma-Solano boundary 4 +/- miles to the north line of the City of Vallejo city limits; Thence northeasterly along the Vallejo city limits to the west line of Mare Island; thence southeasterly along the west side of Mare Island to the intersection with the south line of Section 9 Township 3 North Range 4 West Mount Diablo Meridian; Thence easterly along the south line of Sections 9 and 10 to an angle point in the city limit line; Thence northerly along said city limit line 1350 +/- feet to the centerline of Sears Point Road (State Route 37); Thence west along the centerline of Sears Point Road 500+/- feet to the west line of the old Guadalcanal Village; Thence north east and south around the west north and east line of the old Guadalcanal Village to the centerline of Sears Point Road; Thence easterly along the centerline of Sears Point Road to the centerline of the Napa River (AKA Mare Island Strait); Thence southerly along the centerline of Napa River to the Mare Island Causeway; Thence easterly along the centerline of Mare Island Causeway-G Street to the intersection of Tennessee Street, Wilson Avenue and Mare Island Way; Thence southerly along the centerline of Mare Island Way to the centerline of Main Street; Thence northeasterly on the centerline of Main Street to the centerline of Santa Clara Street; Thence northerly along the centerline of Santa Clara Street to the centerline of Georgia Street; Thence easterly along the prolongation of the centerline of Georgia Street to the intersection with the westerly prolongation of the south line of the Sphere

of Influence of the City of Vallejo approved per Volume 1, Page 329 of LAFCO Minutes April 2, 1973; Thence along the prolongation of the south line of the City of Vallejo Sphere of influence 1973 to the westerly line of the Sphere of Influence of the City of Benicia approved per Volume 1, Page 329 of LAFCO Minutes April 2, 1973; Thence northerly and easterly along the westerly and northerly line of the Sphere of Influence of the City of Benicia 1973 to the easterly line of the City of Vallejo Sphere of Influence approved per Volume 3, Page 217 of LAFCO Minutes February 2, 1981; Thence northerly and westerly along the easterly and northerly line of the City of Vallejo Sphere of Influence to the easterly line of the City of Vallejo Sphere of Influence approved per Volume 3, Page 355 of LAFCO Minutes June 7, 1982; Thence northerly and westerly along the easterly and northerly line of the City of Vallejo Sphere of Influence to the Napa-Solano County boundary in Section 16, Township 4 North Range 3 West Mount Diablo Meridian; Thence northerly along the Napa-Solano County boundary to the north line of Township 5 North Range 3 West Mount Diablo Meridian; Thence continuing easterly along the Napa-Solano County boundary to the TRUE POINT OF BEGINNING and the end of this description.

**Section 5.** Section 1.4-13 is repealed.

**Section 6.** Section 1.4-13 is added to read:

**Section 1.4-13. Supervisorial District Number 3**

The boundaries of Supervisorial District Number 3 are:

COMMENCING at the intersection of the centerline of California Interstate 80 in Solano County and the centerline of Cherry Glen Road and Lagoon Valley Road overcrossing said point being THE TRUE POINT OF BEGINNING of this description; Thence due west to the intersection with the Napa-Solano County boundary; Thence following the Napa-Solano County boundary southwesterly, southeasterly, southerly and westerly to the northerly extension of the center of Green Valley Creek; Thence southerly along the center of Green Valley Creek to the north line of Section 23 Township 5 North Range 3 West Mount Diablo Meridian; Thence easterly and southerly along the north and east boundary of Section 23 to the southeast corner of Section 23; Thence south 1650+/- to the northwest corner of Parcel "F" as shown on the Parcel Map filed in Book 34 of Parcel Maps at Page 90; Thence south and east along the west line of said Parcel "F" to the west line of Emerald Ridge Lane; Thence southerly along the west line and southerly prolongation of the west line of Emerald Ridge Lane to the centerline of Rockville Road; Thence easterly along the centerline of Rockville Road to the centerline of the Pacific Gas and Electric power line easement across Rockville Park in a northeast to southwest alignment; Thence southwesterly along the centerline of the Pacific Gas and Electric power line easement to the city limit line of the City of Fairfield; Thence southwesterly, southerly, southeasterly, southwesterly, northwesterly and southwesterly to the intersection of Green Valley Road; Thence southeasterly along the centerline of Green Valley Road to the intersection of California Interstate 80; Thence northeasterly along the centerline of Interstate 80 to the intersection of West Texas Street in the City of Fairfield; Thence easterly along the centerline of West Texas Street to the intersection of Pennsylvania Avenue; Thence Southerly on the centerline of Pennsylvania Avenue crossing State Route 12 to the intersection of Cordelia Road; Thence easterly along the centerline of Cordelia Road to the westerly city limit of the City of Suisun City; Thence following the limits of the City of Suisun City southerly, easterly, northerly, easterly and northerly to the intersection of State Route 12; Thence westerly along the centerline of State route 12 to the intersection with the centerline of McCoy Creek in the City of Suisun City; Thence northeasterly along the centerline of McCoy Creek to the centerline of Pintail Drive; Thence Easterly along the centerline of Pintail Drive to Bluejay Drive; Thence

northerly on the centerline of Bluejay Drive to the centerline of Bella Vista Drive; Thence easterly along the centerline of Bella Vista Drive to the intersection of Walters Road; Thence continuing easterly along the centerline of Bella Vista Drive to the intersection of Charleston Street; Thence northerly along the centerline of Charleston Street to the northerly line of the Montebello Vista Subdivision filed for record in Book 53 of Subdivision Maps at Page 91 Solano County Records; Thence east along said northerly line and northerly line extended to the western boundary of Travis Air Force Base; Thence south along said west boundary to the intersection of Peterson Road; Thence east along said centerline of Peterson Road to the western boundary of Travis Air Force Base at the South Gate Entrance; Thence following the boundary of Travis Air Force Base southwesterly, southerly, easterly and northeasterly to the intersection with Brandscome Road (County Road Number 362); Thence northerly along the centerline of Brandscome Road to the centerline of Creed Road (County Road Number 68); Thence east along the centerline of Creed Road approximately 2,660 feet to and angle point in the south boundary of Travis Air Force Base; Thence continuing along said boundary northerly, easterly, northerly, northeasterly, northerly, easterly, northerly, northeasterly to the intersection with Meridian Road South (Abandoned); Thence continuing along the boundary of Travis Air Force Base easterly, northerly and northeasterly to the most easterly corner of Travis Air Force Base; Thence continuing along the boundary of Travis Air Force Base northwesterly and southwesterly to Meridian Road South (Abandoned); Thence leaving said boundary of Travis Air Force Base west to the centerline of Collins Drive; Thence along said centerline of Collins Drive westerly and northwesterly to the centerline of Vandenberg Drive extended; Thence southwesterly along the northeasterly extension of the centerline of Vandenberg Drive to the intersection of Hospital Drive; thence southerly along the centerline of Hospital Drive to the intersection of E Street (AKA Airlift Drive); Thence southwesterly along the centerline of E Street to the intersection of 2<sup>nd</sup> Street (AKA Burgan Boulevard); Thence northerly along the centerline of 2<sup>nd</sup> Street to the intersection of Travis Avenue; Thence westerly along the centerline of Travis Avenue to Air Base Parkway; Thence westerly along the centerline of Air Base Parkway to the intersection of California Interstate 80; Thence northwesterly and northerly along the centerline of Interstate 80 to the intersection of Cherry Glen Road and Lagoon Valley Road overcrossing to the TRUE POINT OF BEGINNING and the end of this description.

**Section 7.** Section 1.4-14 is repealed.

**Section 8.** Section 1.4-14 is added to read:

**Section 1.4-14. Supervisorial District Number 4.**

The boundaries of Supervisorial District Number 4 are:

COMMENCING at the intersection of the Solano-Yolo County boundary with the centerline of Midway Road at the northeast corner of Section 36 Township 7 North Range 2 East Mount Diablo Meridian said point being THE TRUE POINT OF BEGINNING of this description; Thence westerly along the centerline of Midway Road to the intersection with California Interstate 80; Thence southwesterly along the centerline of said Interstate to the intersection of Nut Tree Road within the City of Vacaville California; Thence southeasterly, southerly, southwesterly and southerly along the centerline of Nut Tree Road to the intersection of Marshall Road; Thence westerly along the centerline of Marshall Road to the intersection of Peabody Road; Thence southeasterly and southerly along the centerline of Peabody Road to the intersection of the southerly city limit line for the City of Vacaville; Thence westerly along said limit line to the city limit line of Annexation number 78 of the Lower Lagoon Valley of the City of Vacaville adopted June 25, 1991; Thence westerly, southeasterly, southerly, westerly and northwesterly along said annexation line to the intersection of California Interstate 80; Thence northeasterly along the

centerline of Interstate 80 to the intersection with the Cherry Glen Road and Lagoon Valley Road overcrossing; Thence due west to the intersection with the Napa-Solano County boundary; Thence northwesterly, northerly and northeasterly along said Napa-Solano County boundary to the intersection of the Napa- Yolo-Solano County boundaries at Monticello Dam; Thence along the Yolo-Solano County boundary easterly, southeasterly, northeasterly and easterly to the northeasterly corner of section 24 Township 8 North Range 2 East said corner being on the Yolo-Solano County boundary said point being the most northeasterly point of the County of Solano; Thence southerly along the Yolo-Solano County boundary to the intersection with Midway Road at the northeast corner of Section 36 Township 7 North Range 2 East being the TRUE POINT OF BEGINNING and the end of this description.

**Section 9.** Section 1.4-15 is repealed.

**Section 10.** Section 1.4-15 is added to read:

**Section 1.4-15. Supervisorial District Number 5.**

The boundaries of Supervisorial District Number 5 are:

COMMENCING at the intersection of the Solano-Yolo County boundary with the centerline of Midway Road at the northeast corner of Section 36 Township 7 North Range 2 East Mount Diablo Meridian said point being THE TRUE POINT OF BEGINNING of this description; Thence southerly along the Yolo-Solano boundary to the southeast corner of Section 36 Township 6 North Range 2 East and an angle point in the county boundary; Thence East along the Yolo-Solano boundary to Steamboat Slough and the boundary with Sacramento County; Thence southerly, southwesterly, westerly, northwesterly and southwesterly along the Sacramento-Solano County boundary to the centerline of Montezuma Slough near the town of Collinsville; Thence in a northwesterly direction following the meanderings of Montezuma Slough to the intersection with Nurse Slough; Thence in a northerly direction following the meanderings of Nurse Slough to the intersection with State Route 12; Thence westerly along the centerline of State Route 12 to the intersection with the centerline of McCoy Creek in the City of Suisun City; Thence northeasterly along the centerline of McCoy Creek to the centerline of Pintail Drive; Thence Easterly along the centerline of Pintail Drive to Bluejay Drive; Thence northerly on the centerline of Bluejay Drive to the centerline of Bella Vista Drive; Thence easterly along the centerline of Bella Vista Drive to the intersection of Walters Road; Thence continuing easterly along the centerline of Bella Vista Drive to the intersection of Charleston Street; Thence northerly along the centerline of Charleston Street to the northerly line of the Montebello Vista Subdivision filed for record in Book 53 of Subdivision Maps at Page 91 Solano County Records; Thence east along said northerly line and northerly line extended to the western boundary of Travis Air Force Base; Thence south along said west boundary to the intersection of Peterson Road; Thence east along said centerline of Peterson Road to the western boundary of Travis Air Force Base at the South Gate Entrance; Thence following the boundary of Travis Air Force Base southwesterly, southerly, easterly and northeasterly to the intersection with Brandscome Road (County Road Number 362); Thence northerly along the centerline of Brandscome Road to the centerline of Creed Road (County Road Number 68); Thence east along the centerline of Creed Road approximately 2,660 feet to an angle point in the south boundary of Travis Air Force Base; Thence continuing along said boundary northerly, easterly, northerly, northeasterly, northerly, easterly, northerly, northeasterly to the intersection with Meridian Road South (Abandoned); Thence continuing along the boundary of Travis Air Force Base easterly, northerly and northeasterly to the most easterly corner of Travis Air Force Base; Thence continuing along the boundary of Travis Air Force Base northwesterly and southwesterly to Meridian Road South (Abandoned); Thence leaving said boundary of Travis Air Force Base



Ordinance No. 2011- \_\_\_\_\_

Passed and adopted by the Solano County Board of Supervisors at its regular meeting on August 9, 2011, by the following vote:

AYES: SUPERVISORS

---

---

NOES: SUPERVISORS

---

---

EXCUSED: SUPERVISORS

---

---

Michael J. Reagan, Chair  
Solano County Board of Supervisors

ATTEST:  
Birgitta E. Corsello, Clerk  
Board of Supervisors

By: \_\_\_\_\_  
Patricia J. Crittenden, Chief Deputy Clerk

**Introduced: July 26, 2011**

**Adopted: August 9, 2011**

**Effective: September 9, 2011**

## **Redistricting Public Comments received via Board of Supervisors Meeting, Community Workshops Comment Cards, Letters Hand Delivered, and Email Submittals**

### **January 25, 2011 Board of Supervisors Meeting**

Redistricting Public comments from the January 25, 2011 Board of Supervisors Meeting were received from the following:

Donald R. Tipton

George Guynn Jr.

Comments can be found at the Solano County Board of Supervisors Agendas Minutes and Videos website as Redistricting Agenda Item 23

[http://solano.granicus.com/MediaPlayer.php?view\\_id=8&clip\\_id=572](http://solano.granicus.com/MediaPlayer.php?view_id=8&clip_id=572)

### **April 12, 2011 Board of Supervisors Meeting**

Redistricting public comments from the April 12, 2011 Board of Supervisors Meeting, were received from the following:

Donald R. Tipton

Richard Giddens

Michael Warken

George Guynn Jr.

Comments can be found at the Solano County Board of Supervisors Agendas Minutes and Videos website as Redistricting Agenda item 14

[http://solano.granicus.com/MediaPlayer.php?view\\_id=8&clip\\_id=581](http://solano.granicus.com/MediaPlayer.php?view_id=8&clip_id=581)

### **May 24, 2011 Community Workshop in Fairfield**

#### **Comment Cards Received**

This scenario (A) splits the middle Green Valley Specific Plan Area; this seems ill advised. Much work has been done in the past several years to merge Green Valley into a single, consolidated community. It should exist in a single district, in its entirety. Nancy Nelson

Unfortunately, the district plan under Scenario A breaks up an established community of interest shared by the residents of Green Valley. It also bisects the middle Green Valley Specific Plan, with 400 residents, the product of over 2 years of work by our community residents. Bill Mayben

(Scenario A) 1. There are more government workers and elected people than citizens at this meeting. Not good! 2. Many more supervisors are needed to truly represent the public. One supervisor does not need and cannot represent 82,000 people. Furthermore, when a supervisor raises over \$200K to run for office, special interest is almost guaranteed to run the show. 3. I think the alternatives presented are going to be more of the same of the present broken system. George Guynn, Jr.

I object to Scenario A. This cuts Fairfield into five districts, whereas the other cities have only two or one Supervisor. Also, the reason cited is to give Dist 1 more unincorporated area, but this does so by adding significant land from Fairfield. Scenario A also seems inferior to Scenarios B and C insofar as it maintains District Two's reach from the Napa lien all the way down to Mare Island. Jack Batson

(Scenario A) General Comment: If +/- 5% is allowed, legally there is no need to change the lines. Is that an option? Given there is more leeway than <1%, then there should be strong effort to make lines "not odd." Maybe 2-3% variation would allow much better lines. It would be good to look at other options at least. Rick Wood

(Scenario A) The lines for District 4 & 5 are ideal in this scenario, as are the lines for District 3. I would not select this scenario's realignment for District 1 & 2, as District 1 should grow south into more of Vallejo, not north into Green Valley. I prefer a modified Scenario B here. Exception: consider moving Fairfield population along Peabody from Dist 5 to District 4. No name

(Scenario B) General comment – is it good to split Suisun Valley? On one hand, good to have two Supes representing Valley. On the other one Supe might be able to give more attention. I guess I prefer 2 Super, but that's assuming they both care about SV, not neither. Rick Wood

(Scenario B) District 1 & 2 are most ideal in this scenario, although the Sandy Beach area should not be isolated into Dist 1. Keep District 3 as you have it. There appears to be no logic in a different 4/5 boundary in Vacaville in this scenario than for Scenario A. Use Scenario A instead. The line along I-80 makes sense. Anna M. Imous (No name)

The Fairfield-Airbase Parkway inset to Alternative C is totally unacceptable. This is a community of military and military retired citizens who are closely connected to Travis AFB. We do much of our business in Suisun. Patronizing businesses, library and public functions in Suisun. Diana Ricketts (email address omitted)

(Scenario C) The unification of Green Valley and the consistency of Vallejo is compelling. No name

(Scenario C) Messy, pointless, and illogical. Dump this scenario. No name

(Scenario C) Did you notice that Districts 1, 2 3 combined have almost exactly 3 x 82,669? And 4 & 5 almost exactly 2 x 82,669? What that means is you could leave the line between 1-3 and 4-5 alone. Not sure that's good, but interesting. Rick Wood

## **May 25, 2011 Community Workshop in Dixon**

### **Comment Cards Received**

(Scenario A) Only comment I have is the area give to Sup # 4, north of I-80 needs to remain in Sup # 5. And if Suisun can be moved into Sup 3 it would make more sense. No name

(Scenario A) Don't split Green Valley! Combine Suisun City. Move 5<sup>th</sup> District west to I-505 and possibly Allendale to 1<sup>st</sup> ridge line. No name

(Scenario B) Move western 5<sup>th</sup> boundary at least to I-505 so Dixon Fire, School, & Library District are united. Put Suisun City all in 3<sup>rd</sup>. Anna N. Imus (No name)

(Scenario B) Possibly the best. Least interruption to the existing districts. No name



(Scenario C) Appears too much moving of lines to accommodate current incumbents. No name

(Scenario C) Suisun City should be in ONE district with Fairfield. District Five should move western Boundary at least to I-505 – include Allendale and Lake Solano & state Prison (in that order – as needed). Those rural areas are in the Dixon School District, Fire District, Library District, and have 4-H, FFA & other organizational/social common interests. Less of Vacaville should be in the Fifth – so it doesn't overwhelm OUR communities interest. Another alternative would be to have All of Suisun in the 5<sup>th</sup> – put more of FFId in the 3<sup>rd</sup> & move none of Vacaville in the 4<sup>th</sup>. Anonymous

### **May 26, 2011 Email**

As a Vacaville resident, I am very disappointed with the outreach you have done on this important subject. The website with its descriptions and maps is a poor job in itself and does not give those of us depending on the use of our computers to get information on the committee's work. You are unable to tell from the maps what is what or where cities even have their boundaries. There are no main streets to follow. The maps are useless and there is no way to compare them to the alternatives. Kathy Freeman

### **May 26, 2011 Community Workshop in Vallejo – No Comment Cards Received**

### **May 27, 2011 Emails**

The Green Valley Landowner's Association does not support the proposed redistricting "Scenario 'A' for several reasons:

- This Scenario seriously, unnecessarily, and arbitrarily divides and interrupts "an identifiable community of interest" by proposing to impose Supervisorial District #1 onto Middle Green Valley, violating a redistricting goal.
- This scenario fails to take into account the Middle Green Valley Specific Plan completed by residents of Middle Green Valley, and the Green Valley Landowners Association, under the sponsorship of the Board of Supervisors, over the past two years, working with Hart-Howerton Architects and Planners to create a master plan for the 2000 acre study area. Not only did the Specific Plan identify the focus of a new community of 400 homes; the process emphasized the fact that all of Green Valley represents a fabric of identifiable community interest which cannot purposefully be divided. Scenario "A" described this area simply as "agricultural".
- The integrity of the Specific Plan requires the participation of the surrounding community of interest, in order to succeed.
- Scenario A fails to minimize the scope of boundary changes to two established Districts, violating a redistricting goal.
- We believe that the concept of each supervisorial district containing an equal share of unincorporated county area imposes artificial constraints on the districting exercise regarding the overarching need to maintain coherent representational districts, and should be a secondary consideration.
- Scenario A requires major adjustments to voter precincts.
- Scenario A makes the effort of Green Valley community planning and coordination more than twice as difficult, and represents a purposeful interruption of our community-based political process.
- We feel it appropriate to pull areas of District #2 back from Vallejo, allowing District #1 to gain voters, as expressed variably in Scenario "B" and "C".

Very Truly Yours,  
Bill Mayben

President, GVLA  
(email)

Good Comments. Grant Kreinberg (email)

EXCELLENT, Bill, I'm glad you submitted this! Scenario A inexplicably divides the Middle Green Valley Specific Plan between two districts. Clearly the consultant drawing the maps had no knowledge of the Plan's existence. Nancy Nelson (email)

### **June 3, 2011 Emails**

Dear Supervisors, I attended your May 26, 2010 Redistricting community meeting. Thank you for the opportunity to provide input as these potential changes are critical to Vallejo's future.

I will start out by asking you to **support Alternative B**.

The goal of this process is to make the districts as equal and compact as possible. District 1 is the County's poorest district. By changing the district boundaries as indicated in Alternatives A, and especially C, you would be further concentrating the poverty into District 1. Living in and representing Vallejo residents, I can say that this would hurt many communities of interest in our city. We need a diversity of people in our County districts, reflecting the wide breadth of our socio-economic and racial make-up.

While not perfect, **Alternative B is the best of the three alternatives**, and provides for a more balanced socio-economic District that would be more fair and best serve the many communities of interest in Vallejo. It would also ensure that a broad swath of Vallejo would be represented by somebody who lives in and best knows Vallejo -- which is important to those of us who live here.

Alternative A: this alternative makes no sense and cuts Vallejo up too much -- it maintained Hiddenbrooke in D-1, but moved D-1 into lower Green Valley; it would also keep Mare Island in D-2

Alternative B: this is the best of the three alternatives; it would maintain Hiddenbrooke in D-1 and put Sandy Beach and Mare Island into D-1 (currently D-2)

Alternative C: this alternative is the absolute worst of the three, and provides no fair representation whatsoever to the communities of interest in Vallejo

Thank you for your consideration.  
/s/ Stephanie Gomes (email)

Dear Supervisors: I have reviewed the alternatives from your May 26, 2010 Redistricting community meeting. Thank you for the opportunity to provide input as these potential changes are critical to Vallejo's future.

**I support Alternative B.**

The goal of this process is to make the districts as equal and compact as possible. District 1 is the County's poorest district. By changing the district boundaries as indicated in Alternatives A, and especially C, you would be further concentrating the poverty into District 1. Living in and representing Vallejo residents, I can say that this would hurt many communities of interest in our

city. We need a diversity of people in our County districts, reflecting the wide breadth of our socio-economic and racial make-up.

While not perfect, **Alternative B is the best of the three alternatives**, and provides for a more balanced socio-economic District that would be more fair and best serve the many communities of interest in Vallejo. It would also ensure that a broad swath of Vallejo would be represented by somebody who lives in and best knows Vallejo -- which is important to those of us who live here.

Alternative A: this alternative makes no sense and cuts Vallejo up too much -- it maintained Hiddenbrooke in D-1, but moved D-1 into lower Green Valley; it would also keep Mare Island in D-2

Alternative B: this is the best of the three alternatives; it would maintain Hiddenbrooke in D-1 and put Sandy Beach and Mare Island into D-1 (currently D-2)

Alternative C: this alternative is the absolute worst of the three, and provides no fair representation whatsoever to the communities of interest in Vallejo

Thank you for your consideration.

Robert Boyce  
133 Kentucky St  
Vallejo, CA 94590  
(email)

#### **June 4, 2011 Email**

Dear Supervisors,

Thank you for the opportunity to provide input on the issue of redistricting of Vallejo, these potential changes are crucial to Vallejo's future.

I start out by asking you to support Alternative B.

The goal of this process is to make the districts as equal and compact as possible. District 1 is the County's poorest district. By changing the district boundaries as indicated in Alternative A, and especially C, would further concentrate the poverty in District 1. As a Vallejo resident I can say that this would hurt many communities of interest in our city. We need a diversity of people in our County districts, reflecting the wide scope of our socio-economic and racial make-up.

Thank you  
Wendell Quigley Mare Island Ca  
(email)

#### **June 5, 2011 Email**

Dear Representatives:

The redistricting issues have been brought to my attention recently and I'm writing this letter as a voter and resident of Solano County. I feel the fairest and best option is OPTION B since this will provide the best possible outcome.

I feel strongly about this issue and the effect it may have on me and my neighbors. Please do what is right and in the best interests of all the voters of this county by placing your support on OPTION B.

Most sincerely,

Collette Sweeney  
Teacher  
(email)

### **June 7, 2011 Board of Supervisors Meeting**

Redistricting public comments from the June 7, 2011 Board of Supervisors Meeting, were received from the following:

Gary Falati

June Guidotti

George Guynn Jr.

Comments can be found at the Solano County Board of Supervisors Agendas Minutes and Videos website as Redistricting Agenda item 27

[http://solano.granicus.com/MediaPlayer.php?view\\_id=8&clip\\_id=597](http://solano.granicus.com/MediaPlayer.php?view_id=8&clip_id=597)

### **June 10, 2011 Email**

Good Morning Lindsay and Birgitta,

Thank you for your assistance yesterday in locating the redistricting maps and entertaining my discussion points.

The large maps in the Registrar of Voters Department are helpful to understand the scope of the Alternate Scenarios and the challenges faced in making the final decision. Your efforts to introduce redistricting, the 3 Scenarios presented and to gather public input are appreciated.

After further study of the Alternate Scenarios, I am concerned about how specifically the City of Vallejo and the associated community of interests are represented. My observation is that most of Vallejo should be represented by District 1 and it should include upper Green Valley at the very least.

Specifically, District 1 should include most of the City of Vallejo including Mare Island and Hiddenbrooke which is currently not the case. Alternate Scenario B, is the only option that picks up both of these Vallejo communities.

Including Upper Green Valley in District 1 addresses the concept of Community of Interest. "Community of Interest" is defined on the CA Legislative Analysts Office website as "a contiguous population which shares common social and economic interests that should be included within a single district for purposes of its effective and fair representation."

One could argue that a Community of Interest exists between the City of Vallejo and Upper Green Valley. For instance, Upper Green Valley residents have been water customers of the City of Vallejo, through the City owned watershed located there, for over 100 years. That is not likely to change in the foreseeable future. Furthermore many residents in Upper Green Valley have economic ties to the City of Vallejo. Vallejo businesses, commercial and residential

property ownership can be associated with several Green Valley residents indicating social and economic interests are not as dissimilar as one might assume.

I would offer that District 1 and 2 boundaries should run along Interstate 80 with District 1 picking up Hiddenbrooke and District 2 picking up Lower/Middle Green Valley as a starting point. Linking Upper Green Valley, Mare Island and Hiddenbrooke to District 1 creates fair representation for a diverse yet related community of interest.

Until County population growth occurs and Supervisorial Districts align with City limits, Vallejo will continue to be divided on the Board and in it's representation.

Thank you again for allowing the public comment on the proposed redistricting.

Erin Hannigan  
(email)

### **June 13, 2011 Community Workshop in Vacaville**

#### **Comment Cards Received**

(Scenario A) I don't like the way Districts 1 & 2 are split. Make a change to Vallejo District – *Anon*

(Scenario A) District 2 area north of Hwy 80 should be moved to District 1 – District 1 needs more rural area – *Anon*

(Scenario A) Move Dixon into District 4 and keep south Vacaville together – *Peggy Rollins*

(Scenario A) This scenario splits Green Valley and takes Mare Island out of District 1. Mare Island has had a strong identity to District 1 – *Michelle Coleman*

(Scenario A) Include area north of I-80 into District one. District one needs more rural – *Manuel Lopes*

(Scenario A) District 1 should include some non-incorporated area of the county – *Gary Falati*

(Scenario A) Dixon [should be] in 4<sup>th</sup>; FF out of 4<sup>th</sup> and [put] in 5<sup>th</sup>; [keep] Suisun in 3<sup>rd</sup> – *Anon*

(Scenario B) Although I do not appreciate the fact that I am not able to access Alternative Scenarios D & E with regards to advance impact to the Dixon Hispanic population I am inclined to favor Alternative Scenario B for the following reasons:

1. It will have minimum impact on Hispanic population with regards to District 5
2. Also it keeps Mare Island together
3. I am very concerned that both libraries (VPL) are in the same district.
4. The Board of Supervisors needs to allocate more funds to reach out to Vacaville and smaller communities as well as the Hispanic groups. – *Roberto V. Jr.*

(Scenario B) Of the Maps A, B and C I prefer #B. I would hope that large size maps D & E be posted in Vacaville and the other cities and if possible hold additional hearings – they were very helpful. Thanks – *[cannot decipher name]*

(Scenario B) Should move small pocket of District #4 north of TAFB into District 5 – *Peggy Rollins*

(Scenario B) This scenario keeps the community of interest in Green Valley whole. This scenario is the best of the three A, B & C - *Michelle Coleman*

(Scenario B) Dixon in 4<sup>th</sup>; FF out of 4<sup>th</sup>, in 5<sup>th</sup>; Suisun Valley in 3<sup>rd</sup> – *Anon*

(Scenario B) District 2 north of Hwy 80 should be moved to District 1. District 1 needs more rural and less urban – *Anon*

(Scenario B) Please try to connect the cities together near the center of the map – there are 3 districts that appear to included Lawler Ranch (5<sup>th</sup> District), Travis AFB (District 3) and TAFB Housing and all three of these areas are within a 4 mile radius. To me that's more political than people-effective. Thanks – *R. Chousis [sp of last name?]*

(Scenario B) District one should include area north of 80; more rural less urban – *Manuel Lopes*

(Scenario C) Dixon in 4<sup>th</sup>; FF out of 4<sup>th</sup>, in 5<sup>th</sup>; Suisun Valley in 3<sup>rd</sup> - *Anon*

(Scenario C) Move Suisun into District #3. We want public hearings on maps D & E – *Peggy Rollins*

(Scenario C) This is the worst scenario for Fairfield and Suisun. There should be another scenario that takes Suisun completely out of District 5 and puts it into District 3 – *Michelle Coleman*

(Scenario C) District 1 needs more rural and less urban. Area north of Hwy 80 should be moved to District 1 – *Anon*

(Scenario C) More public hearings with additional alternatives. Alternatives D&E need to have input – *Anon*

(Scenario C) Include area north of 80 into District one. Balance more rural and less urban – *Manuel Lopes*

### **June 13, 2011 Email**

There's a rumor the board is thinking about splitting Dixon between two districts.

I can tell you that will NOT set well with anyone up here. In fact it would be resented.

My view is that Suisun City should be consolidated into one district, and that district 5 should extend to the hill crests west of Allendale. That whole area is in the Dixon School District, Library District, Fire District and I believe SID district. The kids are in the same FFA and 4-H clubs as Dixon kids.

That commonality of interest is important.

The Pleasants Valley rural area should stay in the 4th - because that area is more connected to Vacaville. Dave (via email)

**June 14, 2011 Board of Supervisors Meeting**

Redistricting public comments from the June 14, 2011 Board of Supervisors Meeting, were received from the following:

Michelle Coleman

Donald R. Tipton

George Guynn Jr

Comments can be found at the Solano County Board of Supervisors Agendas Minutes and Videos website as Redistricting Agenda item 21

[http://solano.granicus.com/MediaPlayer.php?view\\_id=8&clip\\_id=598](http://solano.granicus.com/MediaPlayer.php?view_id=8&clip_id=598)

**June 14, 2011 Emails**

Mike Reagan, Chair  
Solano County Board of Supervisors  
675 Texas Street, Room 6500  
Fairfield, CA 94533

Re: potential Redistricting in Fairfield

Dear Supervisor Reagan:

I fully appreciate the challenges of preparing and approving a redistricting option. Fairfield, being in the center of Solano County, is currently split among three (3) supervisorial districts. While I appreciate the representation we receive, I would not want our community split any more among the districts. Therefore, I urge you to consider options that split Fairfield into no more than the current three (3) supervisorial districts. I recognize that the exact boundaries of each district will change, but I do not want the community to be divided among any more districts. Thank you for considering my position on this issue.

Very truly yours,  
Harry Price, Mayor  
(email)

**June 15, 2011 Emails**

Dear Chairman Reagan & Supervisors,

We reside at 770 Fallen Leaf Ct in the Green Valley Lakes Community and have talked with different neighbors throughout our community. The response has been over whelming that we wish to remain in supervisorial district 3, where we have been for the past decade. We identify with the City of Fairfield vs. the cities of Vallejo and Benicia.

Thank you for your consideration to remain in district 3 for the next decade.

Respectfully,  
Gary & Tracie Falati

(email)

Chairman Mike Reagan &  
Board of Supervisors  
675 Texas Street, Suite 6500  
Fairfield, CA 94533

Dear Chairman Reagan & Board of Supervisors,

On behalf of many grape growers and other farming families in Suisun Valley, we are requesting that Suisun Valley remain in district 3. We feel that the issues and concerns of our valley will be better served by the City of Fairfield (which is adjacent to Suisun Valley) than the cities of Benicia or Vallejo.

With the recent approval of the Suisun Valley Strategic Plan, Suisun Valley is entering a critical era that will determine the future of agriculture for our valley. We are very pleased with the work that Supervisor Spering has done for Suisun Valley and are confident that his predecessor from district 3 will also be committed to the plan that has been put in place. Thank you for your continued support of our agriculture community.

Respectfully Submitted,  
Ron Lanza  
Vice President  
Wooden Valley Winery  
(email)

**June 16, 2011 Email**

Chairman Mike Reagan & Board of  
Supervisors 675 Texas Street, Suite 6500  
Fairfield, CA. 94533

**RE: Remain in District3**

Chairman Reagan:

As a decades long property owner in **District 3**, I would like to express the wish of mine and many others that we remain a part of **District 3**.

The notion that Suisun Valley and Rockville would be better served and have issues more in alignment with the cities of Vallejo and Benicia is misguided at best.

Regards,  
Bob Runkel  
(email)



## June 20, 2011 Emails

Dear Supervisor Reagan,

I am a resident of the Green Valley Lake subdivision and a board member of the Green Valley Lake Homeowner's Association. I recently learned about the redistricting proposals being considered for our area and have spoken too many of my neighbors about this issue.

We wish to remain in District 3 and feel that we are much better represented by Supervisor Jim Spring and the City of Fairfield than the cities of Vallejo and Benicia.

Sincerely,  
Jay Zelek  
(email)

As a Vallejo Resident, I prefer Alternative B

Please, **support Alternative B.**

The goal of this process is to make the districts as equal and compact as possible. District 1 is the County's poorest district. By changing the district boundaries as indicated in Alternatives A, and especially C, you would be further concentrating the poverty into District 1. Living in and representing Vallejo residents, I can say that this would hurt many communities of interest in our city. We need a diversity of people in our County districts, reflecting the wide breadth of our socio-economic and racial make-up.

While not perfect, **Alternative B is the best of the three alternatives**, and provides for a more balanced socio-economic District that would be more fair and best serve the many communities of interest in Vallejo. It would also ensure that a broad swath of Vallejo would be represented by somebody who lives in and best knows Vallejo -- which is important to those of us who live here.

Alternative A: not good

Alternative B: maintain Hiddenbrooke in D-1 and put Sandy Beach and Mare Island into D-1 (currently D-2), best alternative

Alternative C: worst of the three, not fair, a disservice to the communities of interest in Vallejo  
Thanks Stephen J. Branch Sr. Vallejo resident  
(email)

## June 21, 2011 Board of Supervisors Meeting

Redistricting Public Comments from the June 21, 2011 Board of Supervisors Meeting, were received from the following:

Donald R. Tipton

George Guynn Jr.

Comments can be found at the Solano County Board of Supervisors Agendas Minutes and Videos website as Redistricting Agenda item 6

[http://solano.granicus.com/MediaPlayer.php?view\\_id=8&clip\\_id=600](http://solano.granicus.com/MediaPlayer.php?view_id=8&clip_id=600)

**June 21, 2011 Board of Supervisors Meeting (continued)**

**(Hand Delivered)**

Solano County Board of Supervisors  
675 Texas Street, Room 6500  
Fairfield, CA 94533

Dear Supervisors,

I endorse the attached proposed redistricting map for the Solano County Board of Supervisors which reflects a more equitable distribution of representation for Southern Solano County.

John Silva  
Michael Wilson  
Pierre Bidou  
Bill Whitney  
(Map was attached separately and is on file at the Clerk of the Board)

Comments on the map can be found at  
[http://solano.granicus.com/MediaPlayer.php?view\\_id=8&clip\\_id=600](http://solano.granicus.com/MediaPlayer.php?view_id=8&clip_id=600)

**June 28, 2011 Board of Supervisors Meeting**

Redistricting Public Comments from the June 28, 2011 Board of Supervisors Meeting, were received from the following:

Donald R. Tipton

Don Fulton

Dennis E. Allen

George Guynn Jr.

Michelle Coleman

Monica Brown

MJ Cermello

Jack Batchelor Jr.

Comments can be found at the Solano County Board of Supervisors Agendas Minutes and Videos website as Redistricting Agenda item 34

[http://solano.granicus.com/MediaPlayer.php?view\\_id=8&clip\\_id=602](http://solano.granicus.com/MediaPlayer.php?view_id=8&clip_id=602)

**June 28, 2011 Board of Supervisors Meeting (continued)**

**(Hand Delivered)**

Supervisor John M. Vasquez  
Suite 6500, 675 Texas  
Fairfield, CA 94533

Dear Mr. Vasquez,

The members of the Solano County Taxpayers Association have watched with much interest – and more than a little dismay – Board handling of the realignment of Supervisors districts. It has been clear from the beginning that the interests of Board members, not the interest of the public, have driven the process.

The first clue was that the Board members were interviewed by the consultants prior to any “public input” forums. Then, those attending the forums were given the clear indication the public’s input was nothing more than a formality.

That impression was strengthened by the Board’s rejection of the three original maps and the two alternatives prepared after the public forums. Instead, the Board insisted on new lines which the public perceived as clearly motivated by the interest of the Board members themselves. Calling the lines you propose the “Preferred Map” is further evidence to that effect.

In response to your actions, the Solano County Taxpayers Association at their last meeting voted unanimously to develop an initiative to establish a Citizens’ Redistricting Committee to take the power to draw Supervisorial District lines out of the hands of politicians.

We are aware there are many hurdles to accomplish this goal, however, you should note the voters in Solano County have consistently and strongly supported similar commissions for state and congressional redistricting. Our voters have likewise strongly supported term limits – which may be another alternative available to the voters.

We understand that you have until November first to adopt new district lines. With that in mind, we urge you to reconsider your intent to adopt your “preferred map” and come up with a better proposal. Or a better alternative that would dispel the public perception of personal favoritism, allow the matter to go to the committee established by statute composed of the District Attorney, the County Assessor, and the Superintendent of Schools.

Respectfully

Early Heal

President, Solano County Taxpayers Association

**July 6, 2011 Board of Supervisors Meeting**

Redistricting Public Comments from the July 6, 2011 Board of Supervisors Meeting, were received from the following:

Donald R. Tipton

Gary Falati

George Guynn Jr.

Gary Archer

June Guidotti

Dennis E. Allen

Monica Brown

Roberto Valdez

Michelle Coleman

Michael J Cermello

Comments can be found at the Solano County Board of Supervisors Agendas Minutes and Videos website as Redistricting Agenda item 1

[http://solano.granicus.com/MediaPlayer.php?view\\_id=8&clip\\_id=603](http://solano.granicus.com/MediaPlayer.php?view_id=8&clip_id=603)

**July 25, 2011 Received through Regular Mail**

**THE HOME ACRES IMPROVEMENT ASSOCIATION, INC.**

July 15, 2011

Solano County Board of Supervisors  
Board Chair: Michael Reagan  
675 Texas Street, St. 6500  
Fairfield, CA. 94533

Board of Supervisors:

Home Acres Association is not being directly represented by the Supervisor Barbara Kondylis from District #1.

**We Voted for Supervisor Linda Seifert District #2** to represent the Unincorporated Area of District #2.

We expect Supervisor Linda Seifert to be working on our behalf, if not then the Board of Supervisor's should appoint someone who lives in District #2 to see that our concerns and needs in the unincorporated area of Vallejo are being addressed. Would appreciate your attention on this matter and look forward to hearing from you soon.

Cal Mc Murphy  
President  
1217 Lewis Avenue  
Vallejo, CA. 94591-8005

### **July 26, 2011 Board of Supervisors Meeting**

Redistricting Public Comments from the July 6, 2011 Board of Supervisors Meeting, were received from the following:

Donald R. Tipton

George Guynn Jr.

Comments can be found at the Solano County Board of Supervisors Agendas Minutes and Videos website as Redistricting Agenda item 29

[http://solano.granicus.com/MediaPlayer.php?view\\_id=8&clip\\_id=606](http://solano.granicus.com/MediaPlayer.php?view_id=8&clip_id=606)

### **July 26, 2011 Board of Supervisors Meeting (Hand Delivered)**

Central Solano Citizen/Tax payer Group

Post Office Box 3532  
Fairfield, CA. 94533  
[www. TheTaxwatchers.org](http://www.TheTaxwatchers.org)

July 26, 2011

Solano County Board of Supervisors  
675 Texas Street, Suite 6500  
Fairfield, California 94533  
Re: Resolution against BOS Gerrymandering Plan

Whereas, the Solano County Board of Supervisors have consistently ignored the pleas of members of the Central Solano Citizen/Taxpayer Group not to gerrymander the county and seem to be adamant about their own "preferred plan" .

Whereas this BOS has completely ignored 4 other very valid and equally fair redistricting proposals brought to them by a consultant who was paid over \$100,000.

Whereas this BOS have completely pre-empted the will of the people who were involved in the process of four different proposals through weeks of meetings in various cities in Solano County.

And whereas as citizen taxpayers who feel un-represented in this process and usually ignored when we bring legitimate concerns and redresses before this Board of Supervisors .

We therefore see the Board of Supervisors "preferred plan"

as gerrymandering because it takes the whole city of Dixon out of Mr. Reagan's district and places it -in Mr. Vasquez's district and in tum gives all of Travis Air Force Base to Mr. Reagan's district where he as a retired Lt. Col. will undoubtedly garner many votes for his re-election next November. We, therefore, are filing a full protest against the Board of Supervisors action in this matter.

Sincerely  
George Guynn, Jr.  
President  
Central Solano Citizen Taxpayer Group

### **August 2, 2011 Board of Supervisors Meeting**

Redistricting Public Comments from the August 2, 2011 Board of Supervisors Meeting, were received from the following:

Dennis E. Allen

Comments can be found at the Solano County Board of Supervisors Agendas Minutes and Videos website as Items from the Public

[http://solano.granicus.com/MediaPlayer.php?view\\_id=8&clip\\_id=609](http://solano.granicus.com/MediaPlayer.php?view_id=8&clip_id=609)