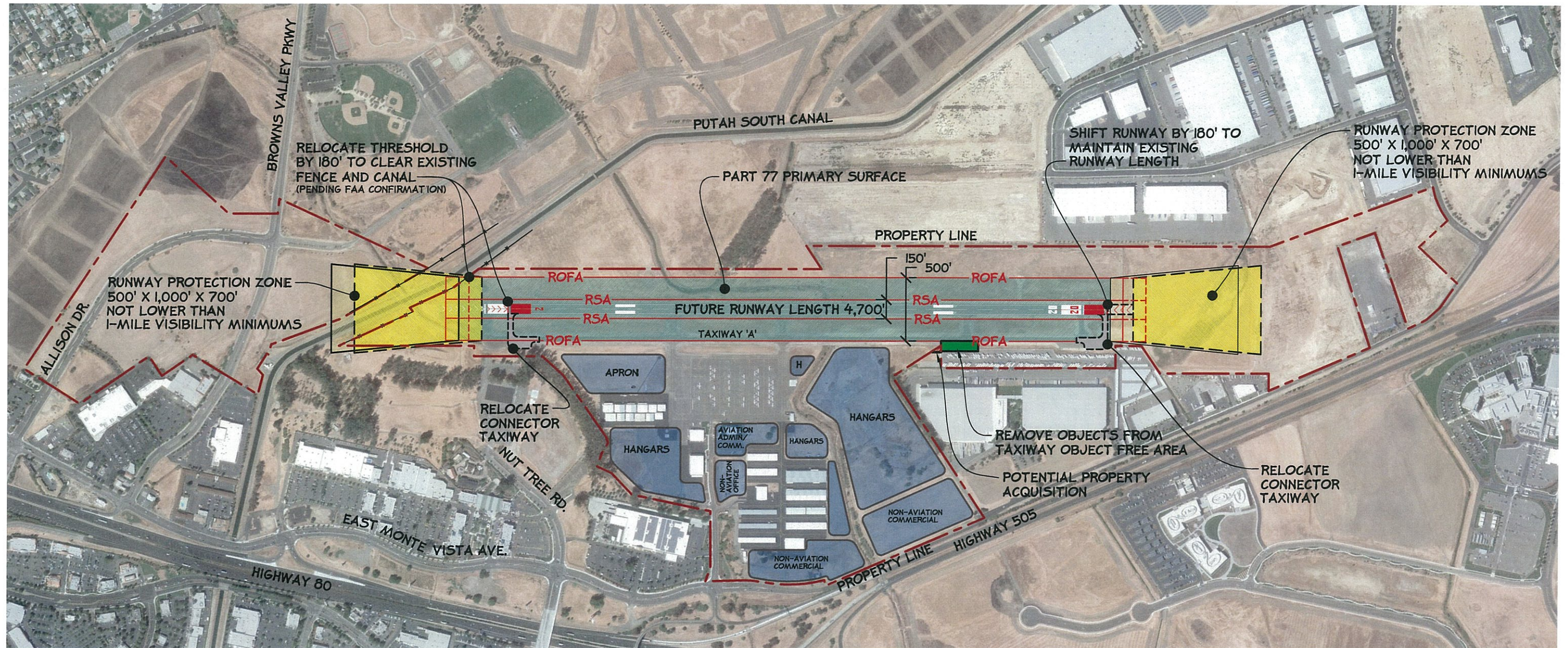


# PHASE I: 2014-2016

## RUNWAY **ALTERNATIVE 2** - SHIFT THE RUNWAY 180' NORTH FOR FAA COMPLIANCE



# PHASE II: RESERVE AREA (2030-2032)

RUNWAY **ALTERNATIVE 3** - SHIFT & RESERVE AREA FOR RUNWAY EXTENSION (LONG-TERM) TO 5,500'

