

# 2008 Solano County General Plan



## Solano County General Plan

Figure LU-1

### Land Use Diagram

#### Legend

##### General Plan Land Use Designations

##### Natural Resource Designations

- Water Bodies and Courses
- Park and Recreation
- Marsh

##### Agricultural Designations

- Watershed
- Agriculture

##### Public Designations

- Public/Quasi-Public

##### Residential Designations

- Rural Residential
- Traditional Community - Residential
- Traditional Community - Mixed Use
- Urban Residential, Urban Residential

##### Commercial Designations

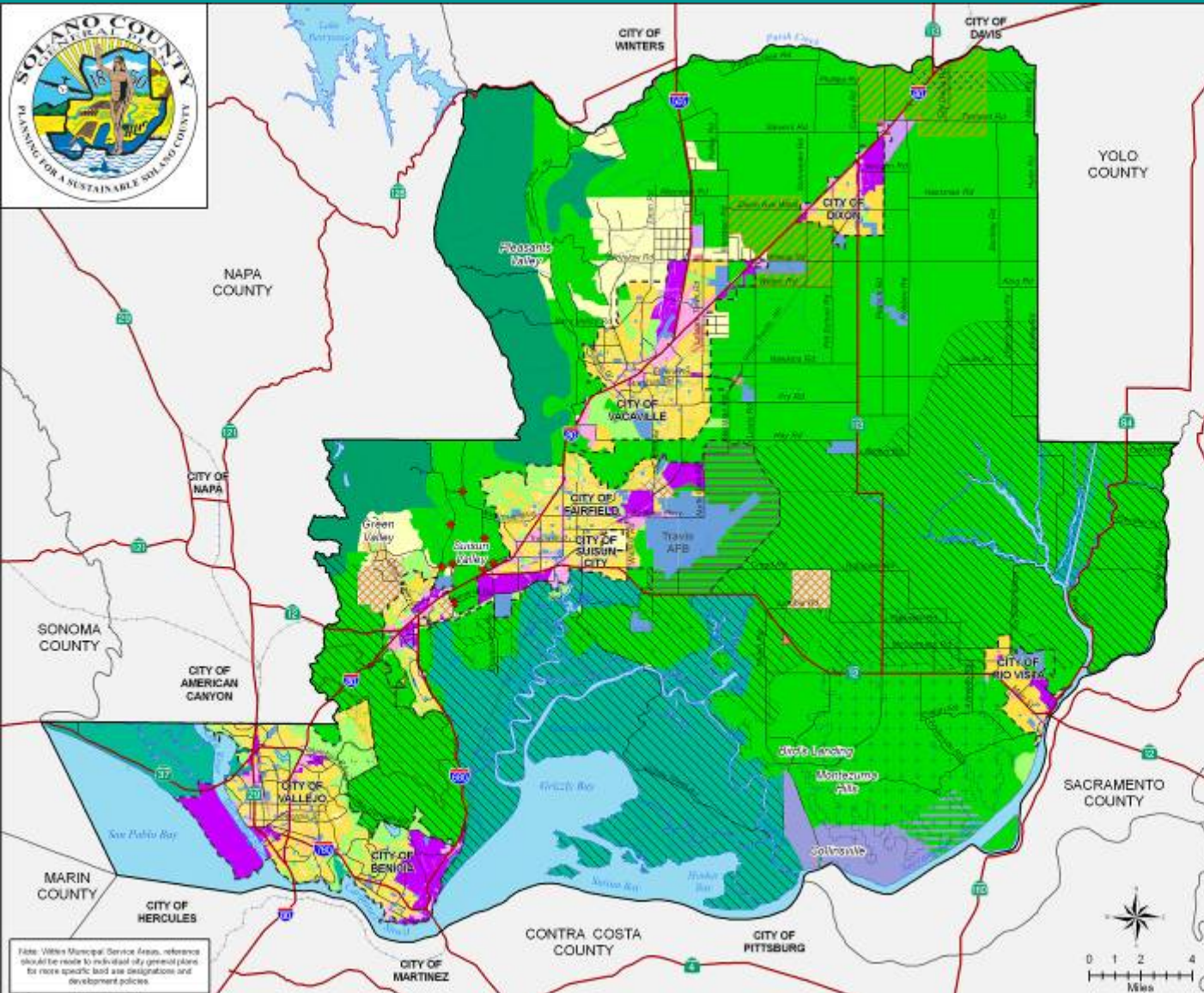
- Neighborhood Commercial
- Neighborhood Agricultural/Tourist Center
- Commercial Recreation
- Service Commercial
- Highway Commercial
- Urban Commercial

##### Industrial Designations

- General Industrial
- Limited Industrial
- Water Dependant Industrial
- Urban Industrial

##### Special Purpose Areas

- Specific Project Areas
- Water Dependant Industrial - Reserve
- Travis Reserve Area
- Wind Energy Resource Overlay
- Agricultural Reserve Overlay
- Tri-City/County Cooperative Planning Area
- Resource Conservation Overlay



Note: Within Municipal Service Areas, reference should be made to municipal city general plans for more specific land use designations and development policies.

"Planning for a Sustainable Solano County"

# General Plan Organization

- Chapter 1: Introduction
- Chapter 2: Land Use
- **Chapter 3: Agriculture**
- Chapter 4: Resources
- Chapter 5: Public Health & Safety
- Chapter 6: Economic Development
- Chapter 7: Transportation & Circulation
- Chapter 8: Public Facilities
- Chapter 9: Housing
- Chapter 10: Park & Recreation
- Chapter 11: Tri-City & County Cooperative Plan for Agriculture and Open Space Preservation

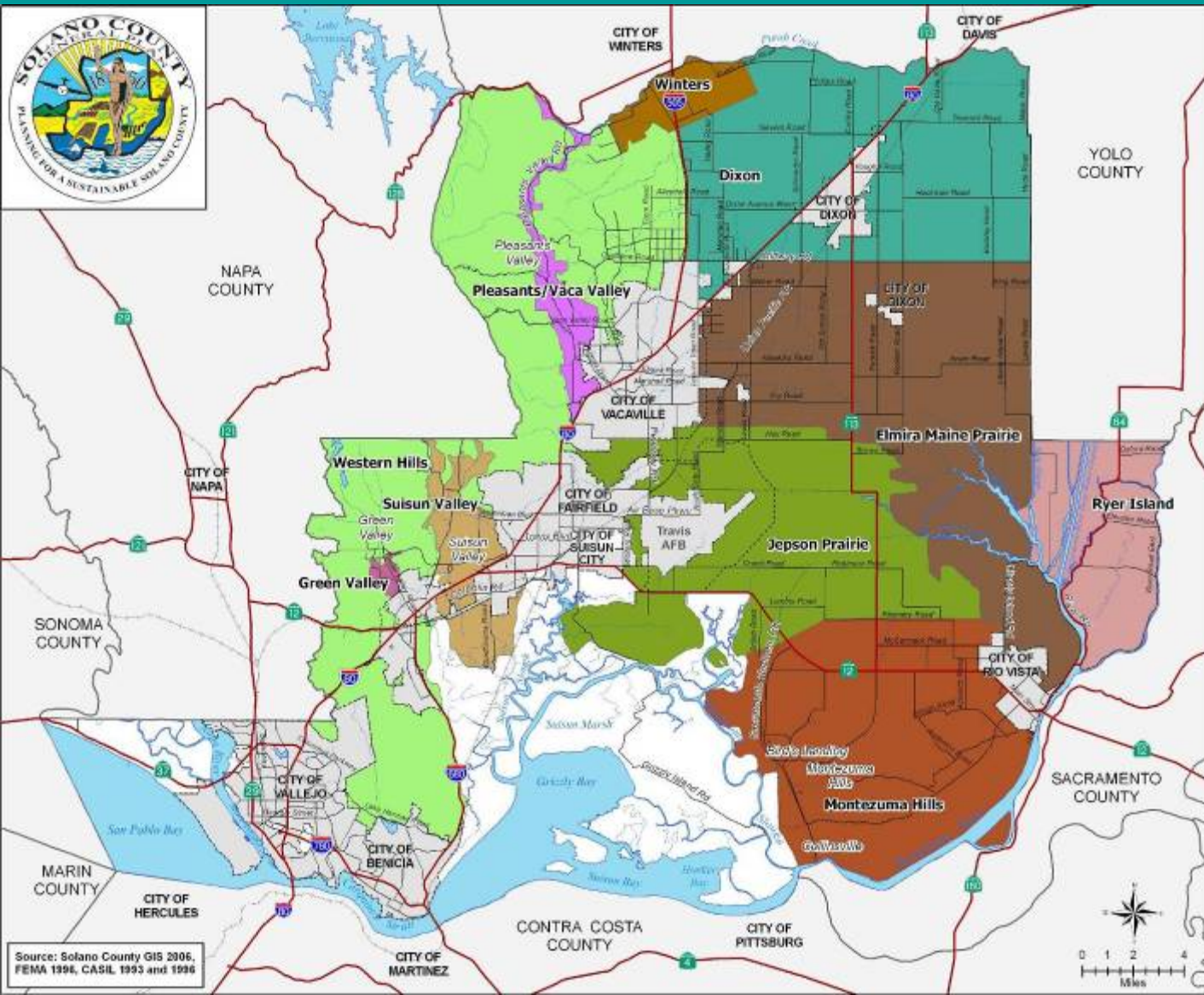




# Agricultural Regions



**Solano County General Plan**  
**Figure AG-3**  
**Agricultural Regions**



- Legend**
- Roadways
  - Highways
  - Railroads
  - Streams and Creeks
  - Major Water Features
  - Municipal Service Areas
  - Adjacent Counties
  - City Boundaries
- Agricultural Region**
- Dixon
  - Elmira Maine Prairie
  - Green Valley
  - Jepson Prairie
  - Montezuma Hills
  - Pleasants/Vaca Valley
  - Ryer Island
  - Suisun Valley
  - Western Hills
  - Winters

Source: Solano County GIS 2006, FEMA 1996, CASIL 1993 and 1996



"Planning for a Sustainable Solano County"

# Solano County General Plan Implementation

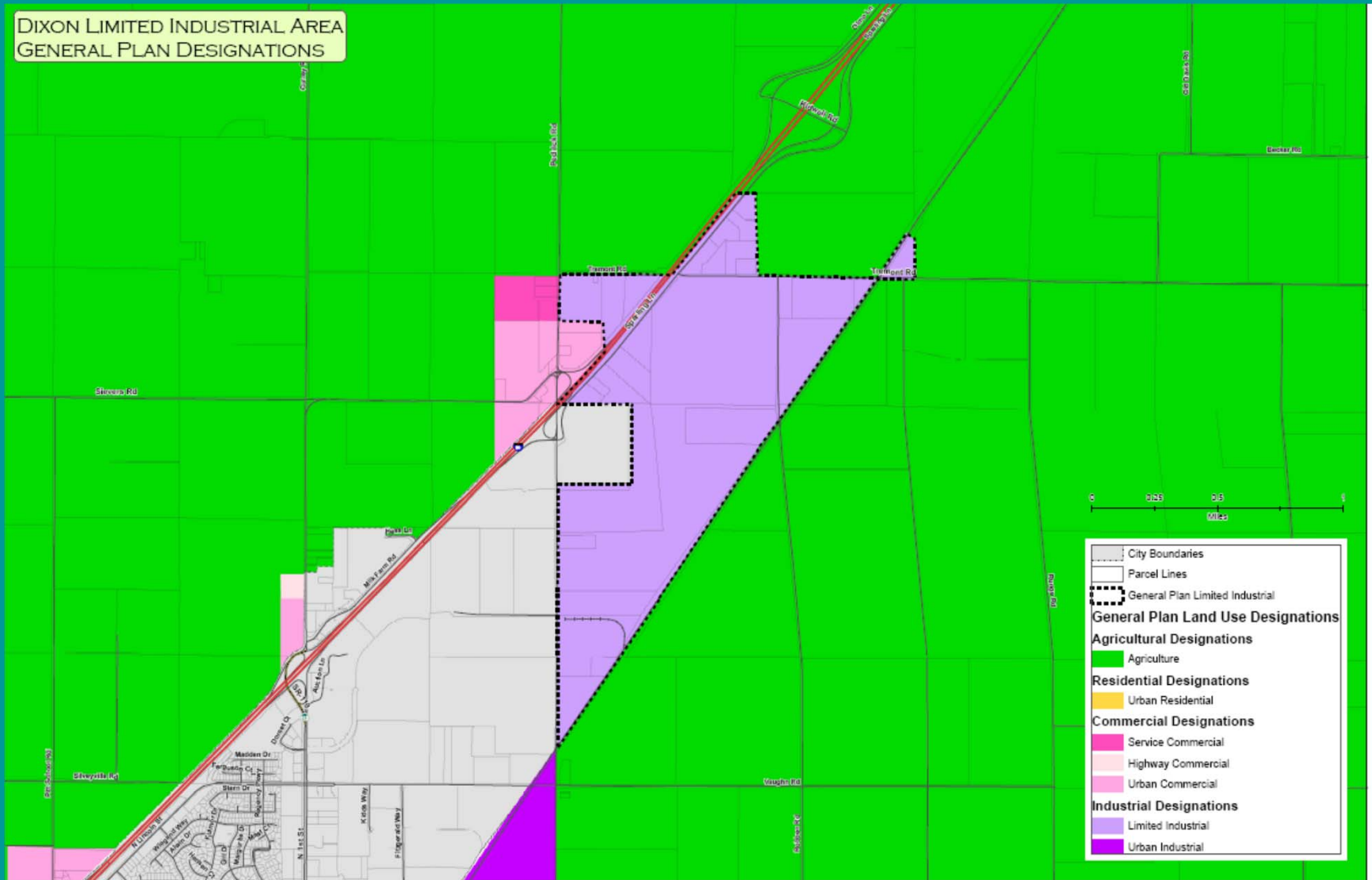
## *Dixon Ridge Agricultural Region Strategic Plan*

### **NE Dixon Agricultural Supporting Limited Industrial Area**

**Dixon City Council Chamber, November 16, 2011**



# NE Dixon Agricultural Supporting Limited Industrial Area



# Major Elements for Establishing the NE Dixon Agricultural Supporting Limited Industrial Area

- Design Standards, consistent with City of Dixon's Commercial & Industrial Standards
- Infrastructure Requirements & Limitations
- Zoning Standards for Agricultural Supporting Land Uses