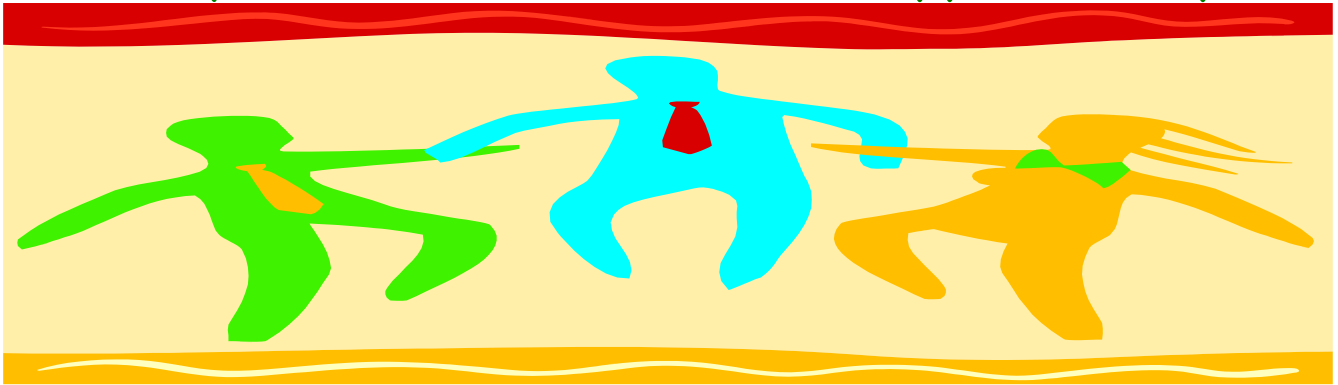


# Family Member / Loved Ones Support Group



Are you the family member or loved one of an individual with a mental health issue, or suspected of having a mental health or emotional problem? Do you need a place to go that is safe, supportive & non-judgmental? Would you like to speak with others who are sharing the same or similar experience? If so, please come join us!

2<sup>nd</sup> Monday of each month  
10:00a.m. to 12:00p.m.

Rio Vista Library  
44 South 2nd Street  
Rio Vista, CA 94571

For more information please contact:

Rachel E. Ford, Consumer Liaison  
Solano County Mental Health

707 - 553 - 5735 office

[reford@solanocounty.com](mailto:reford@solanocounty.com)