

WELCOME



HEALTHY SOLANO STEERING COMMITTEE

Solano County Administration Building
February 23, 2015



Healthy People – Healthy Community



Healthy Solano Steering Committee

Welcome and
Introductions



Healthy People – Healthy Community





Healthy Solano Steering Committee Meeting

Agenda

Date/Time: February 23, 2015 (2:00 PM – 5:00 PM)

Location: 675 Texas Street, Fairfield, CA, Room #1600

Meeting Purpose:

1. Promote communication and strategic planning for the Community Health Assessment, in an open and supportive forum.

Meeting Objectives:

1. Provide an overview of the “Mobilizing for Action through Planning and Partnerships (MAPP)” process.
2. Introduce the roles and responsibilities of participating on the Healthy Solano Steering Committee.
3. Provide a brief summary of Solano County assessment data.
4. Conduct Visioning process for the Healthy Solano Steering Committee.

Time	Discussion Topic	Facilitator
2:00 PM	Welcome and Introductions	Jayleen Richards
2:05 PM	Meeting Overview	Jayleen Richards
2:10 PM	Review MAPP Process	Meileen Acosta
2:40 PM	Break	
2:50 PM	Steering Committee Roles and Responsibilities	Meileen Acosta
3:05 PM	Review Health Assessment Data	Meileen Acosta Marijoyce Naguit
3:35 PM	Break	
3:45 PM	Visioning & Common Values <ul style="list-style-type: none"> • What is your vision for a Healthy Solano in 10 years? 	Beth Armentano
4:45 PM	Meeting Summary <ul style="list-style-type: none"> • Next Steps 	Jayleen Richards

275 Beek Avenue, P.O. Box 4090, MS 5-240, Fairfield, CA 94533-6804, *tel* 707 784 8600, *fax* 707 421 6618

PUBLIC HEALTH DIVISION



Health and Social Services Department

Agenda



Healthy People – Healthy Community



MOBILIZING for ACTION through PLANNING and PARTNERSHIPS (MAPP) introduction

**Meileen Acosta, MPH
MAPP Steering Committee Kick-Off
February 23, 2015**



Healthy People – Healthy Community



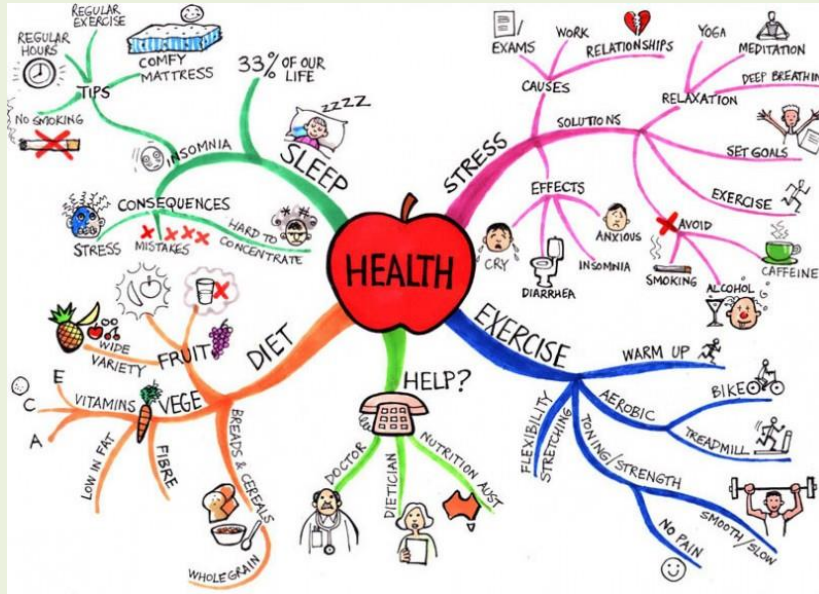
MAPP

Outline

- What is MAPP
- MAPP Framework
- MAPP Process
- MAPP Summary
- MAPP Steering Committee Roles and Responsibilities
- MAPP Timeline

What is health?

Health is...



...a dynamic state of complete **physical, mental, spiritual and social well-being** and not merely the absence of disease or infirmity. (WHO 1946)...

- Public health is “what we as a society do **collectively to assure the conditions** in which people can be healthy.” (IOM 1988)



Healthy Community

Developing a Healthy Community

Long-term endeavor

Well planned

Equitable

Grounded in experience



Inclusive

Integrated

Holistic

Community driven

Benefits community

Community supported



Healthy People – Healthy Community





Healthy People – Healthy Community



MAPP

Defined

- **Mobilizing:** Engaging community
- **Action:** Implementing health improvement plan
- **Planning:** Applying strategic planning concepts
- **Partnerships:** Involving local public health system and community partners

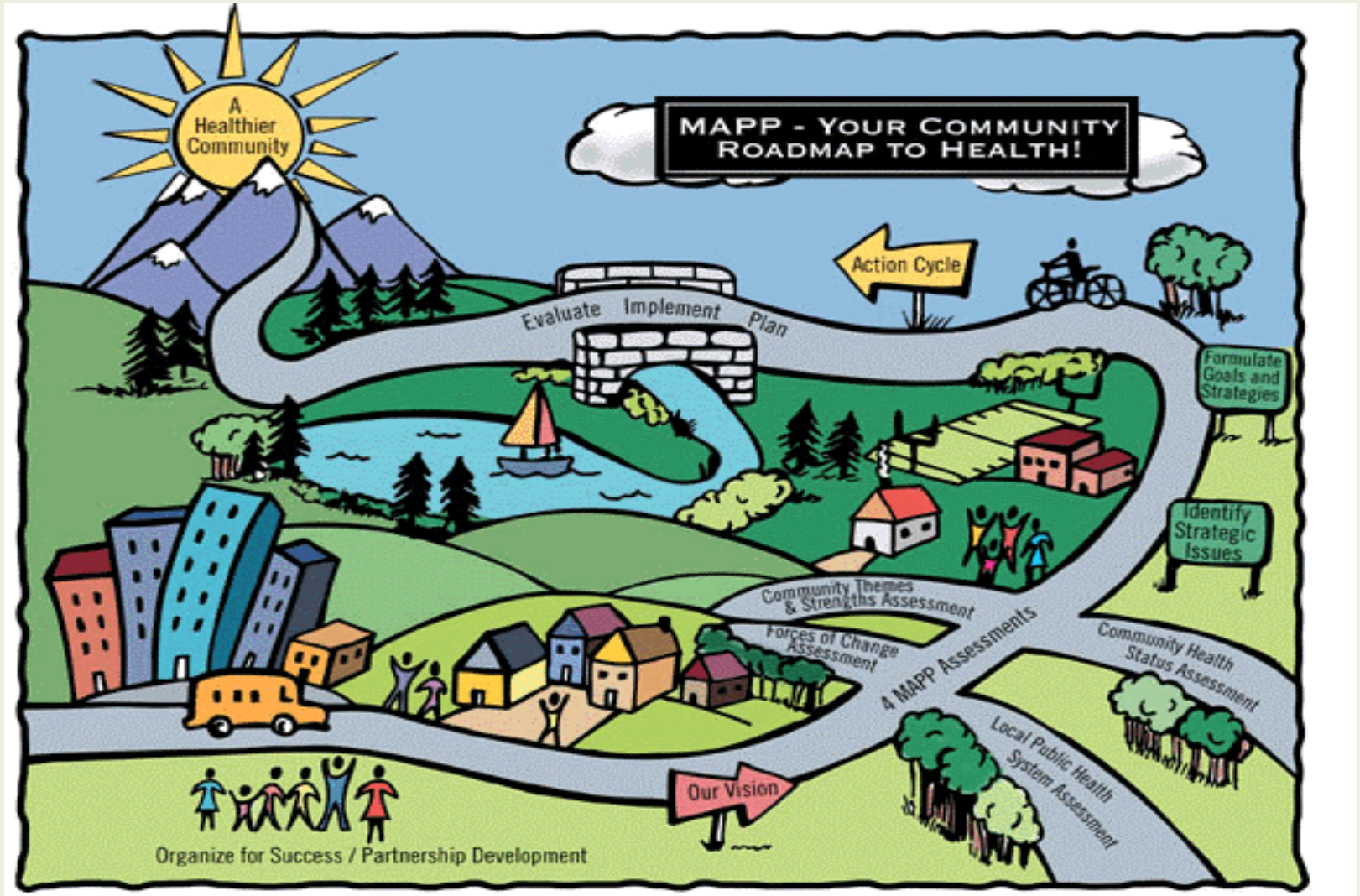
MAPP

Framework



MAPP

Roadmap





MAPP Phase 1

Organize for Success/
Partnership

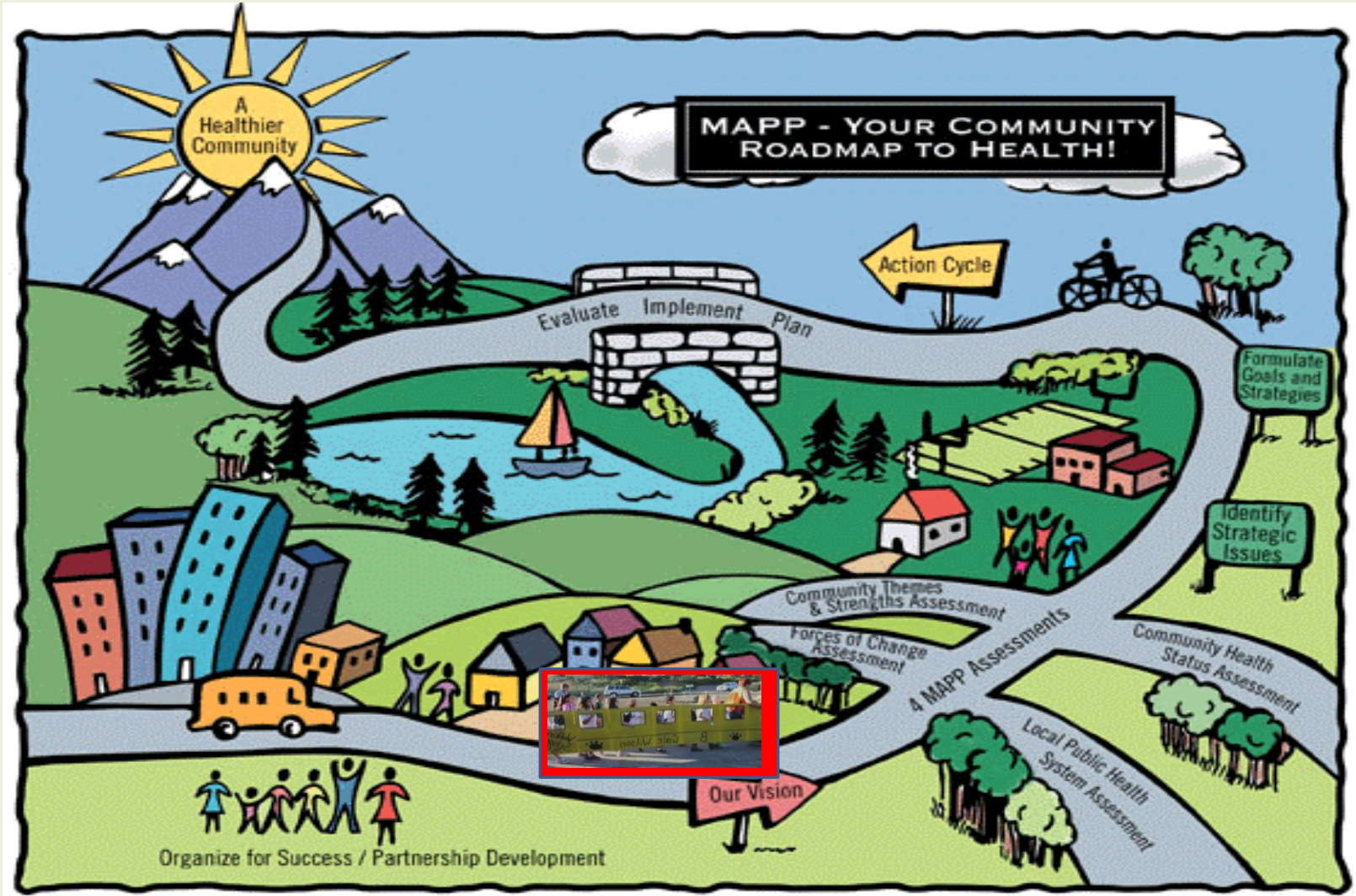


Healthy People – Healthy Community



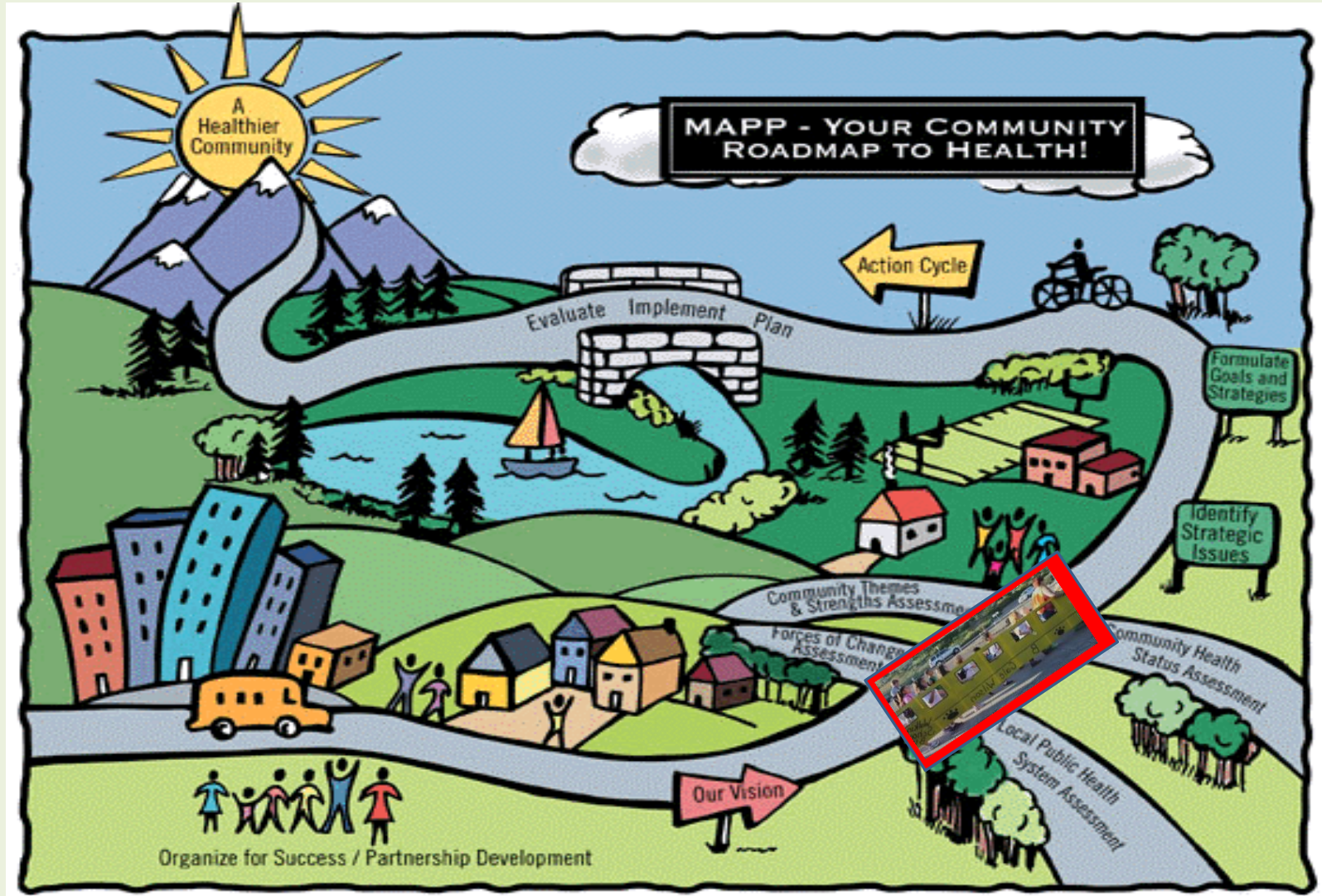
MAPP Phase 2

Visioning



MAPP Phase 3

Four Assessments



MAPP Phase 3

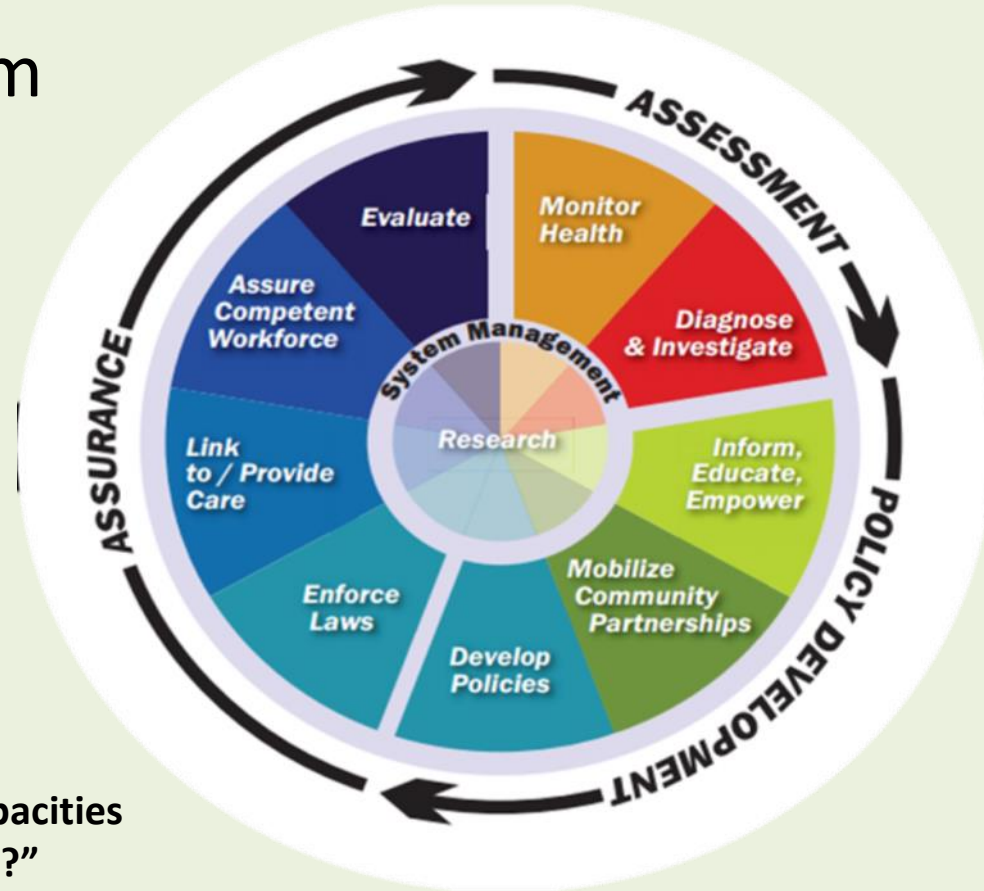
Forces of Change Assessment (FCA)

- Identifies **external forces** that will be **influencing** the **health** and **quality of life** of the community and the local public health system
- Often **broad issues** with **local impact**

Local Public Health System Assessment (LPHSA)

MAPP Phase 3

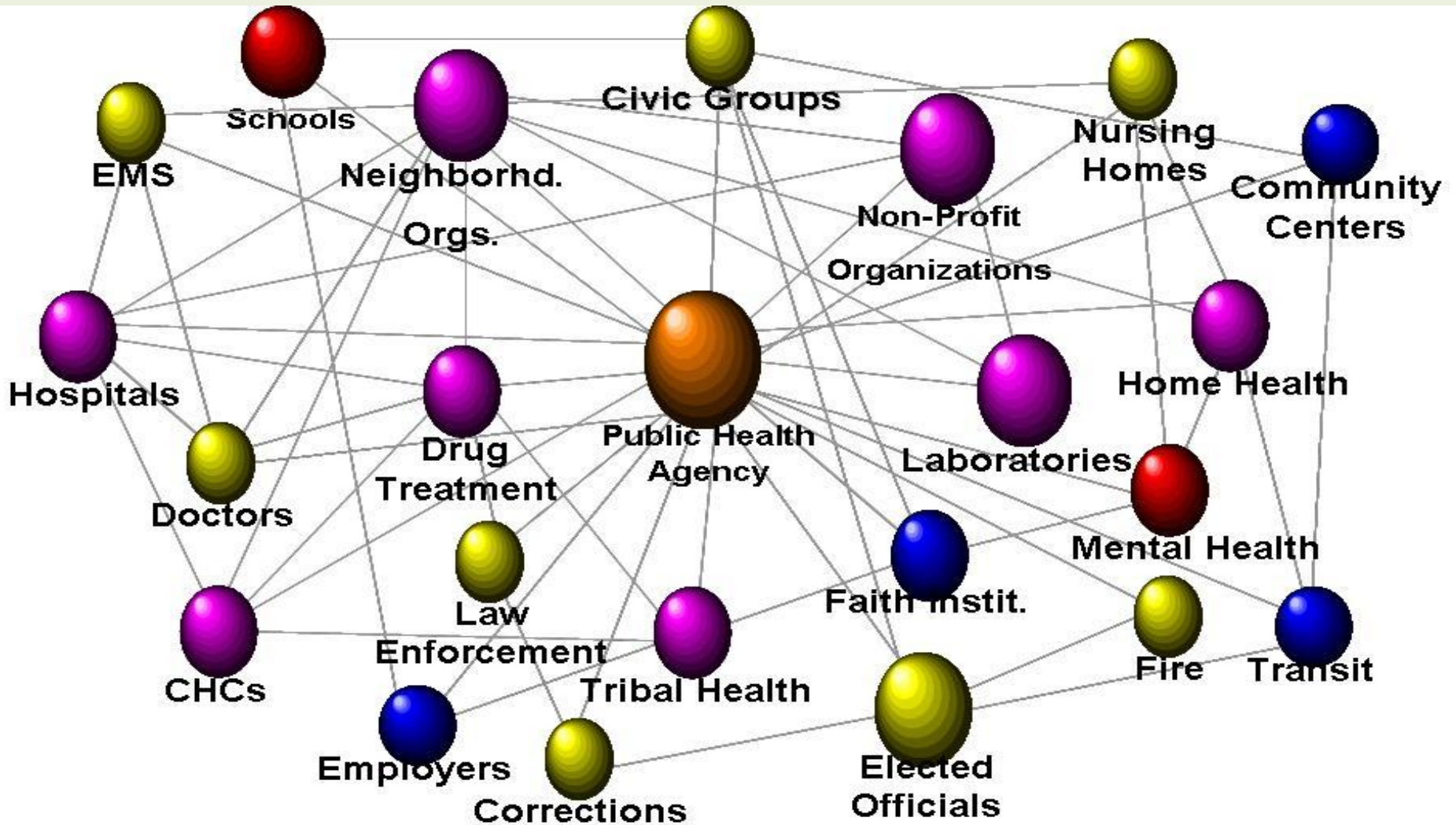
- Participation from all segments of public health system
- Based on 10 Essential Public Health Services



“What are the components, activities, competencies, and capacities of our local public health system?”

“How are the 10 Essential Services of public health being provided to our community?”

Public Health System



MAPP Phase 3

Community Themes and Strengths Assessment (CTSA)

- Deep understanding of **public health issues important to community**
- Identifies **themes** that interest and engage community
- Identifies community **assets**

Accomplished through:

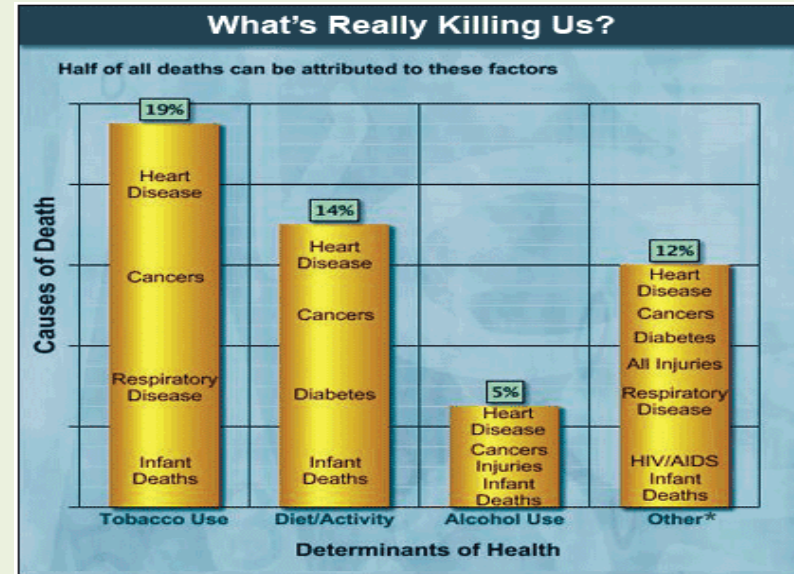
- Community health forums, surveys, meetings
- Local media may be useful



MAPP Phase 3

Analyzes data about:

- Health status
- Quality of life
- Risk factors



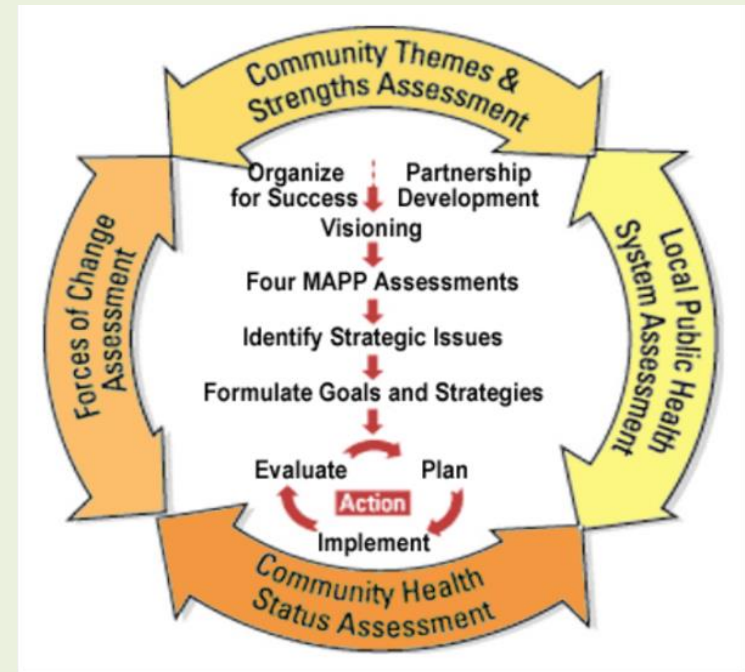
- Specific health issues are identified
- Establish a system to monitor the indicators over time



Collectively - the Four Assessments

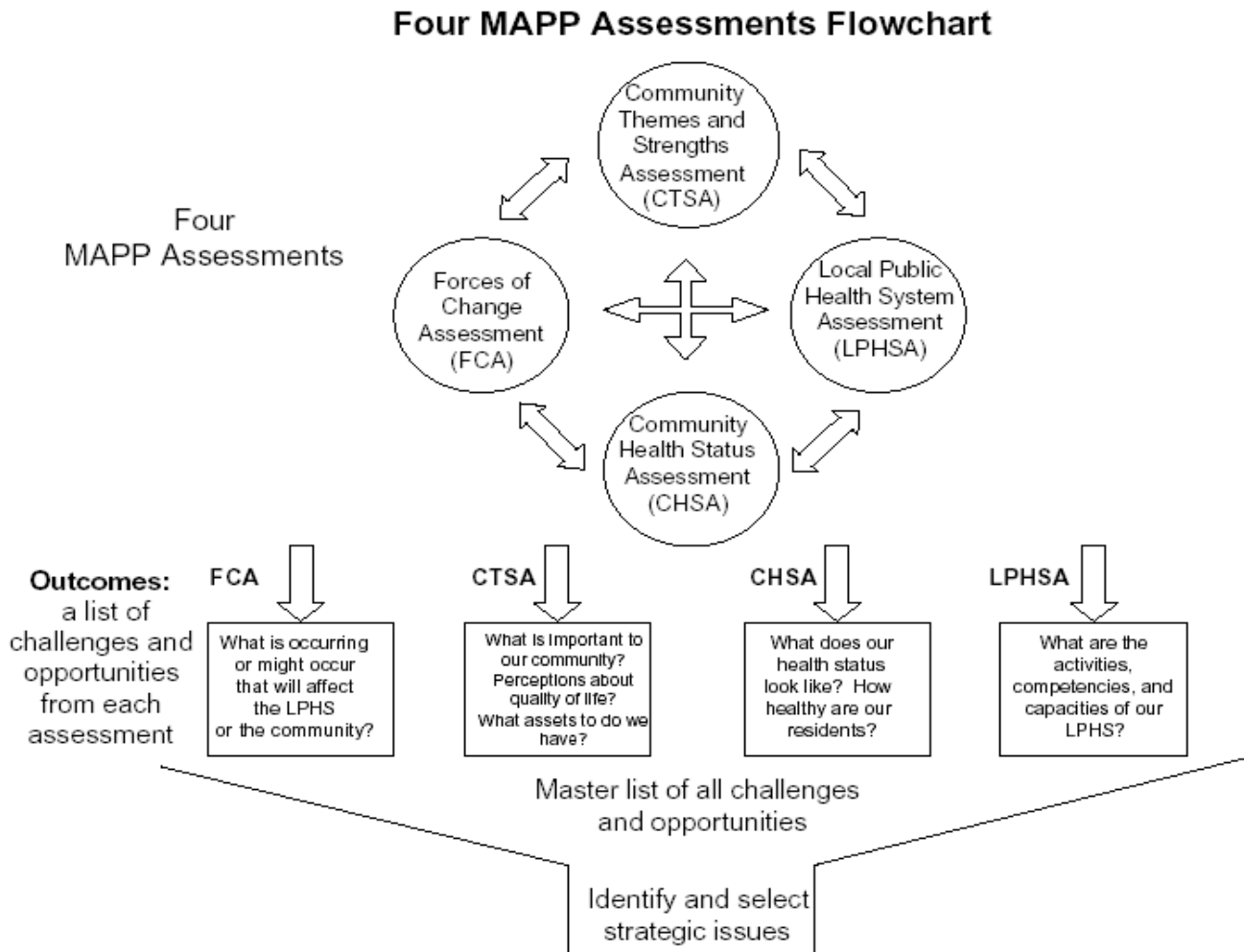
MAPP Phase 3

- Provide **insight** on the **gaps** between current circumstances and vision
- Source of information for **strategic issues, strategies, and goals**



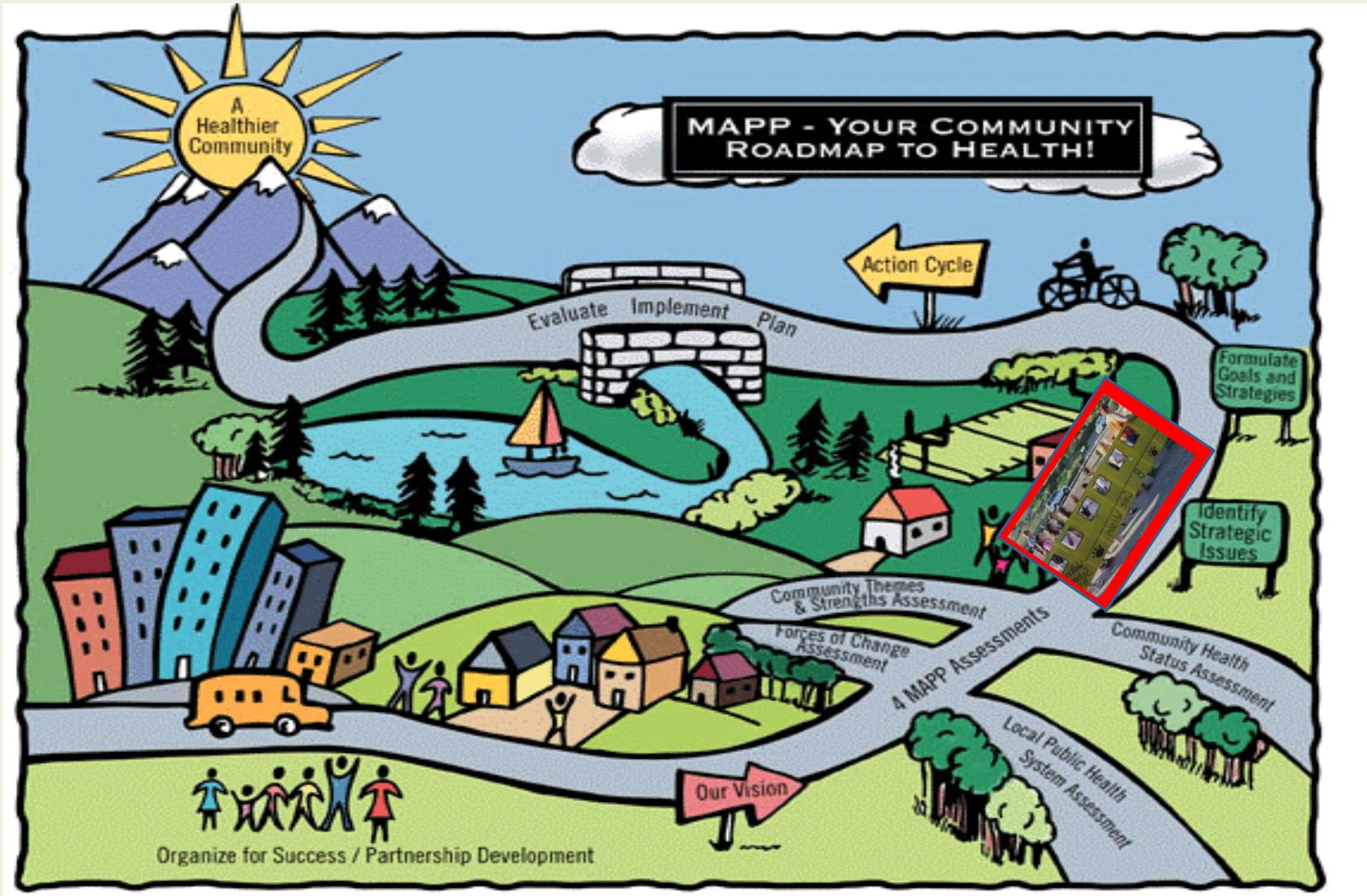
MAPP Phase 3

Four MAPP Assessment Flowchart



MAPP Phase 4

Identify Strategic Issues



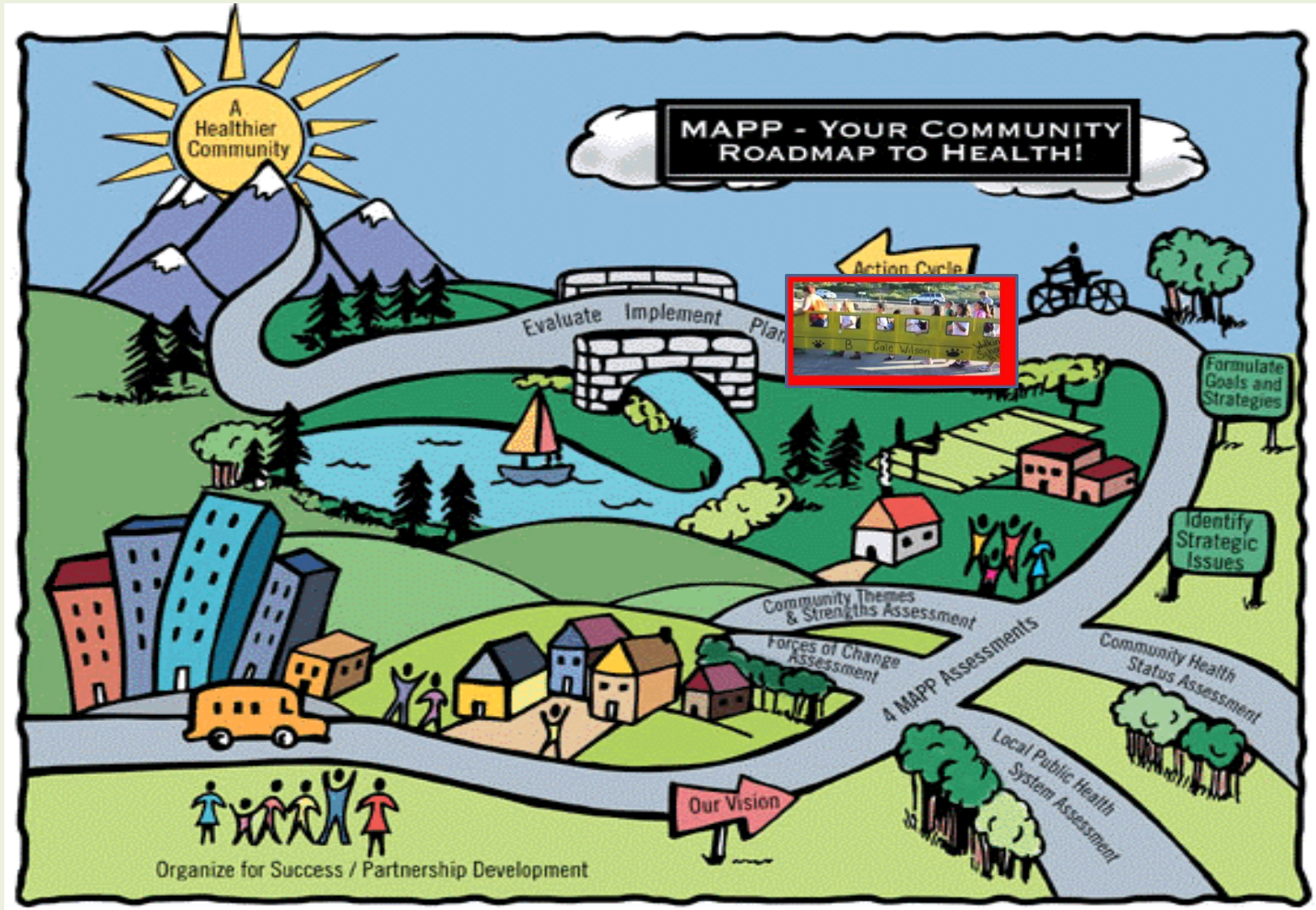
MAPP Phase 5

Formulate Goals and Strategies

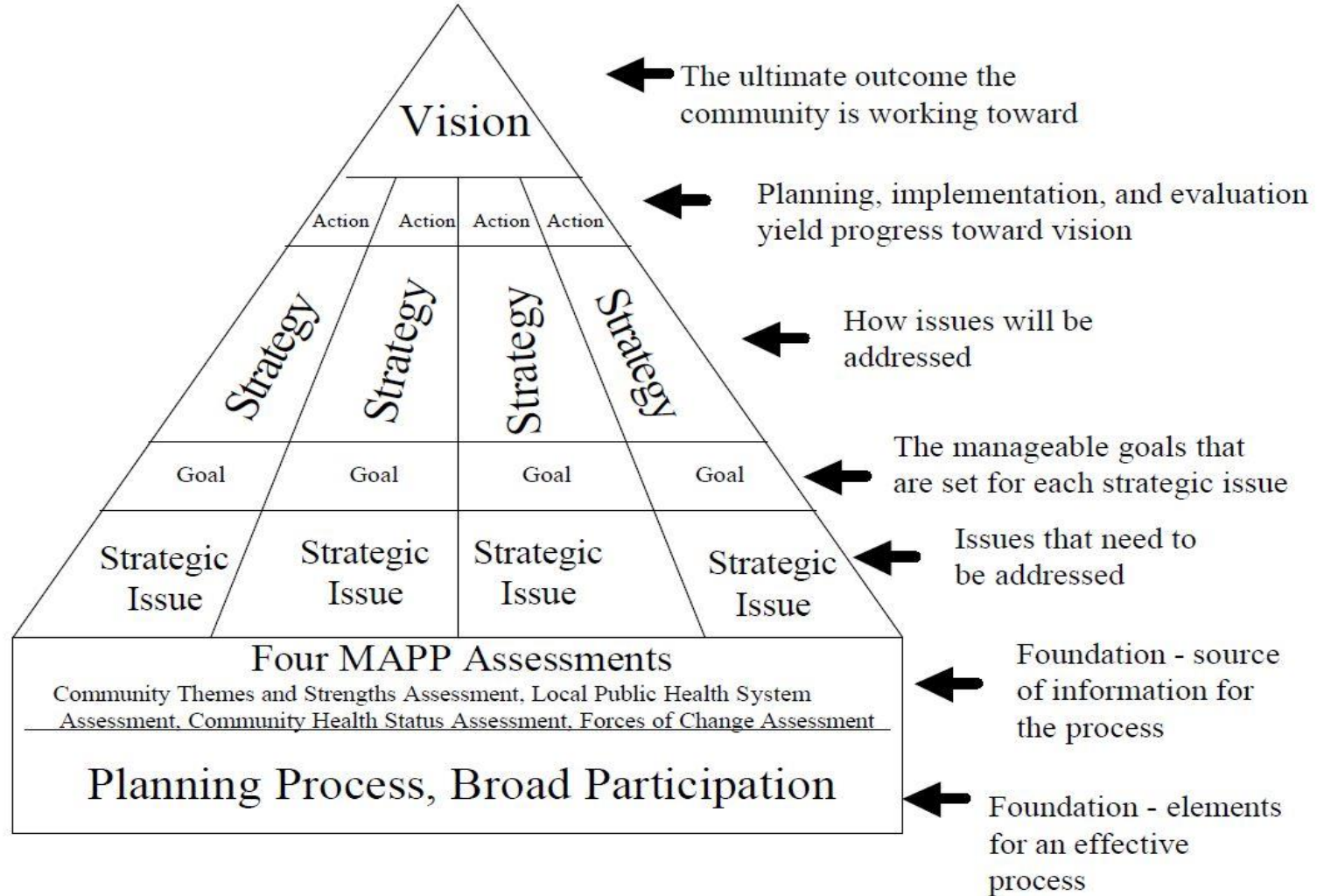


MAPP Phase 6

Action Cycle:
Plan, Implement, Evaluate



How Do the MAPP Components Relate?



MAPP

Paradigm Shift

FROM	TO
Operational planning	Strategic Planning
Focus on the agency	Focus on community & entire public health system
Needs assessment	Emphasis on assets and resources
Medically oriented model	Broad definition of health
Agency knows all	Everyone knows something

Three Keys to MAPP

MAPP



- Focus on the Local Public Health System
- Strategic Thinking
- Community Driven Process

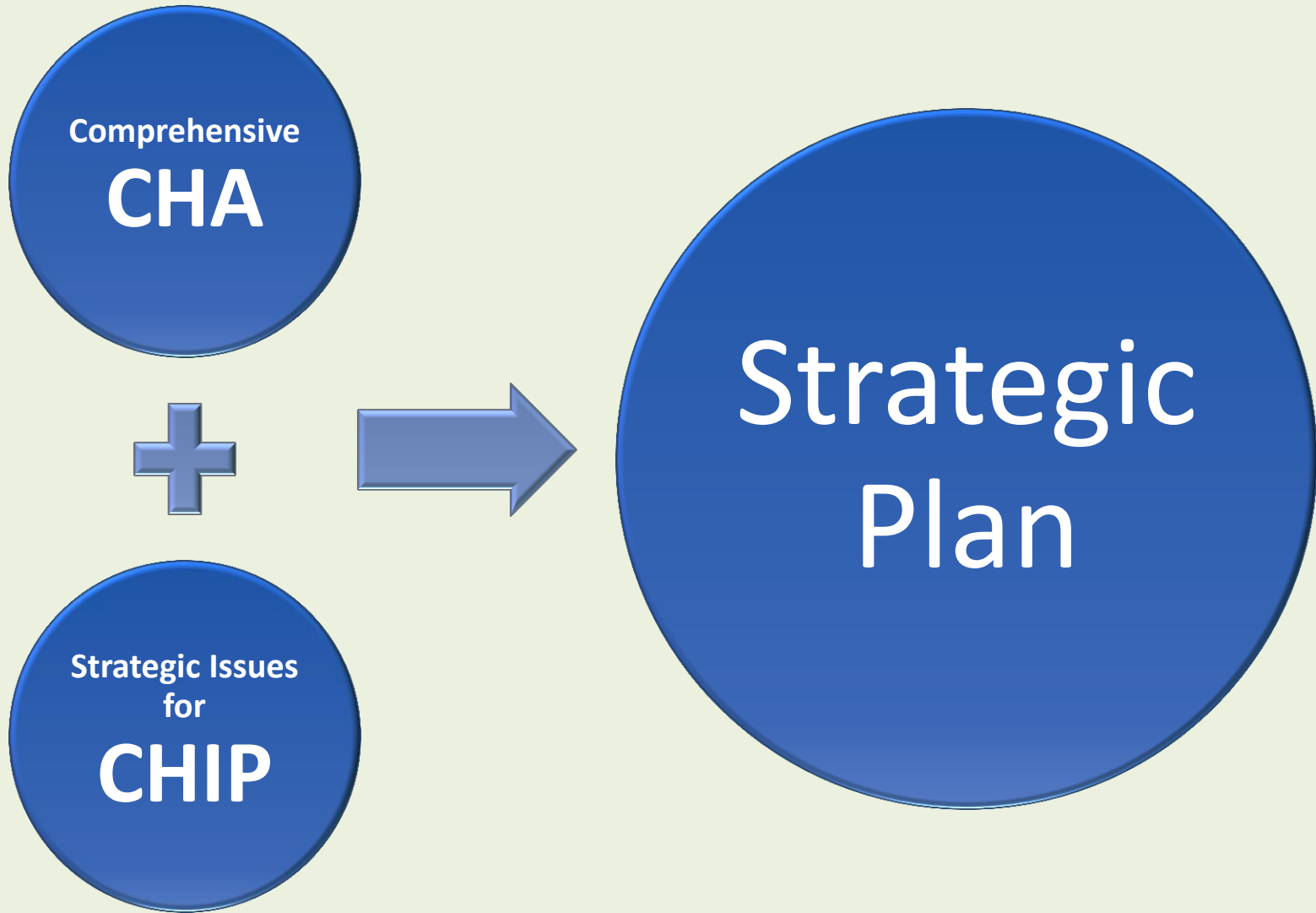
MAPP

Benefits

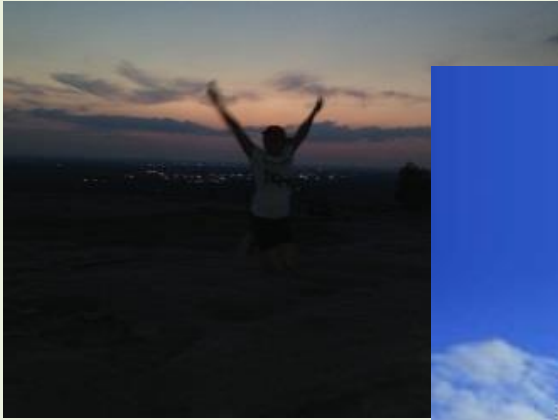
- Increased recognition
- Access to data
- Stronger public health system infrastructure
- Reduced duplication of services
- Increased financial resources
- Stronger project proposal
- Creates advocates
- Creates a healthy community

MAPP Products and Relationship to Public Health (System) Accreditation

MAPP

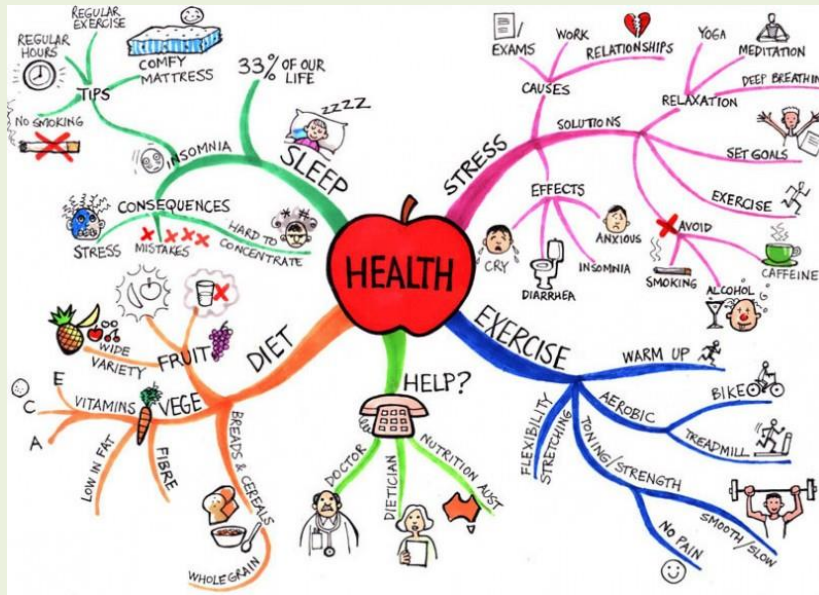


CELEBRATE SUCCESSSES



What is health?

Health is...



...a dynamic state of complete **physical, mental, spiritual and social well-being** and not merely the absence of disease or infirmity (WHO 1946)...

- Public health is “what we as a society do **collectively to assure the conditions** in which people can be healthy.” (IOM 1988)



Healthy Solano

MAPP - YOUR COMMUNITY ROADMAP TO HEALTH!

Action Cycle

Evaluate Implement Plan

Formulate Goals and Strategies

Identify Strategic Issues

Community Themes & Strengths Assessment

Forces of Change Assessment

4 Mapp Assessments

Community Health Status Assessment

Local Public Health System Assessment

Our Vision



Organize for Success / Partnership Development

Healthy Solano

MAPP - YOUR COMMUNITY ROADMAP TO HEALTH!

Action Cycle

Evaluate Implement Plan

Formulate Goals and Strategies

Identify Strategic Issues

Community Themes & Strengths Assessment

Forces of Change Assessment

4 Mapp Assessments

Community Health Status Assessment

Local Public Health System Assessment

Our Vision

Organize for Success / Partnership Development



Healthy Solano

MAPP - YOUR COMMUNITY ROADMAP TO HEALTH!

Action Cycle

Evaluate Implement Plan

Formulate Goals and Strategies

Identify Strategic Issues

Community Health & Strength

Community Health Status Assessment

Local Public Health System Assessment

Our Vision

Organize for Success / Partnership Development



Healthy Solano

MAPP - YOUR COMMUNITY ROADMAP TO HEALTH!

Action Cycle

Evaluate Implement Plan

Formulate Goals and Strategies

Identify Strategic Issues

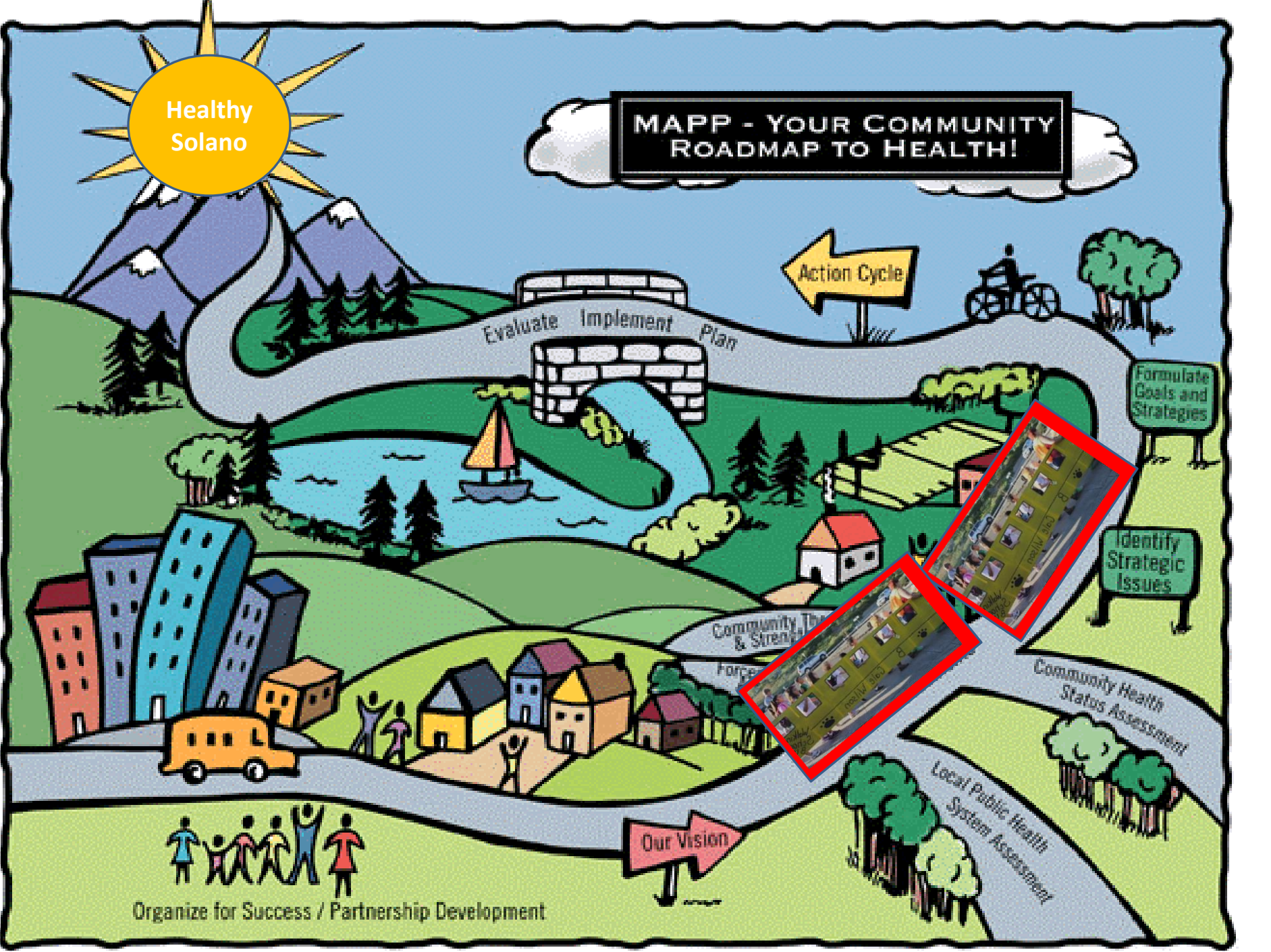
Community Health & Strength Forces

Community Health Status Assessment

Local Public Health System Assessment

Our Vision

Organize for Success / Partnership Development



Healthy Solano

MAPP - YOUR COMMUNITY ROADMAP TO HEALTH!

Action Cycle

Evaluate Implement Plan

Formulate Goals and Strategies

Identify Strategic Issues

Community Themes & Strengths Assessment

Forces of Change Assessment

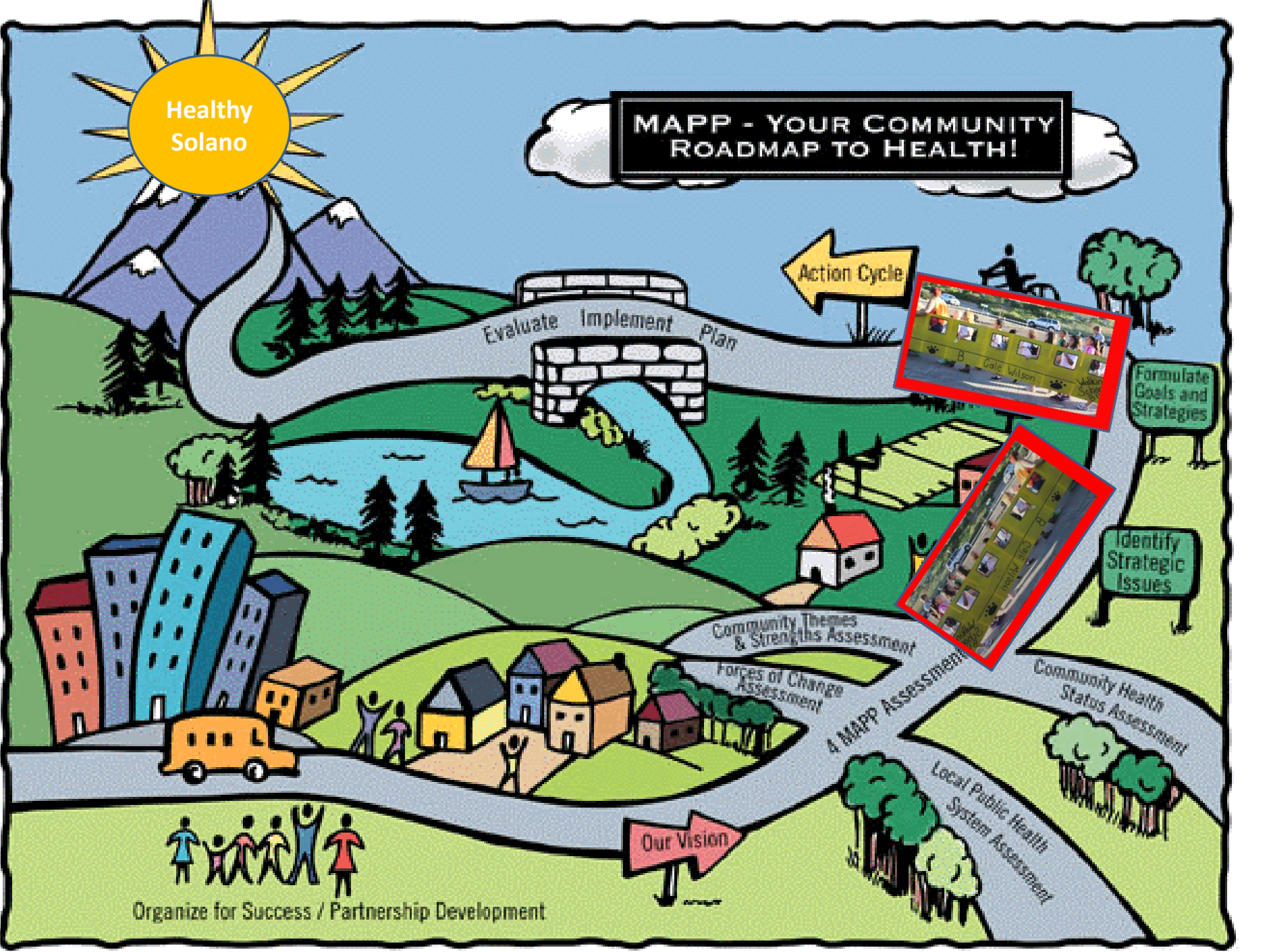
4 Mapp Assessment

Community Health Status Assessment

Local Public Health System Assessment

Our Vision

Organize for Success / Partnership Development



Healthy Solano

MAPP - YOUR COMMUNITY ROADMAP TO HEALTH!



Evaluate Implement Plan

Formulate Goals and Strategies

Identify Strategic Issues

Community Themes & Strengths Assessment

Forces of Change Assessment

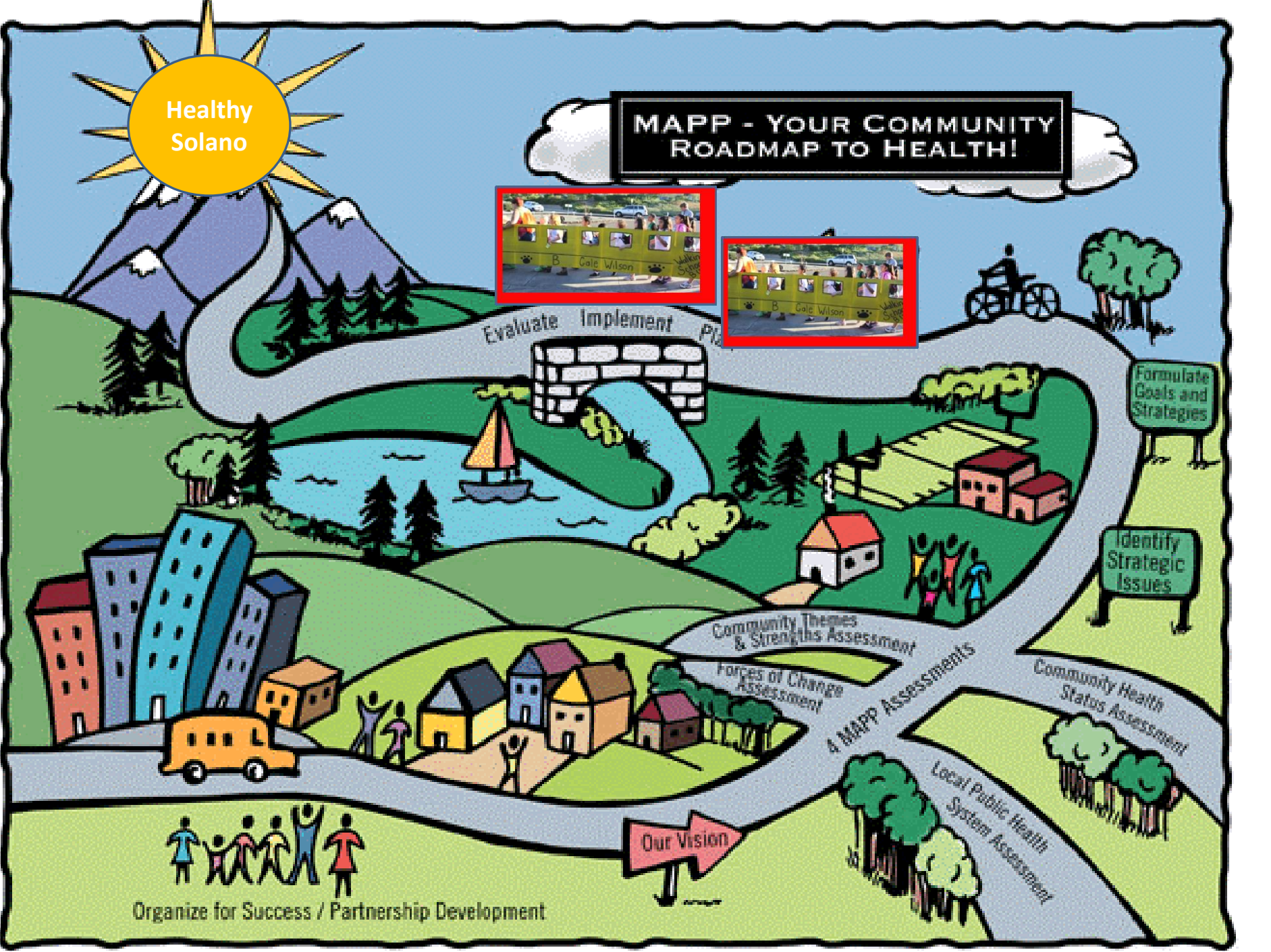
4 Mapp Assessments

Community Health Status Assessment

Local Public Health System Assessment

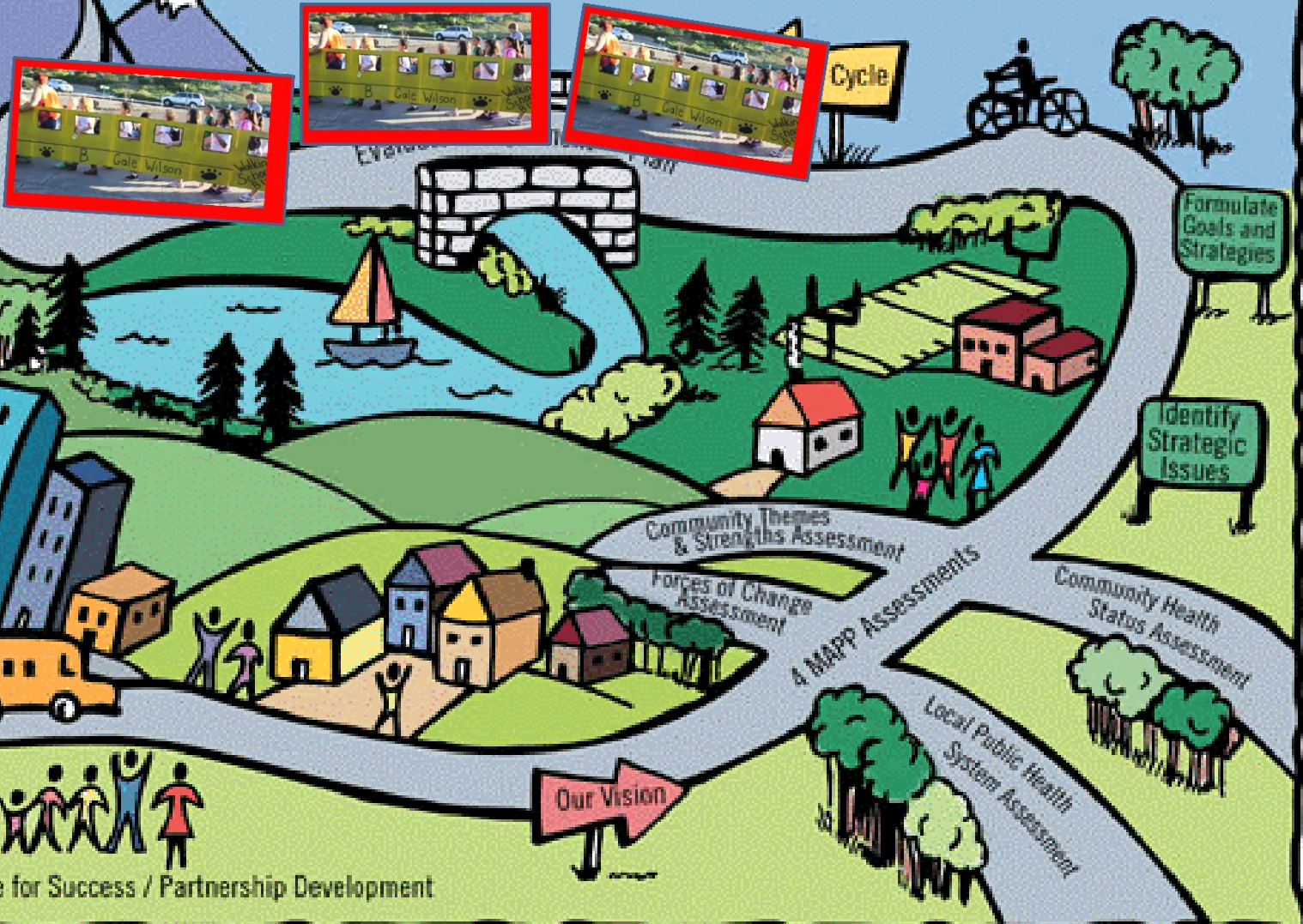
Our Vision

Organize for Success / Partnership Development



Healthy Solano

MAPP - YOUR COMMUNITY ROADMAP TO HEALTH!



MAPP Steering Committee

Roles and Responsibilities

MAPP Phase	Steering Committee Role
1. Organize for Success/Partnership Development	<ul style="list-style-type: none"> • Provide input into recruits • Approve plan for MAPP process • Identify additional partners
2. Visioning	<ul style="list-style-type: none"> • Oversee and participate • Develop plan for gaining broad participation • Identify community representatives
3. Four Assessments	<ul style="list-style-type: none"> • Oversee subcommittee activities • Participate in assessments • Identify data sources/select indicators for CHSA • Discuss results
4. Identify Strategic Issues	<ul style="list-style-type: none"> • Participate in meetings • Discuss/Approve strategic issues
5. Formulate Goals and Strategies	<ul style="list-style-type: none"> • Participate in meetings • Discuss/Approve goals and strategies
6. The Action Cycle	<ul style="list-style-type: none"> • Oversee action planning, implementation and evaluation

MAPP Steering Committee⁴²

Participate as one of the
domain champions for
public health accreditation

MAPP Timeline

MAPP Phase / Description of Activity	Month (2015-2016)																	Completed	
	Feb	Mar	Apr	May	Jun	Jul	Aug	Sep	Oct	Nov	Dec	Jan	Feb	Mar	Apr	May	Jun		Jul
Phase 1: Organize for Success / Partnership Development	█	█	█	█															
Phase 2: Visioning	█	█	█	█															
Phase 3: 4 MAPP Assessments	█	█	█	█	█	█	█	█	█										
Phase 3.a: Community Themes and Strengths Assessment	█	█	█	█	█	█	█												
Phase 3.b: Local Public Health System Assessment							█	█	█	█									
Phase 3.c: Forces of Change Assessment		█	█	█	█	█													
Phase 3.d.: Community Health Status Assessment	█	█	█	█	█	█	█												
Phase 4: Identify Strategic Issues											█	█	█	█	█	█	█	█	
Phase 5: Formulate Goals and Strategies																	█	█	█
Phase 6: The Action Cycle																█	█	█	█



Healthy People – Healthy Community



COMMUNITY HEALTH STATUS ASSESSMENT

data we currently have

Meileen Acosta, MPH

Marijoyce Naguit, MPH

MAPP Steering Committee Kick-Off

February 23, 2015

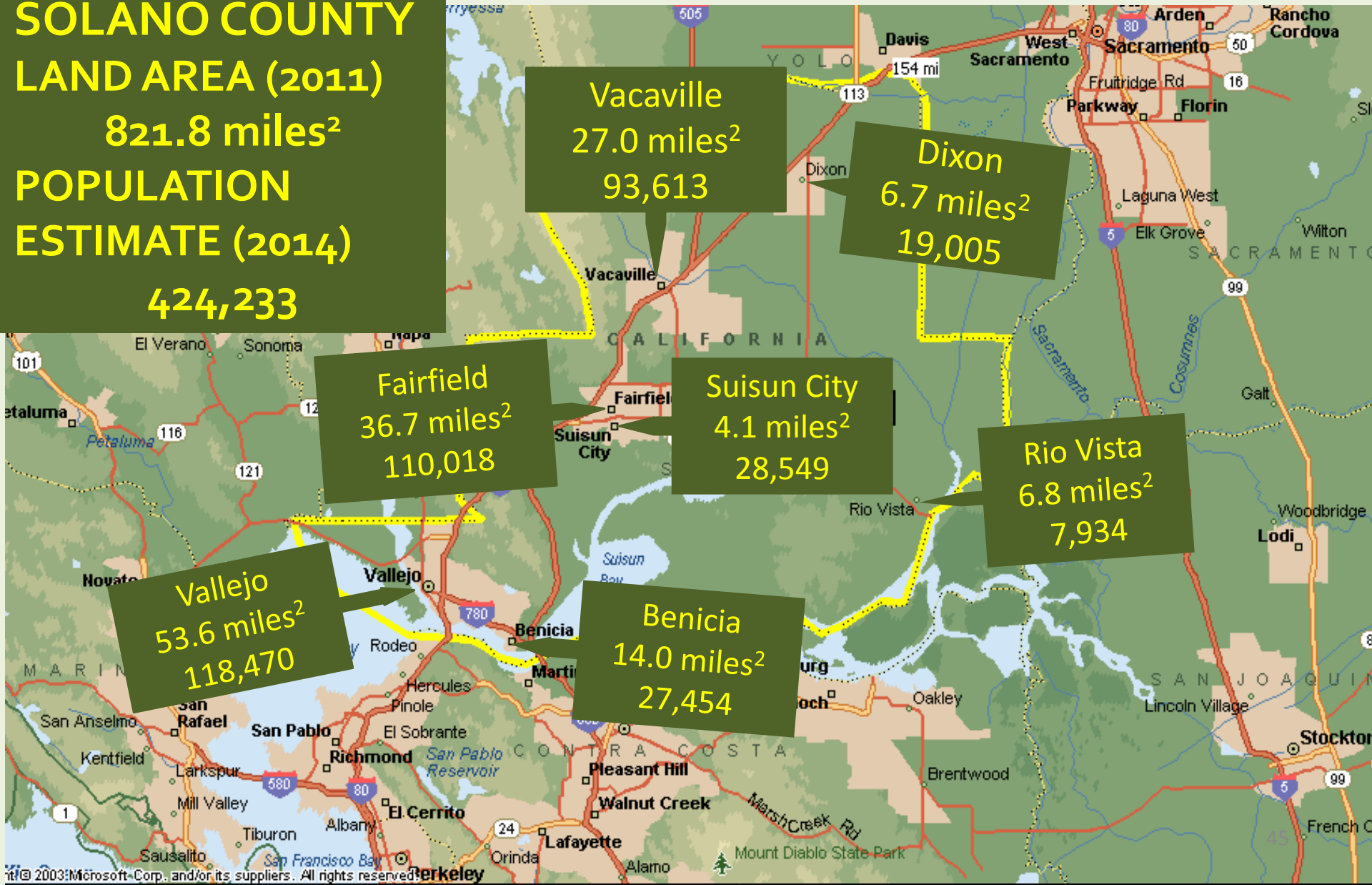


Healthy People – Healthy Community



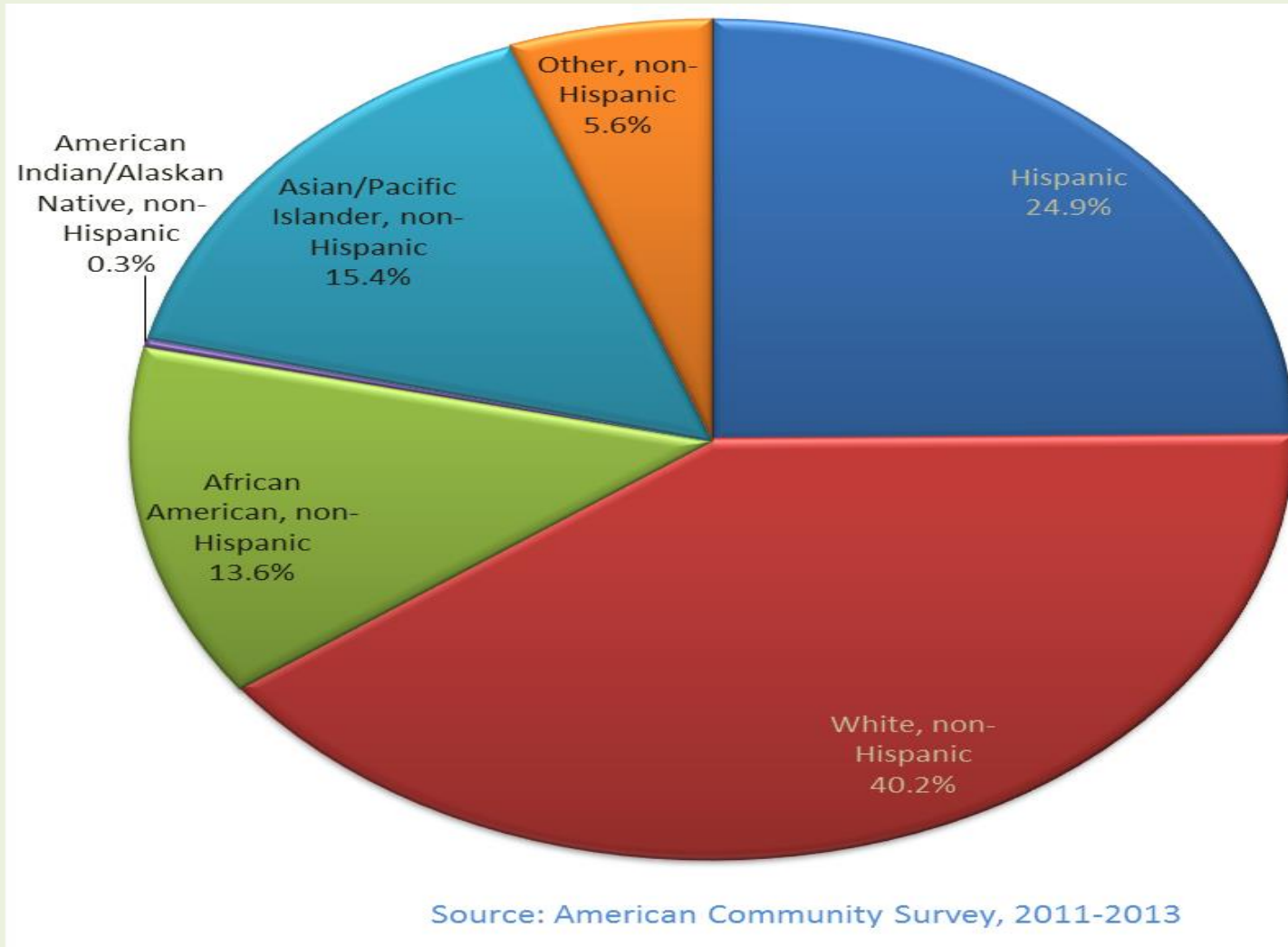
Demographics: Land Area and Population

SOLANO COUNTY
LAND AREA (2011)
821.8 miles²
POPULATION
ESTIMATE (2014)
424,233



Demographics

Race/Ethnicity



Demographics

Age and Gender

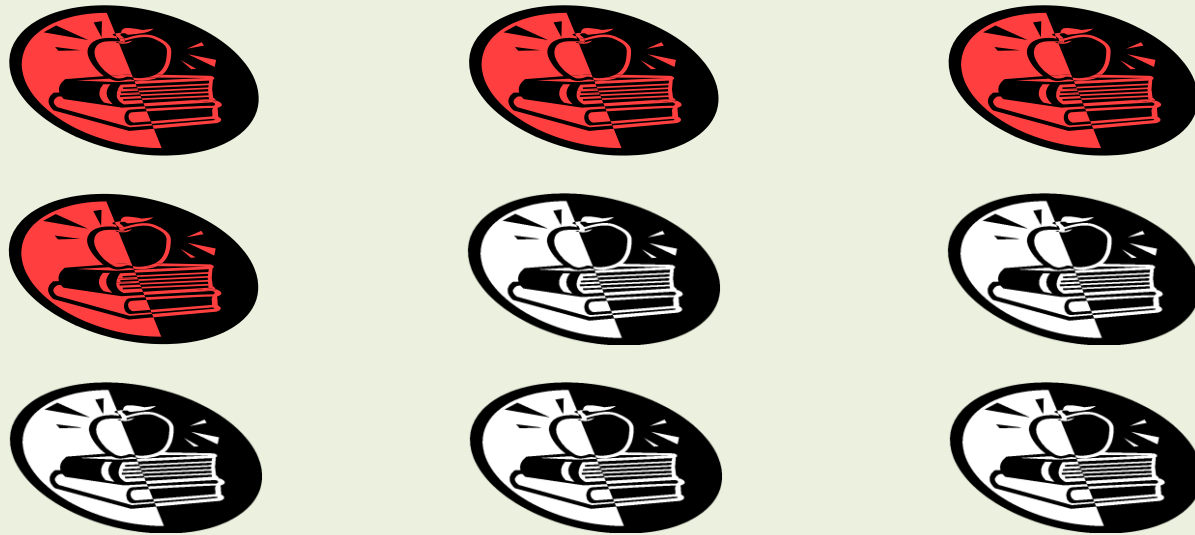
- **Median age: 37 years**
 - White, non-Hispanic: 46 years
 - Hispanic: 27 years
- **Children under 18 years old**
 - Almost **1 in 4** (24%)
- **Adults 65 years old or older**
 - Over **1 in 9** (12%)
- **Gender**
 - **Female: 50%**
Average life expectancy: **81 years**
 - **Male: 50%**
Average life expectancy: **77 years**

Source: American Community Survey, 2011-2013

Third Grade Reading

Socioeconomic

Over **4 in 9** (45%) Solano **third grade** children read at grade level*



*CA: 45% third graders read at grade level

Source: Kidsdata.org



Healthy People – Healthy Community



Socioeconomic

Educational Attainment

8 in 9 (88%) Solano adults 25 years and older had a high school degree or higher



About **3 in 9** (34%) Solano adults 25 years and older had an associates degree or higher



Over **2 in 9** (25%) Solano adults 25 years and older had a Bachelor's degree or higher



Source: American Community Survey, 2011-2013

Socioeconomic

Income and Rent

- Median household income: \$67, 177
- Median rent: \$1,264
- Almost **HALF** (48.3%) of Solano residents **spend** 35% or more of their household **income on rent**

Source: American Community Survey, 2009-2013

Socioeconomic

- **All Solano residents**
About **1 in 8** (13%)
- **Children under 18 years old**
Almost **1 in 5** (18.8%)
- **Adults 18 to 64 years old**
Over **1 in 9** (11.8%)
- **Adults 65 years old or older**
Over **1 in 15** (7.5%)

Source: American Community Survey, 2009-2013

Health Resource Availability

- **All Solano residents**
7 in 8 (87%)
- **Children under 18 years old**
Over 14 in 15 (94.2%)
- **Adults 18 to 64 years old**
Over 4 in 5 (81.6%)

Source: American Community Survey, 2009-2013

Health Resource Availability

Access to Care -- Children

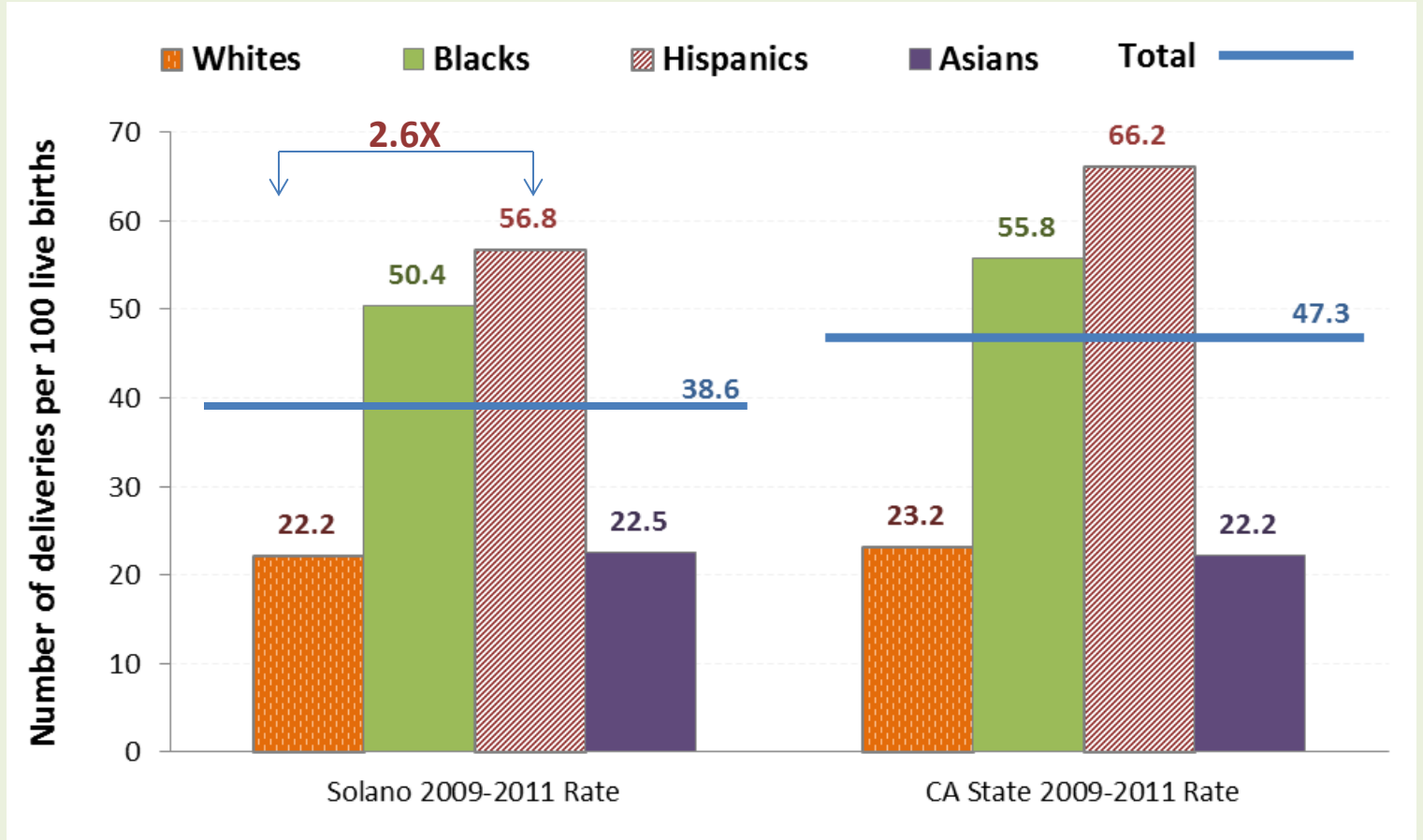
- For every 100 children age 0 to 17 years old, **91.1** had a doctor.*
- For every 100 children age 3 to 11 years old, **87.6** had a dental visit in the past year.*
- For every 100 Medicaid/CHIP enrollee age 1 to 20 years old, **40.8** received any dental service.**

*Source: California Health Interview Survey (CHIS), 2011-2012

**Source: Utilization by County for Dental Managed Care and Fee for Service.

Health Resource Availability

Medi-Cal Insured Deliveries by Race/Ethnicity



Source: California Center for Health Statistics, Vital Statistics, Birth Statistical Master File



Healthy People – Healthy Community



Behavioral Risk Factor

Tobacco and Alcohol Use

	Solano	California
% of adults who smoke (2011-2012)*	21.3%	13.8%
% of youth grades 9-12 who smoke (2012)**	10.4%	10.5%
% of 11th graders who used alcohol in the past 30 days (2009-2011) +	38%	35%
% of 11th graders who binge drink (2009-2011) +	21%	22%

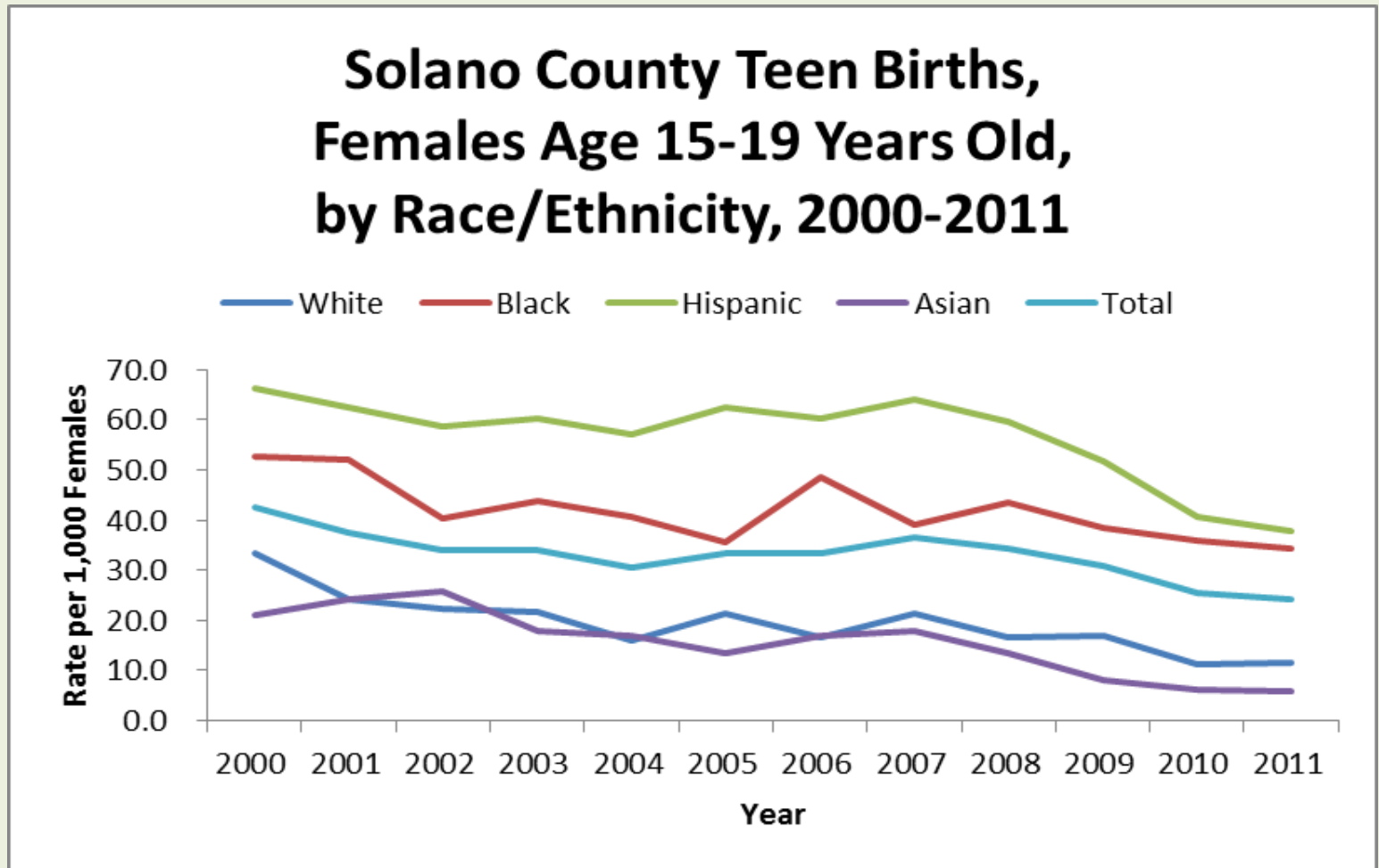
*Source: California Health Interview Survey (CHIS), 2011-12

**Source: California Student Tobacco Survey (CSTS), 2012.

+Source: Analysis by California Department of Public Health, Safe and Active Communities Branch (SACB), December, 2013. Based on West Ed website LEA reports <http://chks.wested.org/reports/search> and from aggregate county reports.

Behavioral Risk Factor

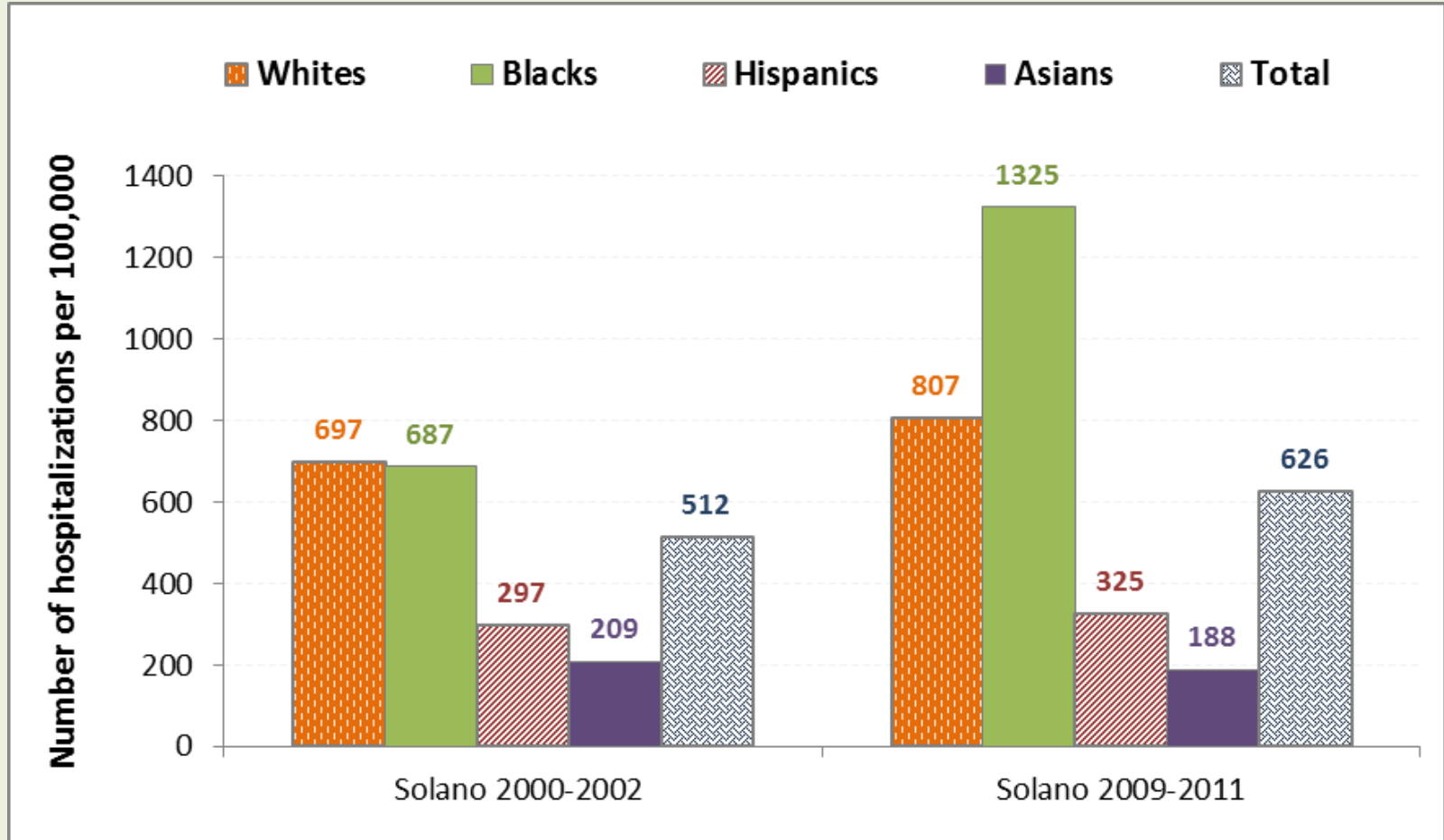
Teen Birth Rate



Source: California Center for Health Statistics, Vital Statistics, Birth Statistical Master File

Behavioral Risk Factor

Substance Abuse Hospitalization Rate
Females Age 15 to 24 years old, by
Race/Ethnicity



Source: Office of Statewide Health Planning and Development (OSHPD), analyzed by Family Health Outcomes Project, UCSF



Behavioral Risk Factor

94.5% of Solano County students are up-to-date on their immunizations (90.4% in CA)

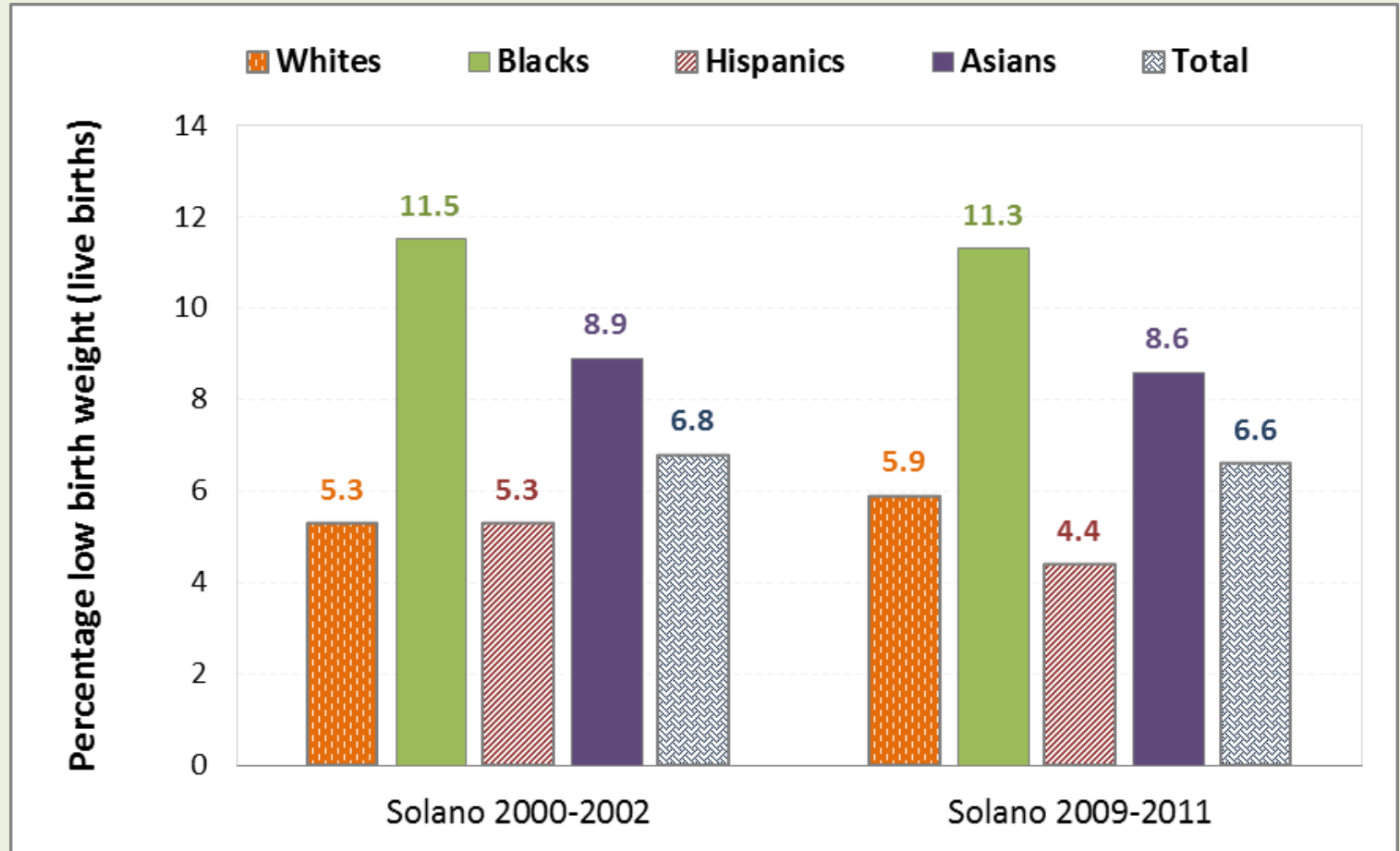
Benicia has the **highest** percent of under-immunized students: 8.1%
(3.6% in Solano County; 6.9% in CA)

Vacaville has the **highest** percent of Personal Belief Exemptions (**PBE**): 3.6%
(1.8% in Solano County; 2.5% in CA)

Source: CDPH Immunization Levels in Child Care and Schools, 2014-2015

Percentage Infant Low Birth Weight

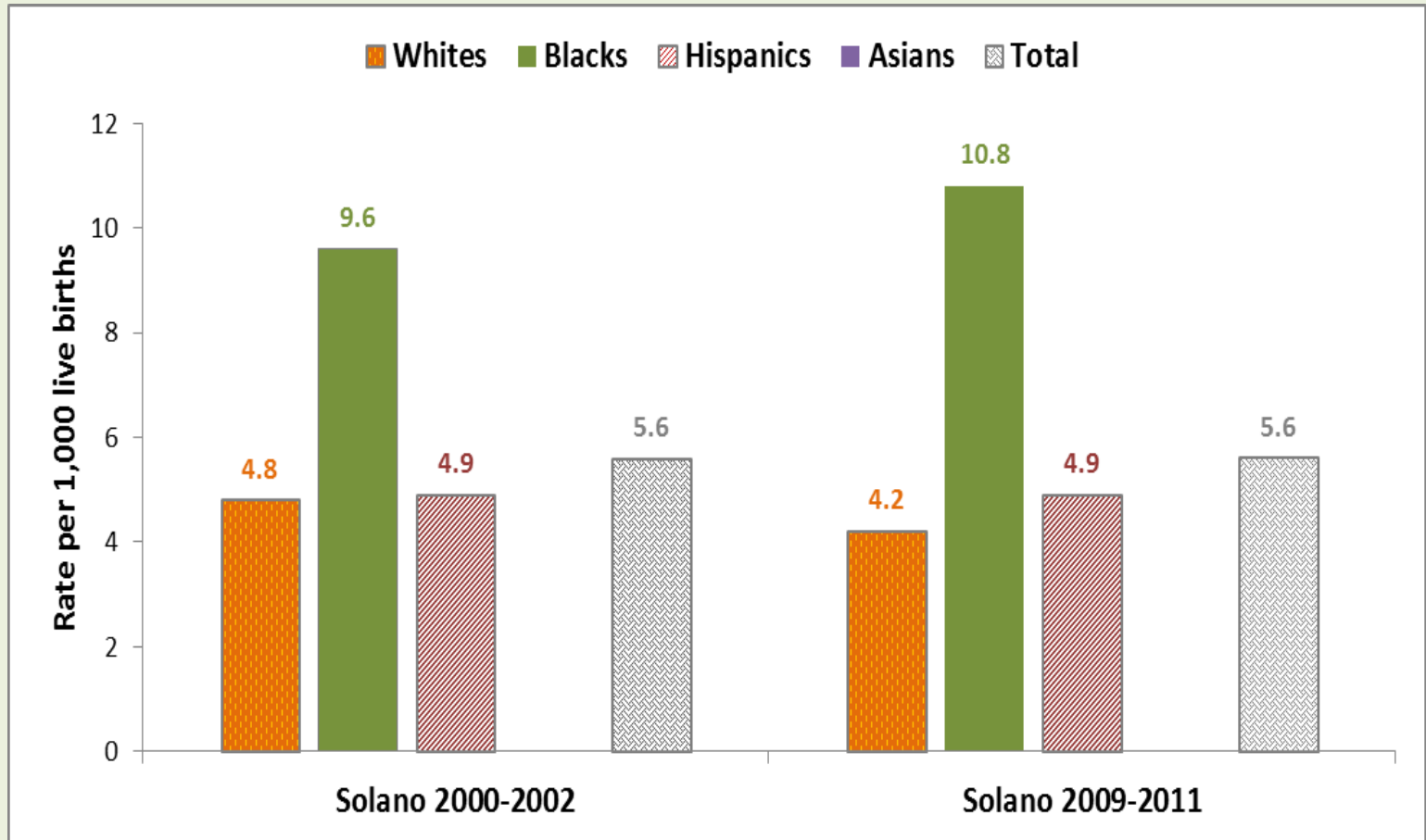
Health Outcome



Source: California Center for Health Statistics, Vital Statistics, Birth Statistical Master File

Rate of Infant Mortality by Race/Ethnicity

Health Outcome



Source: California Center for Health Statistics, Vital Statistics, Birth Statistical Master File

Health Outcome

Childhood Lead

102 children age 20 years old or younger in Solano County had elevated blood lead level

In Solano County, **Vallejo** has the **highest** percentage of children with elevated blood levels: 43.1%

Source: Solano County, Childhood Lead Program, 2013-2014



Healthy People – Healthy Community



Health Outcome

Obesity

	Solano	California
Overweight and obese public school students per 100 population in grades 5, 7, 9, and 11 (2009-2011)*	38.4	38
% of adults who are overweight or obese (2011-12)**	69.2%	59.8%

*Source: Kidsdata.org

**Source: California Health Interview Survey (CHIS), 2011-2012

Health Outcome

Prevalence of asthma among **Solano** residents is **1.6X higher** than among all Californians

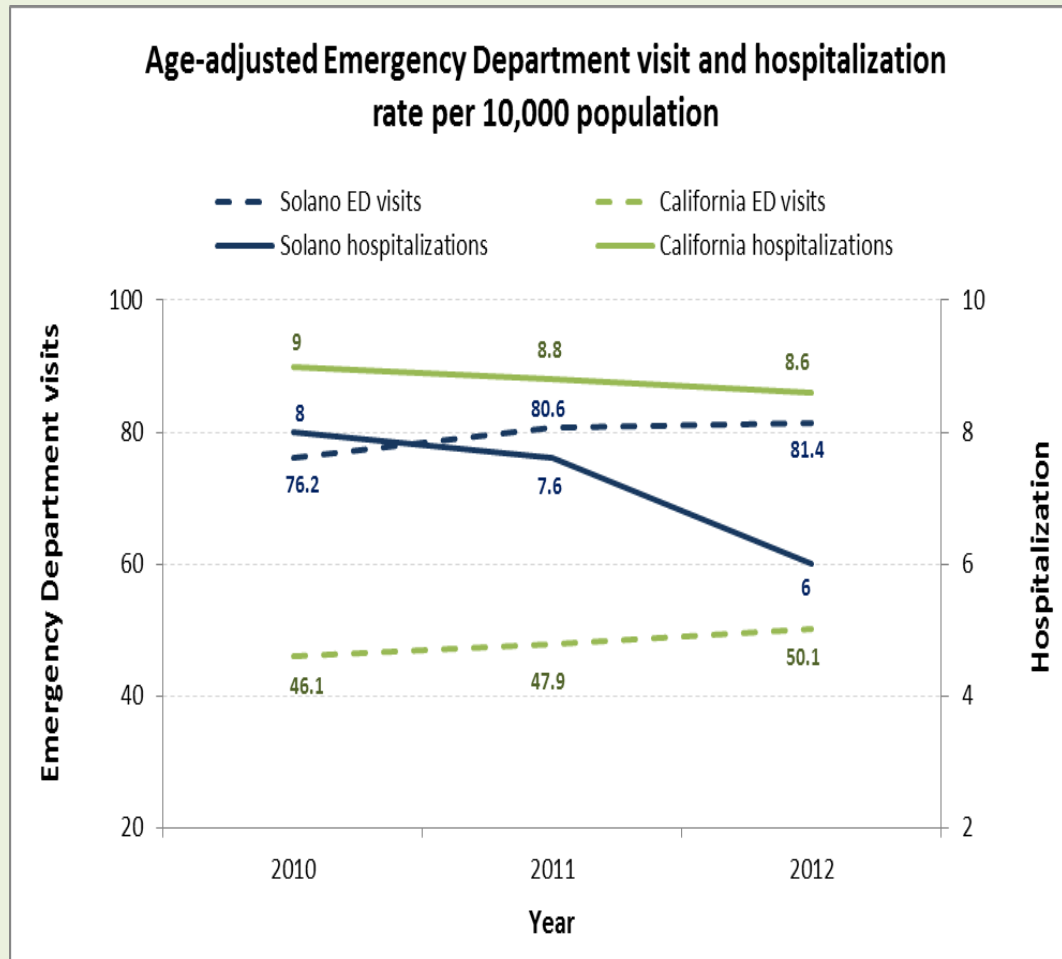
Solano: 22.6%

California: 14.1%

Source: California Health Interview Survey (CHIS), 2011-2012

Asthma ED Visits and Hospitalizations

Health Outcome



ED visit rate in 2012 among Solano residents was **1.6 X** the ED visit rate among all Californians; however, the **hospitalization rate** among Solano residents is **lower** compared to that of all Californians.

Source: California Breathing, using Office of Statewide Health Planning and Development (OSHPD) 2010-2012 ED Databases

Health Outcome

Diabetes

- Prevalence (among adults 20 years old and older, 2011)*:
10.7% (↑ than CA)
- ED visit rate**:
297.6 per 10,000 population (↑ than CA)
- Hospitalization rate**:
181.1 per 10,000 population (↓ than CA)
- Mortality rate***:
24.1 per 100,000 population (↑ than CA)
(age-adjusted)

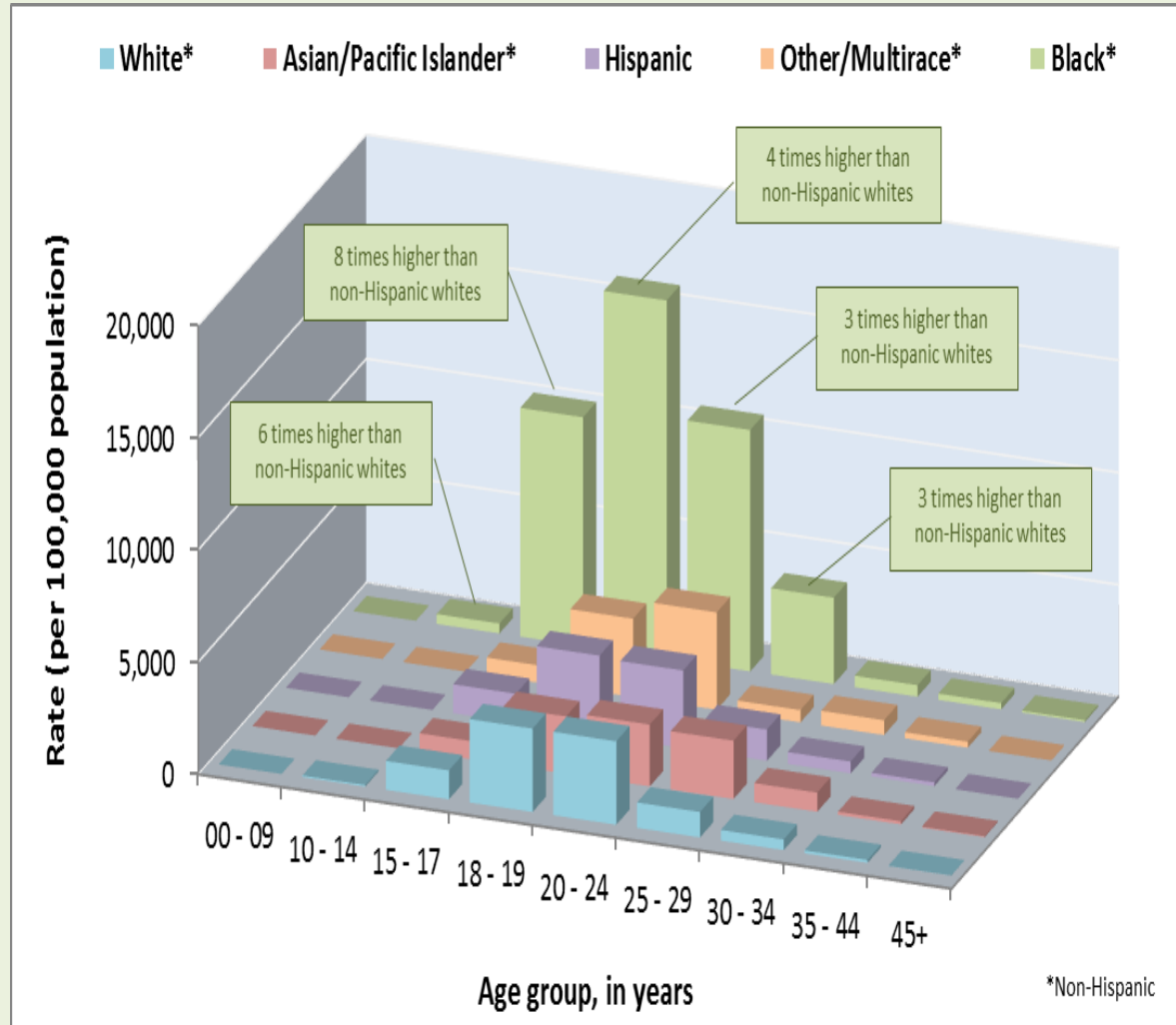
*Source: National Center for Chronic Disease Prevention and Health Promotion, Division of Diabetes Translation:

**Source: Office of Statewide Health Planning and Development (OSHPD), 2011

***Source: California Department of Health, 2010

Health Outcome

Chlamydia Rate Among Females, By Age Group and Race/Ethnicity (2012)



HIGHER chlamydia rate among **African American female youths** than White youths

The rate of chlamydia among African American female youths 15-24 years old are **3 to 8 times higher** compared to non-Hispanic white youths of the same age group.

Source: California Department of Public Health, Sexually Transmitted Diseases Branch

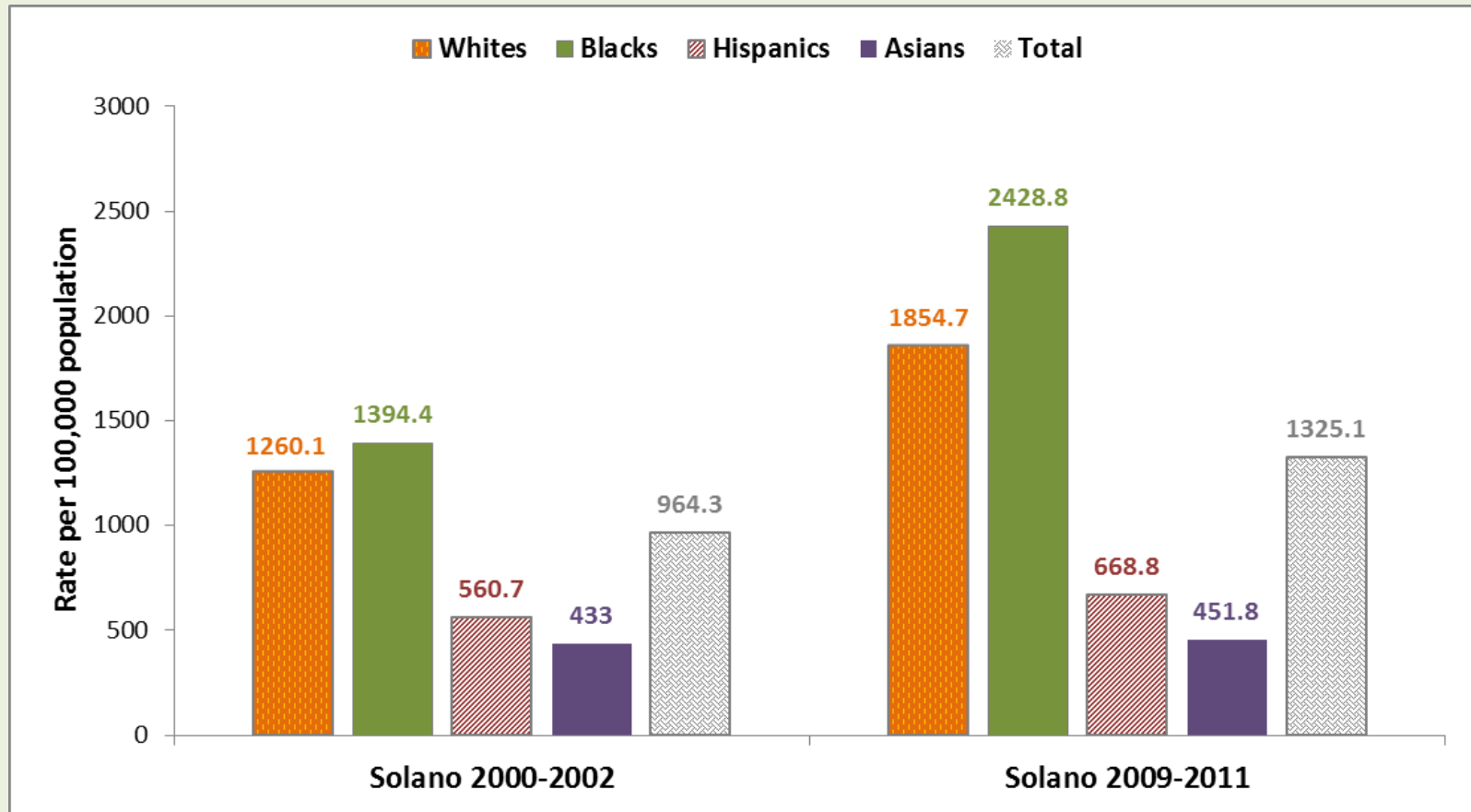


Healthy People – Healthy Community



Health Outcome

Mental Illness Hospitalization, Age 15 to 24 Years, by Race/Ethnicity



Source: Office of Statewide Health Planning and Development (OSHPD), analyzed by Family Health Outcomes Project, UCSF

Health Outcome

Mortality Rates

Top three causes of death:

1. **All cancers (177.6 per 100,000)**

Top three cancer deaths

1. Lung cancer (44.4 per 100,000)
 2. Breast cancer (female) (26.4 per 100,000)
 3. Prostate cancer (18.0 per 100,000)
2. **Coronary heart disease (80.0 per 100,000)**
 3. **Alzheimer's disease (44.9 per 100,000)**

Source: California Department of Public Health, 2010-2012

Community Environment

Food Availability

Over 1 in 4 (26.5%) adults ate *3+ fruits and vegetables* the day before (2011-2012)*



1 in 3 (33.3%) tobacco retail stores have *low or nonfat milk* available (2013)**



Over 2 in 5 (42.7%) tobacco retail stores have *fresh fruit or vegetables* available (2013)**

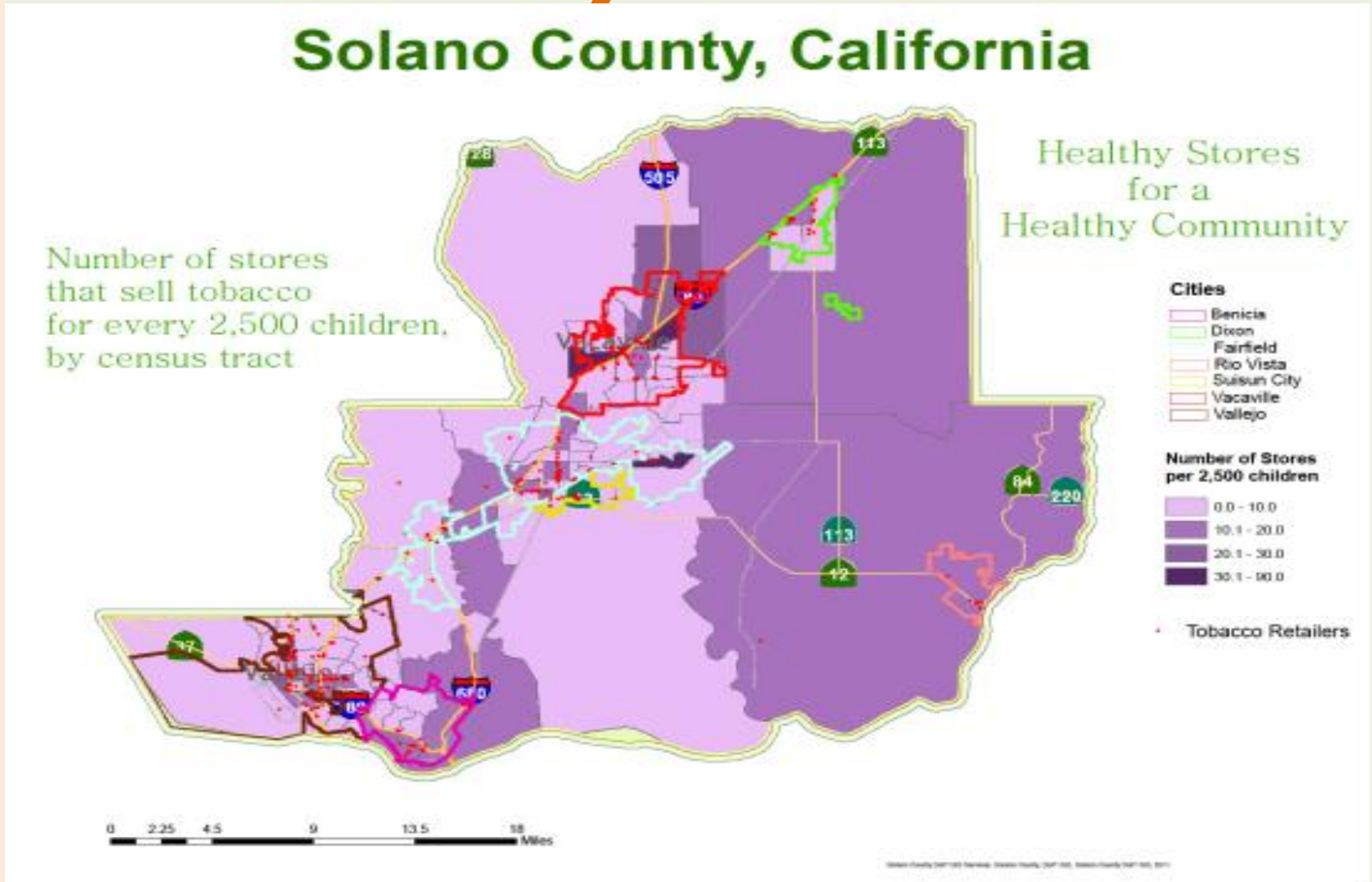


*Source: California Health Interview Survey (CHIS), 2011-12

**Source: Tobacco Prevention and Education Program, Healthy Stores Health Community survey, 2013

Community Environment

Tobacco Retailers per 2,500 Children



Source: American Community Survey (Population); California Board of Equalization (Tobacco Retailers)

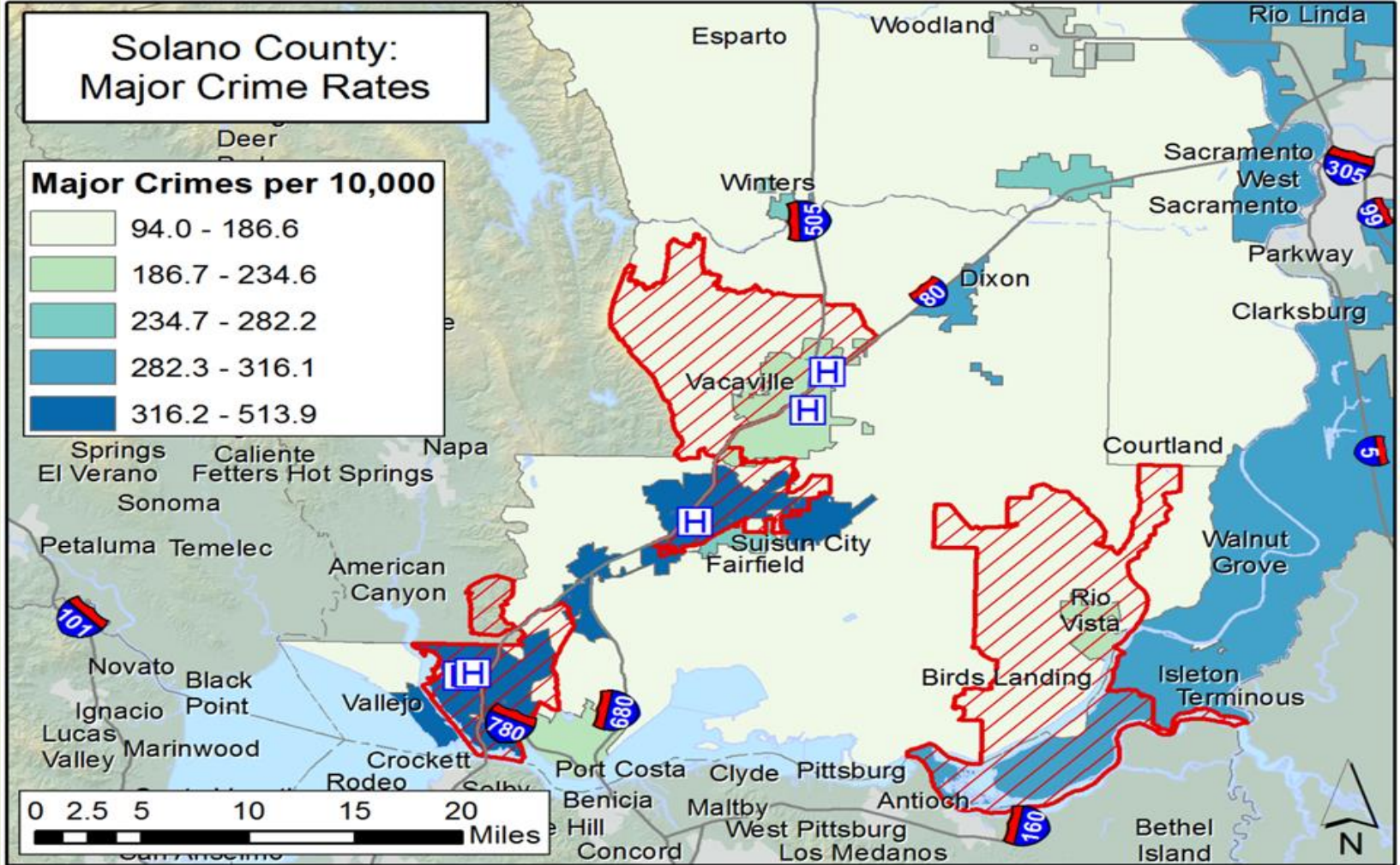


Healthy People – Healthy Community



Community Environment

Crime Rate



Source: Major crimes by municipality as reported by California Attorney General's Office, 2010



Healthy People – Healthy Community



COMMUNITY THEMES and STRENGTHS ASSESSMENT

preliminary data



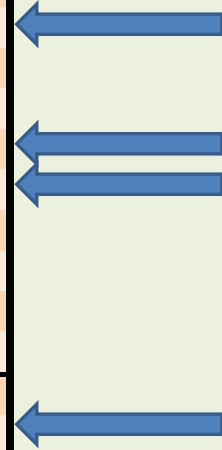
Meileen Acosta, MPH
Marijoyce Naguit, MPH
MAPP Steering Committee Kick-Off

February 23, 2015



CTSA Survey Respondents ⁷³

	Percentage
Total =774	
Solano resident	
Yes	91.0
No	4.0
Unknown	5.0
City of residence	
Benicia	2.9
Dixon	0.9
Fairfield	39.5
Rio Vista	1.4
Suisun	8.9
Vacaville	18.5
Vallejo	19.5
Unincorporated Area	0.4
Other	1.6
Not a Solano Resident	2.2
UNKNOWN	4.2
Gender	
Female	76.2
Male	19.0
Unknown	4.9



Source: Community Themes and Strengths Assessment, Solano County, 2014

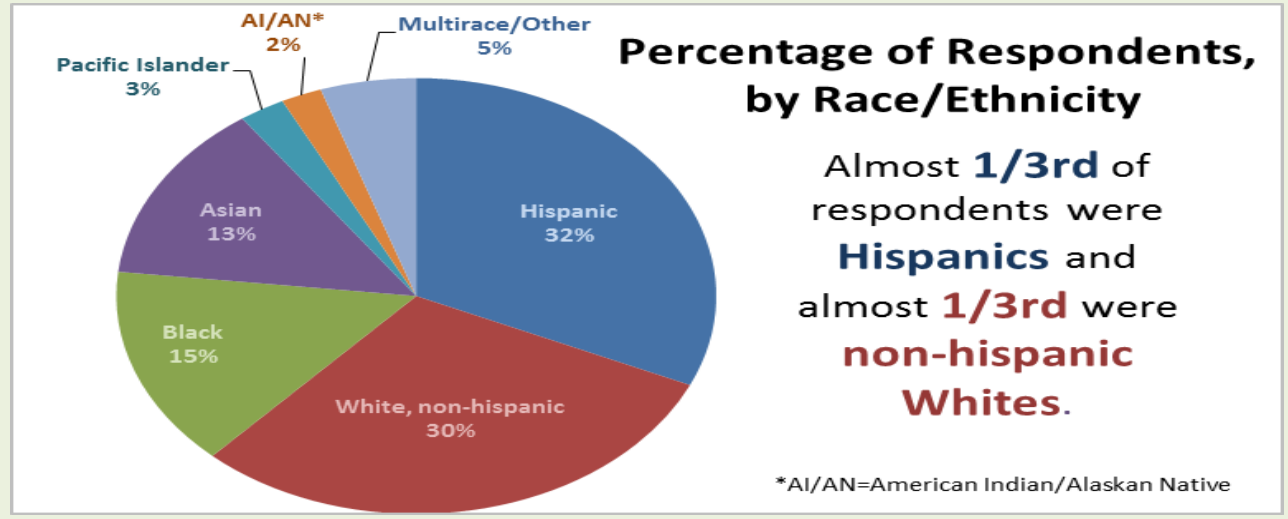
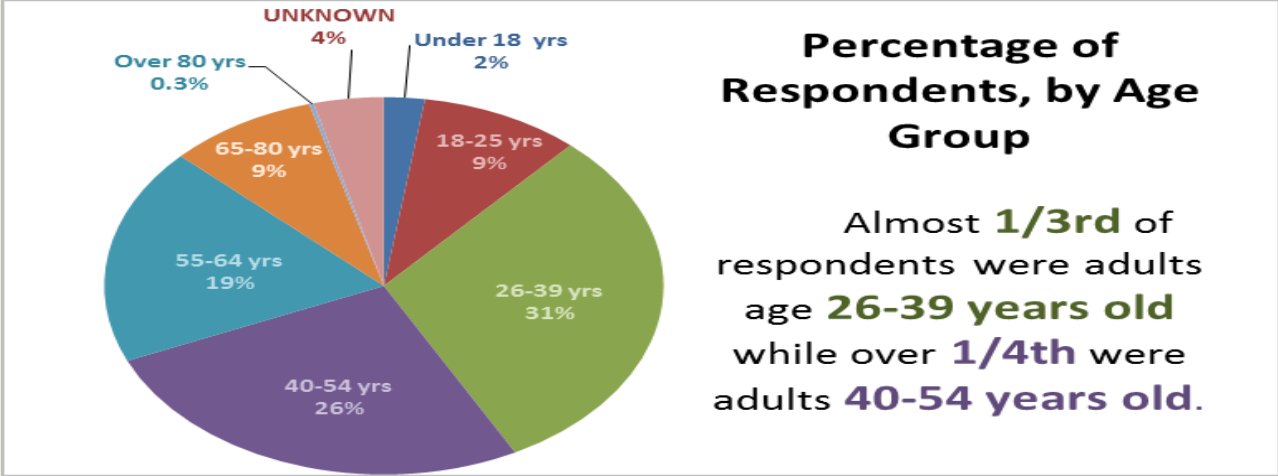


Healthy People – Healthy Community



CTSA Survey Respondents

Demographic Information



Source: Community Themes and Strengths Assessment, Solano County, 2014

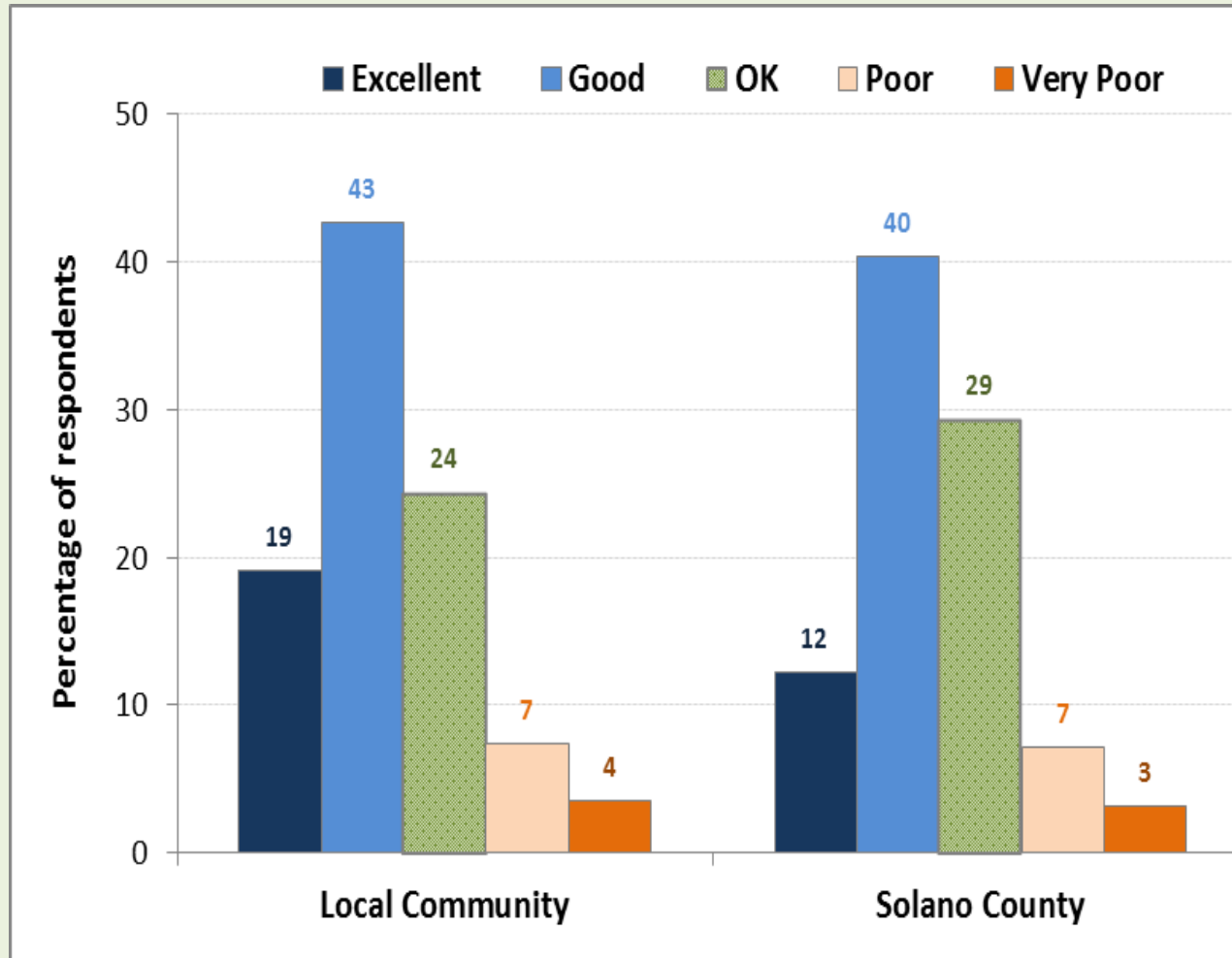


Healthy People – Healthy Community



A Place to Live

How would you rate your local community and Solano County as a place to live?

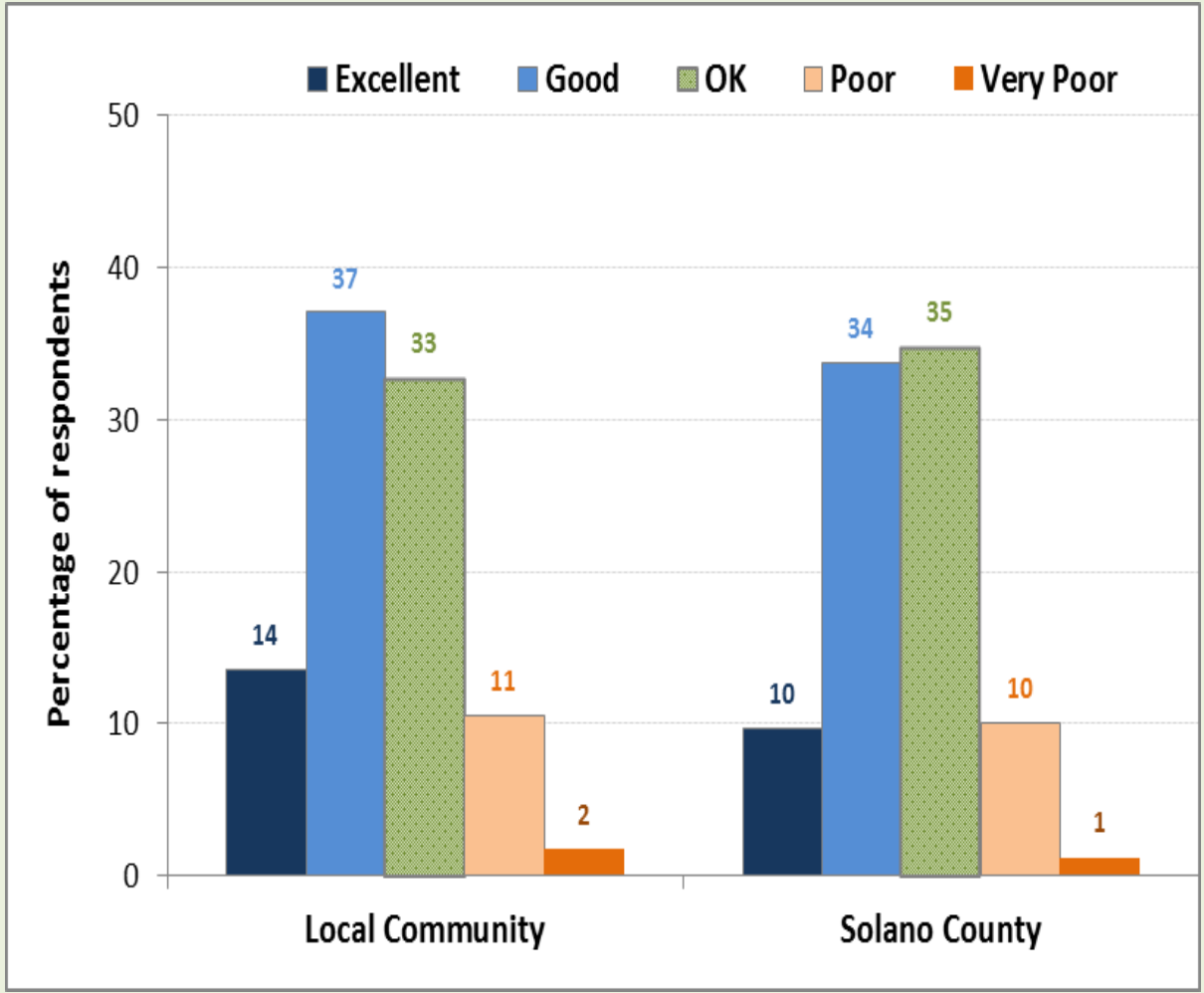


Over **3/5th** of respondents rated their local community and Solano County as either a **“Good”** or **“Excellent”** place to live.

Source: Community Themes and Strengths Assessment, Solano County, 2014

Community Involvement

How would you rate the sense of community involvement and responsibility in your local community and in all of Solano County?



Only **half** of respondents said their local community and Solano County have a “**Good**” or “**Excellent**” sense of community involvement and responsibility.

Source: Community Themes and Strengths Assessment, Solano County, 2014

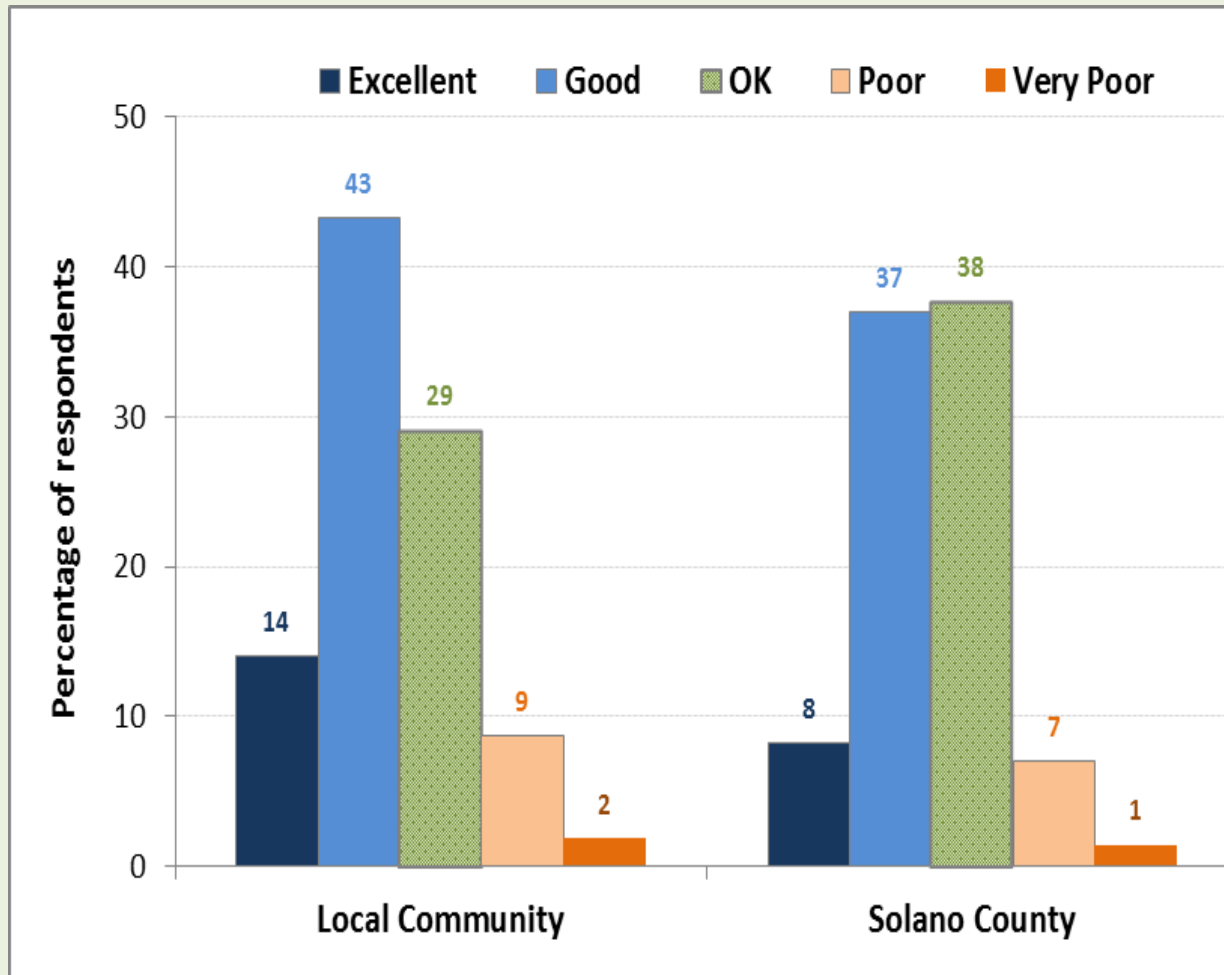


Healthy People – Healthy Community



How would you rate the quality of life in your local community and in all of Solano County?

Quality of Life



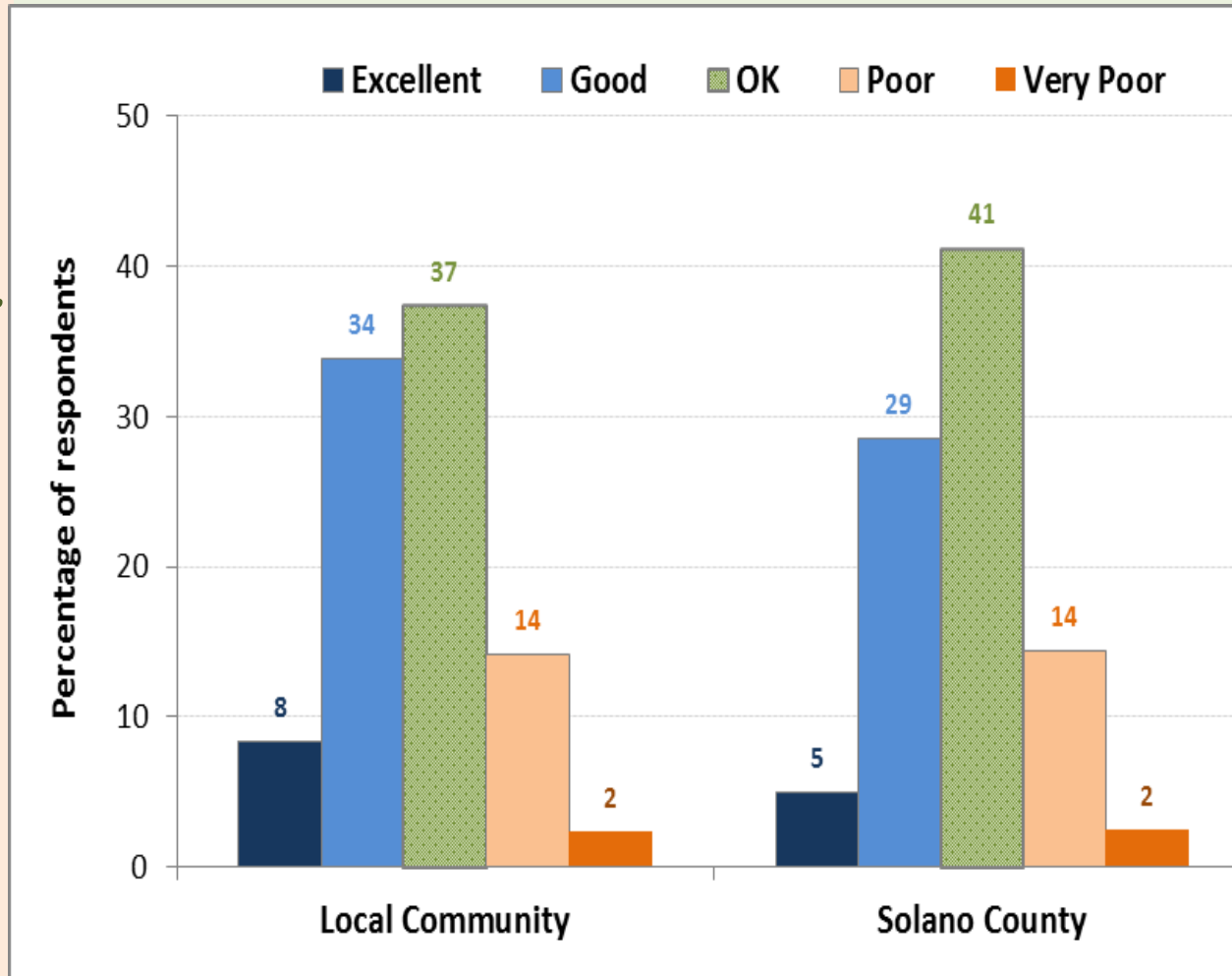
Source: Community Themes and Strengths Assessment, Solano County, 2014

More than half of respondents rated the quality of life in their local community as either “Good” or “Excellent” while less than half rated it similarly for Solano County.



Healthy Community

How would you rate your local community and all of Solano County as a “healthy community”?

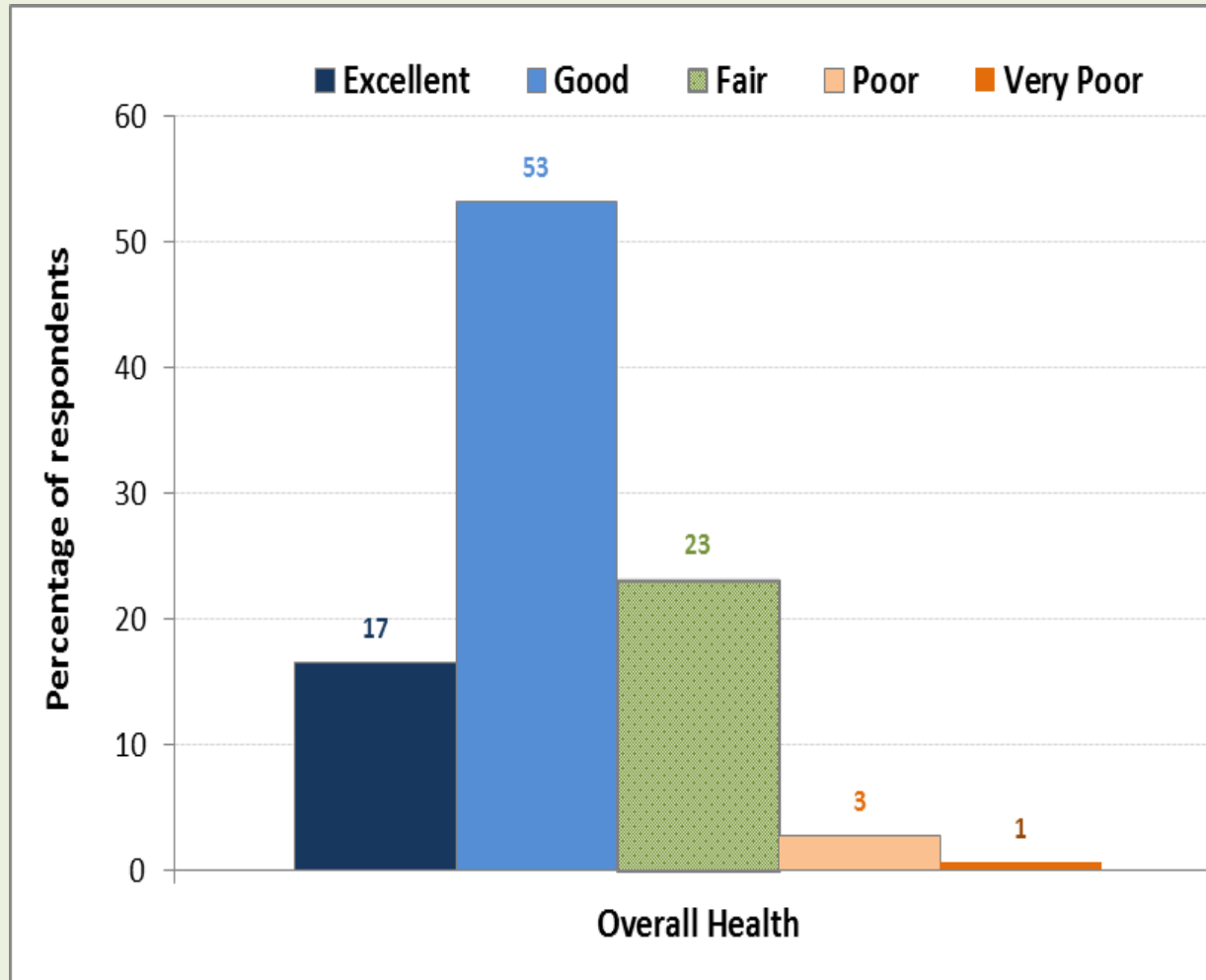


Source: Community Themes and Strengths Assessment, Solano County, 2014

A little over **2/5th** of respondents rated their **local community** as either “**Good**” or “**Excellent**” healthy community; however only **1/3rd** of respondents rated it similarly for **Solano County**.

How would you rate your overall health?

Overall Health



Source: Community Themes and Strengths Assessment, Solano County, 2014

Over **2/3rd** of respondents rated their health as either **“Good”** or **“Excellent”**.

Almost **1/4th** of respondents said that their overall health is **“Fair”**.

Top Three

Health Issues in Your Local Community

3 health issues that most affect local community	Number	Percent
Alcohol/Drug abuse	439	56.7
Obesity	309	39.9
Mental health problems	253	32.7
3 individual behaviors		
Drug abuse	399	51.6
Alcohol abuse	305	39.4
Crime/Violence	208	26.9
3 most important factors of a “healthy community”		
Low crime/safe neighborhoods	324	41.9
Safe place to raise kids	266	34.4
Job opportunities	229	29.6
3 social and economic circumstances		
Unemployment	329	42.5
Poverty	269	34.8
No health insurance	237	30.6
3 environmental issues		
Cigarette smoke	314	40.6
Air pollution	267	34.5
Poor housing conditions	249	32.2

Health-related Themes:

1. Substance abuse
2. Safe neighborhoods/
Crime/ Violence
3. Job opportunities/
Unemployment

Source: Community Themes and Strengths Assessment, Solano County, 2014

Healthy Solano Steering Committee

Visioning



Healthy People – Healthy Community



Visioning

Terminology

- **Mission** – why we exist or what we exist to do
- **Vision** – where we should be headed – our desired end state
- **Strategic Plan** – how we get to our vision

Visioning and Common Values

We would like your help in developing:

- A shared vision to provide us with an overarching goal – a statement of what the ideal future looks like
- Common values - the principles and beliefs – that should guide our planning process

Visioning

- Work in small groups at your tables
- Think about the overarching questions and the specific ones on your handout
- On the yellow paper, write down your group's answers. Select someone to report out.
- Fill out the handout individually, if desired

Common Values

- Work in small groups at your tables
- Select five (or more) key values
- On the yellow paper, write down your group's answers. Select someone to report out.
- Fill out the handout individually, if desired

Thank You

