

# WELCOME



# HEALTHY SOLANO STEERING COMMITTEE

**Solano County Administration Building**  
**February 23, 2015**



*Healthy People – Healthy Community*



# Healthy Solano Steering Committee

Welcome and  
Introductions



*Healthy People – Healthy Community*





## Healthy Solano Steering Committee Meeting

### Agenda

**Date/Time:** February 23, 2015 (2:00 PM – 5:00 PM)

**Location:** 675 Texas Street, Fairfield, CA, Room #1600

**Meeting Purpose:**

1. Promote communication and strategic planning for the Community Health Assessment, in an open and supportive forum.

**Meeting Objectives:**

1. Provide an overview of the “Mobilizing for Action through Planning and Partnerships (MAPP)” process.
2. Introduce the roles and responsibilities of participating on the Healthy Solano Steering Committee.
3. Provide a brief summary of Solano County assessment data.
4. Conduct Visioning process for the Healthy Solano Steering Committee.

Time	Discussion Topic	Facilitator
2:00 PM	Welcome and Introductions	Jayleen Richards
2:05 PM	Meeting Overview	Jayleen Richards
2:10 PM	Review MAPP Process	Meileen Acosta
2:40 PM	Break	
2:50 PM	Steering Committee Roles and Responsibilities	Meileen Acosta
3:05 PM	Review Health Assessment Data	Meileen Acosta Marijoyce Naguit
3:35 PM	Break	
3:45 PM	Visioning & Common Values <ul style="list-style-type: none"> <li>• What is your vision for a Healthy Solano in 10 years?</li> </ul>	Beth Armentano
4:45 PM	Meeting Summary <ul style="list-style-type: none"> <li>• Next Steps</li> </ul>	Jayleen Richards

275 Beek Avenue, P.O. Box 4090, MS 5-240, Fairfield, CA 94533-6804, tel 707 784 8600, fax 707 421 6618

PUBLIC HEALTH DIVISION



Health and Social Services Department

# Agenda



*Healthy People – Healthy Community*



# **MOBILIZING for ACTION through PLANNING and PARTNERSHIPS (MAPP) introduction**

**Meileen Acosta, MPH  
MAPP Steering Committee Kick-Off  
February 23, 2015**



*Healthy People – Healthy Community*



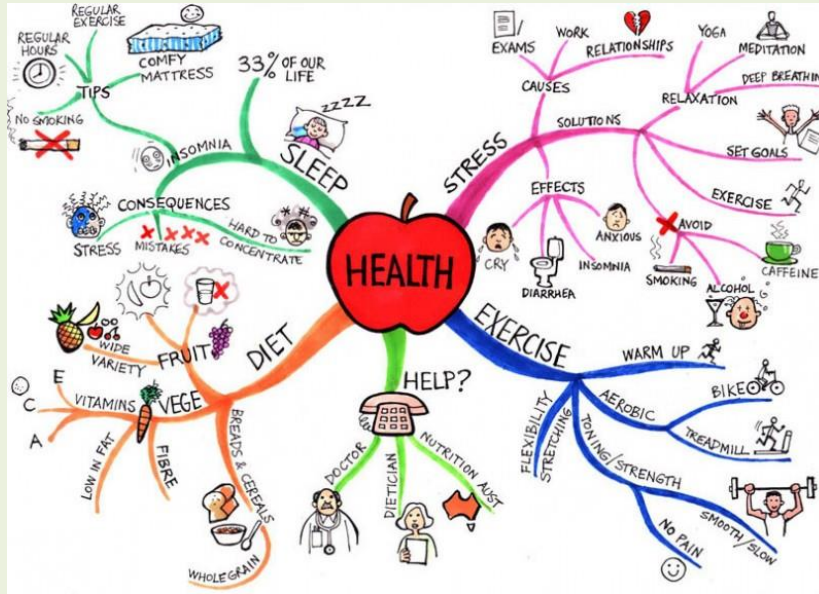
# MAPP

## Outline

- What is MAPP
- MAPP Framework
- MAPP Process
- MAPP Summary
- MAPP Steering Committee Roles and Responsibilities
- MAPP Timeline

# What is health?

Health is...



...a dynamic state of complete **physical, mental, spiritual and social well-being** and not merely the absence of disease or infirmity. (WHO 1946)...

- Public health is “what we as a society do **collectively to assure the conditions** in which people can be healthy.” (IOM 1988)



# Healthy Community

## Developing a Healthy Community

Long-term endeavor

Well planned

Equitable

Grounded in experience



Inclusive

Integrated

Holistic

Community driven

Benefits community

Community supported



*Healthy People – Healthy Community*







*Healthy People – Healthy Community*



# MAPP

## Defined

- **Mobilizing:** Engaging community
- **Action:** Implementing health improvement plan
- **Planning:** Applying strategic planning concepts
- **Partnerships:** Involving local public health system and community partners

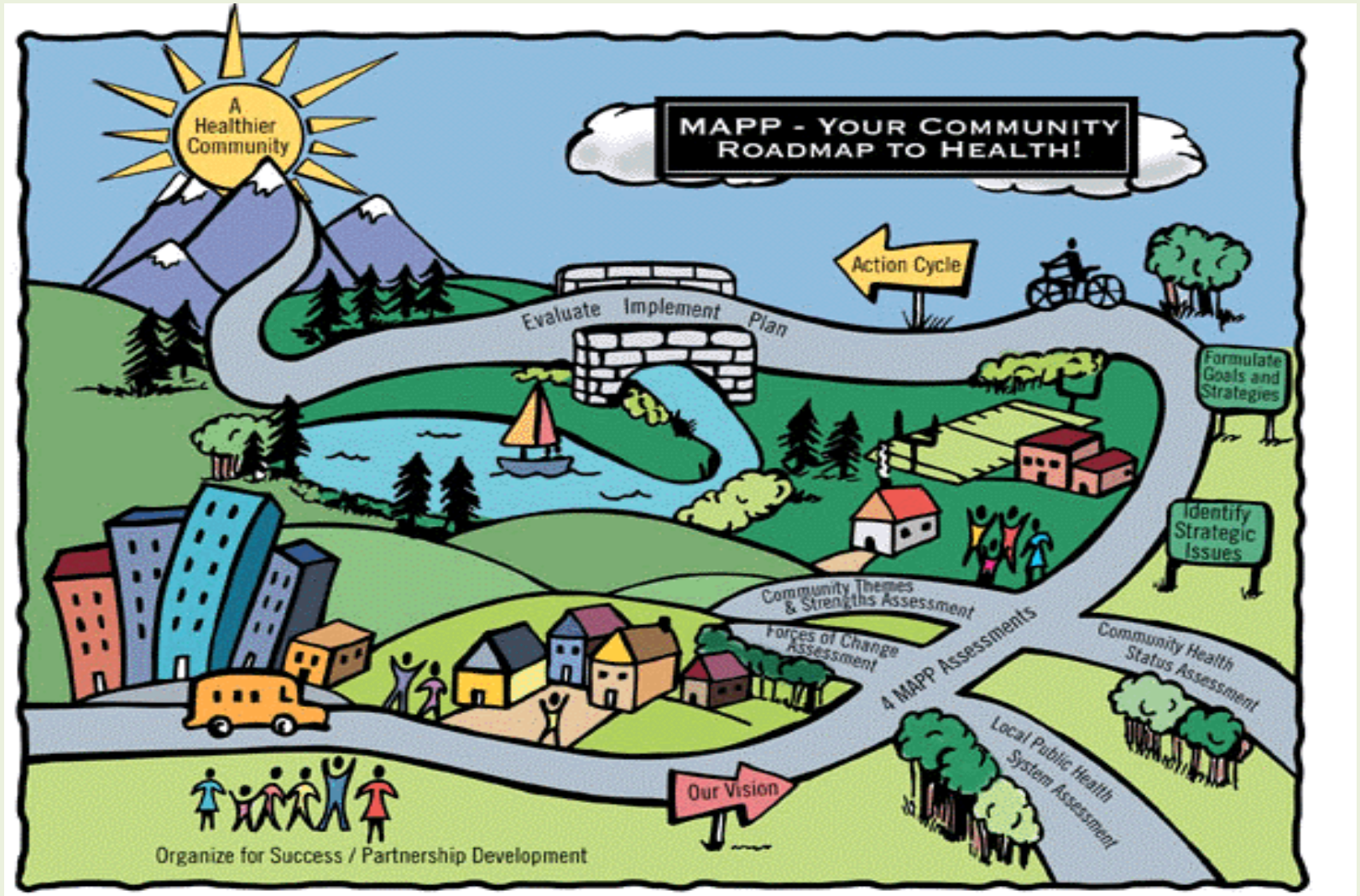
# MAPP

## Framework



# MAPP

# Roadmap





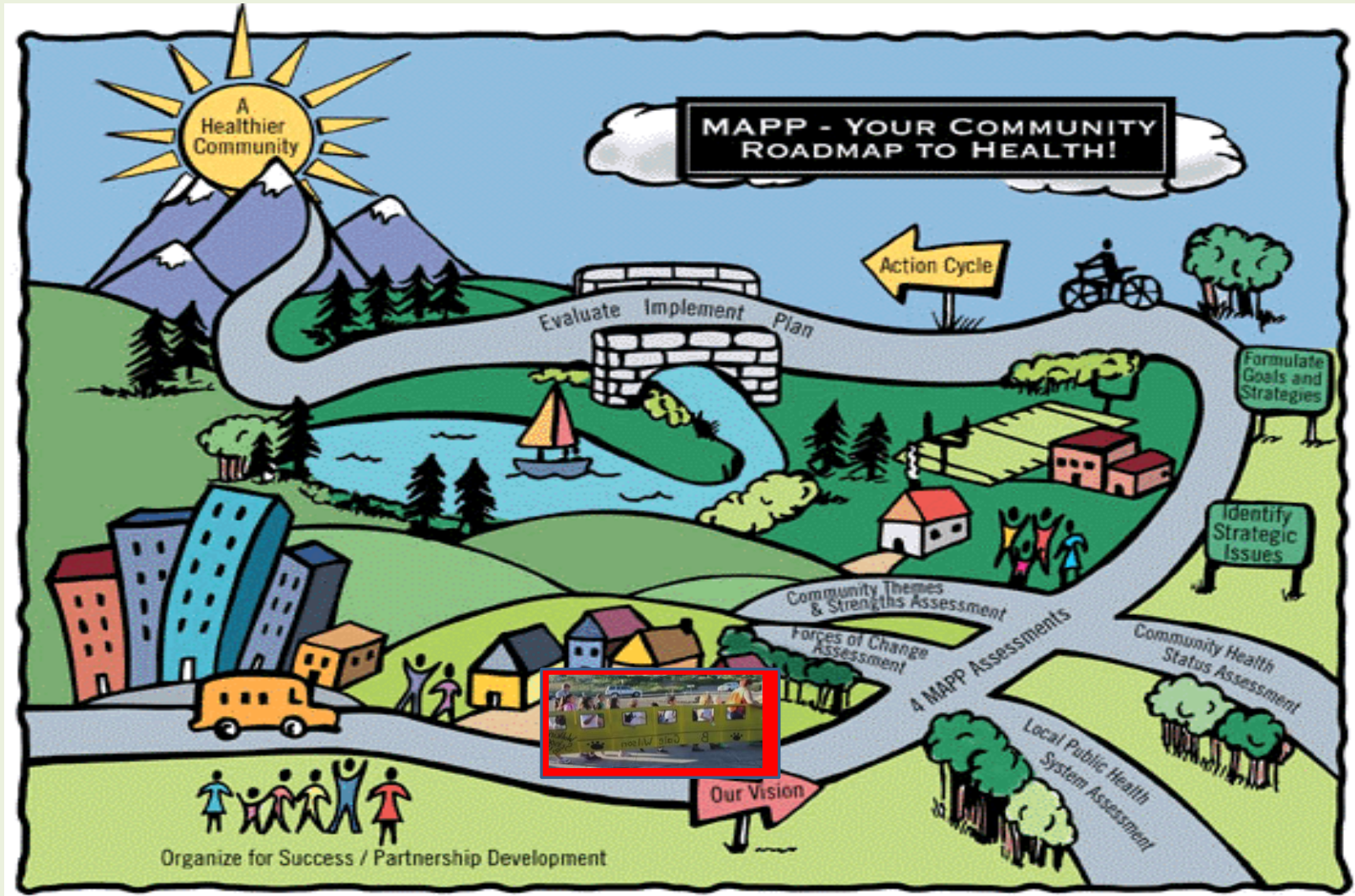
# MAPP Phase 1

Organize for Success/  
Partnership



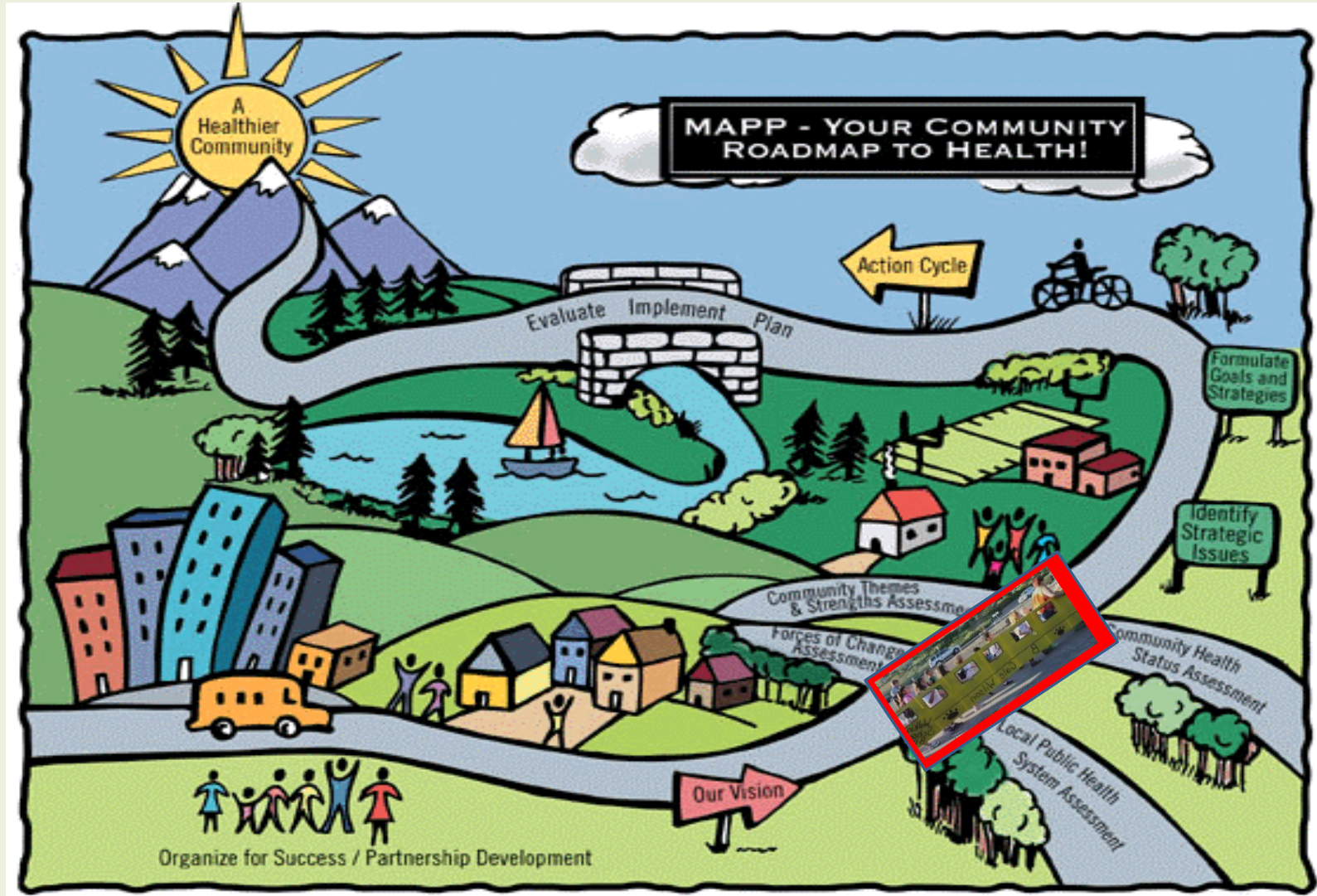
# MAPP Phase 2

Visioning



# MAPP Phase 3

## Four Assessments





# MAPP Phase 3

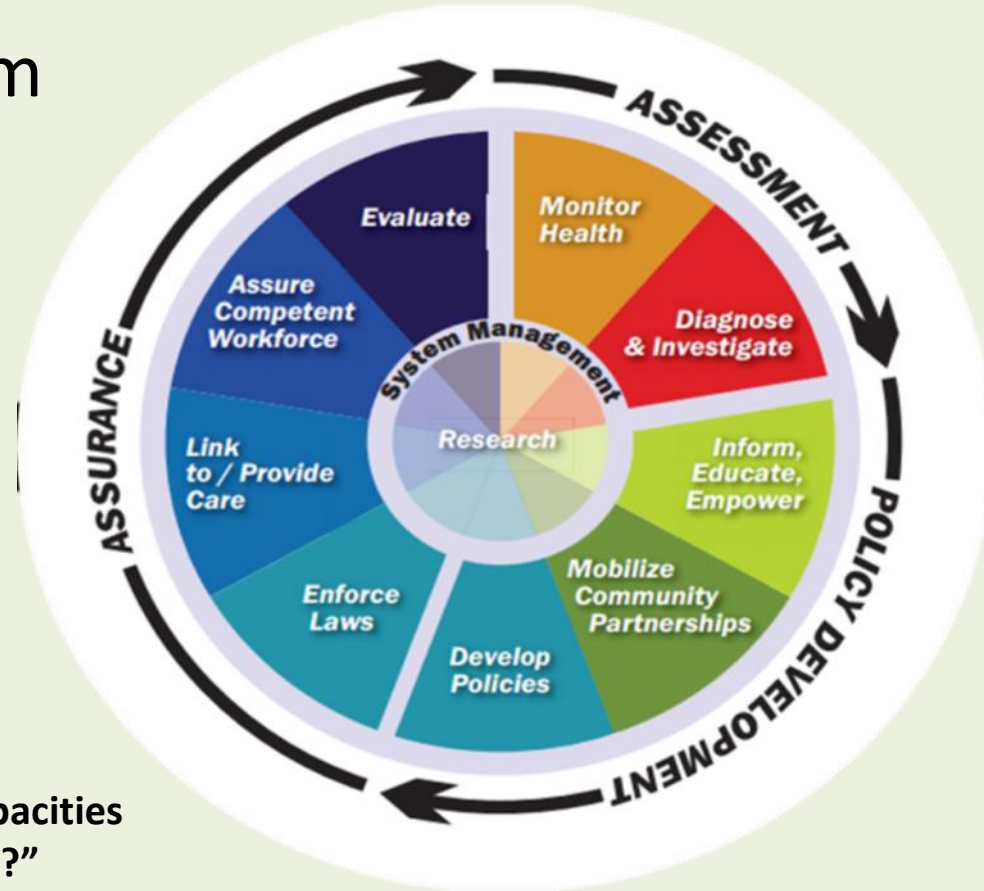
## Forces of Change Assessment (FCA)

- Identifies **external forces** that will be **influencing** the **health** and **quality of life** of the community and the local public health system
- Often **broad issues** with **local impact**

# Local Public Health System Assessment (LPHSA)

## MAPP Phase 3

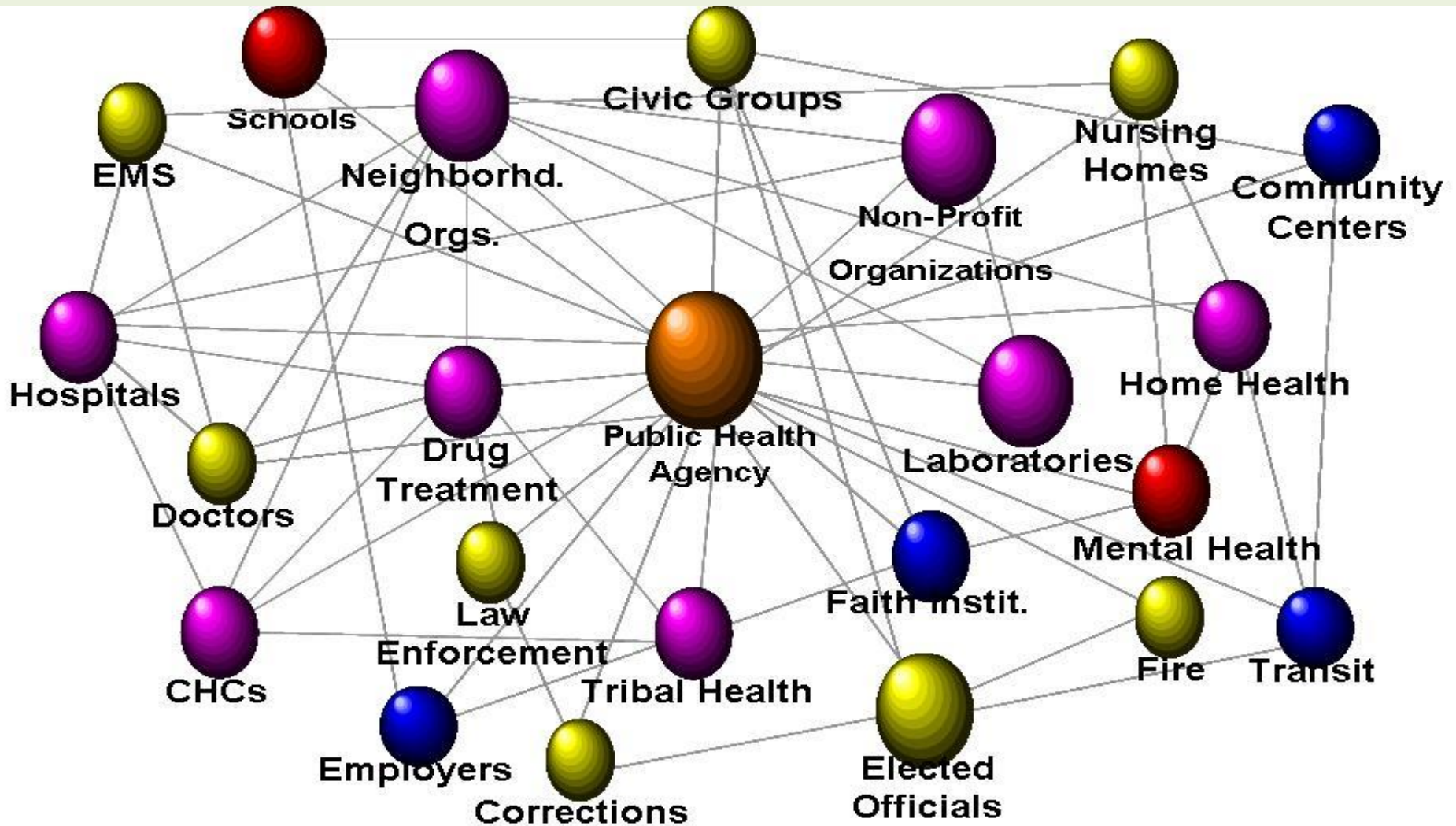
- Participation from all segments of public health system
- Based on 10 Essential Public Health Services



“What are the components, activities, competencies, and capacities of our local public health system?”

“How are the 10 Essential Services of public health being provided to our community?”

# Public Health System



# MAPP Phase 3

## Community Themes and Strengths Assessment (CTSA)

- Deep understanding of **public health issues important to community**
- Identifies **themes** that interest and engage community
- Identifies community **assets**

Accomplished through:

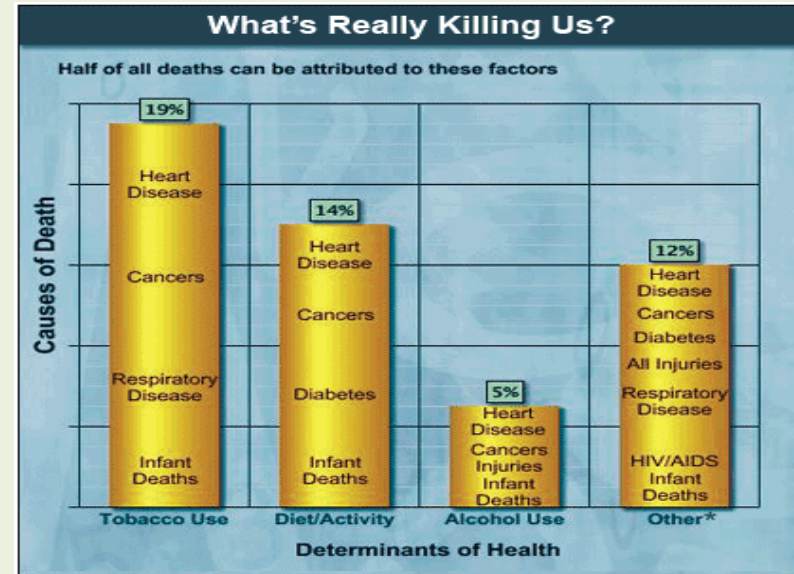
- Community health forums, surveys, meetings
- Local media may be useful



## MAPP Phase 3

Analyzes data about:

- Health status
- Quality of life
- Risk factors

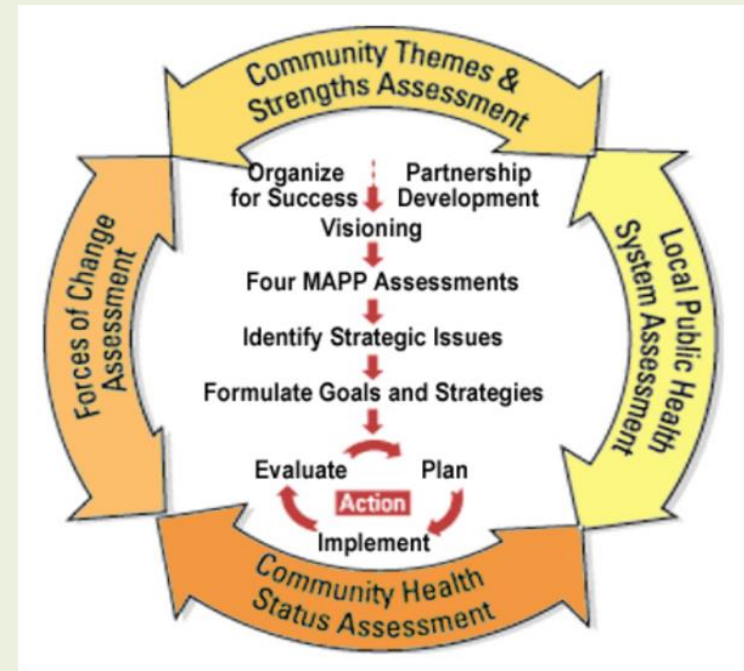


- Specific health issues are identified
- Establish a system to monitor the indicators over time

# Collectively - the Four Assessments

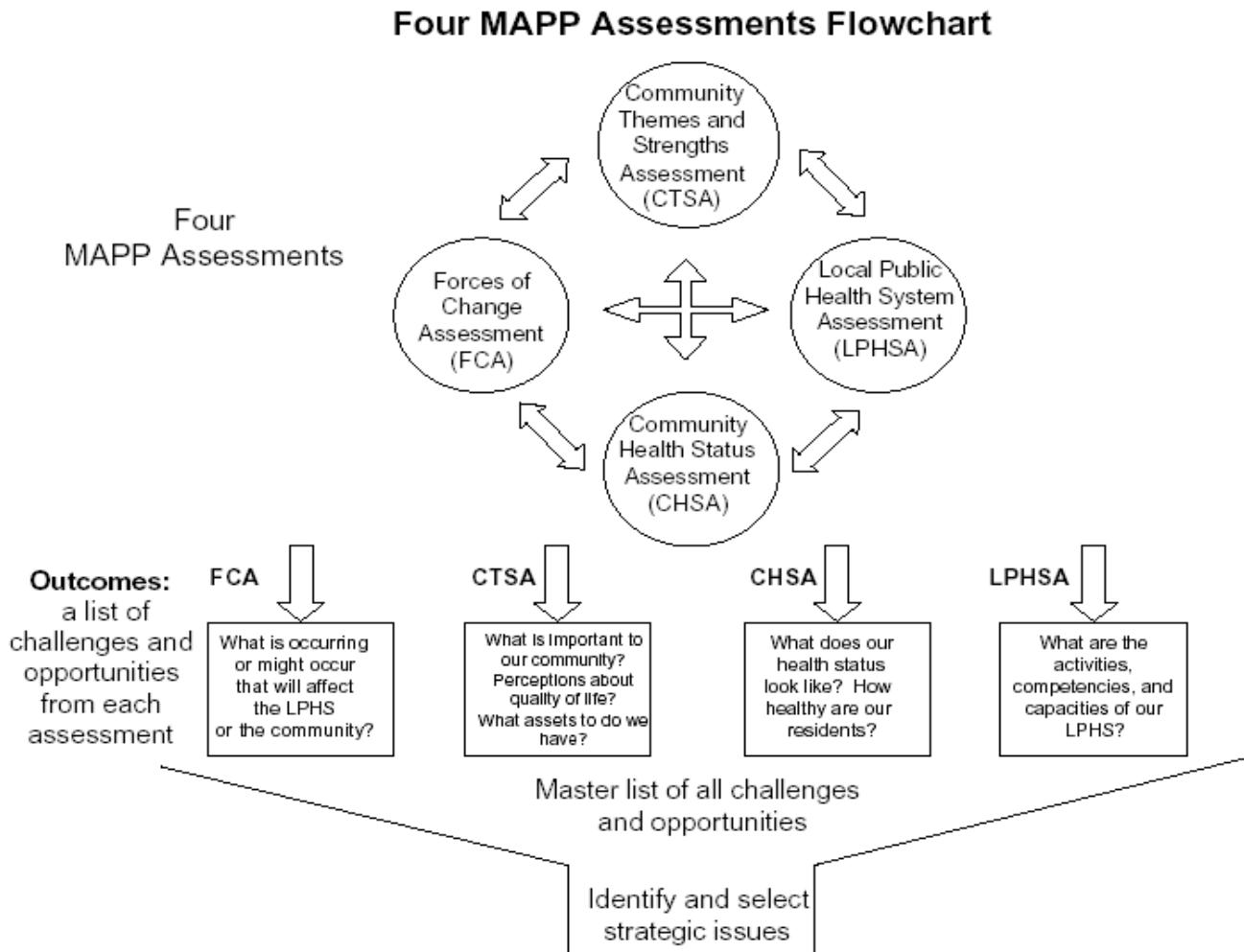
## MAPP Phase 3

- Provide **insight** on the **gaps** between current circumstances and vision
- Source of information for **strategic issues, strategies, and goals**



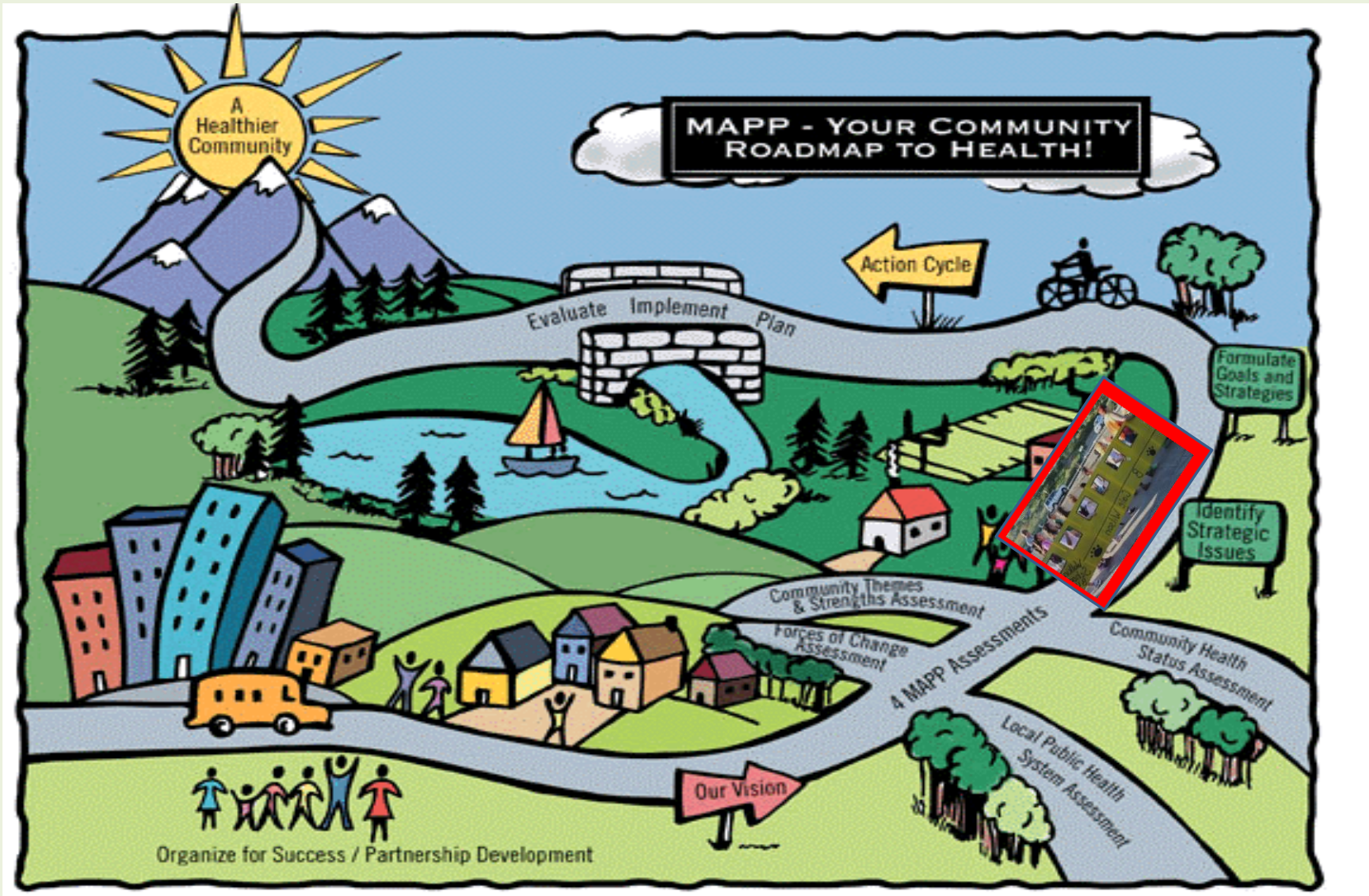
# MAPP Phase 3

## Four MAPP Assessment Flowchart



# MAPP Phase 4

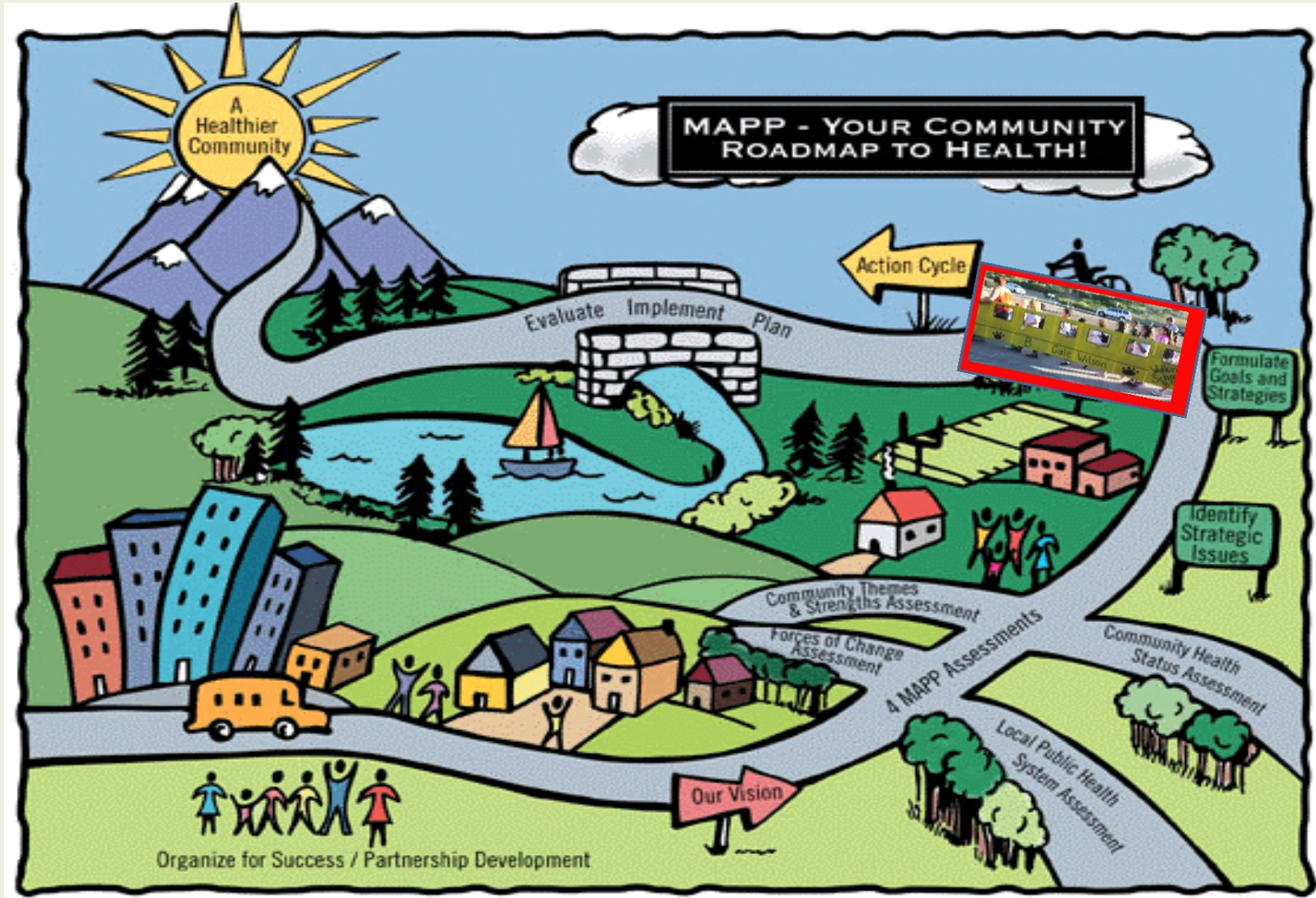
Identify Strategic Issues





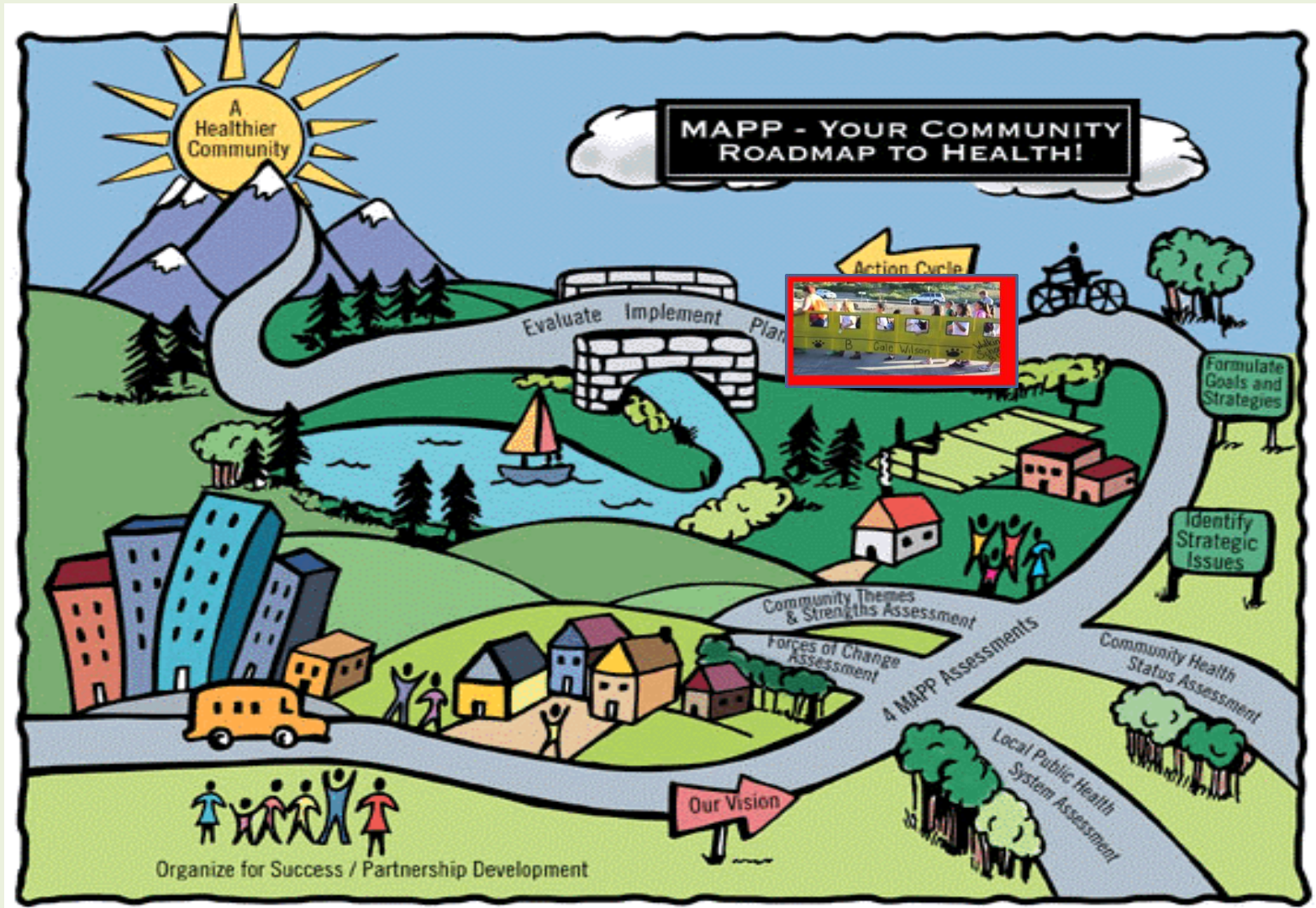
# MAPP Phase 5

## Formulate Goals and Strategies

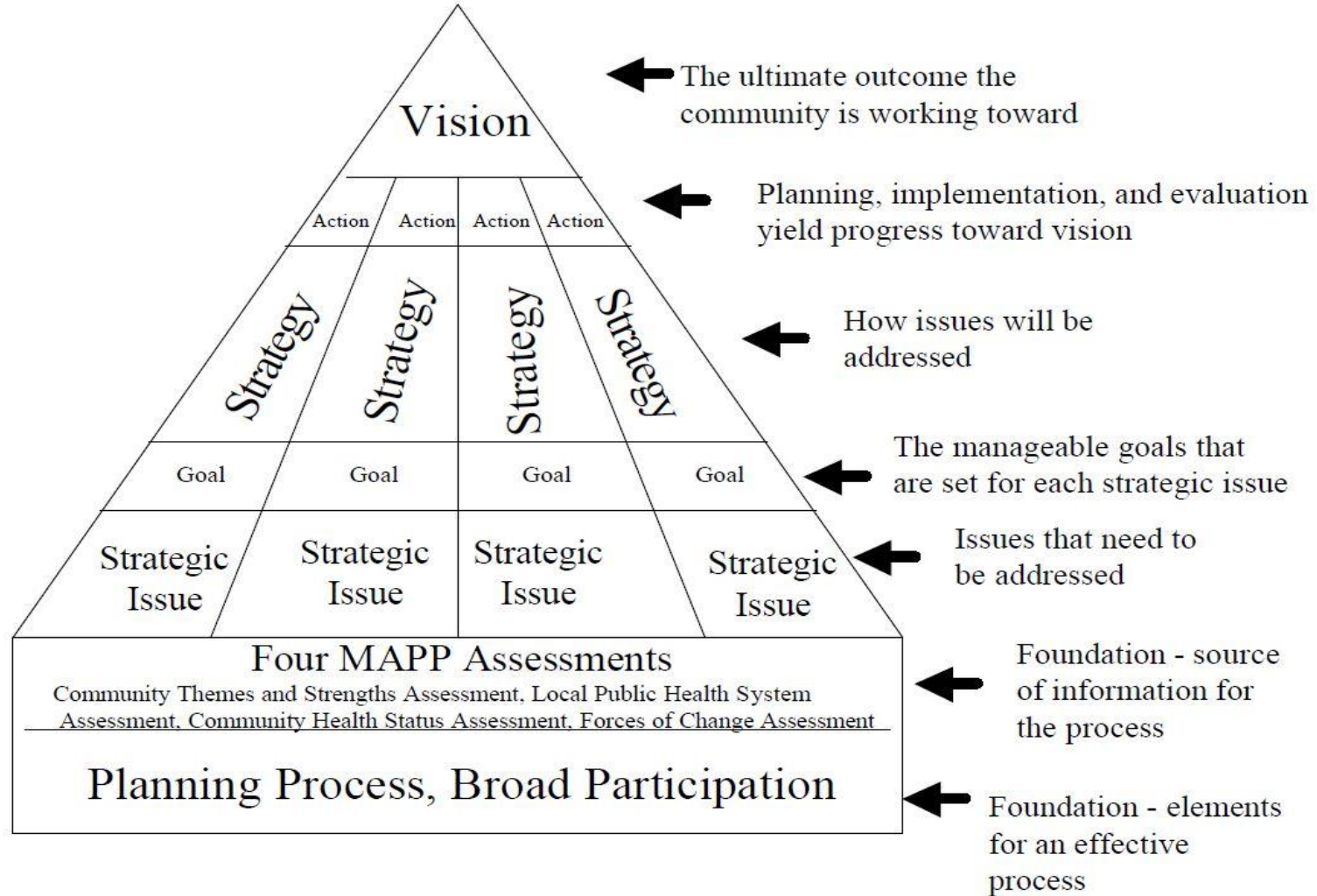


# MAPP Phase 6

Action Cycle:  
Plan, Implement, Evaluate



## How Do the MAPP Components Relate?



# MAPP

## Paradigm Shift

FROM	TO
Operational planning	Strategic Planning
Focus on the agency	Focus on community & entire public health system
Needs assessment	Emphasis on assets and resources
Medically oriented model	Broad definition of health
Agency knows all	Everyone knows something

# Three Keys to MAPP

## MAPP



- Focus on the Local Public Health System
- Strategic Thinking
- Community Driven Process

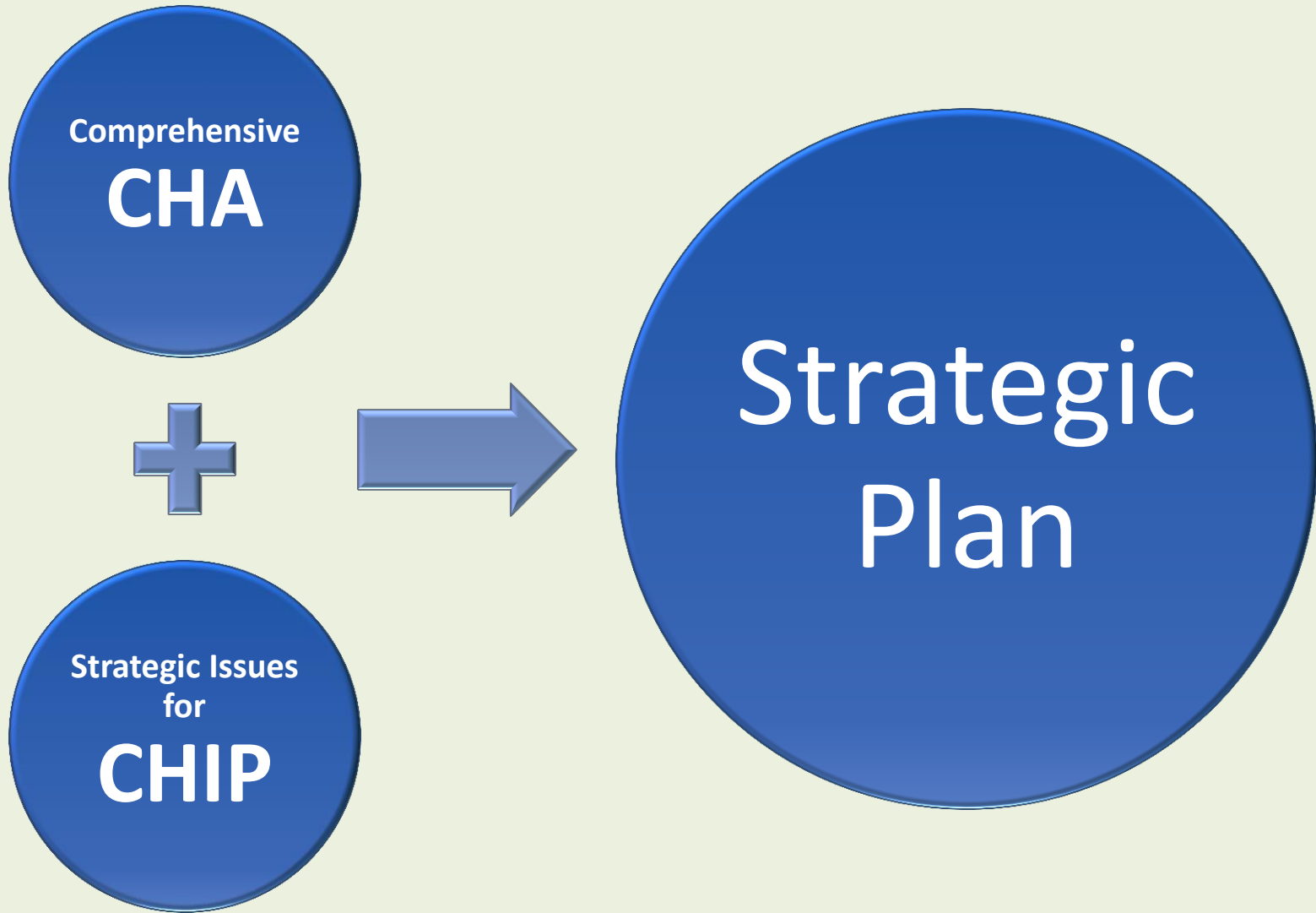
# MAPP

## Benefits

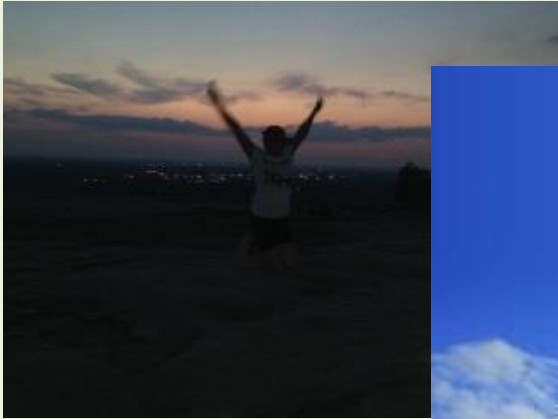
- Increased recognition
- Access to data
- Stronger public health system infrastructure
- Reduced duplication of services
- Increased financial resources
- Stronger project proposal
- Creates advocates
- Creates a healthy community

MAPP Products and Relationship to Public Health (System) Accreditation

# MAPP



# CELEBRATE SUCCESSSES



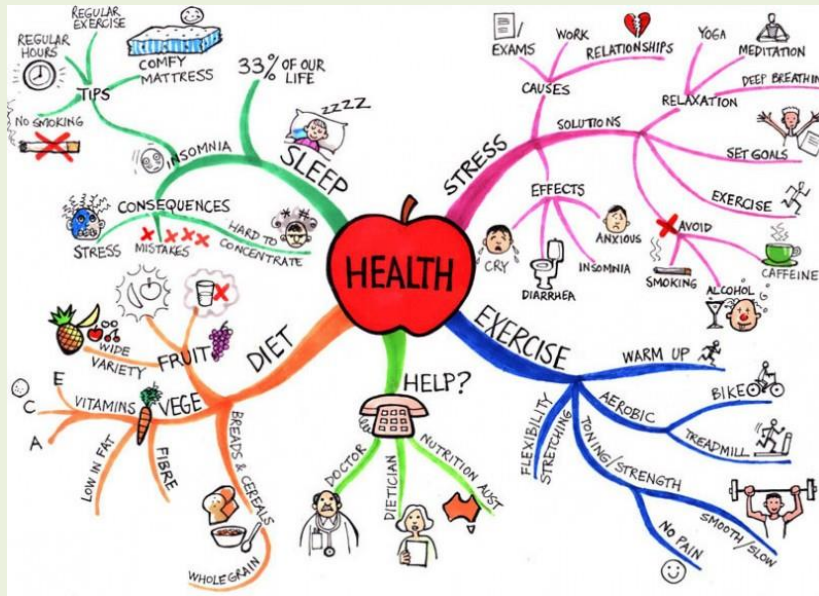
*Healthy People – Healthy Community*





# What is health?

Health is...



...a dynamic state of complete **physical, mental, spiritual and social well-being** and not merely the absence of disease or infirmity (WHO 1946)...

- Public health is “what we as a society do **collectively to assure the conditions** in which people can be healthy.” (IOM 1988)



Healthy Solano

# MAPP - YOUR COMMUNITY ROADMAP TO HEALTH!

Action Cycle

Evaluate Implement Plan

Formulate Goals and Strategies

Identify Strategic Issues

Community Themes & Strengths Assessment

Forces of Change Assessment

4 Mapp Assessments

Community Health Status Assessment

Local Public Health System Assessment

Our Vision



Organize for Success / Partnership Development

Healthy Solano

# MAPP - YOUR COMMUNITY ROADMAP TO HEALTH!

Action Cycle

Evaluate Implement Plan

Formulate Goals and Strategies

Identify Strategic Issues

Community Themes & Strengths Assessment

Forces of Change Assessment

4 Mapp Assessments

Community Health Status Assessment

Local Public Health System Assessment

Our Vision

Organize for Success / Partnership Development



Healthy Solano

# MAPP - YOUR COMMUNITY ROADMAP TO HEALTH!

Action Cycle

Evaluate Implement Plan

Formulate Goals and Strategies

Identify Strategic Issues

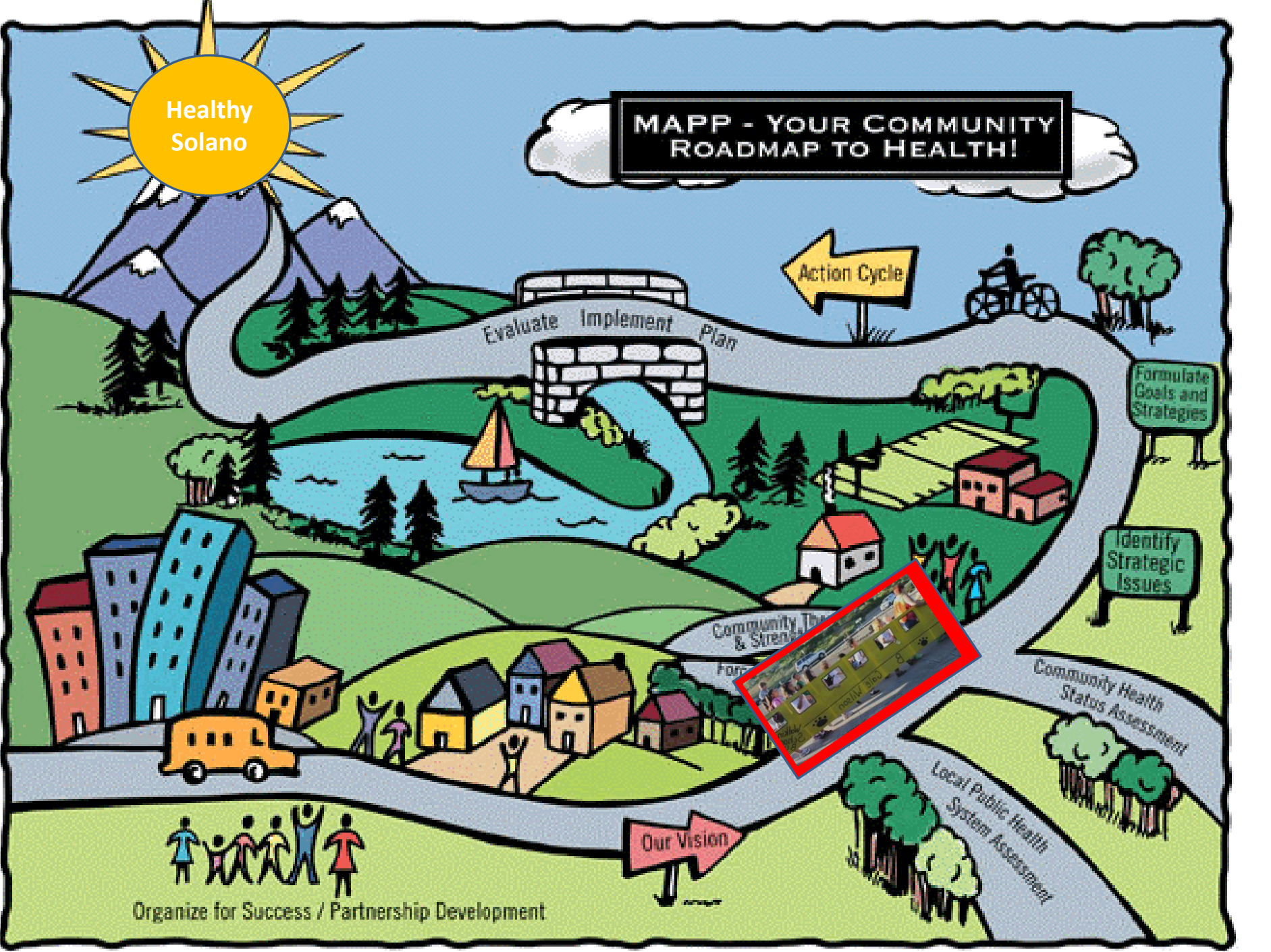
Community Health & Strength

Community Health Status Assessment

Local Public Health System Assessment

Our Vision

Organize for Success / Partnership Development



Healthy Solano

# MAPP - YOUR COMMUNITY ROADMAP TO HEALTH!

Action Cycle

Evaluate Implement Plan

Formulate Goals and Strategies

Identify Strategic Issues

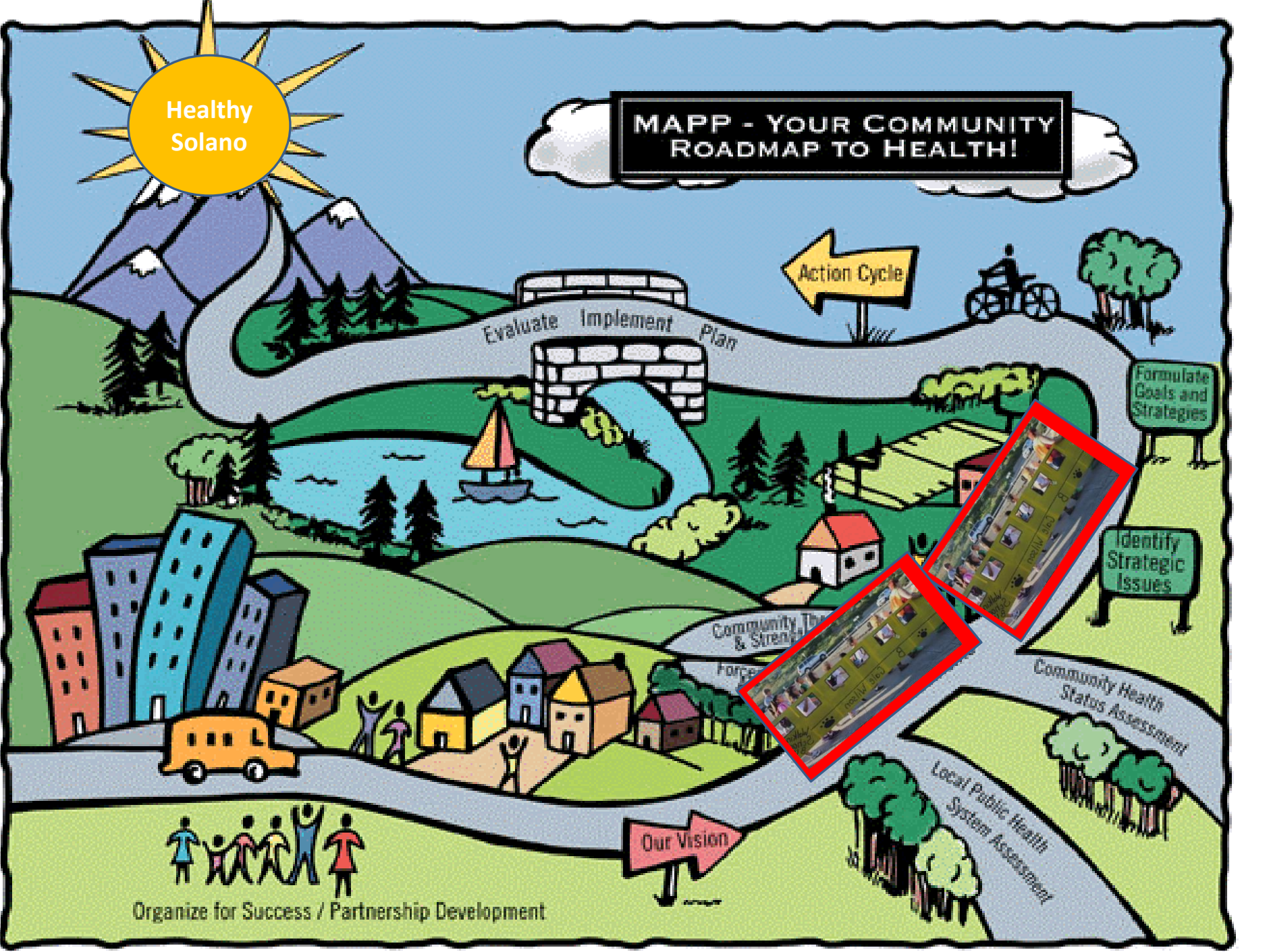
Community Health & Strength Forces

Community Health Status Assessment

Local Public Health System Assessment

Our Vision

Organize for Success / Partnership Development



Healthy Solano

# MAPP - YOUR COMMUNITY ROADMAP TO HEALTH!

Action Cycle

Evaluate Implement Plan

Formulate Goals and Strategies

Identify Strategic Issues

Community Themes & Strengths Assessment

Forces of Change Assessment

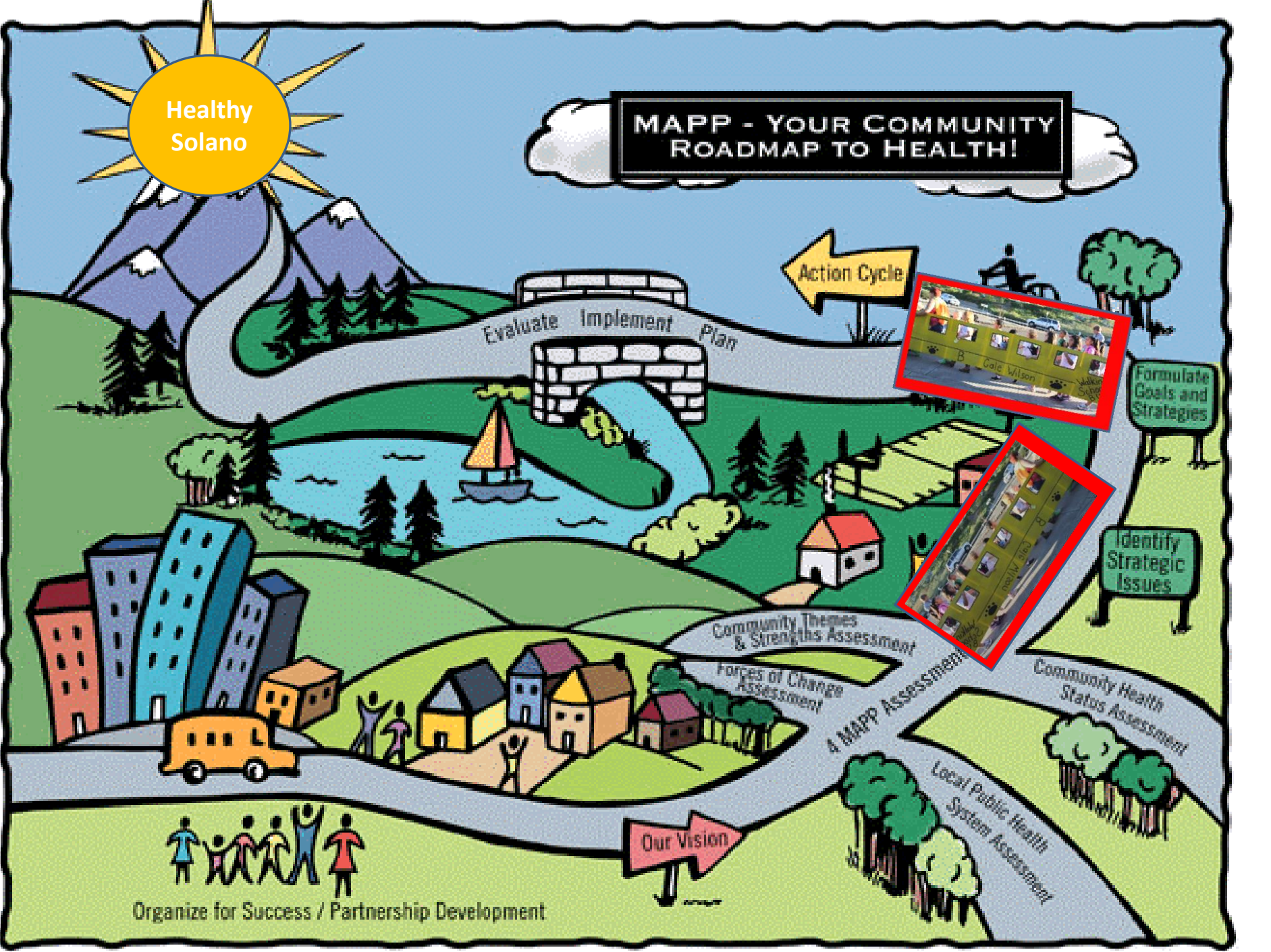
4 Mapp Assessment

Community Health Status Assessment

Local Public Health System Assessment

Our Vision

Organize for Success / Partnership Development



Healthy Solano

# MAPP - YOUR COMMUNITY ROADMAP TO HEALTH!



Evaluate Implement Plan

Formulate Goals and Strategies

Identify Strategic Issues

Community Themes & Strengths Assessment

Forces of Change Assessment

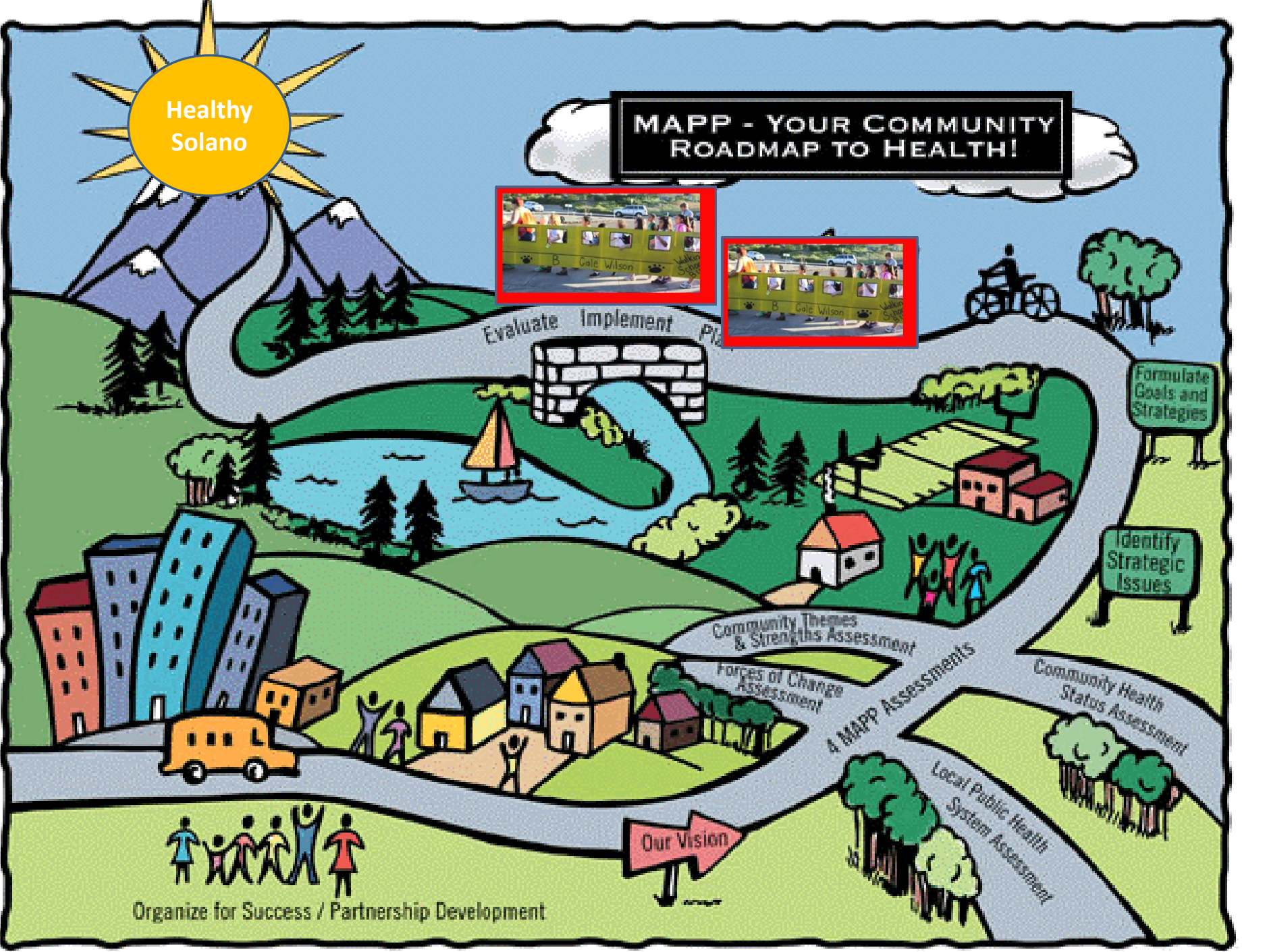
4 Mapp Assessments

Community Health Status Assessment

Local Public Health System Assessment

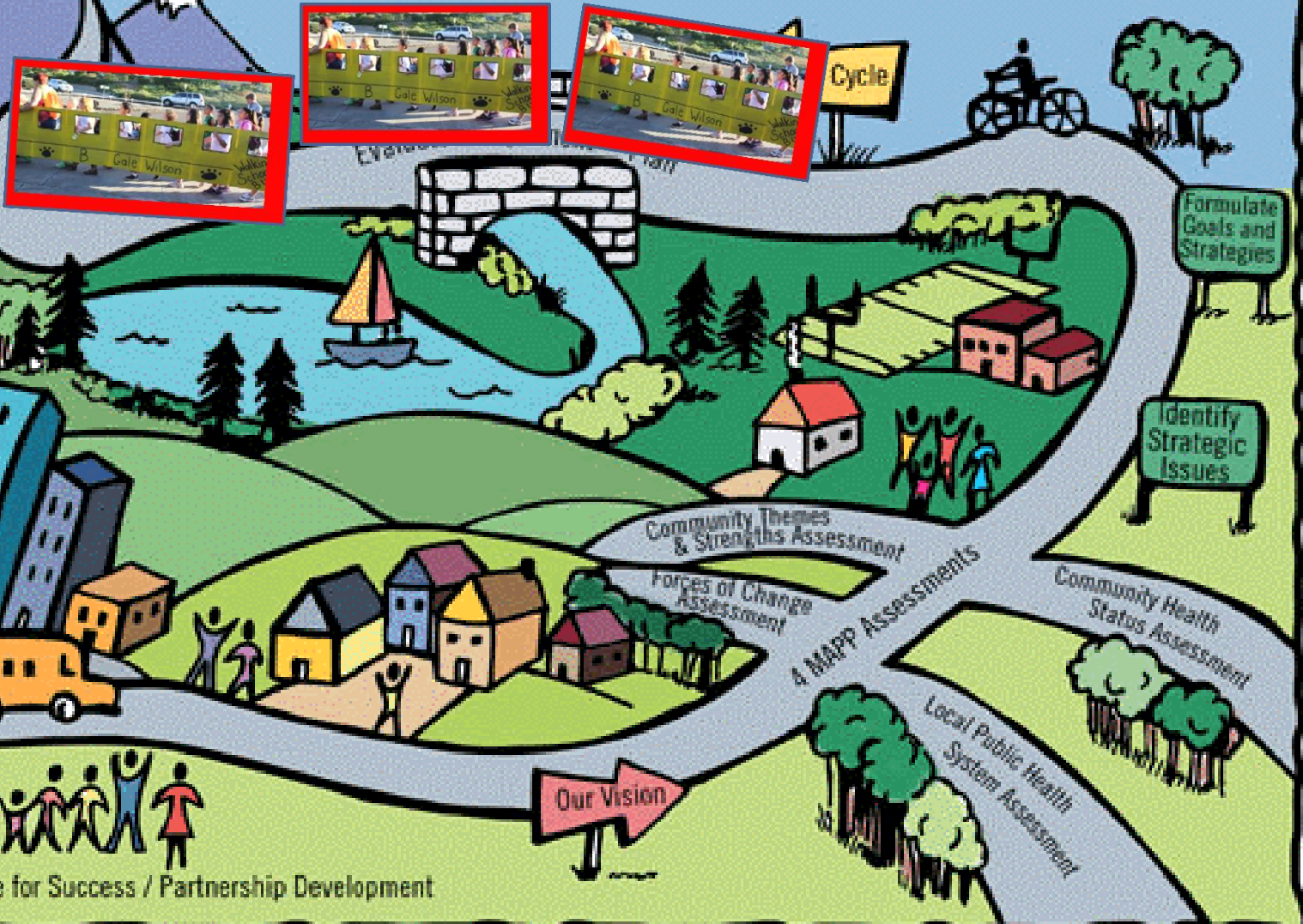
Our Vision

Organize for Success / Partnership Development



Healthy Solano

# MAPP - YOUR COMMUNITY ROADMAP TO HEALTH!





# MAPP Steering Committee

## Roles and Responsibilities

MAPP Phase	Steering Committee Role
1. Organize for Success/Partnership Development	<ul style="list-style-type: none"> <li>• Provide input into recruits</li> <li>• Approve plan for MAPP process</li> <li>• Identify additional partners</li> </ul>
2. Visioning	<ul style="list-style-type: none"> <li>• Oversee and participate</li> <li>• Develop plan for gaining broad participation</li> <li>• Identify community representatives</li> </ul>
3. Four Assessments	<ul style="list-style-type: none"> <li>• Oversee subcommittee activities</li> <li>• Participate in assessments</li> <li>• Identify data sources/select indicators for CHSA</li> <li>• Discuss results</li> </ul>
4. Identify Strategic Issues	<ul style="list-style-type: none"> <li>• Participate in meetings</li> <li>• Discuss/Approve strategic issues</li> </ul>
5. Formulate Goals and Strategies	<ul style="list-style-type: none"> <li>• Participate in meetings</li> <li>• Discuss/Approve goals and strategies</li> </ul>
6. The Action Cycle	<ul style="list-style-type: none"> <li>• Oversee action planning, implementation and evaluation</li> </ul>



*Healthy People – Healthy Community*



# MAPP Steering Committee<sup>42</sup>

Participate as one of the  
**domain champions** for  
public health accreditation

# MAPP Timeline

MAPP Phase / Description of Activity	Month (2015-2016)																	Completed	
	Feb	Mar	Apr	May	Jun	Jul	Aug	Sep	Oct	Nov	Dec	Jan	Feb	Mar	Apr	May	Jun		Jul
Phase 1: Organize for Success / Partnership Development	█	█	█	█															
Phase 2: Visioning	█	█	█	█															
Phase 3: 4 MAPP Assessments	█	█	█	█	█	█	█	█	█										
Phase 3.a: Community Themes and Strengths Assessment	█	█	█	█	█	█	█												
Phase 3.b: Local Public Health System Assessment							█	█	█	█									
Phase 3.c: Forces of Change Assessment		█	█	█	█	█													
Phase 3.d.: Community Health Status Assessment	█	█	█	█	█	█	█												
Phase 4: Identify Strategic Issues											█	█	█	█	█	█	█	█	
Phase 5: Formulate Goals and Strategies																	█	█	█
Phase 6: The Action Cycle																█	█	█	█



*Healthy People – Healthy Community*

