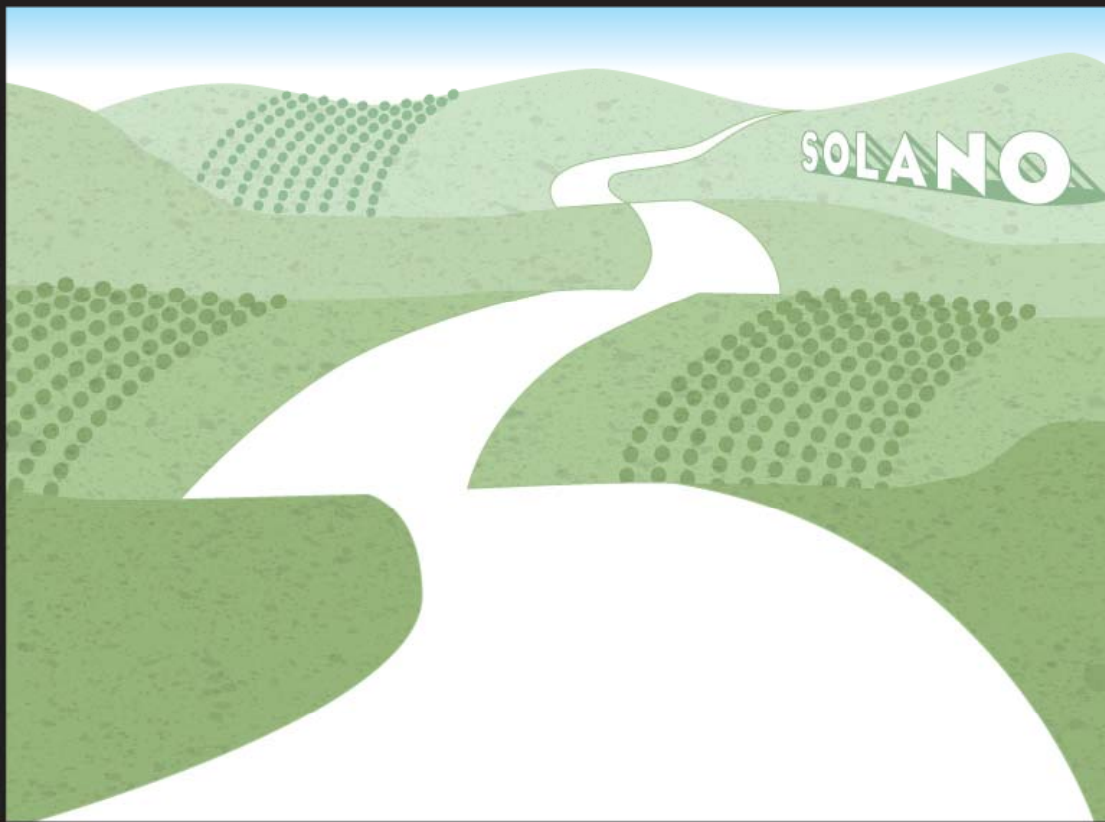


**SENIOR AND  
DISABLED  
TRANSPORTATION  
SUMMIT**



**FRIDAY, JUNE 26, 2009**

**Solano Transportation  
Authority**

**Metropolitan  
Transportation  
Commission**

**County of Solano**

**Senior Coalition  
of Solano County**

A stylized illustration of a landscape with rolling green hills under a light blue sky. A white river winds through the center. On the right, the word "SOLANO" is written in large, white, block letters with a slight shadow. On the left, a hillside is covered in a pattern of small green dots.

SOLANO

**The only limit to our  
realization of tomorrow will  
be our doubts of today.**

**Franklin Delano Roosevelt**



A stylized landscape illustration featuring rolling green hills and a winding white river. The hills are rendered in various shades of green, with some areas filled with a pattern of small dark green dots. The sky is a light blue gradient. The word "SOLANO" is written in white, bold, sans-serif capital letters on a hillside in the upper right.

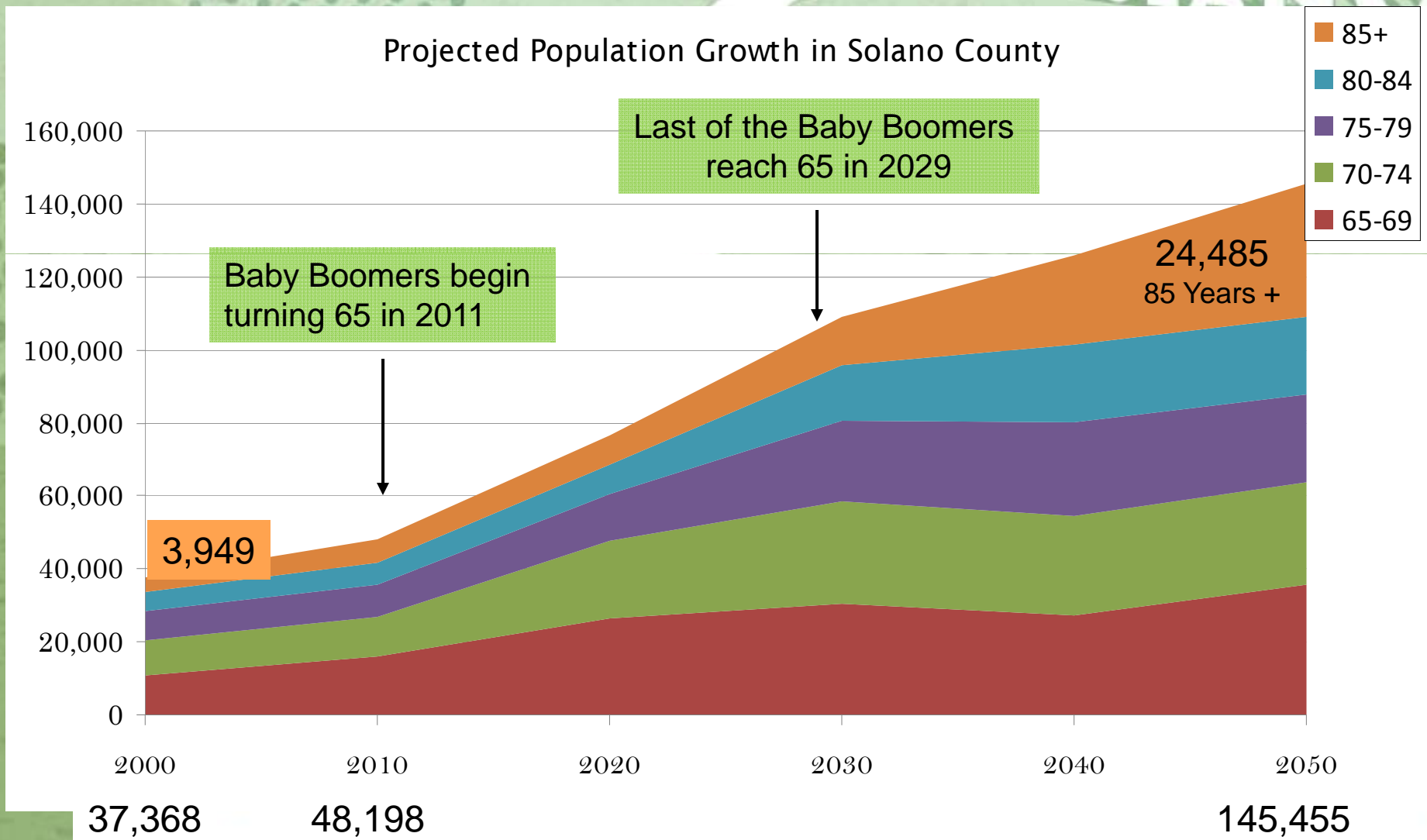
SOLANO

# DEMOGRAPHICS

# Population of Older Adults

SOLANO

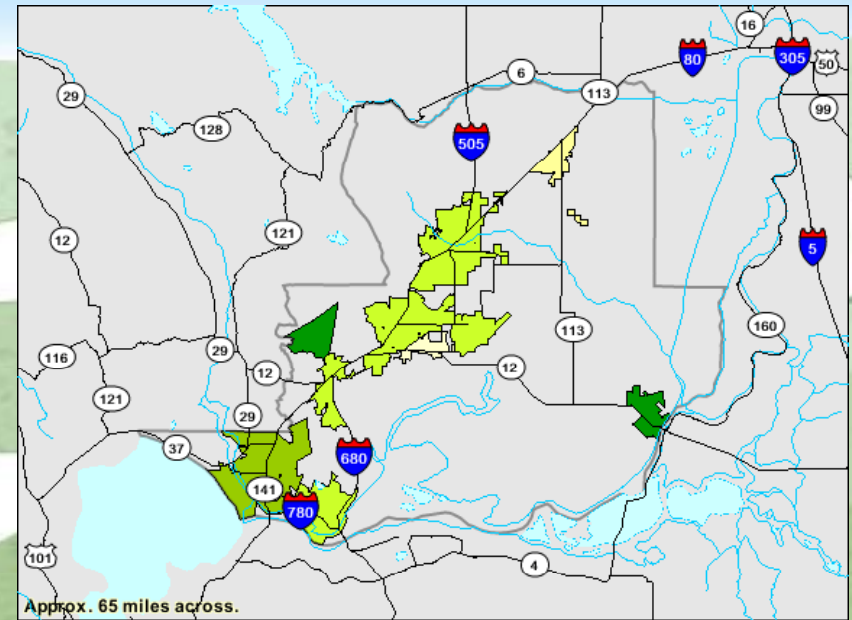
Projected Population Growth in Solano County





# Population by Location

9% of the population in Solano County was 65 + (2000)

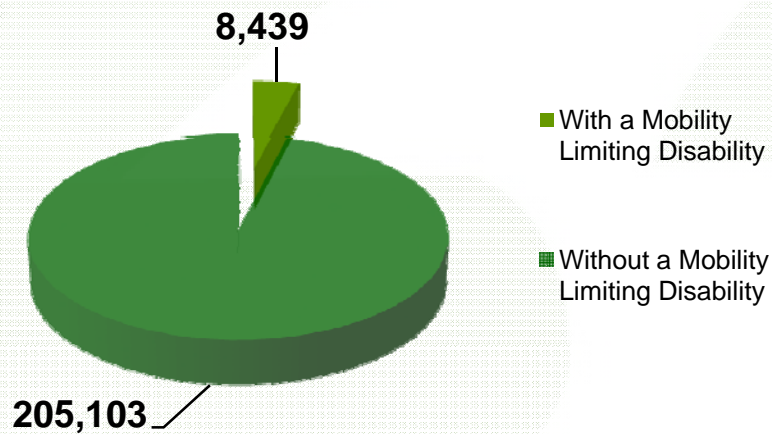


City/Place	Number of Older Adults	Number of Older Adults as a Percentage of Population
Vallejo	13,077	11.2%
Fairfield	8,656	9%
Vacaville	7,356	8.3%
Benicia	2,498	9.3%
Dixon	1,159	7.2%
Suisun	1,489	5.7%
Rio Vista	900	19.7%

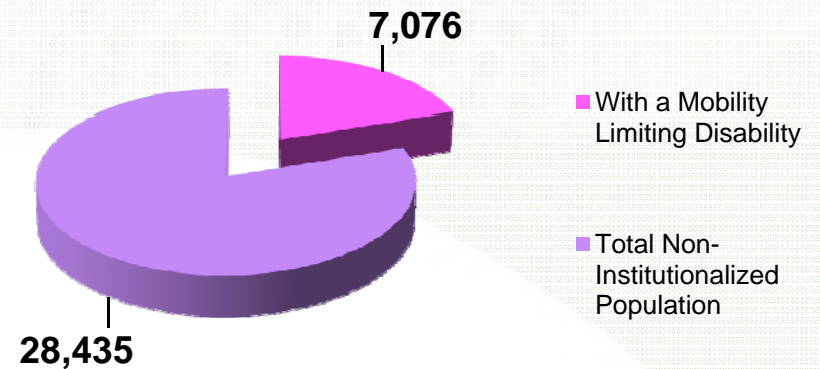
# Population of Disabled Individuals

## SOLANO

Population of Non-Institutionalized Individuals **Ages 21-64** In Solano County - 2000



Population of Non-Institutionalized Individuals **Ages 65+** In Solano County - 2000



15,515 individuals with a mobility limiting disability



A stylized landscape illustration featuring rolling green hills and a winding white river. The hills are rendered in various shades of green, with some areas filled with a pattern of small green dots. The sky is a light blue gradient. The word "SOLANO" is written in white, bold, sans-serif capital letters on a hill in the upper right.

SOLANO

# SURVEY RESULTS



# Survey Responses

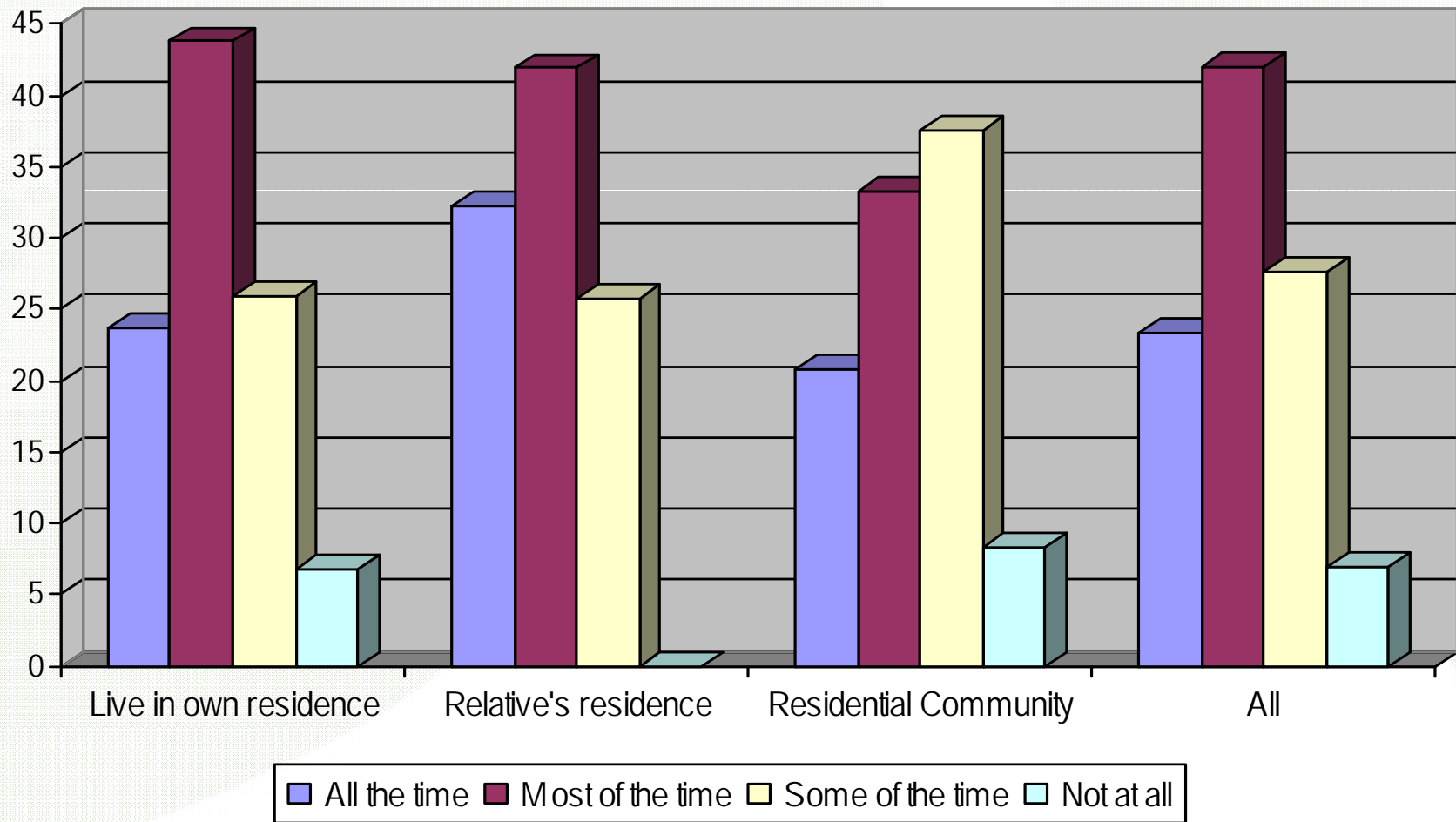
SOLANO

- **425 users, 15 providers**
- **81.1% of respondents adults 56 or older**
- **All communities surveyed**
  - Users in Dixon, Travis AFB, Rio Vista and unincorporated Solano County under represented
- **Majority live “independently”**
  - 62% live in own residence
  - 14% in residential community
  - 10% in home of a relative

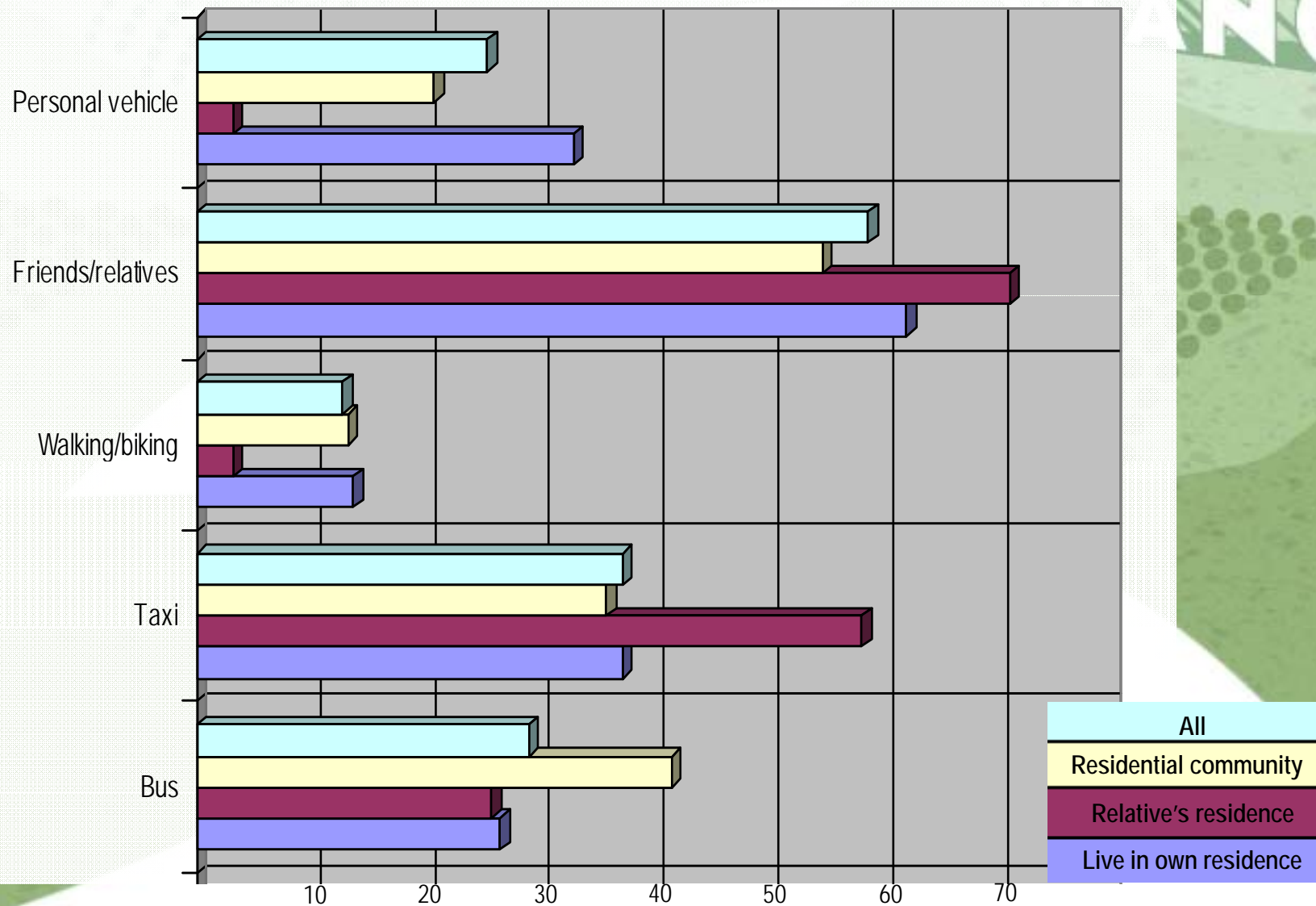
# Meeting Transportation Needs

SOLANO

## ■ Making available options work for them



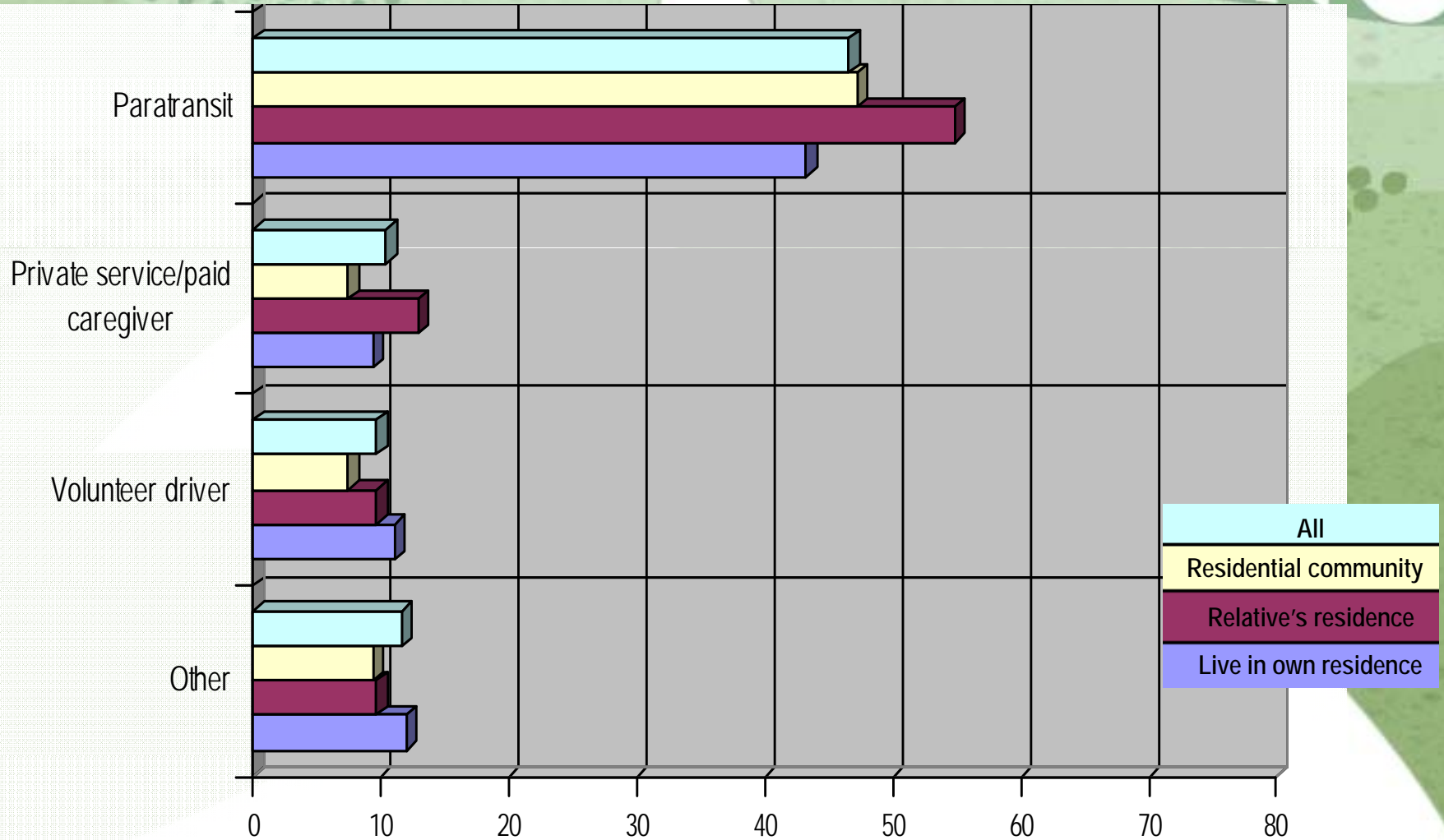
# Use of Transportation Options





# Use of Transportation Options

SOLANO



# Key Issues: Personal Vehicle

SOLANO

- **Provides most independence**
- **Option not available due to various impairments**
  - Fear of freeway driving
  - Poor eyesight
  - Medical conditions, medications
- **Expensive to maintain, insure and gas**
- **Access, wheelchair limitations**

*Availability ... Reliability ... Independence*

# Key Issues: Friends/Relatives

SOLANO

- **Door-to-door service**
- **Feel like they are imposing**
- **Competition with work schedules**
- **Access, wheelchair limitations**

*Availability ... Reliability ... Independence*



# Key Issues: Taxi

SOLANO

- **Door-to-door service**
- **Expensive, especially to other cities**
- **Wait times, arrival times**
- **Not always available**
- **Awareness of subsidized programs**
- **Access, wheelchair limitations**

*Availability ... Reliability ... Independence*

# Key Issues: Bus

SOLANO

- **Distance to and from bus stops**
  - Physical ability to get to bus stops (walking and wheelchair)
  - No bench to sit on at bus stops
- **Proximity of bus stops to medical, shopping, grocery**
- **Transfers and connections**
- **Wait times between buses**
- **Time commitment**

*Availability ... Reliability ... Independence*



# Key Issues: Bus

- **Missed appointments**
- **Appointments outside of service times**
- **Appointments in other communities**
- **Destinations not served**
- **Getting purchases home**
- **Confusing schedules, routes**
- **Access, wheelchair limitations**

*Availability ... Reliability ... Independence*



# Key Issues: Paratransit

SOLANO

- Ride not always available
- Advance scheduling (7 days to 24 hours)
- Arrival times
- Riders stranded at destination
- Missed appointments
- Appointments outside of service times
- Destinations in other cities
- Time commitment
- Getting purchases home

*Availability ... Reliability ... Independence*

# Key Issues: Private/Volunteer

SOLANO

## ■ Private services

- Awareness of services
- Cost a factor
- Ride availability

## ■ Volunteer drivers

- Limits on where they can go
- Ride availability
- Scheduling

*Availability ... Reliability ... Independence*



# Users Summary

SOLANO

- **Appreciative of services available**
  - Concern over services being cut
- **Lack ability to get where, when and on a schedule they want**
- **Expense has to be balanced with time constraints**
- **Lack of clarity in rules, actual available options**

*Availability ... Reliability ... Independence*

# Key Issues: Providers

- **Lack of funding**
  - Existing funding in jeopardy
- **Rising cost of fuel, maintenance, insurance**
- **Limited number of vehicles, drivers**
  - Increasing number of seniors, disabled individuals
  - Volunteers not wanting liability risks

*Availability ... Reliability ... Independence*



# Key Issues: Providers

SOLANO

- **Vehicle accessibility**
  - Being able to get in, wheelchair access
- **Lack of coordination between paratransit systems**
- **Staying on transportation schedule**
  - Medical appointments run early or late
  - Traffic congestion
  - Passenger no-shows
  - Perceived lack of customer service

*Availability ... Reliability ... Independence*

A stylized landscape illustration featuring rolling green hills and a winding white river. The hills are rendered in various shades of green, with some areas filled with a pattern of small green dots. The sky is a light blue gradient. The word "SOLANO" is written in white, bold, sans-serif capital letters on a hillside in the upper right.

SOLANO

**QUESTIONS?**