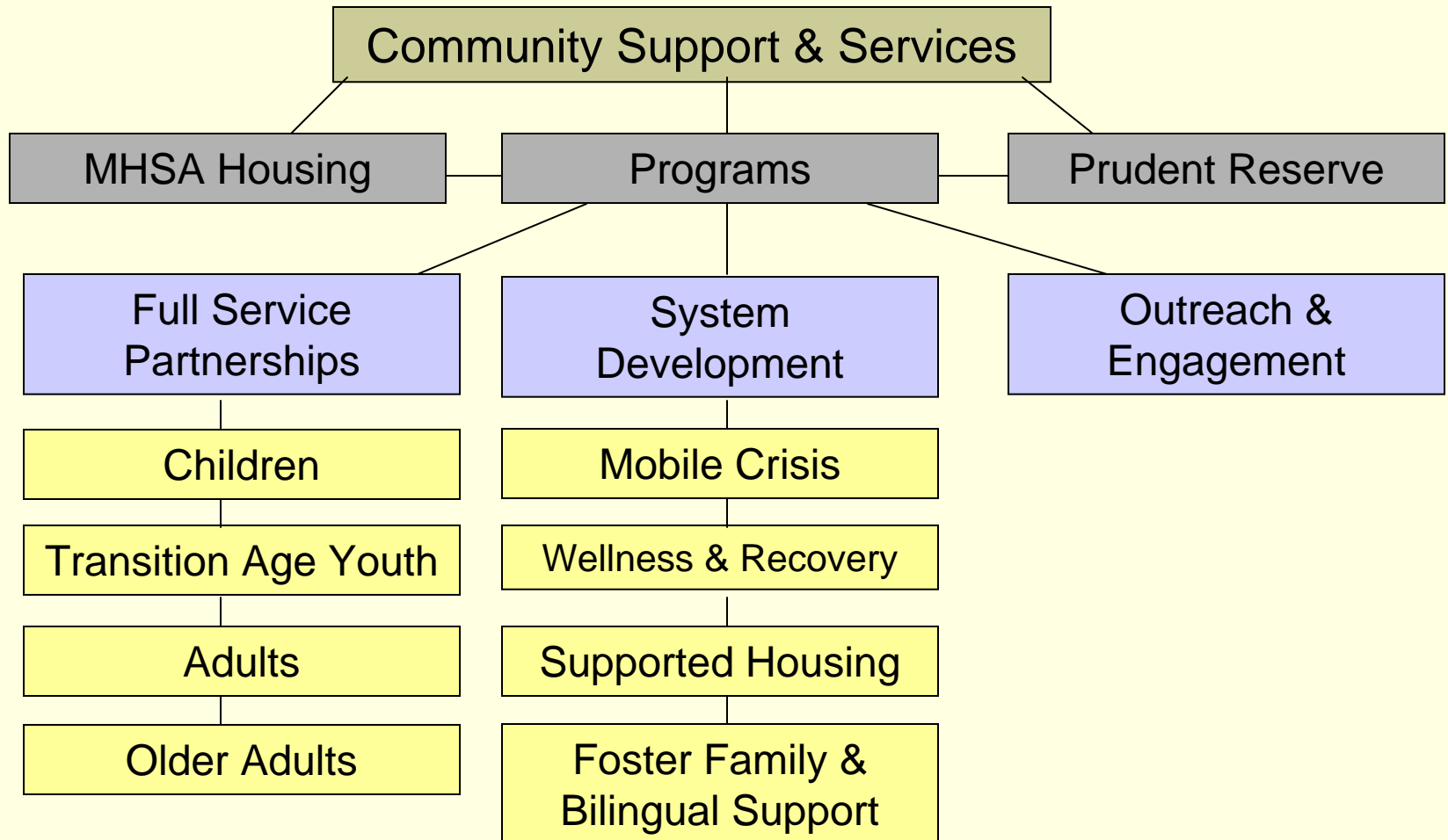


# What is a Full Service Partnership?

---

- Target: more than 50% of MHSA CSS should be dedicated to a Full Service Partnership (FSP)
- FSP is an array of services for target populations based on needs identified in an Individual Supports and Services Plan (see handout)
- The shift: FSPs may provide services to clients at various levels of need
- FSPs may expand existing services or create new programs.

# MHSA Community Support & Services and Project Plans



*Developed in 2004 and Approved in 2005 by DMH*