

Mental Health Services Act Steering Committee

MHSA Background and Overview

Jayleen Richards, MHSA Coordinator

June 30, 2009



What is the Mental Health Services Act (MHSA)?

- MHSA was enacted when voters approved Proposition 63 in 2004.
- Imposes a 1 percent income tax on personal income in excess of one million dollars. The funding is distributed to counties upon approval of MHSA Plans and subsequently on an annual basis
- MHSA provides funds, personnel and other resources to expand local mental health services
- Services focus on wellness and recovery as well as prevention, early intervention for target populations, including children, transition age youth, adults, older adults and families.

The Driving Principles for MHSA

- Community collaboration
- Cultural competence
- Client driven mental health system
- Family driven mental health system
- Wellness, recovery and resilience focus
- Integrated service experience.

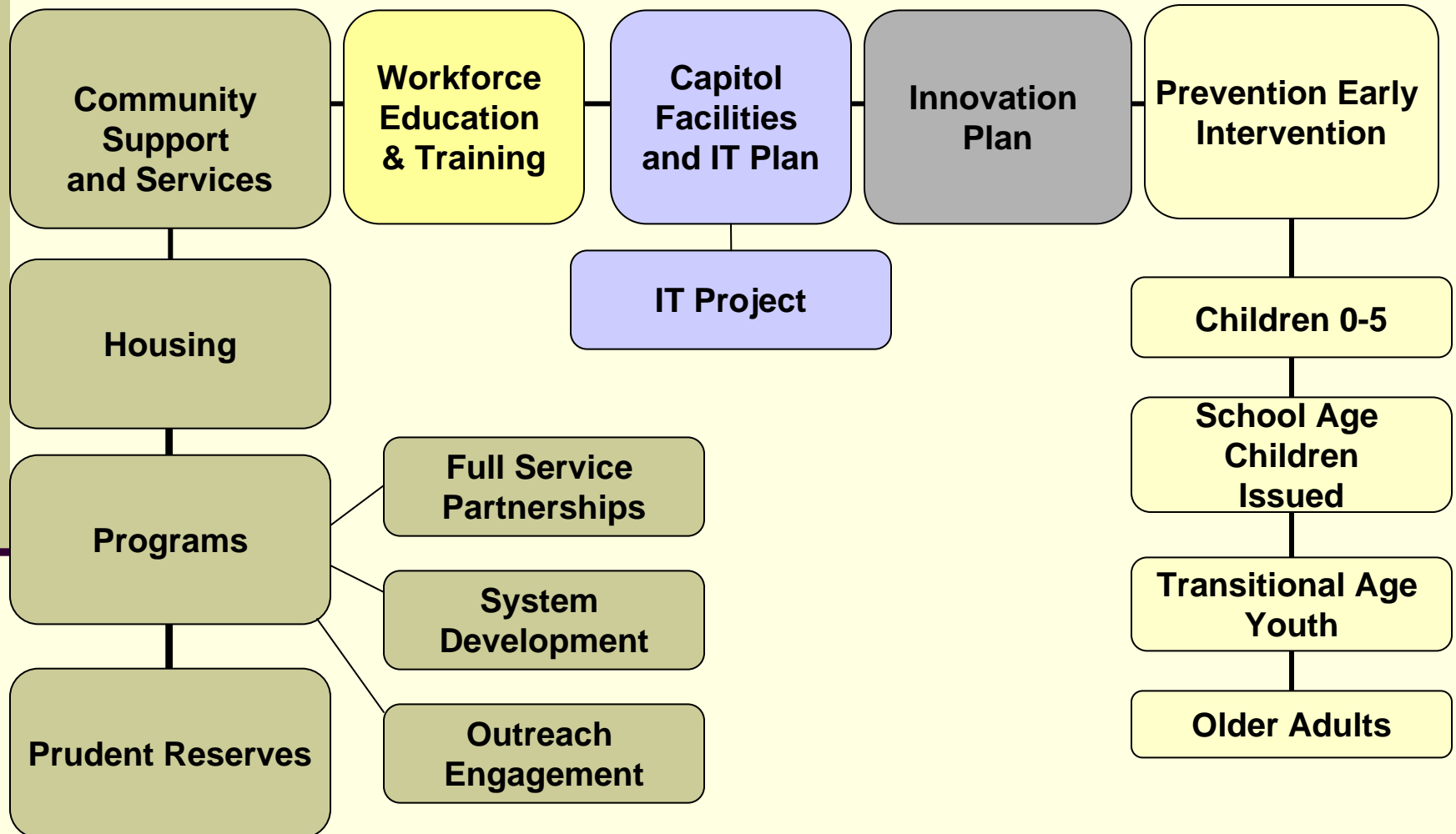
The Driving Principles for MHSA

- Outreach to unserved and underserved populations
 - Racial and ethnic groups
 - Geographic areas
 - A range of age groups
- Utilize best practices and evidence based strategies to deliver mental health services
 - Prevention and early intervention
 - Reduce negative outcomes.

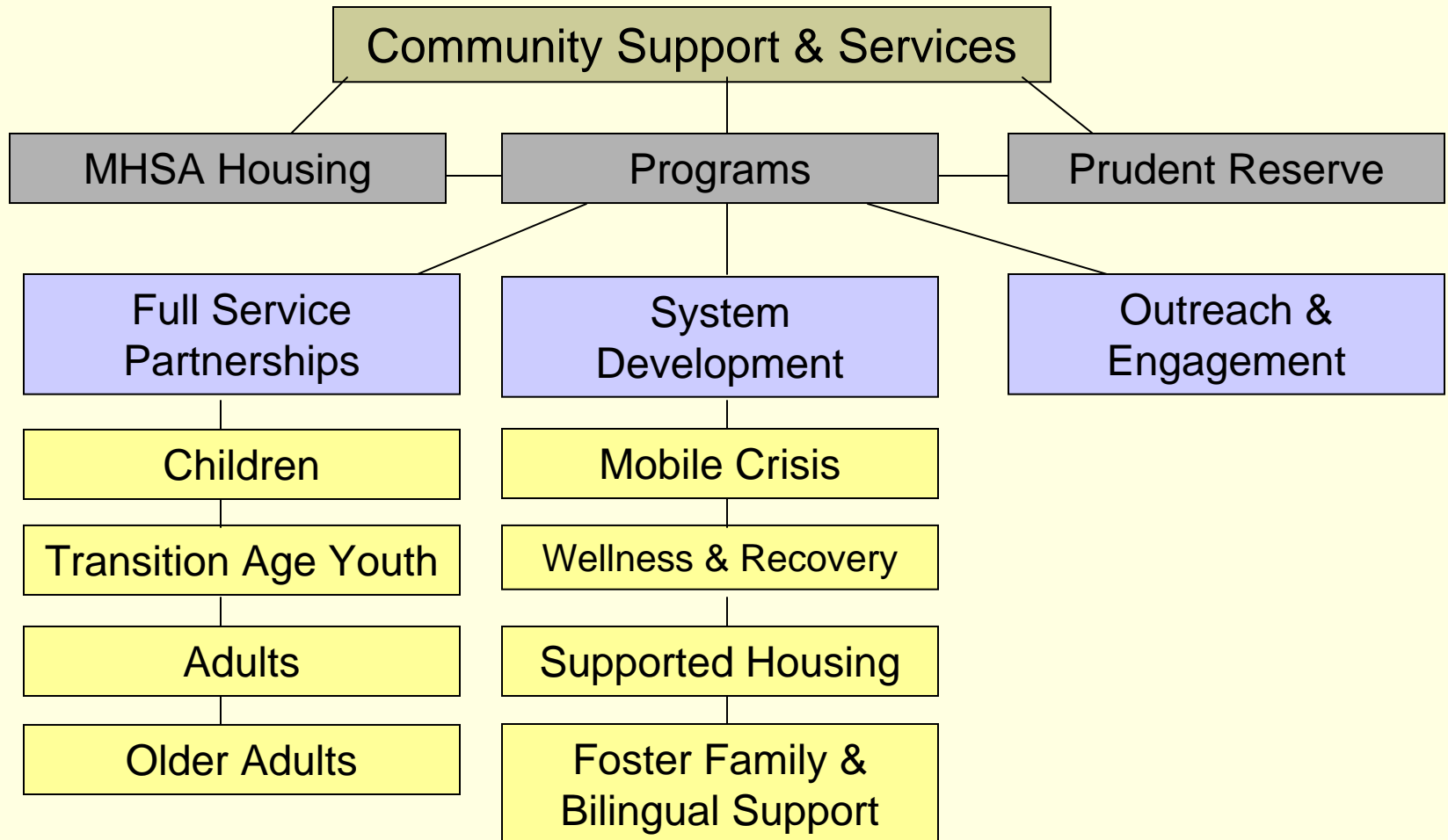
Status of Five MHSA Components

1. Community Support & Services: fully implemented
2. Prevention & Early Intervention: implementation phase
3. Capital Facilities and Technology: implementation phase
4. Workforce Education & Training: program planning, implementation phase
5. Innovation: community planning phase

Solano County MHSA Components & Project Plans



MHSA Community Support & Services and Project Plans



Developed in 2004 and Approved in 2005 by DMH

MHSA CSS Strategic Planning

- Solano County developed the first MHSA CSS Plan in 2004 and it was approved by DMH in 2005
- Revisit the MHSA CSS Plan, and include program, evaluation, and financial plans
- Given the financial outlook for MHSA and MH in future years, Solano should plan accordingly.

MHSA Community Planning

- MHSA Stakeholders: quarterly meeting of community stakeholders—provide updates and seek input.
- MHSA Steering Committee: provide recommendations to the MHSA Strategic Plan; and provide feedback on policy decisions.
- Local Mental Health Board: meets monthly—provide updates and seek input.

MHSA Community Planning

- National Alliance on Mental Illness (NAMI) and Consumer and Family Advisory Committee (CFAC): standing agenda item—provide updates and seek feedback.
- Community planning meetings: held throughout the year to develop plans, seek input and provide updates.
- Various community meetings, including Early Childhood Mental/Developmental Health Collaborative, Senior Coalition, Clinic Consortium, IFSI Collaborative, and etc.

Community Input Shapes MHSA

- Mobile Crisis Expansion
- Additional Consumer Staff
- Expansion of Outreach & Engagement
- Integration of Primary Care Services and Mental Health
- Prevention and Early Intervention Plan recognized as a plan that was driven by the community.

MHSA Public Comment Period

- MHSA Plans are posted for 30 day public comment period and notify public about public comment period.
- Public comments are incorporated into the final MHSA Plan.
- The final MHSA Plan is presented to the Solano Local Mental Health Board after the 30 day public comment period
- Submit final MHSA Plan to California Department of Mental Health for review and approval.

Conclusion

■ Questions?

How to Contact Solano MHSA

Jayleen Richards, MHSA Coordinator

275 Beck Ave., MS 5-250

Fairfield, CA 94533

707-784-8320

jmrichards@solanocounty.com

(same address and phone number for staff listed below)

Megan Richards, PEI Project Manager

merichards@solanocounty.com

Robert Sullens, MHSA Project Manager

rsullens@solanocounty.com

Sanjida Mazid, Project Manager

smazid@solanocounty.com

Joseph Robinson, MH Services Coordinator

fjrobinson@solanocounty.com