

May 25, 2010



Nut Tree Airport

Master Plan *Board of Supervisors Project Update*

Planning Process

- ⇒ Inventories
- ⇒ Forecast of Aviation Activity
- ⇒ Capacity & Facility Requirements Determination
- ⇒ Alternatives and Plan Development
 - Airfield
 - Landside
- ⇒ Implementation Plan
- ⇒ Financial Implementation Plan



AIRPORT

Solano County

Meeting/ Presentations

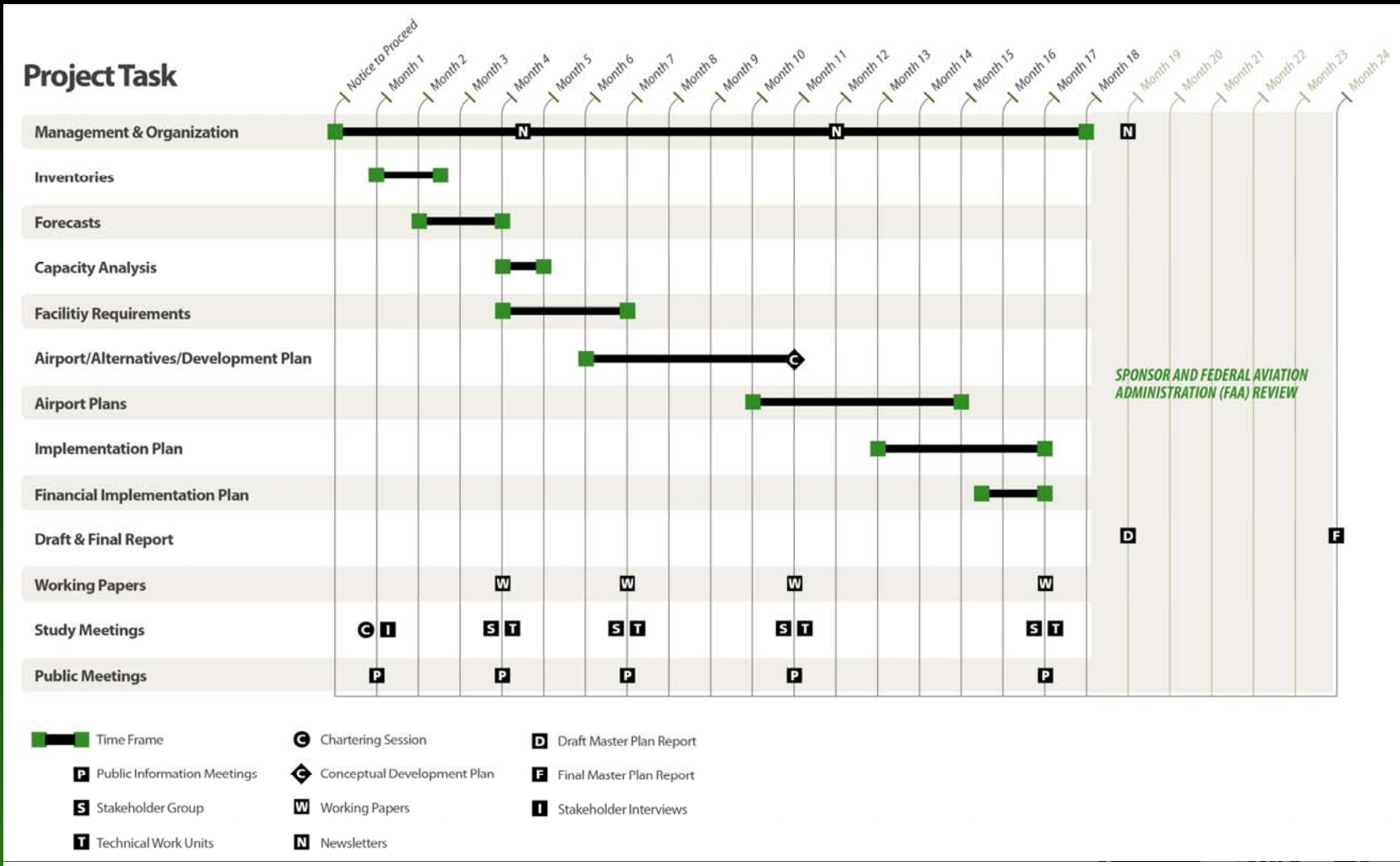
- ⇒ Chartering Session
- ⇒ Stakeholder Interviews
- ⇒ Working Group Meetings (4)
- ⇒ Public Information Meetings (4)
- ⇒ Officials Briefing/Presentation of Recommendations
- ⇒ Progress Meetings



AIRPORT

Solano County

Project Schedule



Roles & Responsibilities

⇒ Consultants

- Technical Analysis
- Process Driver
- Project Guidance

⇒ Federal Aviation Administration (FAA)

- Approval of Forecasts
- Approval of Airport Layout Plan (ALP) Drawing Set

⇒ Sponsor (Solano County)

- Policy Direction
- Approval of Concepts & Final Products



AIRPORT

Solano County

Setting the Tone for Community Dialogue

- ⇒ Provide Opportunities for Objective and Inclusive Input from the Public & Stakeholders of All Opinions
- ⇒ Make the Planning Process Open & Transparent
- ⇒ Provide Clear, Concise & Accurate Information
- ⇒ Understand Local Issues
- ⇒ Manage Community Expectations Regarding Scope of Study & Possible Results



AIRPORT

Solano County

Working Paper One (WP1)

- ⇒ Chapter A.
Introduction & Vision
- ⇒ Chapter B.
Inventory of Existing Conditions
- ⇒ Chapter C.
Aviation Activity Forecasts



AIRPORT

Solano County

Summary of Aviation Activity Forecasts, 2009-2030

Operations	2009	2015	2020	2025	2030
Single Engine Piston	89,600	92,985	95,569	98,157	100,743
Multi-Engine Piston	4,800	5,122	5,406	5,706	6,023
Turbo-Prop	2,420	3,660	5,006	6,490	8,124
Business Jet	3,420	4,884	6,297	7,853	9,562
Helicopter	1,250	1,624	2,000	2,413	2,865
GA Operations	101,490	108,275	114,279	120,619	127,316
Military Operations	10	11	11	12	13
TOTAL OPERATIONS	101,500	108,286	114,290	120,631	127,329
Local Operations	40,000	41,149	42,287	43,427	44,565
Itinerant Operations	61,500	67,137	72,003	77,204	82,764
Based Aircraft by Type					
Single Engine Piston & Turbo-prop	179	205	212	219	227
Multi-Engine Piston & Turbo-prop	14	16	17	18	19
Jet	5	7	9	10	12
Helicopter	3	5	6	8	9
TOTAL BASED AIRCRAFT	201	233	244	255	267



AIRPORT

Solano County

May 25, 2010

**NUT
TREE**



AIRPORT

Solano County

Nut Tree Airport

Thank You!