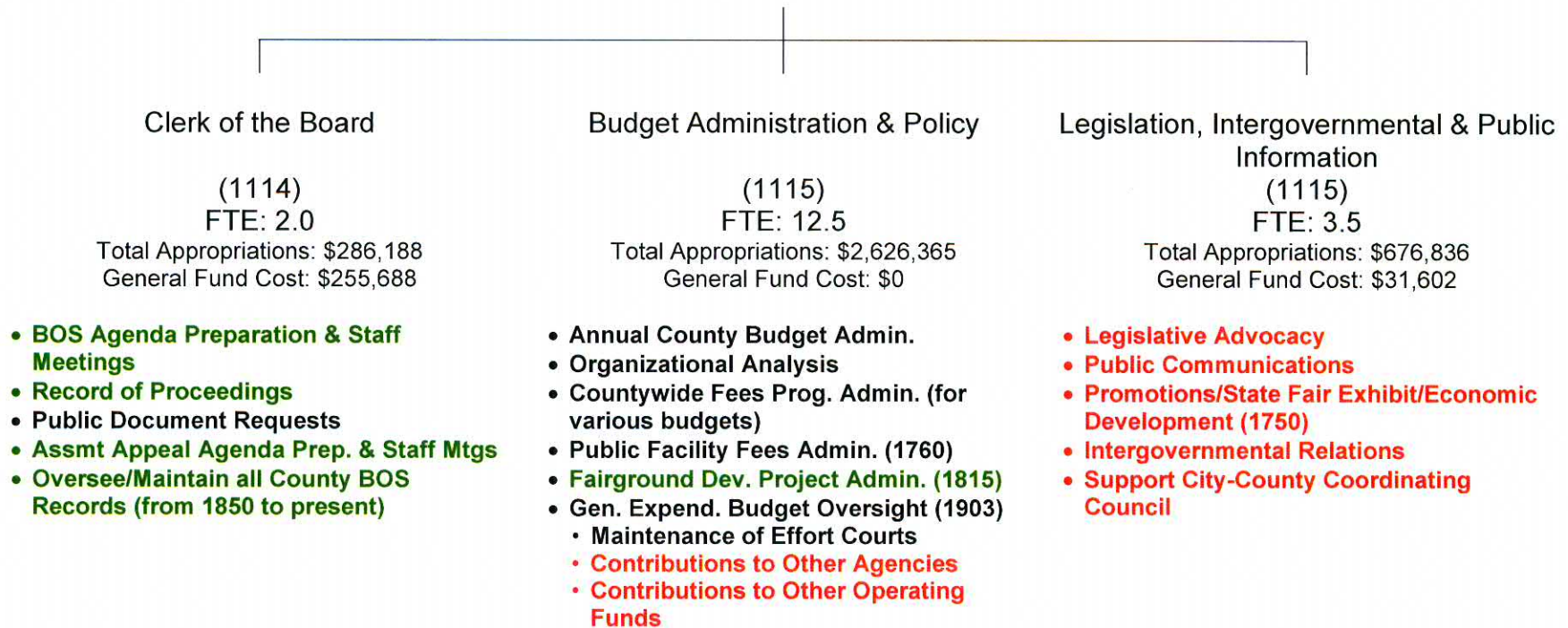


Solano County Administrator's Office
FTE: 18.0 /Approp: \$3,589,389 /GF Cost: \$287,290



**County Administrator's Office
COUNTY PROGRAMS
Mandated vs. Discretionary**

SERVICE LEVELS	Mandated	<u>Mandated / Mandated (MM)</u> Annual County Budget Administration Organizational Analysis General Expenditure Budget Oversight Countywide Fees Program Administration Public Facility Fees Program Admin. Public Document Requests	<u>Discretionary / Mandated (DM)</u>
	Discretionary	<u>Mandated / Discretionary (MD)</u> BOS Agenda Preparation & Staff Meetings Record of Proceedings Assmt Appeal Agenda Prep. & Staff Mtgs Oversee/Maintain all County BOS Records (from 1850 to present) Fairground Dev. Project Admin.	<u>Discretionary / Discretionary (DD)</u> Legislative Advocacy Public Communications Promotions /State Fair / Economic Dev. Intergovernmental Relations Support City-County Coordinating Council
		Mandated	Discretionary
		PROGRAMS	

**List of Mandated Programs
FY2010/11
County Administrator's Office**

Program Name	Budget Units	Program Description	Federal, State, or Local Regulation	Level of Service Mandated? (Yes/No)	Program Category (MM, DM, MD, DD)	FY2010/11 Final Budget	General Fund Cost	# of FTEs	Impact (e.g., What will happen if County does not provide the service?)
Clerk of the Board	1114	Scheduling, preparation, posting, distribution of Board agendas within legal timelines, minutes and record and maintain county proceedings and records.	State	Y	MD	286,188	255,688	2.00	
Legislation, Intergovernmental & Public Information	1115, 1750	Facilitate beneficial federal and state legislation from a programmatic and revenue protection/enhancement. Promotion of economic activity to improve quality of life and to sustain a tax base for county revenues.	Local	N	DD	676,836	31,602	3.50	
Budget Administration & Policy	1115	Develop proposed and future budgets.	State	Y	MM	2,626,365		12.50	
GRAND TOTAL						3,589,389	287,290	18.00	

SOLANO COUNTY GRAND JURY
FTE: 0 / Approp: \$134,584 / GF Cost: \$134,584

Civil Investigation and Inquiries

FTE: 0

Total Appropriations: \$134,584

General Fund Cost: \$134,584

- **Examine all aspects of county and city government and special districts to ensure the best interests of the citizens are served.**
- **Investigate citizen complaints about public agencies and officials.**
- **Investigate criminal issues when requested to do so by the District Attorney.**

**Grand Jury
COUNTY PROGRAMS
Mandated vs. Discretionary**

SERVICE LEVELS	Mandated	<u>Mandated / Mandated (MM)</u>	<u>Discretionary / Mandated (DM)</u>
	Discretionary	<u>Mandated / Discretionary (MD)</u> <ul style="list-style-type: none"> • Examine all aspects of county and city government and special districts to ensure the best interests of the citizens are served. • Investigate citizen complaints about public agencies and officials. • Investigate criminal issues when requested to do so by the District Attorney. 	<u>Discretionary / Discretionary (DD)</u>
		Mandated	Discretionary
PROGRAMS			

**FY2010/11 Program List
Grand Jury**

Program Name	Budget Units	Program Description	Federal, State, or Local Regulation	Level of Service Mandated? (Yes/No)	Program Category (MM, DM, MD, DD)	FY2010/11 Final Budget	General Fund Cost	# of FTEs	Impact (e.g., What will happen if County does not provide the service?)
Grand Jury	2400	Conducts investigations and inquiries on all aspects of county and city government and special districts. Reviews and evaluates procedures, methods, and systems used by the county government.	Pursuant to P. C. §925-933.6	Y/N	MM/DM/MD/DD	134,584	134,584	0.00	Further reductions in funding will result in fewer non-mandated investigations and inquiries, including but not limited the financial conditions of the county, redevelopment agencies, housing authorities and/or special districts. Will also place additional limits on how the annual report is disseminated to the public.
GRAND TOTAL						134,584	134,584	0.00	