

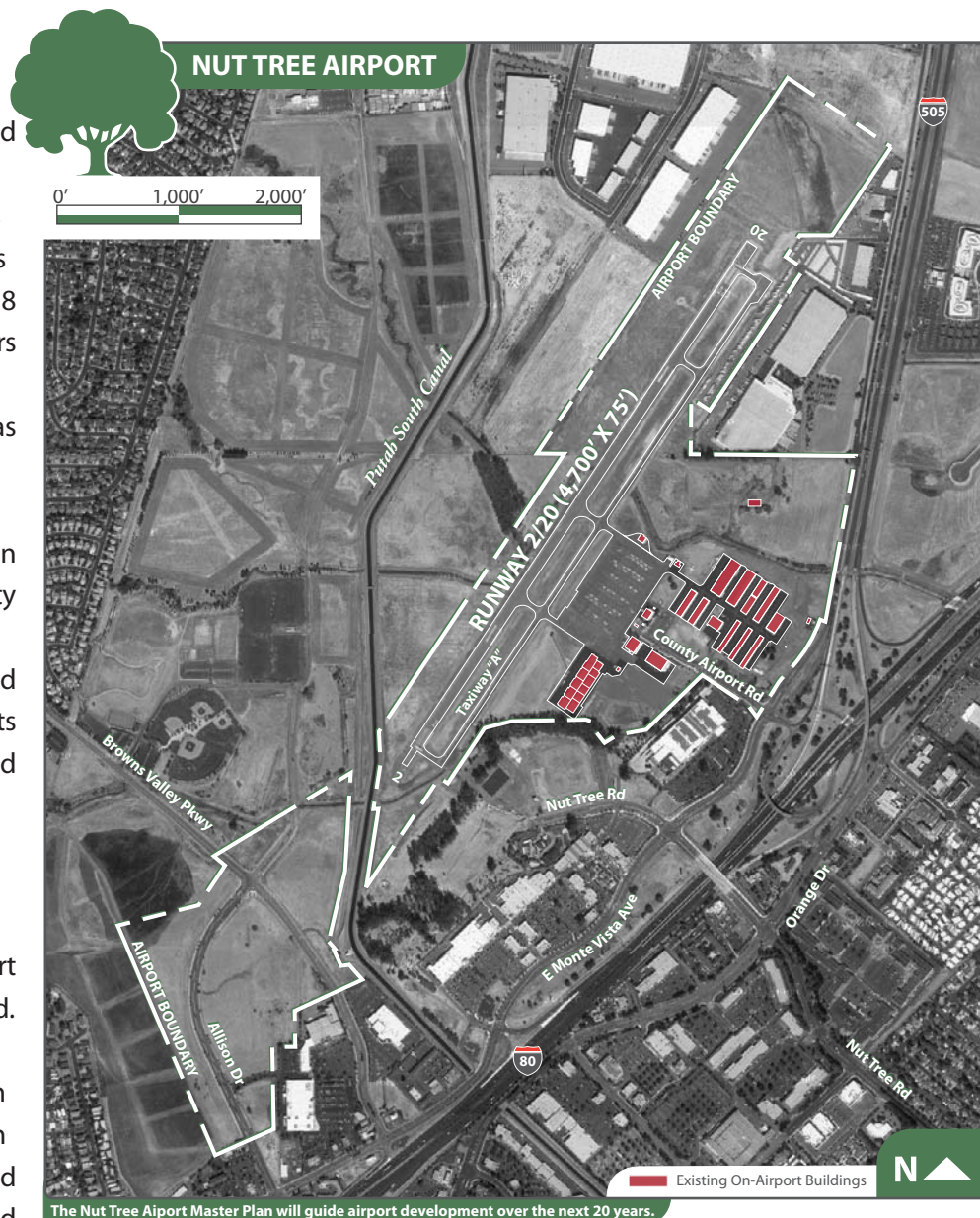
WHERE WE ARE IN THE PROCESS

An introductory public meeting was held in Vacaville in January 2010, in tandem with a kickoff session of a Stakeholders Input Group. The Master Plan process is expected to be completed in the next 18 months, generating four working papers in advance of the Draft Final report. Working papers will cover issues such as an inventory of the airport's current facilities, forecasts of future aviation activity, and future aviation demands on the Airport. During this term, community meetings will be held each time a Stakeholders Input Group meeting is held to ensure that the emerging plan reflects the interests of all concerned parties and to keep the public up-to-date on the plan's progress.

In May 2010, the first of four working papers, scheduled to be generated as part of the Master Plan project, was released. Working Paper One incorporated the concerns and wishes gathered through focus group interviews conducted with stakeholder groups in February 2010 and included various expressed visions related to the Airport's future. The Working Paper also included an inventory of existing conditions and forecasts of aviation activity. The Airport will remain a general aviation airport with a focus on small and medium size business-use aircraft. It is expected that, overall, the number of aircraft operations and the number of based aircraft will increase modestly over the 20-year planning period; however, the use of larger general aviation aircraft is expected to increase more rapidly than the use of smaller aircraft. Working Paper One is available on the project website: www.solanocounty.com/airportmasterplan.

NEXT STEPS

The next set of public and Stakeholder Input Group meetings is expected to be held during the first part of August 2010. The focus of the discussion at these meetings will be Working Paper Two and will include such topics as airport facility needs that will be required to accommodate forecast demand and the beginning of the discussion on physical development options for the Airport.



AIRPORT FACTS

- ❖ Approximately 200 Aircraft are based at the airport.
- ❖ The single runway supports about 100,000 take-offs and landings annually.
- ❖ The Nut Tree Airport is comprised of approximately 262 acres and has operated since 1955 when it was opened with a dirt landing strip.
- ❖ Today the airport has an asphalt paved runway that is 4,700' long and 75' wide.



NUT TREE AIRPORT



Looking Toward Our Future.

Nut Tree Airport Airport Master Planning Program

INTRODUCTION

In 1955, Vacaville resident Ed Power roughed out a dirt landing strip behind his family's Nut Tree Restaurant, which had evolved from a fruit stand into a major tourist attraction and a favorite stopover of travelers along the I-80 corridor connecting Sacramento and Reno to the Bay Area. The small-gauge railway that had opened on the property three years earlier was soon hustling visiting pilots back and forth from the landing strip to the Nut Tree's landscaped complex of toy shops, fruit shops, and restaurants. In 1957, the Solano Irrigation District purchased a portion of the Nut Tree property for a canal, and the revenue from that purchase funded a paved and realigned runway. **A local institution was aloft.**

Contents

- 1} INTRODUCTION.
CONTACT INFORMATION.
- 2} MASTER PLANNING
PROGRAM PURPOSE.
- 3} MASTER PLAN UPDATE STEPS.
STAKEHOLDER INPUT GROUP.
OPPORTUNITIES FOR PUBLIC
PARTICIPATION.
WEBSITE.
- 4} WHERE WE ARE IN THE
PROCESS.
NEXT STEPS.

CONTACT INFORMATION

For specific information about this project, or to submit comments or ask questions, please contact:

Mr. Andy Swanson
Airport Manager
Nut Tree Airport
Solano County, General Services Dept.
301 County Airport Road, Suite 205
Vacaville, California 95688
Phone (707) 469-4600
AJSwanson@SolanoCounty.com

“... a long-term development plan for the airport that addresses the existing and future needs of airport users and maximizes compatibility with the surrounding area.”

The established airport was donated to Solano County in 1970 and became a public facility. While the Nut Tree Restaurant discontinued operations from 1996 to 2006, operations of its namesake, the Nut Tree Airport, have been continuous. It is still a one-runway, general aviation airport, augmented by a taxiway and an array of support facilities, including aircraft charter businesses, a flight training school, and facilities for aircraft maintenance, storage, and fueling. Still under the ownership of Solano County, and operated as a division of the County's General Services Department, it draws praise from visiting pilots for its superb weather conditions, relative lack of fog, and its convenience to surrounding cities.

Funded with a grant from the Federal Aviation Administration (FAA), late last year, Solano County and its consultant, Tulsa-based Barnard Dunkelberg & Company, began work on a Master Planning Program to guide the Airport's development over the next 20 years.

MASTER PLANNING PROGRAM PURPOSE

The Nut Tree Airport Master Planning Program will provide a long-term development plan for the Airport that addresses the existing and future needs of airport users and maximizes compatibility with the surrounding area. The development plan will include recommendations for airport facilities development, on-airport land use, surrounding area and supporting infrastructure development, as well as financial plans to fund future improvements. The final master planning program recommendations will be approved by the Solano County Board of Supervisors and the Federal Aviation Administration (FAA). The master planning program is expected to take about 18 months. A graphic illustration of the project schedule is provided below that shows key milestones and Stakeholder Input Group/public meeting dates, as well as steps in the planning process.

The focus of the Master Plan Update is on the physical development of airport property to meet aviation demands, with consideration given to environmental issues, as well as community needs and desires. The Master Plan Update will provide a comprehensive planning tool that will be used by the County and FAA to evaluate the airport's capabilities and role, forecast future aviation demands, and define plans for the timely development of new or improved facilities. The plan for development at the Airport will be:

- ❖ **Organized in accordance with existing and future airport operations and aviation demand;**
- ❖ **Compatible with the environment, the land uses near the Airport, other transportation modes, and other airports in the region;**
- ❖ **Based on the needs and goals of the Solano County Board of Supervisors and the Public; and,**
- ❖ **Within regulatory guidelines and legal parameters.**

MASTER PLAN UPDATE STEPS

The Master Plan Update is scheduled to be completed in the winter of 2011. Following comprehensive analysis of facility needs, a recommended airport development plan will be prepared. This plan will take into consideration existing and projected conditions, as well as input from the Stakeholder Input Group, Airport and County Staff, County Board of Supervisors, the FAA, and the public. The plan and program for Nut Tree Airport will include:

- ❖ **An analysis and inventory of existing conditions and plans;**
- ❖ **Development of forecasts of future aviation activity;**
- ❖ **Determination of appropriate airside and landside facilities;**
- ❖ **Develop a plan for airport development and environmental protection;**
- ❖ **Development of costs and schedules for improvements; and,**
- ❖ **Development of a financial program to fund improvement.**

These working papers will be made available to Stakeholder Input Group members and the public prior to each meeting. Working papers will be revised as needed and will ultimately be incorporated into a single document that will become the final version of the Master Plan Update.

The Master Plan's Stakeholders Input Group is not an advisory body in any formal sense, yet its input is considered essential by the Master Plan's architects, who seek to provide a forum where all interested parties can air their opinions. By this means, the planners hope to arrive at a plan that considers and balances the viewpoints of all involved parties.

OPPORTUNITIES FOR PUBLIC PARTICIPATION

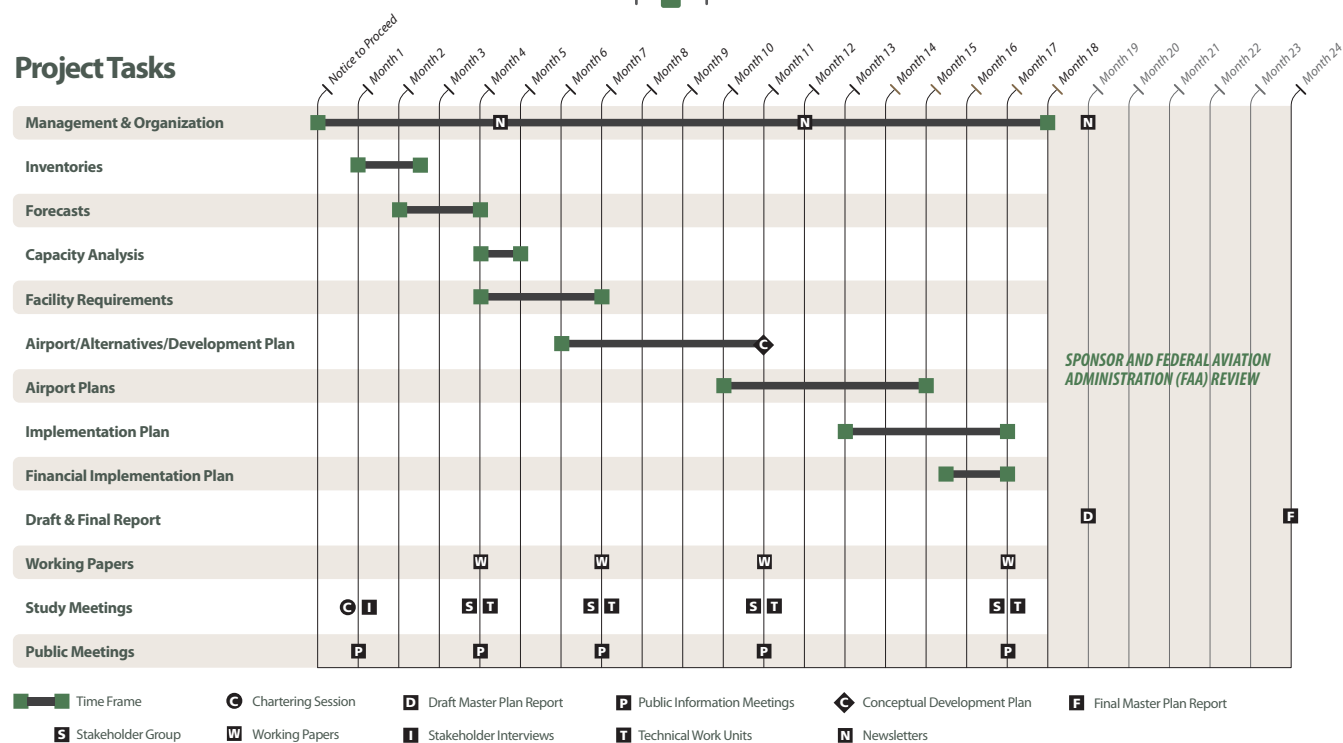
To ensure the long-term airport development plan reflects the interests and concerns of local residents and businesses, the County is actively seeking public involvement and participation in the Nut Tree Airport Master Planning Process. Five public meetings are planned during the study to provide opportunities for interested community members to provide input. These meetings will provide the public an opportunity to ask questions, learn more about the master planning program, and provide input.

At the meetings, comment forms will be provided and public input gathered.

WEBSITE

Reports, maps, working papers, Stakeholder Input Groups and public meeting presentations and notes, public meeting dates, and other information will be regularly posted and updated on the Nut Tree Airport website. Check the website for up-to-date information as the study progresses at:

www.solanocounty.com/airportmasterplan



STAKEHOLDER INPUT GROUP

A Stakeholder Input Group (comprised of representatives from local governments, Solano County agencies, airport tenants, local businesses and area residents) has been formed. The Stakeholder Input Group will meet regularly throughout the life of the project to review information, provide input and feedback, and discuss the various working papers prepared as part of the Master Plan Update. Although this group has been established, additional representatives from community groups are welcome to attend meetings and participate in discussions.

Summarized data, information, and maps associated with specific study topics will be presented in the form of working papers.